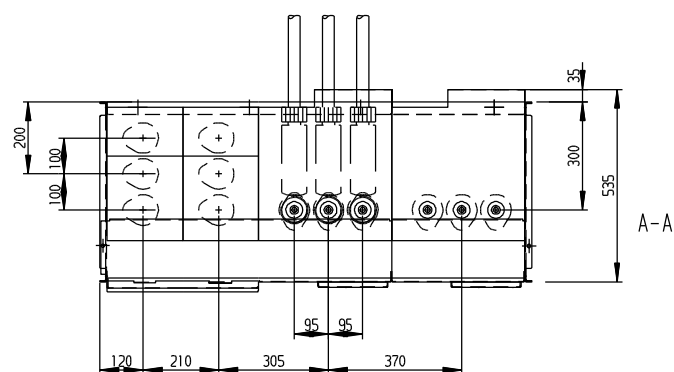
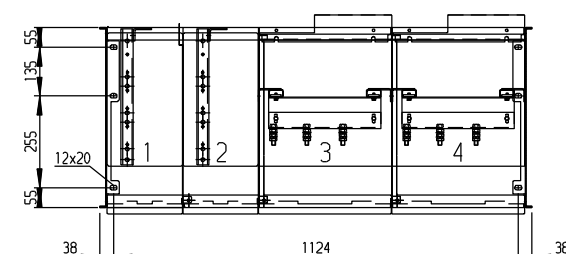


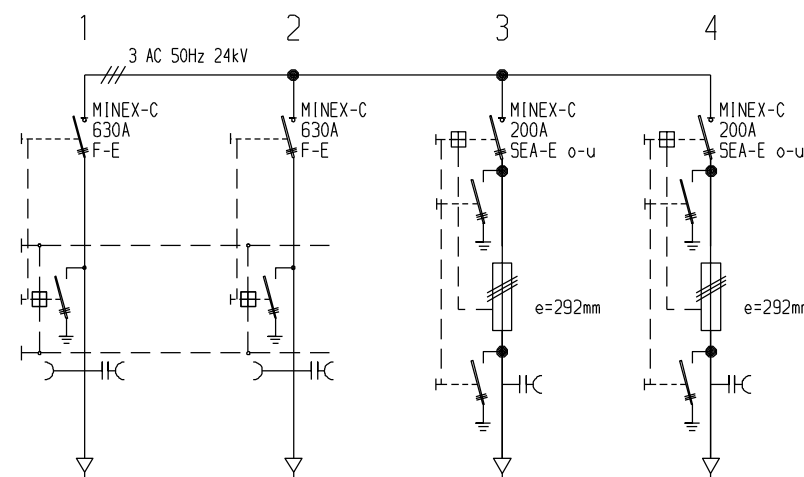
MINEX-C 24kV/630A



A-A



B-B



DRIESCHER MINEX-C KKTT  
ITEM NUMBER: 413954

NOTES:

- ALL MINEX-C RMUs ARE FITTED WITH THE ANTI-BURST SYSTEM INSTALLED IN THE RMU TANK AS WELL AS THE CABLE COMPARTMENTS.
- ALL RMUs SHALL BE RATED AT 24KV, REFER TO STANDARDS BULLETIN S01-061.
- SWITCH ISOLATORS (K CUBICLES) ARE RATED AT 630A.
- FUSED SWITCHES (T CUBICLES) ARE RATED AT 200A.
- RMU FAULT RATING IS 25KA.1SEC.
- ALL BUSHINGS SHALL BE 630A IN ACCORDANCE WITH DIN 47636.
- ALL CABLE DESTINATION AND SWITCH NUMBER TAGS SHALL BE ATTACHED TO THE RMU AT THE SPECIFIED LOCATIONS WITH FACTORY PROVIDED SCREWS.
- HORTSMANN COMPASS B FAULT INDICATORS SHALL BE FITTED TO SWITCH CUBICLE 1 ON EVERY MINEX-C RMU. COMPASS B FAULT INDICATORS SHALL BE FITTED WITH 3 PHASE CT'S. IF A SUMMATION CT IS FITTED REPLACE IT WITH ITEM NUMBER 501788 AND RECONFIGURE THE FAULT INDICATOR.
- ALL CUBICLES SHALL BE FITTED WITH HORTSMANN WEGA 1.2C VOLTAGE INDICATORS.
- ALL FUSES USED IN MINEX-C RMUs SHALL BE 292MM LONG DIN 43625 STANDARD. REFER TO S02-01-04-03 FOR FURTHER DETAILS.
- ALL CABLE TERMINATIONS SHALL BE STRAIGHT SCREENED DEAD-BREAK TERMINATIONS, REFER TO TABLE B FOR ITEM NUMBERS.
- PHASE SEQUENCE IN K CUBICLES SHALL BE RED - WHITE - BLUE FROM THE FRONT TO BACK OF THE RMU.
- PHASE SEQUENCE IN T CUBICLES SHALL BE RED - WHITE - BLUE FROM LEFT TO RIGHT AS THE OPERATOR LOOKS AT THE RMU.

TABLE B

| XLPE CABLE TERMINATION BOOTS, 11kV |             |
|------------------------------------|-------------|
| CABLE SIZE sq mm                   | ITEM NUMBER |
| 95 ALUMINIUM                       | 414778      |
| 240 ALUMINIUM                      | 414779      |
| 300 COPPER                         | 414780      |
| 400 ALUMINIUM                      | 501664      |
| XLPE CABLE TERMINATION BOOTS, 22kV |             |
| CABLE SIZE sq mm                   | ITEM NUMBER |
| 120 COPPER                         | 414781      |
| 240 ALUMINIUM                      | 414783      |
| 240 COPPER                         | 414782      |

| ITEM No | DESCRIPTION  |
|---------|--|
| 1       | HORTSMANN WEGA 1.2C VOLTAGE PRESENCE INDICATOR     |
| 2       | CABLE DESTINATION TAG                              |
| 3       | SWITCH ISOLATOR OPERATING MECHANISM                |
| 4       | EARTH SWITCH OPERATING MECHANISM                   |
| 5       | SWITCH NUMBER TAG                                  |
| 6       | ABS OPERATION INDICATOR                            |
| 7       | HORTSMANN COMPASS B FAULT INDICATOR                |
| 8       | RMU DATA NAME PLATE                                |
| 9       | INSULATION SPARK TEST POINT                        |
| 10      | INSULATION GAS PRESSURE INDICATOR                  |
| 11      | FUSE SWITCH OPERATION MECHANISM                    |
| 12      | FUSE EARTHING SWITCH OPERATION MECHANISM           |
| 13      | FUSE INDICATOR MIMIC                               |
| 14      | SCREW-IN TYPE PALM CONNECTOR (SET OF 3) (*504912). |

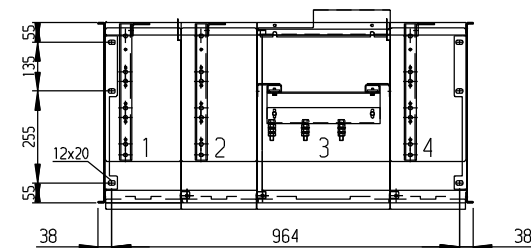
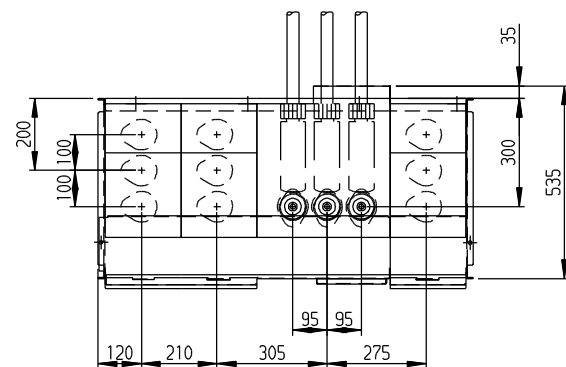
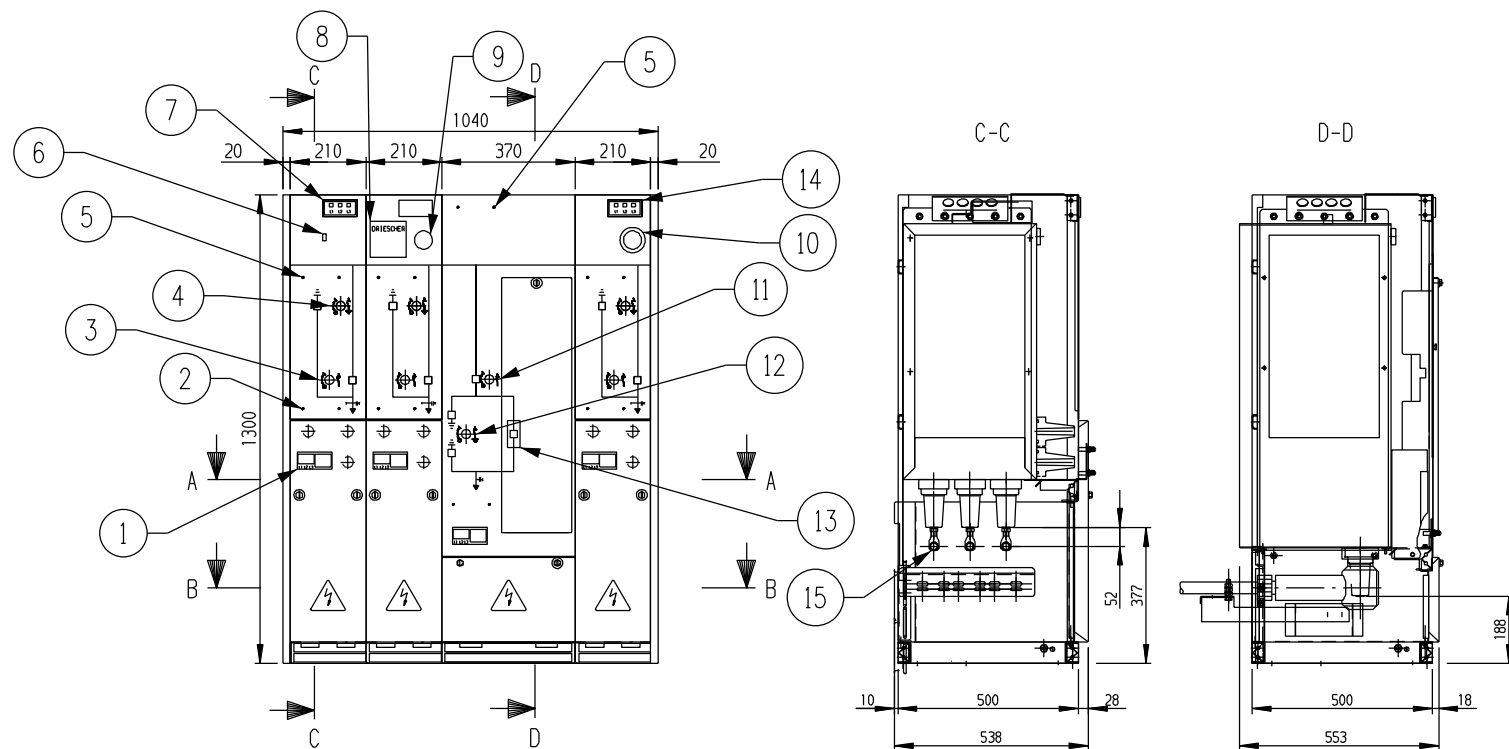
| 3          | ITEM 14 ADDED.AMENDED NOTES 1, 2, 3, 4, 8, 10, 11, 13 & 14. | P.BH. | OCT'22 | B.C. | B.V. |
|------------|---|-------|--------|------|------|
| 2          | TITLEBLOCK & DRAWING NUMBER FORMATTED                       | K.T.  | FEB'19 | C.C. | C.C. |
| 1          | NOTE 8 AMENDED, NOTE 9 REMOVED                              | A.T.  | JAN'14 | A.T. | B.C. |
| 0          | ISSUED FOR CONSTRUCTION                                     | C.M.  | NOV'12 | A.T. | B.C. |
| NO         | DESCRIPTION   | DRN   | DATE   | CKD  | APPD |
| AMENDMENTS |   |       |        |      |      |

**PowerWater**  
NORTHERN TERRITORY

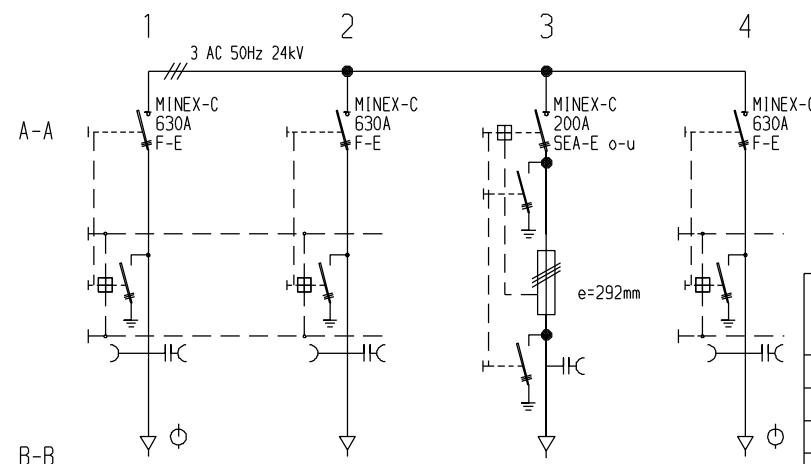
|                               |           |   |                   |                |   |
|-------------------------------|-----------|---|-------------------|----------------|---|
| DES                           | B.CHEUNG  | POWER STANDARD DRAWING  |                   |                |   |
| DRN                           | C.McLAREN | SWITCHGEAR<br>DRIESCHER MINEX-C RMU<br>SHEET 1 OF 3 TYPE KKTT |                   |                |   |
| CKD                           | A.TAYLOR  |   |                   |                |   |
| APPD                          | B.CHEUNG  |   |                   |                |   |
| SCALE                         | N.T.S.    |   |                   |                |   |
| ISSUED                        | NOV'12    | A3  | DRAWING<br>NUMBER | S02-01-04-22_1 |  |
| ALL DIM. IN mm                |           |   |                   |                |   |
| DRAFTING STANDARD TO A.S.1100 |           | CAD PRODUCT - DO NOT AMEND MANUALLY                           |                   |                | AMD   |

3

AMDT



MINEX-C 24kV/630A



DRIESCHER MINEX-C KKTK  
ITEM NUMBER: 500479

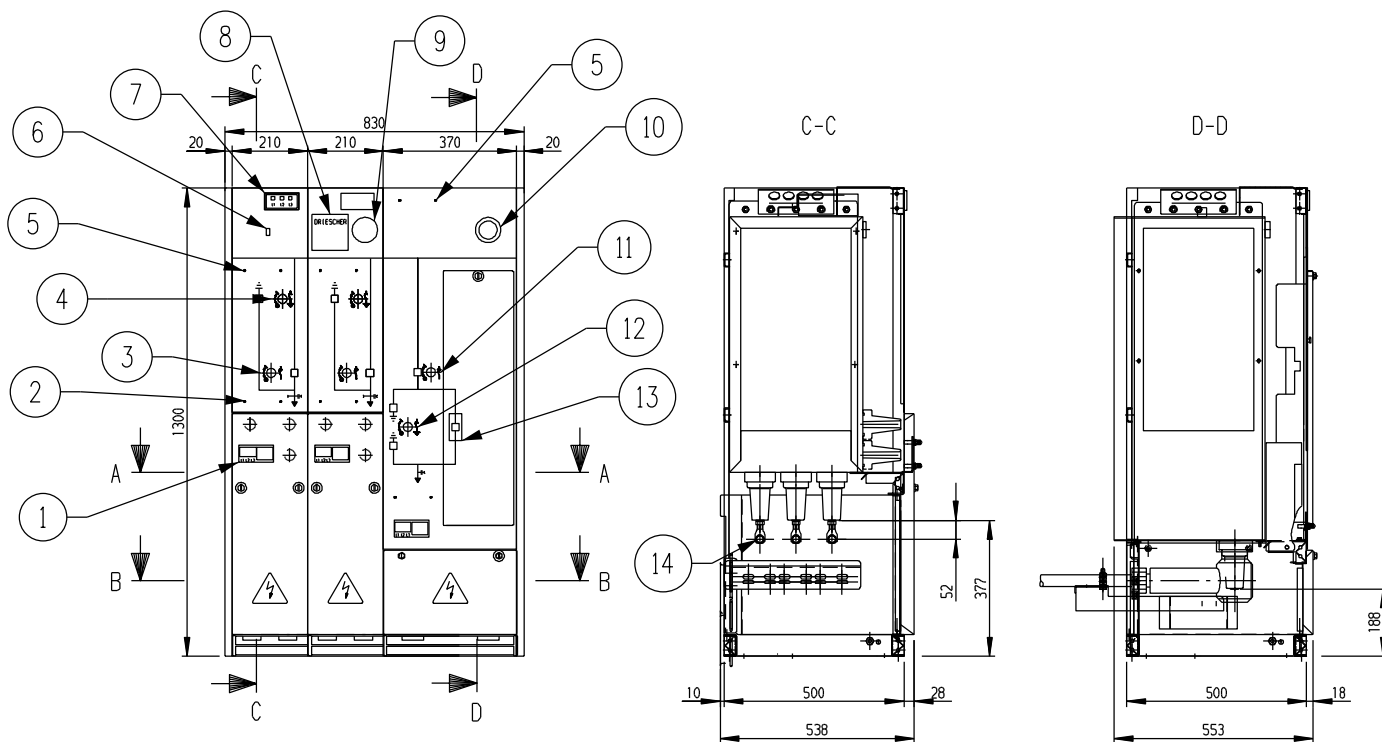
NOTES:

- ALL MINEX-C RMUs ARE FITTED WITH THE ANTI-BURST SYSTEM INSTALLED IN THE RMU TANK AS WELL AS THE CABLE COMPARTMENTS.
- ALL RMUs SHALL BE RATED AT 24KV, REFER TO STANDARDS BULLETIN S01-061.
- SWITCH ISOLATORS (K CUBICLES) ARE RATED AT 630A.
- FUSED SWITCHES (T CUBICLES) ARE RATED AT 200A.
- RMU FAULT RATING IS 25KA.1SEC.
- ALL BUSHINGS SHALL BE 630A IN ACCORDANCE WITH DIN 47636.
- ALL CABLE DESTINATION AND SWITCH NUMBER TAGS SHALL BE ATTACHED TO THE RMU AT THE SPECIFIED LOCATIONS WITH FACTORY PROVIDED SCREWS.
- HORTSMANN COMPASS B FAULT INDICATORS SHALL BE FITTED TO SWITCH CUBICLE 1 ON EVERY MINEX-C RMU. COMPASS B FAULT INDICATORS SHALL BE FITTED WITH 3 PHASE CT'S. IF A SUMMATION CT IS FITTED IT SHALL BE REPLACED WITH ITEM NUMBER 501788 AND RECONFIGURE THE FAULT INDICATOR.
- 4-WAY KKTK RMUs SHALL HAVE CUBICLE 4 FITTED WITH A HORTSMANN COMPASS A FAULT INDICATOR. COMPASS A FAULT INDICATORS SHALL BE FITTED WITH 3 PHASE CT'S. IF A SUMMATION CT IS FITTED REPLACE IT WITH ITEM NUMBER 501788 AND RECONFIGURE THE FAULT INDICATOR.
- ALL CUBICLES SHALL BE FITTED WITH HORTSMANN WEGA 1.2C VOLTAGE INDICATORS.
- ALL FUSES USED IN MINEX-C RMUs SHALL BE 292MM LONG DIN 43625 STANDARD. REFER TO S02-01-04-03 FOR FURTHER DETAILS.
- ALL CABLE TERMINATIONS SHALL BE STRAIGHT SCREENED DEAD-BREAK TERMINATIONS, REFER TO TABLE B FOR ITEM NUMBERS.
- PHASE SEQUENCE IN K CUBICLES SHALL BE RED - WHITE - BLUE FROM THE FRONT TO BACK OF THE RMU.
- PHASE SEQUENCE IN T CUBICLES SHALL BE RED - WHITE - BLUE FROM LEFT TO RIGHT AS THE OPERATOR LOOKS AT THE RMU.

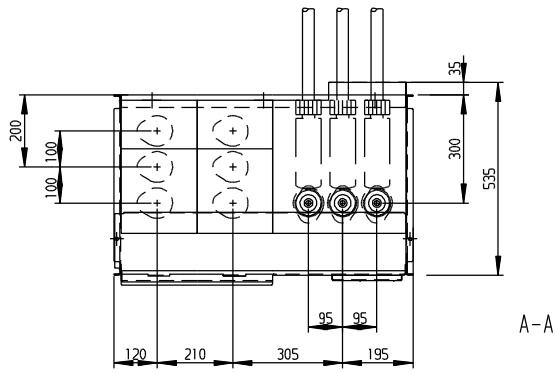
| TABLE B                            |             |
|------------------------------------|-------------|
| XLPE CABLE TERMINATION BOOTS, 11kV |             |
| CABLE SIZE sq mm                   | ITEM NUMBER |
| 95 ALUMINIUM                       | 414778      |
| 240 ALUMINIUM                      | 414779      |
| 300 COPPER                         | 414780      |
| 400 ALUMINIUM                      | 501664      |
| XLPE CABLE TERMINATION BOOTS, 22kV |             |
| CABLE SIZE sq mm                   | ITEM NUMBER |
| 120 COPPER                         | 414781      |
| 240 ALUMINIUM                      | 414783      |
| 240 COPPER                         | 414782      |

| ITEM No | DESCRIPTION  |
|---------|--|
| 1       | HORTSMANN WEGA 1.2C VOLTAGE PRESENCE INDICATOR     |
| 2       | CABLE DESTINATION TAG                              |
| 3       | SWITCH ISOLATOR OPERATING MECHANISM                |
| 4       | EARTH SWITCH OPERATING MECHANISM                   |
| 5       | SWITCH NUMBER TAG                                  |
| 6       | ABS OPERATION INDICATOR                            |
| 7       | HORTSMANN COMPASS B FAULT INDICATOR                |
| 8       | RMU DATA NAME PLATE                                |
| 9       | INSULATION SPARK TEST POINT                        |
| 10      | INSULATION GAS PRESSURE INDICATOR                  |
| 11      | FUSE SWITCH OPERATION MECHANISM                    |
| 12      | FUSE EARTHING SWITCH OPERATION MECHANISM           |
| 13      | FUSE INDICATOR MIMIC                               |
| 14      | HORTSMANN COMPASS A FAULT INDICATOR                |
| 15      | SCREW-IN TYPE PALM CONNECTOR (SET OF 3) (*504912). |

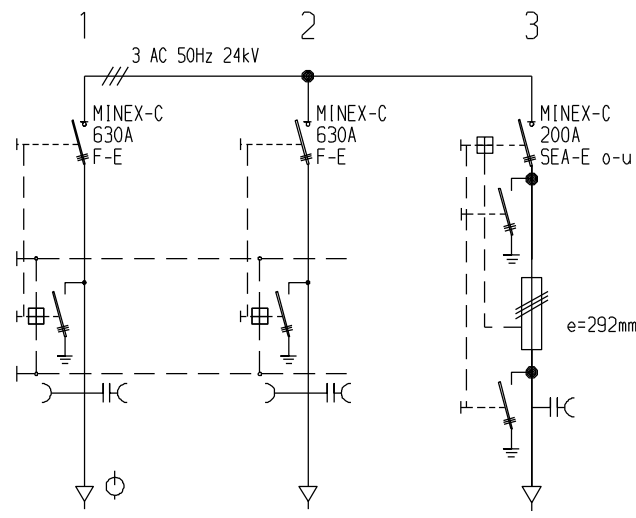
|            |  |       |        |      |      |   |                               |           |   |                   |                |                                    |
|------------|--|-------|--------|------|------|---|-------------------------------|-----------|---|-------------------|----------------|------------------------------------|
|            |  |       |        |      |      | <div><br/>NORTHERN TERRITORY</div> | DES                           | B.CHEUNG  | POWER STANDARD DRAWING  |                   |                |                                    |
|            |  |       |        |      |      |   | DRN                           | C.McLAREN | SWITCHGEAR<br>DRIESCHER MINEX-C RMU<br>SHEET 2 OF 3 TYPE KKTK |                   |                |                                    |
|            |  |       |        |      |      |   | CKD                           | A.TAYLOR  |   |                   |                |                                    |
|            |  |       |        |      |      |   | APPD                          | B.CHEUNG  |   |                   |                |                                    |
|            |  |       |        |      |      |   | SCALE                         | N.T.S.    |   |                   |                |                                    |
|            |  |       |        |      |      |   | ISSUED                        | NOV'12    | A3  | DRAWING<br>NUMBER | S02-01-04-22_2 | <div><div></div><div>3</div></div> |
|            |  |       |        |      |      |   | ALL DIM. IN mm                |           |   |                   |                |                                    |
|            |  |       |        |      |      |   | DRAFTING STANDARD TO A.S.1100 |           | CAD PRODUCT - DO NOT AMEND MANUALLY                           |                   | AMDT           |                                    |
| 3          | ITEM 15 ADDED.AMENDED NOTES 1, 2, 3, 4, 8, 9, 10, 11, 13 & 14. | P.BH. | OCT'22 | B.C. | B.V. |   |                               |           |   |                   |                |                                    |
| 2          | TITLEBLOCK & DRAWING NUMBER FORMATTED                          | K.T.  | FEB'19 | C.C. | C.C. |   |                               |           |   |                   |                |                                    |
| 1          | NOTE 8 AND 9 AMENDED   | A.T.  | JAN'14 | A.T. | B.C. |   |                               |           |   |                   |                |                                    |
| 0          | ISSUED FOR CONSTRUCTION  | C.M.  | NOV'12 | A.T. | B.C. |   |                               |           |   |                   |                |                                    |
| NO         | DESCRIPTION  | DRN   | DATE   | CKD  | APPD |   |                               |           |   |                   |                |                                    |
| AMENDMENTS |  |       |        |      |      |   |                               |           |   |                   |                |                                    |



- NOTES:
1. ALL MINEX-C RMUs ARE FITTED WITH THE ANTI-BURST SYSTEM INSTALLED IN THE RMU TANK AS WELL AS THE CABLE COMPARTMENTS.
  2. ALL RMUs SHALL BE RATED AT 24KV, REFER TO STANDARDS BULLETIN S01-061.
  3. SWITCH ISOLATORS (K CUBICLES) ARE RATED AT 630A.
  4. FUSED SWITCHES (T CUBICLES) ARE RATED AT 200A.
  5. RMU FAULT RATING IS 25KA.1SEC.
  6. ALL BUSHINGS SHALL BE 630A IN ACCORDANCE WITH DIN 47636.
  7. ALL CABLE DESTINATION AND SWITCH NUMBER TAGS SHALL BE ATTACHED TO THE RMU AT THE SPECIFIED LOCATIONS WITH FACTORY PROVIDED SCREWS.
  8. HORTSMANN COMPASS B FAULT INDICATORS SHALL BE FITTED TO SWITCH CUBICLE 1 ON EVERY MINEX-C RMU. COMPASS B FAULT INDICATORS SHALL BE FITTED WITH 3 PHASE CT'S. IF A SUMMATION CT IS FITTED REPLACE IT WITH ITEM NUMBER 501788 AND RECONFIGURE THE FAULT INDICATOR.
  10. ALL CUBICLES SHALL BE FITTED WITH HORTSMANN WEGA 1.2C VOLTAGE INDICATORS.
  11. ALL FUSES USED IN MINEX-C RMUs SHALL BE 292MM LONG DIN 43625 STANDARD. REFER TO S02-01-04-03 FOR FURTHER DETAILS.
  12. ALL CABLE TERMINATIONS SHALL BE STRAIGHT SCREENED DEAD-BREAK TERMINATIONS, REFER TO TABLE B FOR ITEM NUMBERS.
  13. PHASE SEQUENCE IN K CUBICLES SHALL BE RED - WHITE - BLUE FROM THE FRONT TO BACK OF THE RMU.
  14. PHASE SEQUENCE IN T CUBICLES SHALL BE RED - WHITE - BLUE FROM LEFT TO RIGHT AS THE OPERATOR LOOKS AT THE RMU.



MINEX-C 24kV/630A



DRIESCHER MINEX-C KKT  
ITEM NUMBER: 413953

| TABLE B                            |             |
|------------------------------------|-------------|
| XLPE CABLE TERMINATION BOOTS, 11kV |             |
| CABLE SIZE sq mm                   | ITEM NUMBER |
| 95 ALUMINIUM                       | 414778      |
| 240 ALUMINIUM                      | 414779      |
| 300 COPPER                         | 414780      |
| 400 ALUMINIUM                      | 501664      |
| XLPE CABLE TERMINATION BOOTS, 22kV |             |
| CABLE SIZE sq mm                   | ITEM NUMBER |
| 120 COPPER                         | 414781      |
| 240 ALUMINIUM                      | 414783      |
| 240 COPPER                         | 414782      |

| ITEM No | DESCRIPTION  |
|---------|--|
| 1       | HORTSMANN WEGA 1.2C VOLTAGE PRESENCE INDICATOR     |
| 2       | CABLE DESTINATION TAG                              |
| 3       | SWITCH ISOLATOR OPERATING MECHANISM                |
| 4       | EARTH SWITCH OPERATING MECHANISM                   |
| 5       | SWITCH NUMBER TAG                                  |
| 6       | ABS OPERATION INDICATOR                            |
| 7       | HORTSMANN COMPASS B FAULT INDICATOR                |
| 8       | RMU DATA NAME PLATE                                |
| 9       | INSULATION SPARK TEST POINT                        |
| 10      | INSULATION GAS PRESSURE INDICATOR                  |
| 11      | FUSE SWITCH OPERATION MECHANISM                    |
| 12      | FUSE EARTHING SWITCH OPERATION MECHANISM           |
| 13      | FUSE INDICATOR MIMIC                               |
| 14      | SCREW-IN TYPE PALM CONNECTOR (SET OF 3) (*504912). |

3

ITEM 14 ADDED.AMENDED NOTES 1, 2, 3, 4, 8, 10, 11, 13 & 14.

2

TITLEBLOCK & DRAWING NO FORMATTED

1

NOTE 8 AMENDED, NOTE 9 REMOVED

0

ISSUED FOR CONSTRUCTION

NO

DESCRIPTION

DRN

DATE

CKD

APPD

AMENDMENTS

PowerWater

NORTHERN TERRITORY

DES

B.CHEUNG

DRN

C.McLAREN

CKD

A.TAYLOR

APPD

B.CHEUNG

SCALE

N.T.S.

ISSUED

NOV'12

ALL DIM. IN mm

DRAFTING STANDARD TO A.S.1100

POWER STANDARD DRAWING

SWITCHGEAR

DRIESCHER MINEX-C RMU

SHEET 3 OF 3 TYPE KKT

A3

DRAWING NUMBER

S02-01-04-22\_3

3

AMDT

CAD PRODUCT - DO NOT AMEND MANUALLY