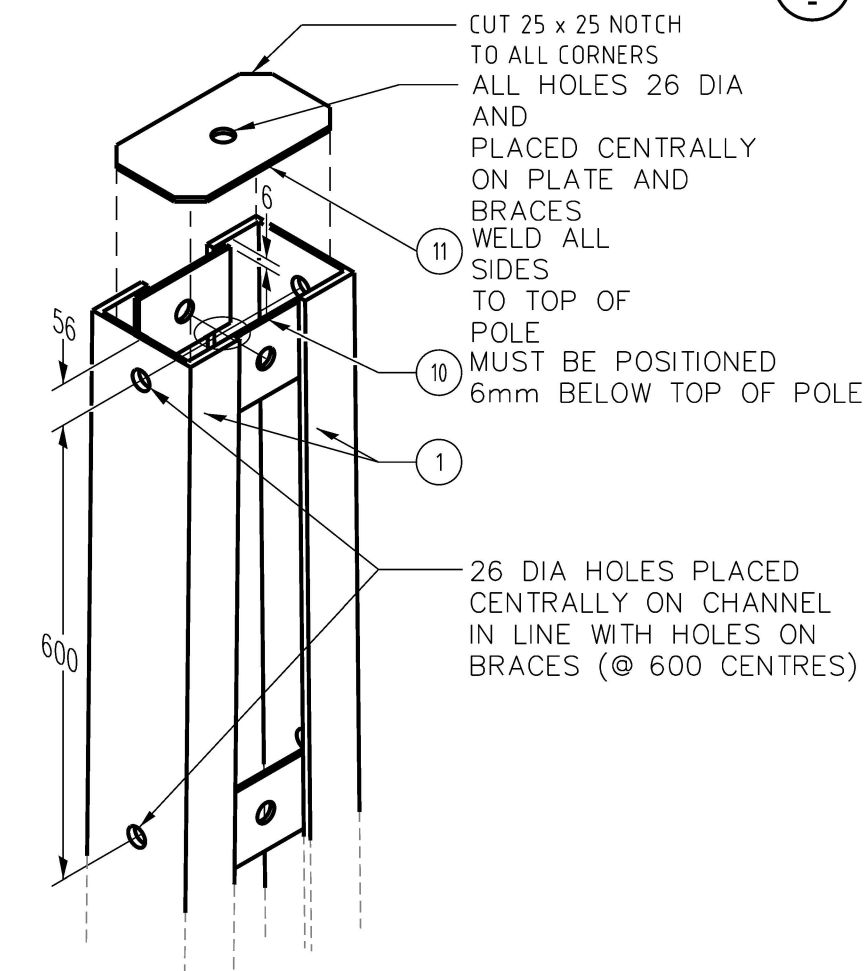
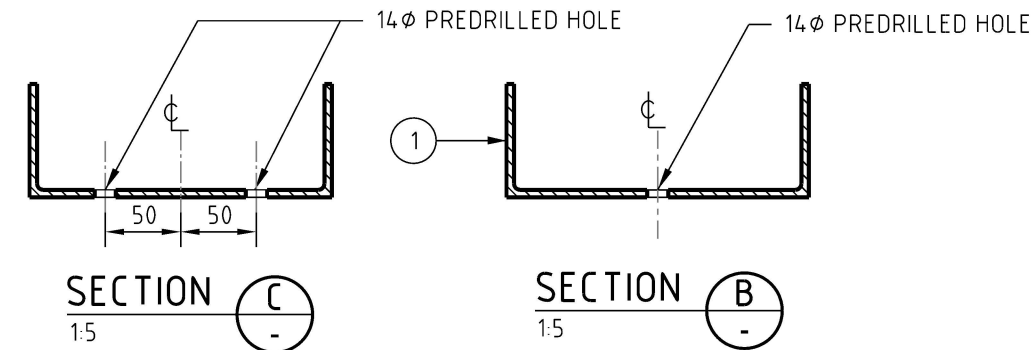


SIDE VIEW
SCALE 1:40



A
ISOMETRIC VIEW
NTS



NOTES

- TOP PLATE AND BASE PLATE DO NOT FORM PART OF THE OVERALL DIMENSION
- BRACES AND GROUND PLATE TO BE WELDED ON INSIDE OF POLE AND TO HAVE 18mm MIN OVERLAP. ANTI-CLIMBING PLATE TO BE WELDED ON OUTSIDE OF POLE
- ALL WELDS TO BE 6mm FILLET CONTINUOUS WELD EXCEPT ANTI-CLIMBING PLATE WHICH IS TO HAVE 6mm FILLET 150mm LONG AT BOTH ENDS AND CENTRE
- ALL ROUGH OR BURRED EDGES ARE TO BE DRESSED CLEAN
- STEEL TO BE GRADE 300 PLUS
- PFC DIMENSIONS ARE TO AS 3679
- WELDING TO COMPLY WITH AS 1554
- TOLERANCES TO DIMENSIONS OVER 5m IS +/- 5mm
- EACH POLE IS TO BE ENGRAVED WITH THE SIZE, TARE WEIGHT, FABRICATORS NAME AND MONTH AND YEAR OF FABRICATION
- ENGRAVING SHALL BE IN LETTERS NO LESS THAN 10mm HIGH AND 0.05mm DEEP AND POSITIONED ON THE FIRST GUSSET PLATE ABOVE GROUND LEVEL
- POLES TO COMPLY WITH STSP 01-002
- SPLICE VERSION OF THE POLE 13.5D REFER DRG S01-01-01-36
- 14mm PREDRILLED HOLES FOR EARTH BOND AND NEUTRAL BOND TERMINATION

LINE POLE 13.5D TOTAL MASS 1270KG

STANDARD - ITEM NUMBER : 298497
HD GALVANISED - ITEM NUMBER : 501245

ITEM	QTY	MATERIAL DESCRIPTION
1	2	250 x 90 PFC, 14550 LONG
2	1	605 x 100 x 10 FMS, BASE PLATE
3	8	450 x 200 x 10 FMS, FOOTING BRACES
4	2	450 x 500 x 10 FMS, GROUND PLATE
5	2	450 x 200 x 10 FMS, BRACE UNDER A/CL PLATE
6	2	350 x 1400 x 6 FMS, ANTI-CLIMBING PLATE
7	4	330 x 200 x 10 FMS, MID BRACES
8	8	260 x 200 x 10 FMS, BRACE 26 DIA HOLE
9	6	220 x 200 x 10 FMS, BRACE 26 DIA HOLE
10	2	220 x 100 x 10 FMS, BRACE 26 DIA HOLE
11	1	268 x 238 x 10 FMS, TOP PLATE 26 DIA HOLE, NOTCHED 25x25 EACH CORNER

7	AMENDED ITEM 11, IMPROVED IMAGERY, AMENDED NOTE 5, ADDED NOTES 11,12 & 13	P.G.	MAR'23	B.V.	B.C.
6	ADDED ADDITIONAL EARTH CONNECTION AT POLE BASE. REMOVED ITEMS 12,13 & 14	A.N.	JUL'21	A.N.	B.C.
5	UPDATED ITEM 6. REFORMATTED TEXT & TABLE.	H.E.	JAN'20	H.E.	B.C.
4	TITLE UPDATED	K.T.	DEC'16	C.C.	C.C.
3	TITLEBLOCK & DRAWING NUMBER FORMATTED, HD GALVANISED ITEMS ADDED	A.T.	MAR'16	I.B.	A.T.
2	POLE MASS, ITEM 13 & 14 ADDED. NOTE 9 & ITEM 12 AMENDED, 13mm HOLE FOR PADLOCK REMOVED	K.I.	OCT'05	R.C.	C.C.
1	13mm HOLES FOR PADLOCK ADDED	A.S.	OCT'03	R.C.	F.R.R.
	M12 X 40 LONG GALVANISED BOLTS ITEM 12 ADDED, ITEM 6 RAISED				
NO	DESCRIPTION	DRN	DATE	CKD	APPD
AMENDMENTS					

PowerWater
NORTHERN TERRITORY

DES		M. BOCK		POWER STANDARD DRAWING			
DRN		R. INNES		POLES LINE 13.5D BOLTED CONNECTIONS TYPE			
CKD		R. CLEOPAS					
APPD		M. BOCK					
SCALE		AS NOTED					
ISSUED		JULY '00		A3	DRAWING NUMBER	S01-01-01-13	<div>7</div>
ALL DIM. IN mm							
DRAFTING STANDARD TO A.S.1100				CAD PRODUCT - DO NOT AMEND MANUALLY			AMDT