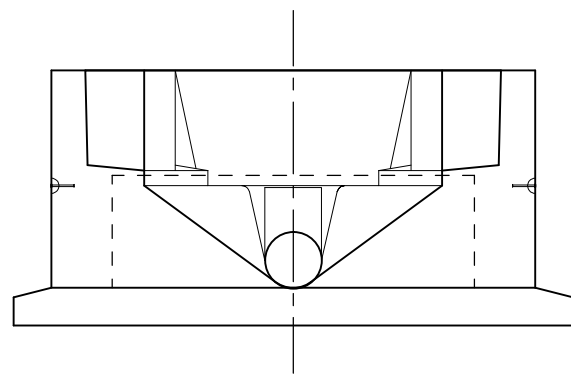
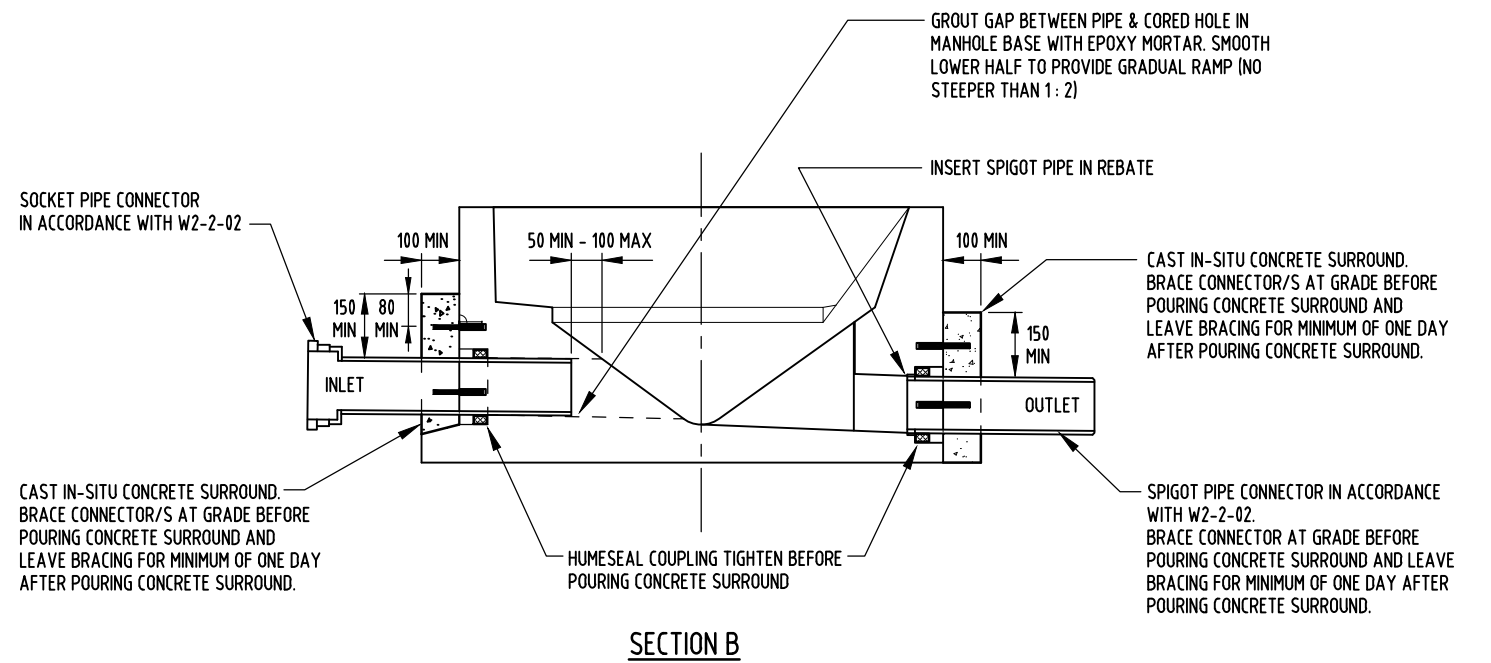


PLAN



SECTION A



NOTES:

1. PROVIDE ROCKER PIPE AS PER W2-2-02 AND W2-2-01D (DIMENSIONS L2).
2. IF LAYING SEWER FROM LOWEST POINT TO HIGHEST POINT (TYPICAL), INSERT SPIGOT PIPE CONNECTOR INTO ACCESS CHAMBER BASE OUTLET BEFORE FINAL POSITIONING OF ACCESS CHAMBER BASE. COMPLETE CONNECTION OF SEWER TO ACCESS CHAMBER OUTLET DURING FINAL POSITIONING OF ACCESS CHAMBER BASE. TIGHTEN HUMESEAL AFTER POSITIONING OF ACCESS CHAMBER BASE.
3. IF LAYING SEWER FROM HIGHEST POINT TO LOWEST POINT, INSERT SOCKET PIPE CONNECTOR/S INTO ACCESS CHAMBER BASE INLET/S BEFORE FINAL POSITIONING OF ACCESS CHAMBER BASE. POSITION ACCESS CHAMBER BASE THEN SLIDE SOCKET PIPE CONNECTOR/S OUTWARDS TO CONNECT TO LAID SEWER, BUT DO NOT EXCEED DIMENSION L1. TIGHTEN HUMESEAL AFTER CONNECTION TO LAID SEWER.
4. SUPER BOWL SURFACE TO BE FREE OF ANY OBSTRUCTIONS WHICH MAY RETAIN SILT OR SEDIMENT.
5. EDGES ON FORMED OUTLET AND COVERED INLETS INSIDE THE SUPER BOWL TO BE FINISHED WITH 5mm RADIUS CURVE.
6. SUPER BOWL TO BE INSTALLED LEVEL AND TO MANUFACTURER'S SPECIFICATIONS.

2	GENERAL AMENDMENTS 2021.	PW	DEC '21	IL	DC
1	ISSUED FOR REVIEW AND COMMENTS	PW	SEPT '21	IL	DC
A	ISSUED FOR INFORMATION	AW	07/06/11	RJ	
NO	DESCRIPTION	DRN	DATE	CKD	APPD
AMENDMENTS					



DES	RJ	SEWERAGE STANDARD DRAWING	
DRN	AW	SEWER MAINS - ACCESS CHAMBERS	
CHK		HUMES PRECAST SUPER BOWL BASE	
APPD		INSTALLATION DETAILS	
SCALE	N.T.S.	A3	DRAWING NUMBER W2-2-2B
ISSUED	06/11	CAD PRODUCT - DO NOT AMEND MANUALLY	
ALL DIM. IN mm			2
DRAFTING STANDARD TO A.S.1100		AMDT	