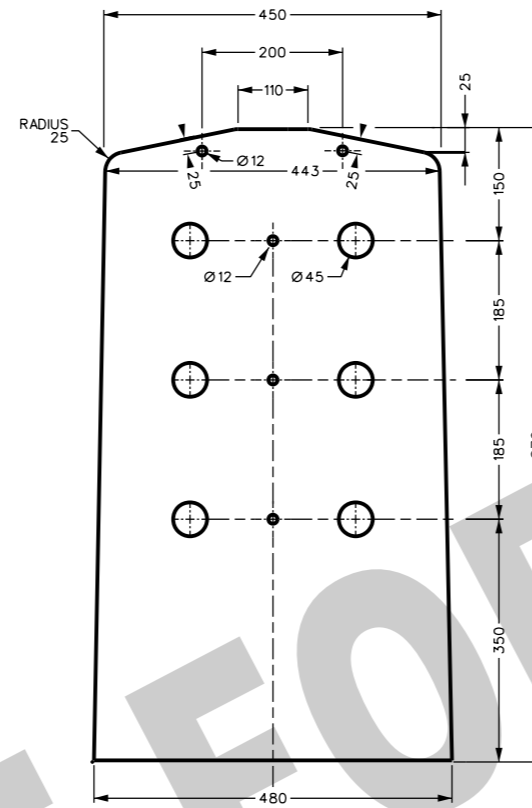
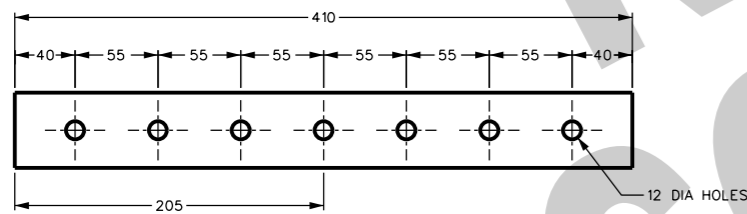


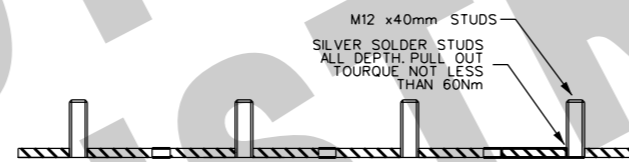
DETAIL 1
PANEL ASSEMBLY
SCALE 1:5



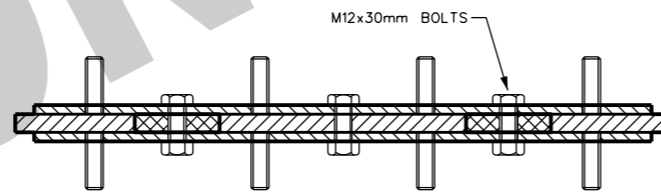
DETAIL 2
MATERIAL: 12mm BAKELITE
SCALE 1:5



DETAIL 3
BUSBAR SECTION
410x50x6.3 COPPER BAR
6 OFF
SCALE 1:2.5



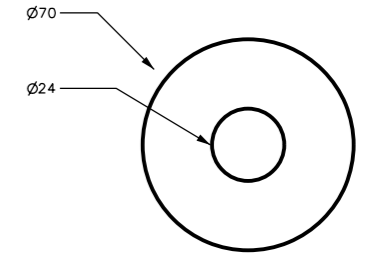
DETAIL 4
STUD FIXINGS TO BUSBAR
SCALE 1:2.5



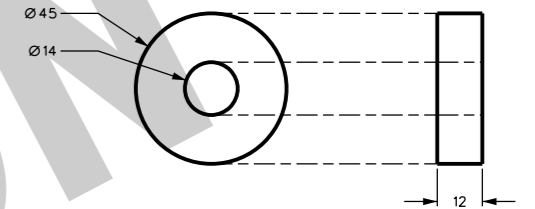
SECTION A-A
BUSBAR & PANEL
SCALE 1:2.5

NOTES:

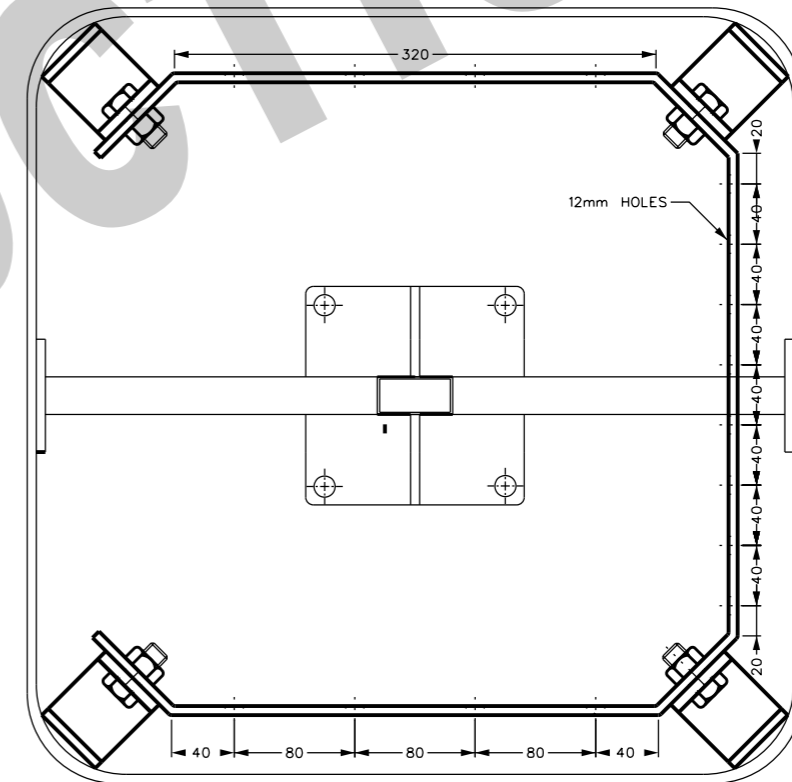
- FIBERGLASS COVER (ITEM NUMBER 31138) REFER TO DWG S02-01-03-06. NOTE GROMMET FOR HOLE IN COVER NOT REQUIRED
- ALL NUTS, BOLTS, STUDS AND WASHERS TO BE GALVANISED TO AS 4680 & AS 1214



COVER SEALS
MATERIAL: INSERTION RUBBER
2mm THICK
2 OFF
SCALE 1:1



COPPER SPACERS
6 OFF
SCALE 1:1



NEUTRAL BAR ASSEMBLY
SCALE 1:5

| 2 | SET TO 'NOT FOR NEW CONSTRUCTION'. CHANGED 'STOCK CODE' TO 'ITEM NUMBER'. EDITED TITLE BLOCK & NOTE 2. REFORMATTED TEXT. SUPERSEDED BY S02-02-03-08 | A.N. | JUL'21 | C.C.C. | B.V. |
|------------|---|------|--------|--------|------|
| 1 | | J.C. | NOV'10 | A.T. | S.C. |
| NO | DESCRIPTION | DRN | DATE | CKD | APPD |
| AMENDMENTS | | | | | |



| | | | | | |
|-------------------------------|------------|--|-------------------|--------------|------|
| DES | A. WHYTE | POWER STANDARD DRAWING | | | |
| DRN | N. HORDERN | FUSED DISTRIBUTION PILLAR PANEL LAYOUT AND DETAIL | | | |
| CKD | S. SAWYER | | | | |
| APPD | F. ROBSON | | | | |
| SCALE | AS SHOWN | | | | |
| ISSUED | APR'01 | A3 | DRAWING NUMBER | S02-01-03-08 | |
| ALL DIM. IN | mm | | | | |
| DRAFTING STANDARD TO A.S.1100 | | CAD PRODUCT - DO NOT AMEND MANUALLY | | | AMDT |