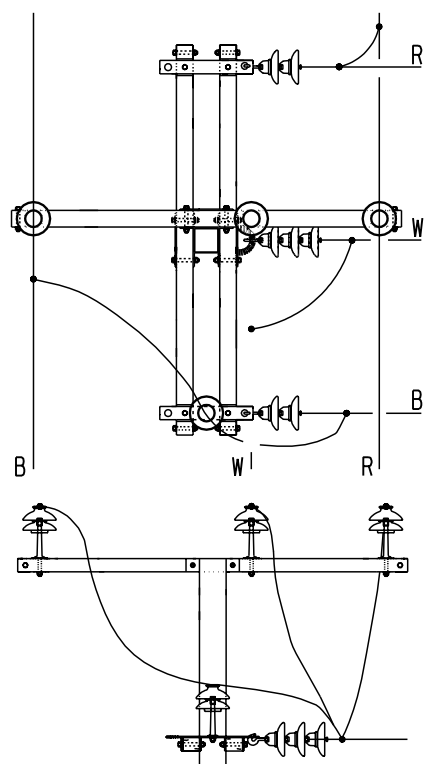


THROUGHLINE
DEVIATION
7° - 14° MAX.

TEE-OFF
DEVIATION
0° - 30° MAX.

NOTE
SINGLE WOODEN
STRAIN CROSSARM
TO BE USED FOR
SLACK SPANS.

TYPE 'R'

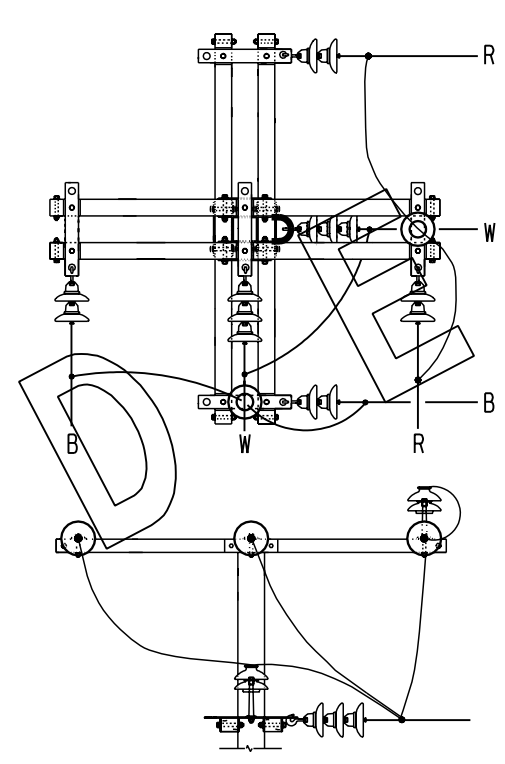


THROUGHLINE
DEVIATION
0° - 7° MAX.

TEE-OFF
DEVIATION
0° - 30° MAX.

NOTE
SINGLE WOODEN
STRAIN CROSSARM
TO BE USED FOR
SLACK SPANS.

TYPE 'S'

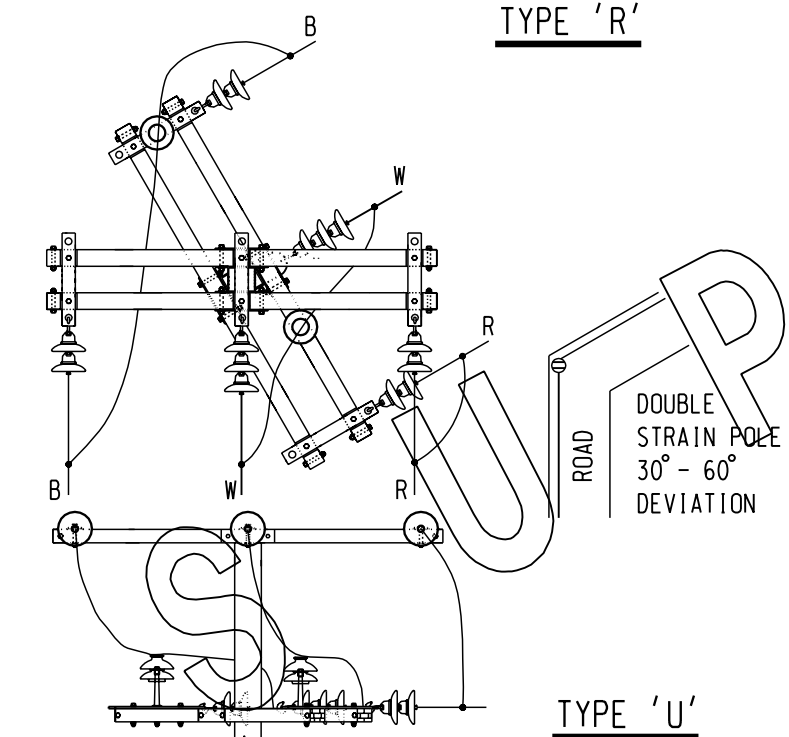


THROUGHLINE
DEVIATION
0° - 7° MAX.

TEE-OFF
DEVIATION
0° - 30° MAX.

NOTE
SINGLE WOODEN
STRAIN CROSSARM
TO BE USED FOR
SLACK SPANS.

TYPE 'T'

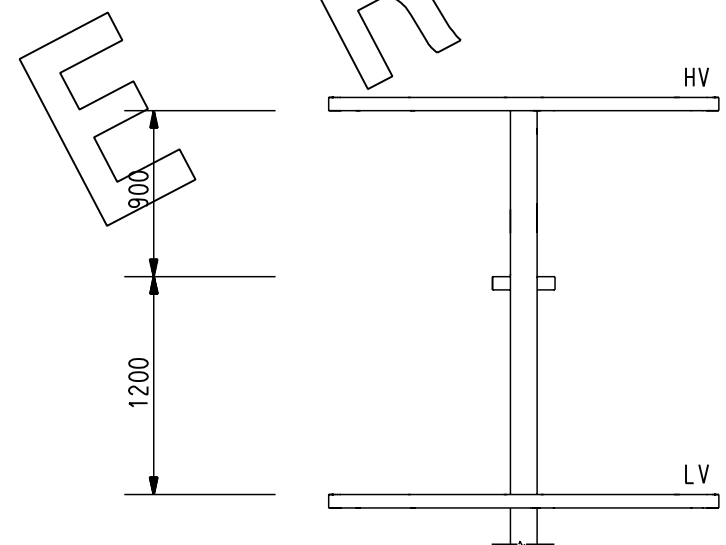


THROUGHLINE
DEVIATION
7° - 14° MAX.

TEE-OFF
DEVIATION
0° - 30° MAX.

NOTE
SINGLE WOODEN
STRAIN CROSSARM
TO BE USED FOR
SLACK SPANS.

TYPE 'U'



CROSSARM SPACING

NOTE

- IDENTIFICATION OF CONDUCTORS :
R - RED PHASE
W - WHITE PHASE
B - BLUE PHASE
- MAINTAIN PHASING WITH RED TOWARDS ROADWAY.
- ALL METAL LOAD BEARING ATTACHMENTS ARE TO BE WELDED TO POLE WITH FULL CIRCLE 6mm CONTINUOUS FILLET WELDS UNLESS NOTED OTHERWISE.
- CONICAL SPIRAL WASHERS ARE TO BE USED IN CONJUNCTION WITH INSULATOR PINS AND WOODEN CROSSARM BOLT ASSEMBLIES.
- HV POLE TOP UNIT TYPE 'T' REFER TO DGN S01-02-02-10
HV POLE TOP UNIT TYPE 'S' REFER TO DGN S01-02-02-10
HV POLE TOP UNIT TYPE 'R' REFER TO DGN S01-02-02-11
HV POLE TOP UNIT TYPE 'U' REFER TO DGN S01-02-02-11

6	SUPERSEDED	A.T.	DEC'12	B.C.	B.C.
5	DRAWING REFERENCE TO TYPE 'U' ALTERED	RAJ	JUL'96	RAJ	S.C.
4	OBSOLETE WARNINGS ADDED.	J.A.L	JAN'97	A.G.B	F.R.R
3	ROAD INDICATED ON INTERSECTIONS. NOTE 2 AMENDED.	J.A.L	MAY'95	S.C.M.P	J.D
2	REDRAWN ON CAD, NOTE 3 AMENDED.	G.R.	JUN'94	A.G.B	A.G.
NO	DESCRIPTION	DRN	DATE	CKD	APPD
AMENDMENTS					



DES	-	POWER STANDARD DRAWING	
DRN	G.R.	POLE TOP UNITS	
CKD	A.G.B.	H.V	
APPD	J.P.KING	WOODEN CROSSARM	
SCALE	N.T.S	TYPE R,S,T & U	
ISSUED	JUN'94	A3	DRAWING NUMBER S01-02-02-07
ALL DIM.	IN mm		
DRAFTING STANDARD TO A.S.1100		CAD PRODUCT - DO NOT AMEND MANUALLY	

