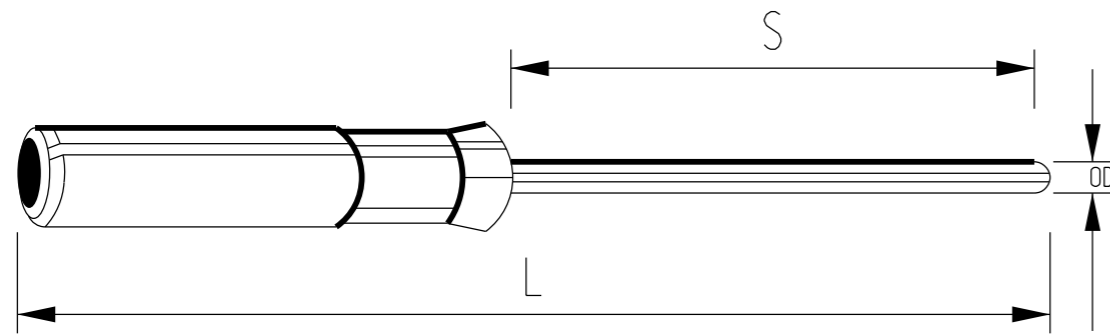
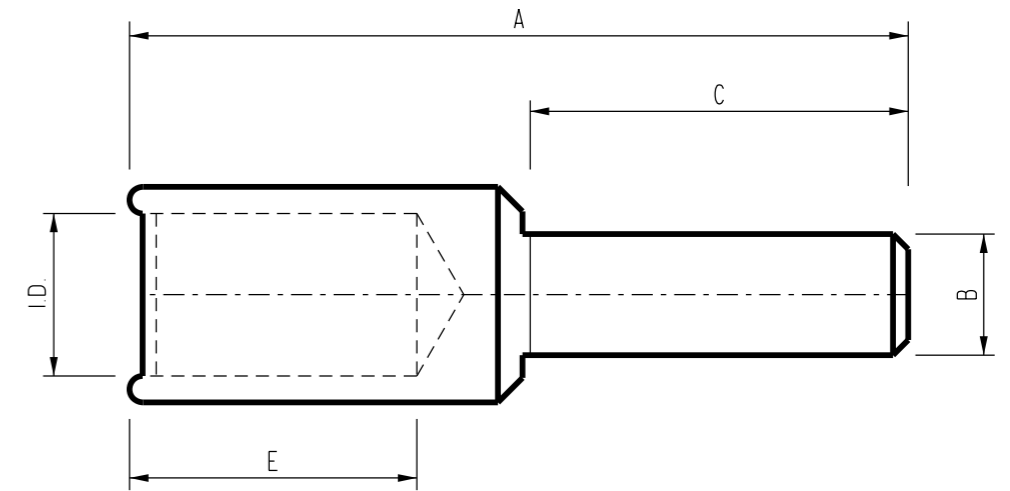


3RD ANGLE -DO NOT SCALE - REPORT ANY ERRORS, OMISSIONS TO DRAFTING OFFICE



ITEM 1: BI-METAL TERMINAL ADAPTOR

MATERIAL:
 ROD - COPPER ELECTRO - TINNED
 SLEEVE - DRAWN ALUMINIUM



ITEM 2: COPPER STALK LUG

TECHNICAL DATA

CONDUCTIVE MATERIALS
 COPPER 99.95 %
 OXYGEN CONTENT 30 PPM
 TENSIL STRENGTH 200 MPa
 DUCTILE RATING 40%
 FINAL METAL STATE FULLY ANNEALED
 OPERATING TEMPERATURE -55°C
 GENERAL ELECTRIC PROPERTIES
 TOTAL CONDUCTIVITY 99.77 % IACS
 TOTAL RESISTIVITY 1.738 μ-ohm cm
 TOOLING IS INTERCHANGEABLE BETWEEN MANUFACTURERS.

ITEM NUMBER	CONDUCTOR				RANGE (mm)	NOMINAL DIMENSION (mm)		
	AAC/AAAC		ACSR/GZ			L	S	OD
	STRANDING	CODE	STRANDING	CODE				
5140	-	-	3/4/2.50	RAISIN	4.6 - 8.4	211	152	6.4
5017	7/3.00	LIBRA & FLUORINE	6/1/3.00	APPLE	7.8 - 11.4	237	152	7.9
	7/3.75	MARS	6/1/3.75	BANANA				
115329	7/4.50	MERCURY & HYDROGEN	6/1/3.75 6/4.75	CHERRY	13.5 - 14.5	270	152	9.5
4978	19/3.75	PLUTO & NEON	30/7/2.50	GRAPE	16.5 - 19.5	299	152	12.7

NOTES:

- ITEM 1 ADAPTORS SHALL BE USED WHEN CONNECTING ALUMINIUM CONDUCTORS TO AIRBREAK SWITCH CONTACT ASSEMBLIES.
- ITEM 2 COPPER STALK LUG SHALL BE USED FOR (GBS) GAS BREAK SWITCH 120mm CABLE (EPR) TAIL TO LIVE LINE CLAMP.
- ITEM 1 SIMILIAR TO TYOE BA TERMINAL JUMPER ADAPTORS.
- FITTINGS TO BE PREFILLED WITH INHIBITOR COMPOUND SIMILAR TO UTILUX No 2G(H2336).
- FITTINGS TO BE IDENTIFIED WITH CABLE RANGE AND CRIMPING INSTRUCTIONS.
- FITTINGS TO BE DESIGNED FOR COMPRESSION BY HEXAGONAL OR INDENT TYPE COMPRESSION TOOLS.
- FITTINGS TO BE INDIVIDUALLY PACKED IN PLASTIC BAG.

CONDUCTOR C.S.A. (SQ.MM)	ITEM NUMBER	NOMINAL DIMENSIONS (mm)				BELL MOUTH	I.D. (mm)	DIE A/F (mm)	NO. OF CRIMPS
		A	B	C	E				
120	402098	82	12	40	30	NO	16.5	16.5	1
150	406790	94	12	50	30	YES	18.3	16.5	1
70	156471	87	12	50	24	YES	11.5	11.5	1
35	407173	-	12	50	21	YES	8.5	9.2	1

NO	DESCRIPTION	DRN	DATE	CKD	APPD
10	RENUMBERED NOTES. ADDED NOTE & DIE A/F. REFORMATTED TEXT. REMOVED MANUFACTURER DIES. ADDED AAAC CONDUCTORS.	A.N.	AUG'21	C.C.C.	B.V.
9	TITLEBLOCK & DRAWING NUMBER FORMATTED	K.T.	DEC'18	C.C.	C.C.
8	STOCK CODE ADDED	J.C.	APR'08	B.C.	S.C.
7	STALK LUGS ADDED	J.C.	NOV'07	B.C.	B.C.
6	STALK LUGS ADDED	K.I.	JUN'06	RAJ	BAO
5	STALK LUGS ADDED	A.S.	OCT'04	-	C.F.
4	ITEM 2: COPPER STALK LUG ADDED	A.S.	MAY'98	R.C.	F.R.
3	REDRAWN ON CAD	A.D.	MAR'87	R.C.	-
2	STOCK CODES, NUMBER, TITLE AMENDED	W.T.	MAR'86	-	-



DES	G.McSHANAG	POWER STANDARD DRAWING	
DRN	A.DAVIS	LINE HARDWARE	
CKD	R.INNES	BI-METAL TERMINAL ADAPTOR AND COPPER STALK LUGS	
APPD	F.ROBSON	A3	DRAWING NUMBER S01-01-04-21
SCALE	N.T.S.		
ISSUED	MAY'98	DRAFTING STANDARD TO A.S.1100	
ALL DIM. IN mm		CAD PRODUCT - DO NOT AMEND MANUALLY	

