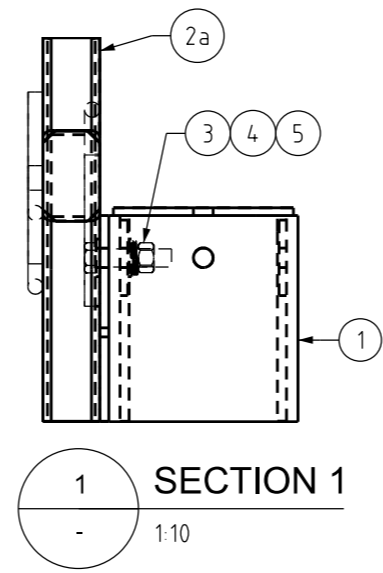
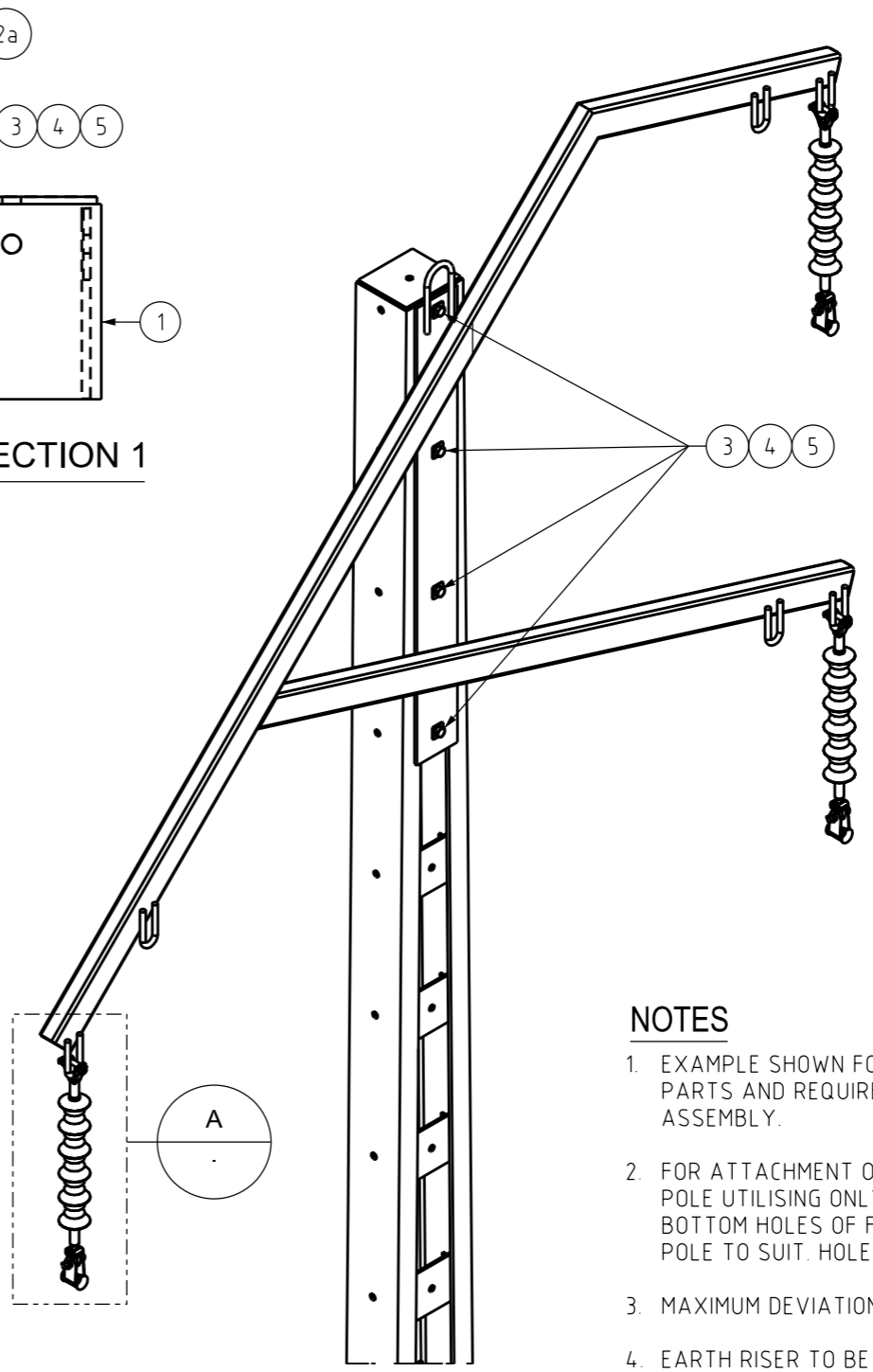


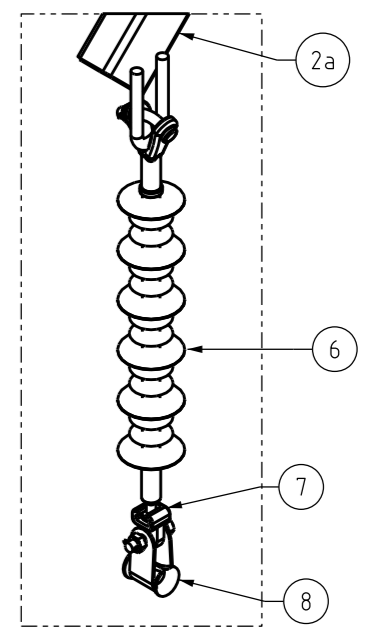
FRONT VIEW  
1:40



SECTION 1  
1:10



ISOMETRIC VIEW  
1:25



DETAIL A  
1:20

**NOTES**

1. EXAMPLE SHOWN FOR WISHBONE RIGHT HAND ONLY. SAME PARTS AND REQUIREMENTS APPLY FOR WISHBONE LEFT HAND ASSEMBLY.
2. FOR ATTACHMENT ON TO WELDED POLE SOLUTION, FASTEN TO POLE UTILISING ONLY TWO OF THE TOP AND TWO OF THE BOTTOM HOLES OF FASTENING PLATE. DRILL TWO HOLES ON POLE TO SUIT. HOLES NOT TO BE DRILLED IN WELD SEAM.
3. MAXIMUM DEVIATION 22°
4. EARTH RISER TO BE INSTALLED AS REQUIRED.

8	3	AGSU SUSPENSION CLAMP	S01-01-04-04	-
7	3	SOCKET CLEVIS	S01-01-04-02	-
6	3	16mm BALL - "Y" CLEVIS POLYMER SUSPENSION INSULATOR	S10-01-04-10	300491
5	4	M24 HELICAL SPRING WASHERS	S01-01-04-43	114330
4	4	M24 SQUARE WASHER HOT DIP GALV	S01-01-04-43	298828
3	4	M24 x 65mm METRIC HEXAGON BOLTS WITH NUTS	S01-01-04-43	400801
2b	1	WISHBONE ARM LEFT HAND	S10-01-02-01	504920
2a	1	WISHBONE ARM RIGHT HAND	S10-01-02-01	504921
1	1	POLE	-	-
ITEM	QTY	DESCRIPTION	DRG NUMBER	ITEM NUMBER

**MATERIAL SCHEDULE**

0	ISSUED FOR CONSTRUCTION	C.C.	OCT-22	B.V.	B.C.
NO	DESCRIPTION	DRN	DATE	CKD	APPD
AMENDMENTS					



DES	A TAYLOR	POWER STANDARD DRAWING			
DRN	C COPPINS	ASSEMBLIES 66kV WISHBONE ARRANGEMENT FOR UNIVERSAL POLE CONSTRUCTION			
CKD	B VANDERSTELT				
APPD	B CHEUNG				
SCALE	AS SHOWN	A3	DRAWING NUMBER	S10-02-05-23	
ISSUED	OCT-22				
ALL DIM. IN mm		DRAWING NUMBER		S10-02-05-23	
DRAFTING STANDARD TO A.S.1100			CAD PRODUCT - DO NOT AMEND MANUALLY		AMDT