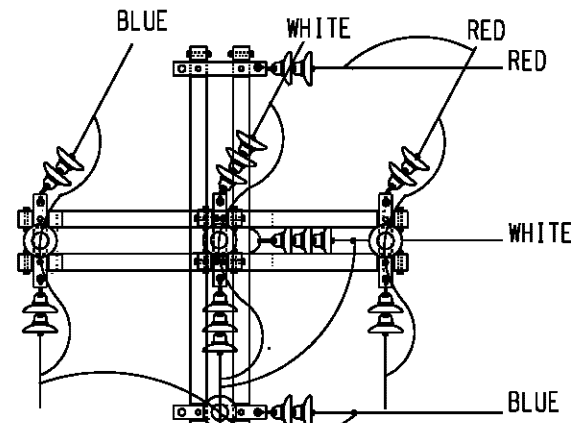
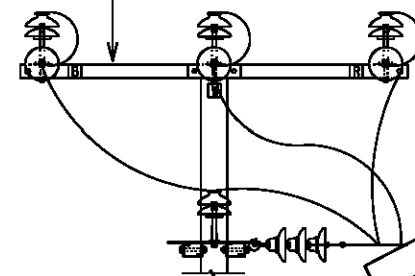


STANDARD
TRANSPPOSITION
TERMINATION

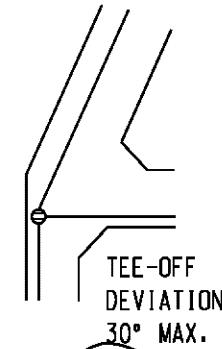


REFER NOTE 6



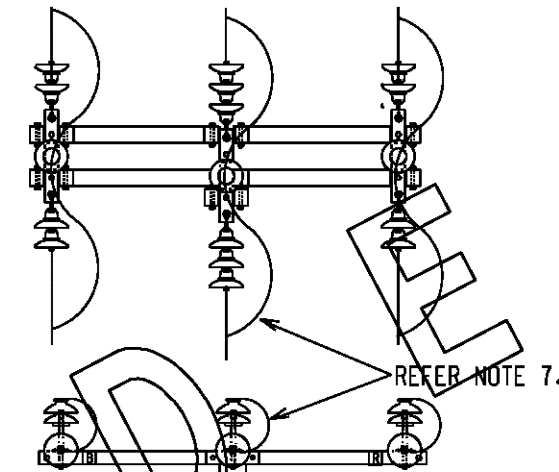
TYPE 'W'

THROUGH LINE
DEVIATION
30° MAX.

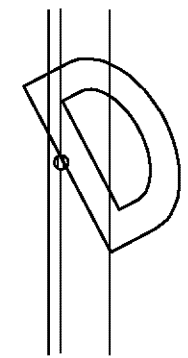


NOTES :

- IDENTIFICATION OF CONDUCTORS :
R - RED PHASE
W - WHITE PHASE
B - BLUE PHASE
- MAINTAIN PHASING WITH RED PHASE TOWARDS ROADWAY EXCEPT FOR TYPE 'V' CONSTRUCTION.
- ALL METAL LOAD BEARING ATTACHMENTS ARE TO BE WELDED ONTO POLE WITH FULL CIRCLE 6mm FILLET WELD.
- CONICAL SPIRAL WASHERS ARE TO BE USED IN CONJUNCTION WITH INSULATOR PINS AND WOODEN CROSSARM BOLT ASSEMBLIES.
- HV POLE TOP UNIT TYPE 'V' REFER TO DGN S01-02-02-12
HV POLE TOP UNIT TYPE 'W' REFER TO DGN S01-02-02-13
HV POLE TOP UNIT TYPE 'X' REFER TO DGN S01-02-02-09
HV POLE TOP UNIT TYPE 'Y' REFER TO DGN S01-02-02-09
HV POLE TOP UNIT TYPE 'Z' REFER TO DGN S01-02-02-09
- TYPE 'W' - SINGLE WOODEN STRAIN TEE - OFF CROSSARM TO BE USED FOR SLACK SPANS.

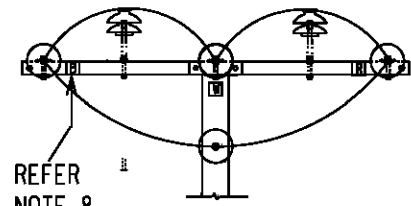


TYPE 'X'



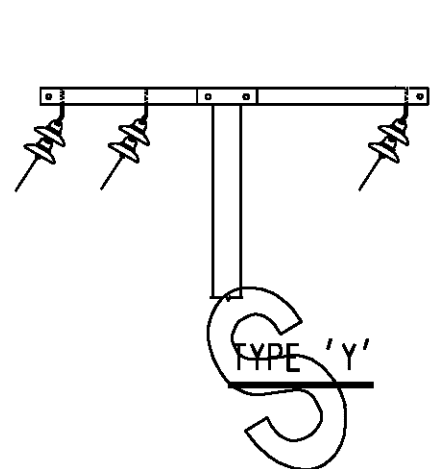
STANDARD STRAIGHT
THROUGH TERMINATION
& END TERMINATION ('XX')

- TYPE 'X' - FOR CENTRE PHASE USE DOUBLE INSULATED BRIDGING CONDUCTOR (XLPE 185 sqmm).
- TYPE 'V' - PHASE SIGNS TO BE INSTALLED ON EACH SIDE OF POLETOP ASSEMBLY.



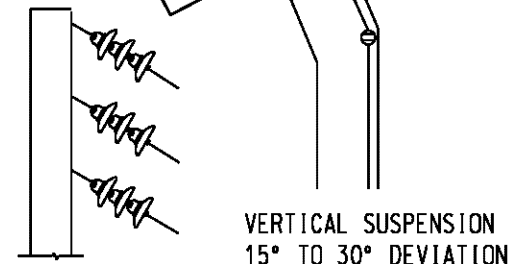
REFER
NOTE 8

TYPE 'V'



INTERMEDIATE ANGLE
SUSPENSION 7° TO 30°

TYPE 'Y'



VERTICAL SUSPENSION
15° TO 30° DEVIATION

TYPE 'Z'

NO	DESCRIPTION	DRN	DATE	CKD	APPD
6	SUPERSEDED	A.T.	DEC'12	B.C.	B.C.
5	DRAWING REFERANCE ALTERED. OBSOLETE WARNINGS ADDED.	J.A.L.	JAN'97	S.C.M.F.	R.R.
4	CHANGES TO NOTES 2 AND 3. CHANGES TO TYPE 'Y' POLE TOP.	J.A.L.	MAY'95	S.C.M.P.	J.D
3	REDRAWN ON CAD. NOTE 8 AMENDED.	G.R.	JUN'94	pmc	CHY
NO	DESCRIPTION	DRN	DATE	CKD	APPD
AMENDMENTS					

PowerWater
NORTHERN TERRITORY

DES -		POWER STANDARD DRAWING	
DRN	G.R	POLE TOP UNITS	
CKD	pmc	H.V	
APPD	J.KING	WOODEN CROSSARM	
SCALE	N.T.S	TYPE V,W,X,Y, & Z	
ISSUED	MAR'94	A3	DRAWING NUMBER
ALL DIM. IN mm			S01-02-02-06
DRAFTING STANDARD TO A.S.1100		CAD PRODUCT - DO NOT AMEND MANUALLY	

