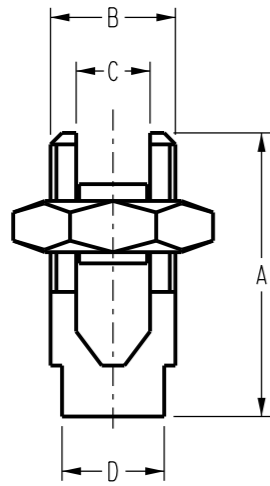
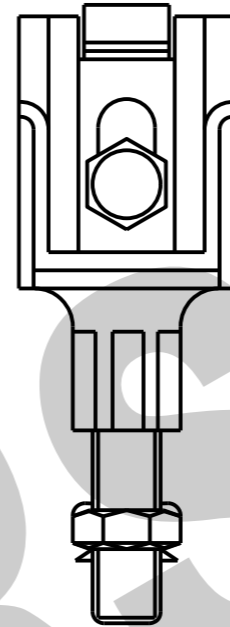


3RD ANGLE -DO NOT SCALE - REPORT ANY ERRORS, OMISSIONS TO DRAFTING OFFICE

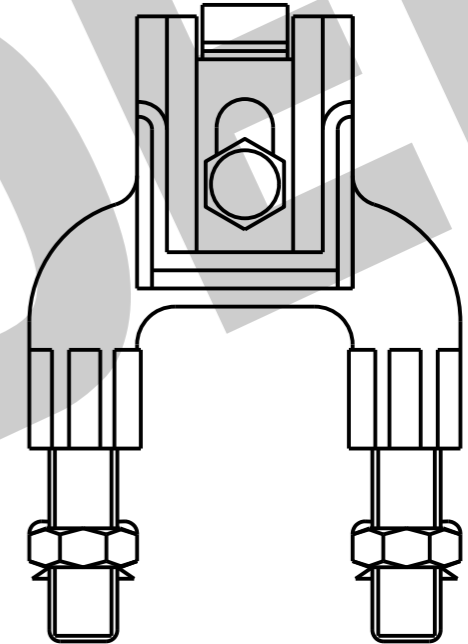
NOTE: CLAMPS TO BE PREPACKED WITH JOINTING GREASE SIMILAR TO "ALUMINOX" OR "UTILUX H2397".
ITEM NUMBER: 6981



CLAMP-SPLIT BOLT
TO SUIT COPPER CONDUCTOR
ITEM 1 TO 5
MATERIALS - BRASS



ITEM 6
CLAMP - ALUMINIUM TO COPPER - SINGLE
ITEM NUMBER: 2212



ITEM 7
CLAMP - ALUMINIUM TO COPPER - DOUBLE
ITEM NUMBER: 6650

ITEM No.	ITEM NUMBER	MAX. COND.	DIMENSIONS			
			A	B	C	D
1	4432	16sq.mm	30	15	5	10
2	4416	35sq.mm	35	15	8	13
3	2253	70sq.mm	50	20	11	18
4	4374	185sq.mm	65	30	18	23
5	4390	95sq.mm	50	22	13	18

ITEM No.	ITEM NUMBER	MAIN COND. RANGE		SERVICE COND. RANGE
		MAX.	MIN.	
6	2212	19/3.75 (PLUTO)	7/2.50	MAX 3 x 16sq.mm CABLES
7	6650	19/3.25 (PLUTO)	7/2.50	MAX 3 x 16sq.mm PER LEG

ITEM 6 & 7
MATERIALS - BODY, ALUMINIUM
BOLT, STAINLESS STEEL
TAPPING CLAMP, BRASS (TIN PLATED)

<p>10 CLARIFIED SUPERSEDING. 'STOCK CODE' TO 'ITEM NUMBER'</p> <p>9 ITEM 6,7 SUPERSEDED</p> <p>8 CONDUCTOR SIZES CHANGED TO METRIC.</p> <p>7 REDRAWN ON CAD</p> <p>6 ADDED TABLE FOR ITEM 6 & 7</p> <p>5 REDRAWN, TITLE & NUMBER CHANGE. CLAMP-LUG CONNECTOR DELETED. NOTES CHANGED.</p>	<p>A.N. JUL '21</p> <p>K.I. SEP '05</p> <p>R.I. NOV '99</p> <p>A.D. MAY '98</p> <p>D.A. JUN '88</p> <p>R.F. OCT '87</p>	<p>C.C.C. B.V.</p> <p>C.C. C.C.</p> <p>G.H. F.R.</p> <p>R.I. F.R.</p> <p>- -</p> <p>- G.S.</p>	<p>DES -</p> <p>DRN A.DAVIS</p> <p>CKD R.INNES</p> <p>APPD F.ROBSON</p> <p>SCALE N.T.S.</p> <p>ISSUED MAY '98</p> <p>ALL DIM. IN mm</p>	POWER STANDARD DRAWING	
				LINE HARDWARE	
				CLAMPS	
				SERVICE	
				A3	DRAWING NUMBER S01-01-04-09
DRAFTING STANDARD TO A.S.1100		CAD PRODUCT - DO NOT AMEND MANUALLY	AMDT		

