

ISOMETRIC VIEW

N.T.S.

NOTES

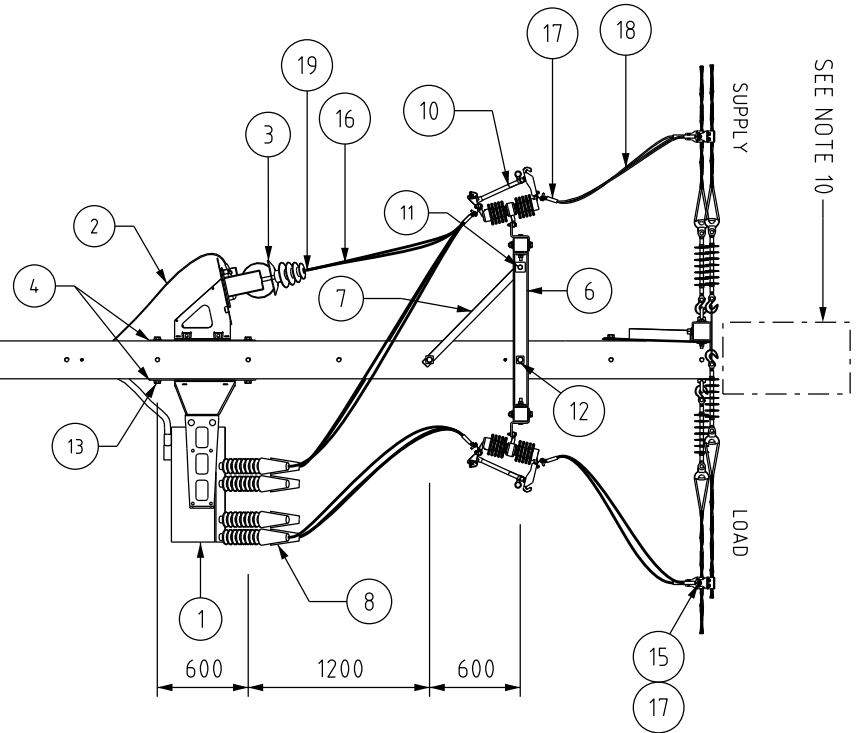
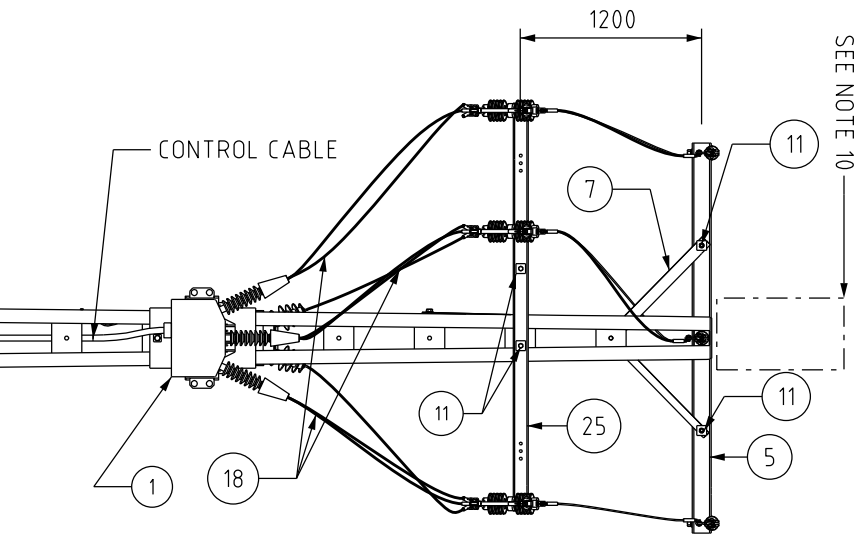
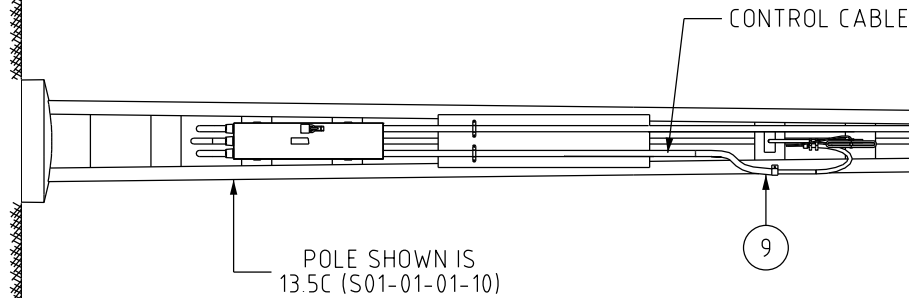
1. REFER TO S01-02-03-25 FOR RECLOSER & VOLTAGE TRANSFORMER EARTHING ARRANGEMENT.
2. FOR UNDERGROUND EARTHING ARRANGEMENT REFER TO EITHER S01-02-03-11, S01-02-03-12 OR S01-02-03-13.
3. WHERE POSSIBLE, POWER THE RECLOSER VIA A PRE- EXISTING LOW VOLTAGE NETWORK THAT IS CONNECTED TO THE SUPPLY SIDE OF THE RECLOSER REFER SHEET 2. OTHERWISE PROVIDE LV SUPPLY FROM VT AS PER SHEET 1.
5. ONLY USE A VOLTAGE TRANSFORMER IF A SUITABLE LOW VOLTAGE NETWORK IS NOT AVAILABLE. THE POWER SUPPLY ACTIVE, NEUTRAL AND EARTH SHALL COME FROM THE VOLTAGE TRANSFORMER.
6. POWER SUPPLY CONDUIT TO BE SADDLE CLAMPED TO THE POLE EVERY 1000mm. ANY OPEN CONDUIT ENDS SHALL BE POINTING TOWARDS THE GROUND.
7. REFER TO S01-02-07-16 FOR COMMUNICATIONS INSTALLATION REQUIREMENTS.
8. REFER TO S01-04-04-01 ON PROCEDURE "LINE/SERVICE POLE INSTALLATIONS CIVIL WORKS" FOR THE REQUIREMENT & INSTALLATION OF POLE CONCRETE FOUNDATIONS.
9. FOR CONTROL CUBICLE REPLACEMENT REFER TO S01-01-06-20
10. TOP MOUNT GBS TO BE INSTALLED AS A BYAPSS SWITCH ON SPUR LINE. IF INSTALLATION IS IN MESHED NETWORK WITH BACK FEED AVAILABLE TO ENERGISE EITHER SIDE OF RESLOER, BYPASS GBS IS NOT REQUIRED. FOR TOP MOUNT GBS INSTALLATION DETAILS REFER TO S01-02-07-11.



FRONT VIEW  
1:50



SIDE VIEW  
1:50



15	6	DISCONNECT TEE	S01-01-04-10	2295
13	4	M24 BOLT, 50 LONG, 2 x LARGE FLAT WASHER, SPRING WASHER & NUT	S01-01-04-43	114629,298828,114330
12	7	M24 BOLT, 180 LONG, 2 x LARGE FLAT WASHER, SPRING WASHER & NUT	S01-01-04-43	400802,113993,114330
11	3	M16 BOLT, 160 LONG, 2 x LARGE FLAT WASHER, SPRING WASHER & NUT	S01-01-04-43	400805,113985,114322
10	11	22kV ISOLATING SWITCH	S01-01-06-07	2204
9	AR	20mm DIAMETER ANACONDA CONDUIT	-	415546
8	6	22kV SURGE DIVERTER WITH BIRD CAP (SUPLIED WITH RECLOSER)	S01-01-04-19	249433
7	3	CROSSARM BRACE	S01-02-01-49	298687
6	1	HV LINK X-ARM BRACKET	S01-01-02-23	505048
5	1	HV LINE TERMINATION CROSSARM 125X125	S01-01-02-10	414398
4	2	MOUNTING BRACKET FOR EXTERNAL VOLTAGE TRANSFORMER / RECLOSER	S01-01-09-05	406941
3	1	22kV EXTERNAL VOLTAGE TRANSFORMER - REFER NOTE 4	S01-01-09-05	SUPPLY WITH RECLOSER
2	AR	LV POWER SUPPLY CABLE 2.5SQMM 2 CORE + EARTH	-	503089
1	1	NOJA OSM27 RECLOSER	S01-01-06-21	501806

ITEM	QTY	DESCRIPTION	DRAWING No.	ITEM NUMBER
------	-----	-------------	-------------	-------------


25	2	CROSSARM FIBREGLASS REINFORCED POLYMER	S01-01-02-21	406748
24	1	COMMUNICATIONS ANTENNA	S01-02-07-16	-
23	1	ANTENA MOUNTING BRACKET	S01-02-07-16	-
22	AR	LOCK NUTS FOR ANACONDA CONDUIT	-	415549
21	AR	CABLE GLAND FOR ANACONDA CONDUIT	-	415547
20	AR	EARTH TAG FOR ANACONDA CONDUIT	-	415548
19	4	LUG 35SQMM Cu COMPRESSION BELL MOUTH	S02-01-02-11	402689
18	AR	CABLE Cu 1-CORE 150 SQMM FLEXIBLE	S02-01-01-34	300368
17	24	LUG 150 SQMM Cu COMPRESSION BELL MOUTH	S02-01-02-11	402692
16	AR	CABLE Cu 1-CORE 35 SQMM FLEXIBLE	S02-01-01-34	402707

ITEM	QTY	DESCRIPTION	DRAWING No.	ITEM NUMBER
------	-----	-------------	-------------	-------------

14	AMEND ITEM 6 ITEM NUMBER AND AMEND DRAWING TITLE	P.G.	OCT'23	B.C.	B.V.
13	UPDATE HV SURGE DIVERTER CROSSARE. DELETE NOTE 4 INCLUDE SHEET 2 FOR CONTROLLER LV SUPPLY FROM OVERHEAD PREVIOUS SHEET 2 NOW SHEET 3.	C.C.	SEPT'23	B.V.	B.C.
12	AMEND DRAWING TITLE	C.C.	MAR'22	B.V.	B.C.
11	ADDED GBS BYPASS OPTION. REMOVED ITEM 14. ADDED NOTE 10.	H.E.	APR'20	B.V.	H.E.
10	VT DROPPER CONNECTION UPDATED	CWM	APR'20	B.C.	B.C.
9	NOTE 9 ADDED	H.E.	APR'20	B.C.	H.E.
8	TITLE UPDATED	K.T.	JAN'19	C.C.	C.C.
7	TITLEBLOCK & DRAWING NUMBER FORMATTED	K.T.	APR'16	IB.	B.C.
6	NOTE 8 ADDED, POLE FOUNDATION REMOVE	A.T.	MAR'15	IB.	B.C.
NO	DESCRIPTION	DRN	DATE	CKD	APPD
AMENDMENTS					



NORTHERN TERRITORY

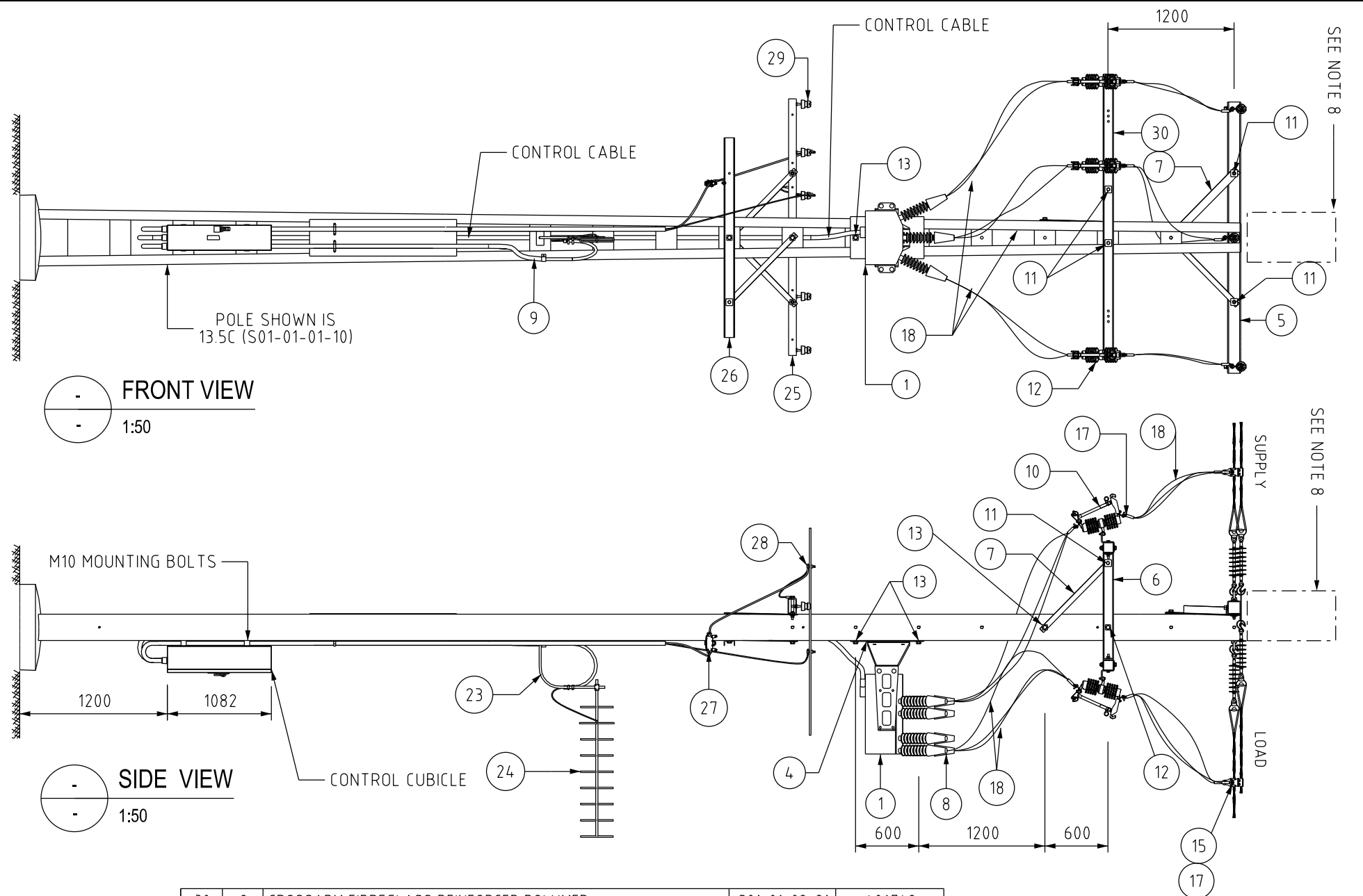
DES	C.CAMILLERI	POWER STANDARD DRAWING			
DRN	A.SCHMID	ASSEMBLIES, RECLOSER SWITCHGEAR			
CKD	C.CAMILLERI	NOJA UNIVERSAL POLE CONSTRUCTION			
APPD	C.CAMILLERI	LV SUPPLY FROM OVERHEAD			
SCALE	AS SHOWN	SHEET 1 OF 3			
ISSUED	JUNE'2006	A3	DRAWING NUMBER	S01-02-07-12__1	
ALL DIM. IN mm					
DRAFTING STANDARD TO A.S.1100		CAD PRODUCT - DO NOT AMEND MANUALLY			AMD T

ISOMETRIC VIEW


N.T.S.

## NOTES

1. REFER TO S01-02-03-25 FOR RECLOSER EARTHING ARRANGEMENT.
2. FOR UNDERGROUND EARTHING ARRANGEMENT REFER TO EITHER S01-02-03-11, S01-02-03-12 OR S01-02-03-13.
3. LV POWER SUPPLY SHALL BE PROTECTED VIA 10A FUSE INSTALLED IN A SERVICE FUSE BASE. A LV SURGE ARRESTOR SHALL BE INSTALLED BETWEEN THE CONTROL BOX SIDE OF THE FUSE AND EARTH.
4. POWER SUPPLY CONDUIT TO BE SADDLE CLAMPED TO THE POLE EVERY 1000mm. ANY OPEN CONDUIT ENDS SHALL BE POINTING TOWARDS THE GROUND.
5. REFER TO S01-02-07-16 FOR COMMUNICATIONS INSTALLATION REQUIREMENTS.
6. REFER TO S01-04-04-01 ON PROCEDURE "LINE/SERVICE POLE INSTALLATIONS CIVIL WORKS" FOR THE REQUIREMENT & INSTALLATION OF POLE CONCRETE FOUNDATIONS.
7. FOR CONTROL CUBICLE REPLACEMENT REFER TO S01-01-06-20
8. TOP MOUNT GBS TO BE INSTALLED AS A BYPASS SWITCH ON SPUR LINE. IF INSTALLATION IS IN MESHED NETWORK WITH BACK FEED AVAILABLE TO ENERGISE EITHER SIDE OF RESLOER, BYPASS GBS IS NOT REQUIRED. FOR TOP MOUNT GBS INSTALLATION DETAILS REFER TO S01-02-07-11.



					30	2	CROSSARM FIBREGLASS REINFORCED POLYMER	S01-01-02-21	406748
15	6	DISCONNECT TEE	S01-01-04-10	2295	29	5	LV PIN INSULATORS	S01-01-03-01	3277
13	2	M24 BOLT, 50 LONG, 2 x LARGE FLAT WASHER, SPRING WASHER & NUT	S01-01-04-43	114629,298828,114330	28	2	SERVICE CLAMP	S01-01-04-48	502127
12	2	M24 BOLT, 180 LONG, 2 x LARGE FLAT WASHER, SPRING WASHER & NUT	S01-01-04-43	400802,113993,114330	27	1	SERVICE FUSE WITH FUSE HOLDER	S01-01-04-49	-
11	7	M16 BOLT, 160 LONG, 2 x LARGE FLAT WASHER, SPRING WASHER & NUT	S01-01-04-43	400805,113985,114322	26	1	LV-SERVICE CROSSARM	S01-01-02-11	298554
10	11	22kV ISOLATING SWITCH	S01-01-06-07	2204	25	1	LV-TRMINATION, 5 WIRE	S01-01-02-20	504194
9	AR	20mm DIAMETER ANACONDA CONDUIT	-	415546	24	1	COMMUNICATIONS ANTENNA	S01-02-07-16	-
8	6	22kV SURGE DIVERTER WITH BIRD CAP (SUPLIED WITH RECLOSER)	S01-01-04-19	249433	23	1	ANTENA MOUNTING BRACKET	S01-02-07-16	-
7	3	CROSSARM BRACE	S01-02-01-49	298687	22	AR	LOCK NUTS FOR ANACONDA CONDUIT	-	415549
6	1	HV LINK X-ARM BRACKET	S01-01-02-23	505048	21	AR	CABLE GLAND FOR ANACONDA CONDUIT	-	415547
5	1	HV LINE TERMINATION CROSSARM 125X125	S01-01-02-10	414398	20	AR	EARTH TAG FOR ANACONDA CONDUIT	-	415548
4	2	MOUNTING BRACKET FOR EXTERNAL VOLTAGE TRANSFORMER / RECLOSER	S01-01-09-05	406941	18	AR	CABLE Cu 1-CORE 150 SQMM FLEXIBLE	S02-01-01-34	300368
1	1	NOJA OSM27 RECLOSER	-	501806	17	24	LUG 150 SQMM Cu COMPRESSION BELL MOUTH	S02-01-02-11	402692
ITEM	QTY	DESCRIPTION	DRAWING No.	ITEM NUMBER	ITEM	QTY	DESCRIPTION	DRAWING No.	ITEM NUMBER
		MATERIAL SCHEDULE			MATERIAL SCHEDULE				

	1 0	AMEND ITEM 6 ITEM NUMBER & AMEND DRAWING TITLE ADDED NEW SHEET 2 OLD SHEET NOW SHEET 3	P.G C.C.	OCT'23 SEPT'23	B.C. B.V.	B.V. B.C.	<div> N O R T H E R N   T E R R I T O R Y</div>	DES	C.CAMILLERI	POWER STANDARD DRAWING			
			DRN	A.SCHMID	ASSEMBLIES, RECLOSER SWITCHGEAR NOJA UNIVERSAL POLE CONSTRUCTION LV SUPPLY FROM VT SHEET 2 OF 3								
	CKD	C.CAMILLERI											
	APPD	C.CAMILLERI											
	SCALE	AS SHOWN											
	ISSUED	JUNE'2006	A3	DRAWING NUMBER	S01-02-07-12__2	<div><div>1</div></div>							
	ALL DIM. IN mm												
DRAFTING STANDARD TO A.S.1100				CAD PRODUCT - DO NOT AMEND MANUALLY		AMD T							
NO	DESCRIPTION		DRN	DATE	CKD	APPD							
AMENDMENTS													

