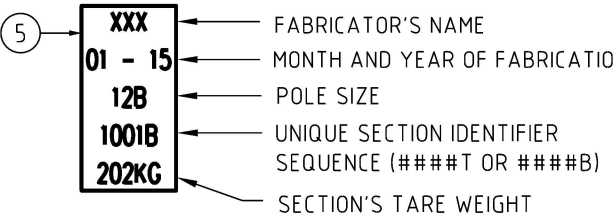


SIDE VIEW
SCALE 1:30



ITEM 5: POLE DATA NAMEPLATE (EXAMPLE)
NTS

NOTES

1. CENTRE OF GRAVITY / LIFTING POINT SHALL BE MARKED ON EACH SECTION
2. TWO PIECE SPLICED POLE IS NOT THE PREFERRED OPTION FOR GREENFIELD SITES
4. REFER TO S01-02-01-69 FOR INSTALLATION DETAILS
5. APPLICATION OF THIS POLE IS RESTRICTED FOR INTERNAL POWER NETWORKS USE ONLY. FOR OTHER APPLICATIONS AND APPROVALS, CONTACT POWER NETWORKS STANDARDS
6. POLES TO COMPLY WITH PWC DOCUMENT STSP 01-002
7. ALL WELDS TO BE 6MM FILLET CONTINUOUS WELD UNO EXCEPT ANTICLIMB PLATE WHICH IS TO HAVE 6mm FILLET 150mm LONG AT BOTH ENDS AND CENTRE
8. FOR SPLICE DETAILS REFER TO DRG S01-01-01-40



TWO PIECE SPLICED POLE 12.0B - ITEM NUMBER : 503620

TOTAL MASS 12.0B - TOP - 434Kg
TOTAL MASS 12.0B - BOTTOM - 202Kg

TWO PIECE SPLICED POLE 12.0C - ITEM NUMBER : 503628

TOTAL MASS 12.0C - TOP - 544Kg
TOTAL MASS 12.0C - BOTTOM - 254Kg

ITEM	QTY. 12.0B	QTY. 12.0C	MATERIAL DESCRIPTION
1	2	-	609 x 150 x 25 FMS. FLANGE PLT. 26 DIA HOLES, REFER DRG S01-01-01-40
2	-	2	609 x 200 x 25 FMS. FLANGE PLT. 26 DIA HOLES, REFER DRG S01-01-01-40
3	4	-	128 x 200 x 8 FMS. STIFFENER PLT., REFER DRG S01-01-01-40
4	2	4	174 x 200 x 8 FMS. STIFFENER PLT., REFER DRG S01-01-01-40
5	2	2	POLE DATA NAME PLATE
6	-	-	REFER DRG S01-01-01-09 FOR ALL OTHER POLE MATERIALS

							POWER STANDARD DRAWING						
							DES	J.NOYNAY	TWO PIECE SPLICED POLE LINE 12.0B AND 12.0C BOLTED CONNECTIONS TYPE				
							DRN	A.TAYLOR					
							CKD	I.BASHIR					
							APPD	-					
							SCALE	AS NOTED	A3		DRAWING NUMBER	S01-01-01-33	
							ISSUED	FEB'16					
							ALL DIM. IN mm						
							DRAFTING STANDARD TO A.S.1100		CAD PRODUCT - DO NOT AMEND MANUALLY		AMDT		

2	AMENDED WEB CORNERS FOR HDG. AMENDED IMAGERY. NOTE 3 REMOVED, ADDED NOTES 6, 7, & 8, ADDED ITEM 6. POLE DATA NAMEPLATE AMENDED.	P.G.	MAR'23	B.V.	B.C.
1	TITLEBLOCK & DRAWING NUMBERS FORMATTED	K.T.	DEC'18	C.C.	C.C.
0	ISSUED FOR CONSTRUCTION	J.NOY	FEB'16	A.T.	I.B.
NO	DESCRIPTION	DRN	DATE	CKD	APPD
AMENDMENTS					