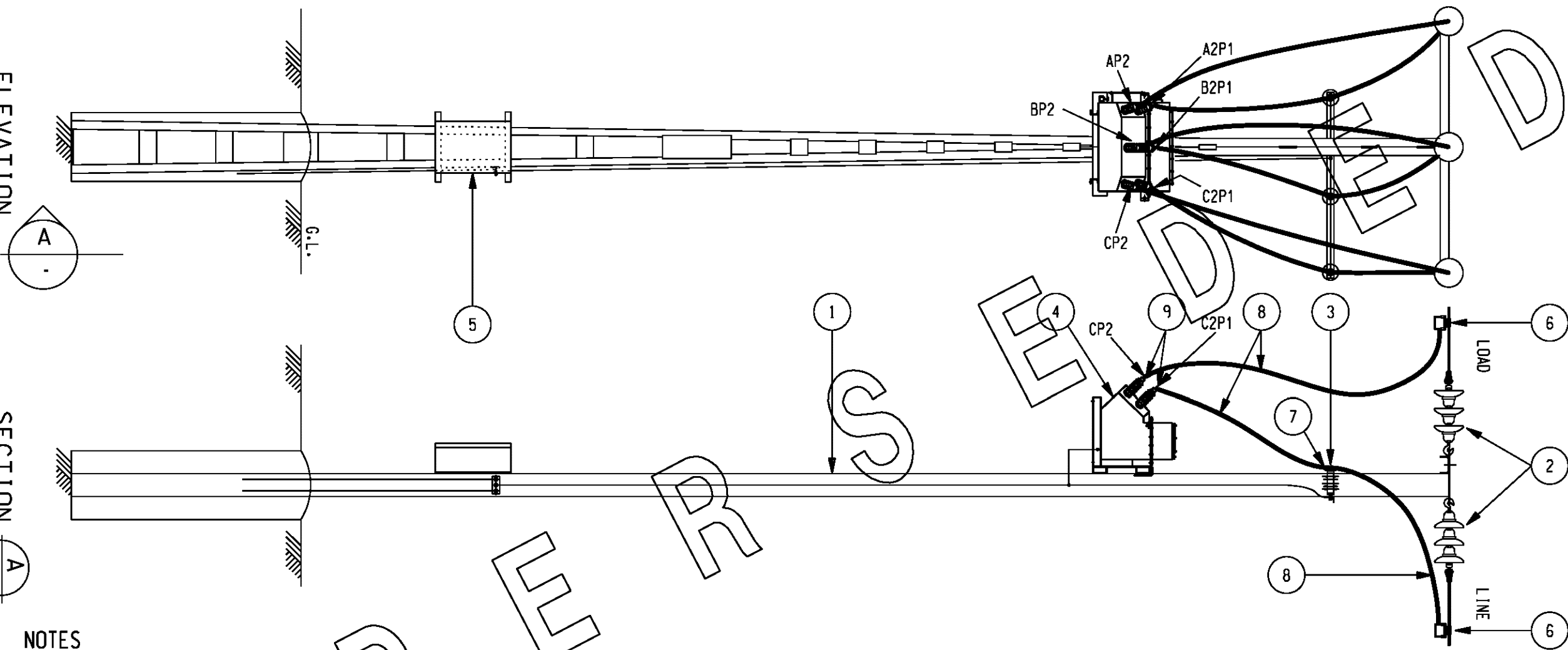


ELEVATION
Scale 1:40

SECTION
Scale 1:40



NOTES

1. CONNECTION TYPE 'CSP' TO BE USED FOR CURRENTS UP TO 200A. FOR CURRENTS ABOVE 200A USE CONNECTION TYPE 'CDC' (REFER DRG. S01-02-01-01).
2. a) CABLES SHOWN ON DRG. No. S02-01-01-33 CAN BE USED FOR 22 kV APPLICATIONS.
b) USE TWO DROPPER CABLES IN PARALLEL WHERE CURRENT RATING OF THE UNDERGROUND CABLE EXCEEDS THE CURRENT RATINGS SHOWN ON DWG. NO. S02-01-01-33.
3. TYPES OF SURGE DIVERTER IN USE :
- PORCELAIN A.B.B. & BOWTHORPE (DWG S01-01-04-32).
- RAYCHEM (DWG S01-01-04-19) & POLYMER HOUSED BOWTHORPE (DWG S01-01-04-33).
RAYCHEM & BOWTHORPE POLYMER HOUSED SURGE DIVERTERS REPLACE SUPERSEDED PORCELAIN SURGE DIVERTERS.
4. WHERE POLYMER HOUSED SURGE DIVERTER REPLACES PORCELAIN TYPE, ARRANGEMENT SHOWN ON DWG S01-01-04-33 DETAIL A SHOULD BE USED.

9	6	LUG (TO SUIT CABLE TAG No 8)	-	-
8	AR	CABLE - SINGLE CORE LV XLPE (REFER NOTE 2)	-	S02-01-01-33
7	3	LUG (REFER NOTE 4)	-	-
6	6	TERMINATION (REFER NOTE 1)	-	S01-02-01-01
5	1	METER BOX - B & R TYPE 'IP'	-	-
4	1	METERING UNIT - HV	-	S01-02-08-03
3	3	SURGE DIVERTER - HV METAL OXIDE (REF NOTE 3)	-	-
2	1	POLE TOP UNIT - TYPE 'C'	-	S01-02-02-02
1	1	POLE STRUCTURE	-	S01-02-05-09
TAG No	QTY.	DESCRIPTION	S / C	DRG REF

MATERIAL SCHEDULE

DES	-	POWER STANDARD DRAWING	
DRN	gmck	POLE TOP METERING UNIT	
CKD	N.Stubbs	11 / 22 kV - DUAL RATIO	
APPD	B.T.Kent	GENERAL ARRANGEMENT	
SCALE	as shown	A3	DRAWING NUMBER S01-02-08-02
ISSUED	OCT'92		
ALL DIM.	IN mm	DRAFTING STANDARD TO A.S.1100	
		CAD PRODUCT - DO NOT AMEND MANUALLY	

NO	DESCRIPTION	DRN	DATE	CKD	APPD
6	SUPERSEDED	A.T.	DEC'12	B.C.	B.C.
5	AMENDED DROPPER CABLE	K.I.	MAY'06	PWC	B.C.
4	NOTES 3 & 4 ADDED. MATERIALS LIST EDITED. REDRAW METERING UNIT. SECONDARY TERMINAL BOX MOVED TO OTHER SIDE OF METERING UNIT.	J.A.L.	JAN'97	S.C.M.F.R.R.	
3	REDRAWN. ARRANGEMENT MODIFIED TO SUIT METAL OXIDE SURGE DIVERTERS.	gmck	OCT'92	N.S.	B.T.K
AMENDMENTS					

PowerWater
NORTHERN TERRITORY

