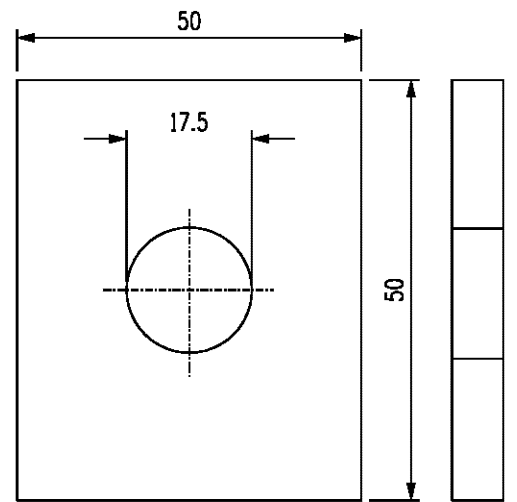


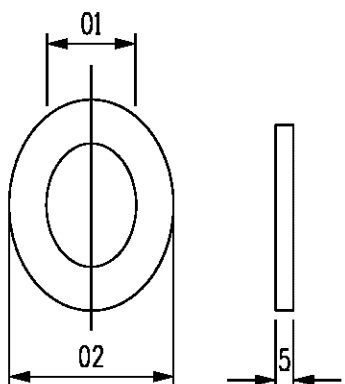
BOLT DIMENSIONS				
ITEM	STOCK CODE	Ø D	L	T
1	114199	10	130	32
2	114207	16	150	
3	114546		140	
4	114553		160	44
5	114561		180	
6	114579	240	57	



GALV. WASHERS-SQUARE  
ITEM 10 STOCK CODE 114348

NOTES - DIMENSIONS

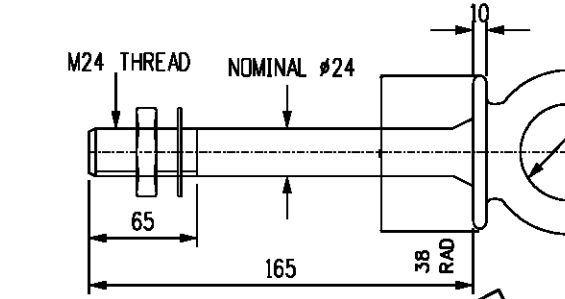
- UNLESS SPECIFIED OTHERWISE DIMENSIONS ARE TO BE IN ACCORDANCE WITH THE FOLLOWING STANDARDS-
  - A.S. 1111 ISOMETRIC HEXAGON COMMERCIAL BOLTS & SCREWS
  - A.S. 1112 ISOMETRIC HEXAGON NUTS ( DOUBLE CHAMFERED )
  - A.S. 1237 FLAT METRIC WASHERS ( ARGF SERIES TABLE 4.2)
  - A.S. 1969 HELICAL SPRING LOCK WASHERS
- EACH BOLT EYEBOLT IS TO BE SUPPLIED COMPLETE WITH A NUT, FLAT WASHER AND HELICAL SPRING WASHER
- MATERIALS
  - BOLTS - STEEL GRADE 4.6 TO A.S. 1111
  - NUTS - STEEL GRADE 5 TO A.S. 1112
  - WASHERS - MILD STEEL TO A.S.1237
  - EYE BOLTS - TO BE FORGED FROM HOT ROLLED ARBON STEEL TO A.S.1442/CS1030 GRADE OR EQUIVALENT THREAD FORM ISOMETRIC COURSE PITCH SERIES 8g TO A.S. 1275



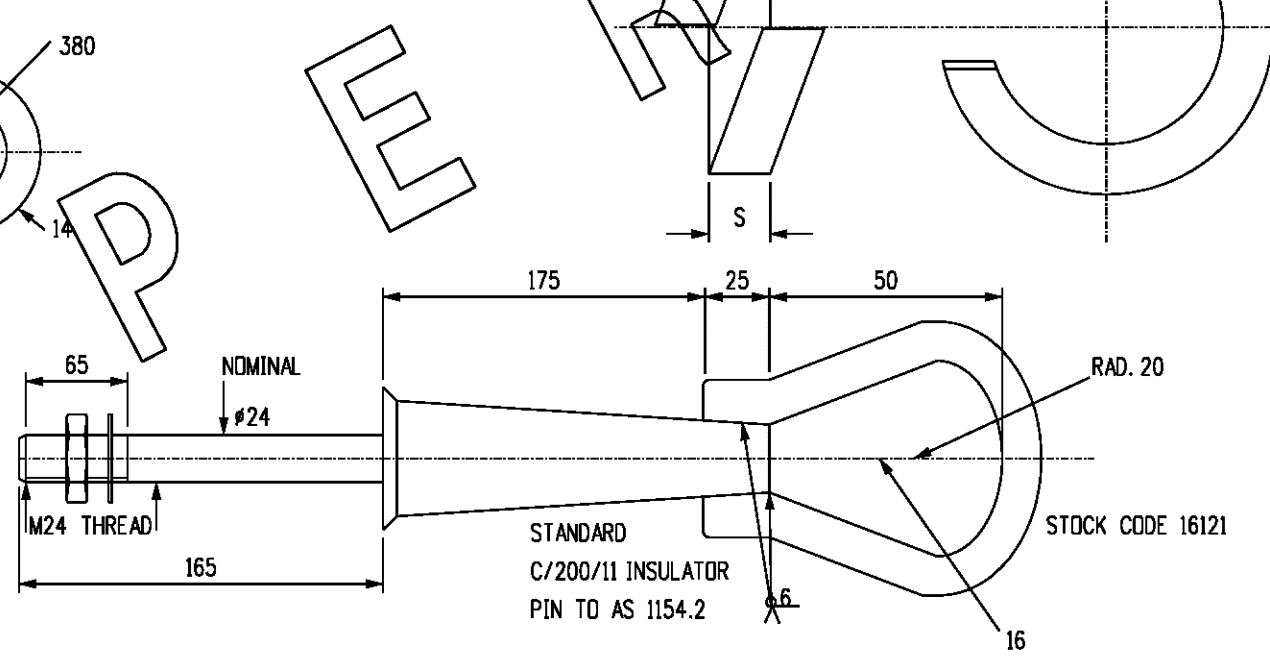
GALV. ISO METRIC HEXAGON BOLTS & NUTS

ITEM	STOCK CODE	WASHER DIMENSIONS					
		NOMINAL SIZE OF WASHER	INSIDE Ø		OUTSIDE Ø		THICKNESS
			Ø1	Ø2	Ø1	Ø2	
7	113977	10	11.5	11.0	30	28.7	2.5
8	113985	16	18.5	18.0	50	48.4	4
9	113993	24	26.6	26.0	72	70.1	6

GALV. WASHERS-EXTRA LARGE SERIES



ITEM 11 EYE BOLTS-FORGED C/W GALV. NUT & WASHER  
STOCK CODE 1615°



ITEM 12-EXTENSION EYE BOLT C/W GAL.NUT & WASHER

- GALVANISING  
BOLTS, NUTS, EYEBOLTS & WASHERS TO BE HOT DIP GALVANISED THE MASS & QUALITY OF THE COATING AND THREAD TOLERANCES TO BE IN ACCORDANCE WITH A.S. 1214

- MINIMUM FAILING LOADS
  - THE MINIMUM TENSILE FAILING LOAD OF BOLTS, EYEBOLTS TO BE  
M10-23.2KN : M16-62.8KN : M24-141KN
  - THE MINIMUM PROOF FAILING LOAD OF NUTS TO BE  
M10-29.0KN : M16-78.5KN : M24-177KN

- TOLERANCE  
UNLESS SPECIFIED OTHERWISE, TOLERANCES SHALL BE AS FOLLOWS-  
DIMENSIONS UP TO AND INCLUDING 40.0mm - ±1mm  
DIMENSIONS IN EXCESS OF 40.0mm - ±3%

ITEM	STOCK CODE	NOM SIZE	Ø1		Ø2	S	
			MAX	MIN	MAX	MAX	MIN
13	114314	10	10.7	10.2	18.1	2.35	2.05
14	114322	16	17.0	16.2	27.4	3.7	3.3
15	114330	24	25.5	24.5	40	5.2	4.8

8	REDAWN IN CAD, SUPERSEDED BY S01-01-04-15	C.C.	OCT'10	A.T.	S.C.
NO	DESCRIPTION	DRN	DATE	CKD	APPD
AMENDMENTS					



DES	A.TALYOR	POWER STANDARD DRAWING			
DRN	C.COPPINS	LINE HARDWARE			
CKD	A.TALYOR	TIMBER CROSSARM ACCESSORIES			
APPD	A.TALYOR	BOLTS, EYEBOLTS			
SCALE	N.T.S.	NUTS & WASHERS			
ISSUED	OCT'10	A3	DRAWING NUMBER	S01-01-04-15	
ALL DIM. IN	mm			CAD PRODUCT - DO NOT AMEND MANUALLY	
DRAFTING STANDARD TO A.S.1100				AMDT	