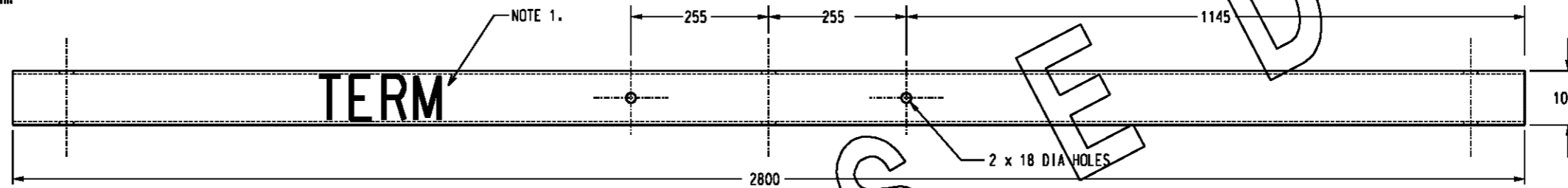
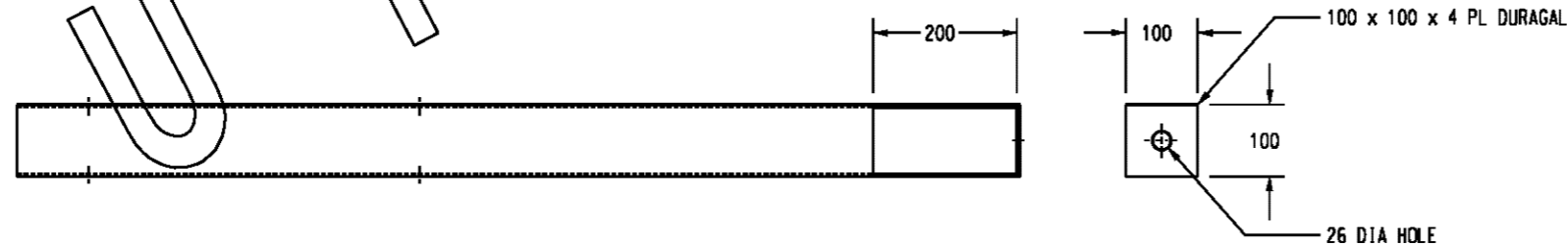
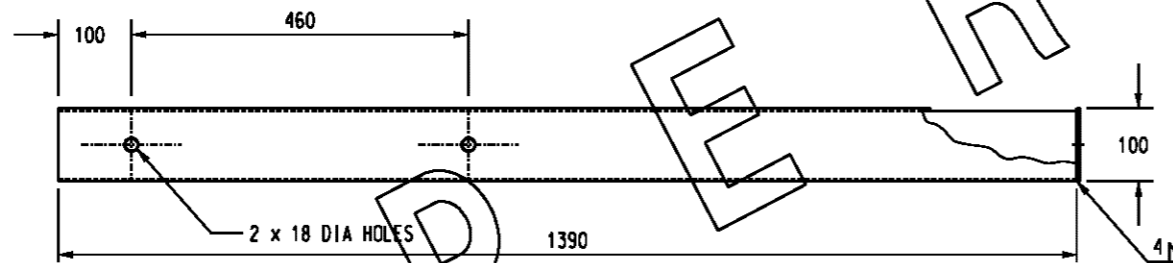


NOTE 1:  
 "TERM" TO BE SPRAY PAINTED ON TO CROSSARM.  
 MINIMUM HEIGHT OF LETTERING = 80mm.



ITEM 1: CROSSARM - STEEL REPLACEMENT FOR "TYPE X" STOCK CODE 400796

MATERIAL : 100 x 100 x 6 DURAGAL SHS



ITEM 2: CROSSARM - STEEL REPLACEMENT FOR DELTA CENTRE PHASE STOCK CODE 400798

MATERIAL : 100 x 100 x 4 DURAGAL SHS

| NO         | DESCRIPTION                              | DRN  | DATE     | CKD  | APPD |
|------------|--|------|----------|------|------|
| 2          | ITEM 1 SUPERSEDED BY S01-01-02-21        | K.I. | 13.09.06 | R.S. | S.C. |
| 1          | STOCK CODE CHANGED FROM 400797 TO 400796 | A.S. | 25.11.03 | R.C. | M.B. |
| 0          | ISSUED FOR CONSTRUCTION                  | A.S. | 9.9.02   | M.B. | M.B. |
| AMENDMENTS |  |      |          |      |      |



|          |           |   |                             |
|----------|-----------|---|-----------------------------|
| DES      | M. BOCK   | POWER STANDARD DRAWING  |                             |
| DRN      | A. SCHMID | CROSSARMS   |                             |
| CKD      | -         | STEEL REPLACEMENT FOR TIMBER CROSSARM                             |                             |
| APPD     | M. BOCK   | TYPE "X" AND DELTA CENTRE PHASE                                   |                             |
| SCALE    | 1:10      | A3  | DRAWING NUMBER S01-01-02-14 |
| ISSUED   | JULY'02   |   |                             |
| ALL DIM. | IN mm     | DRAFTING STANDARD TO A.S.1100 CAD PRODUCT - DO NOT AMEND MANUALLY |                             |

