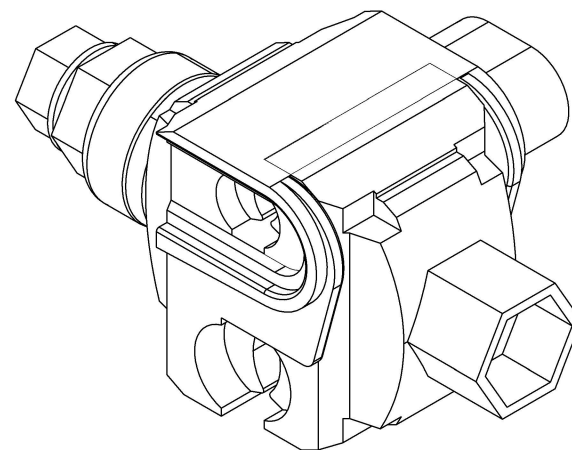


#### ITEM 1 - CONNECTOR PIERCING 16-95/1.5-10

ITEM NUMBER: 198382

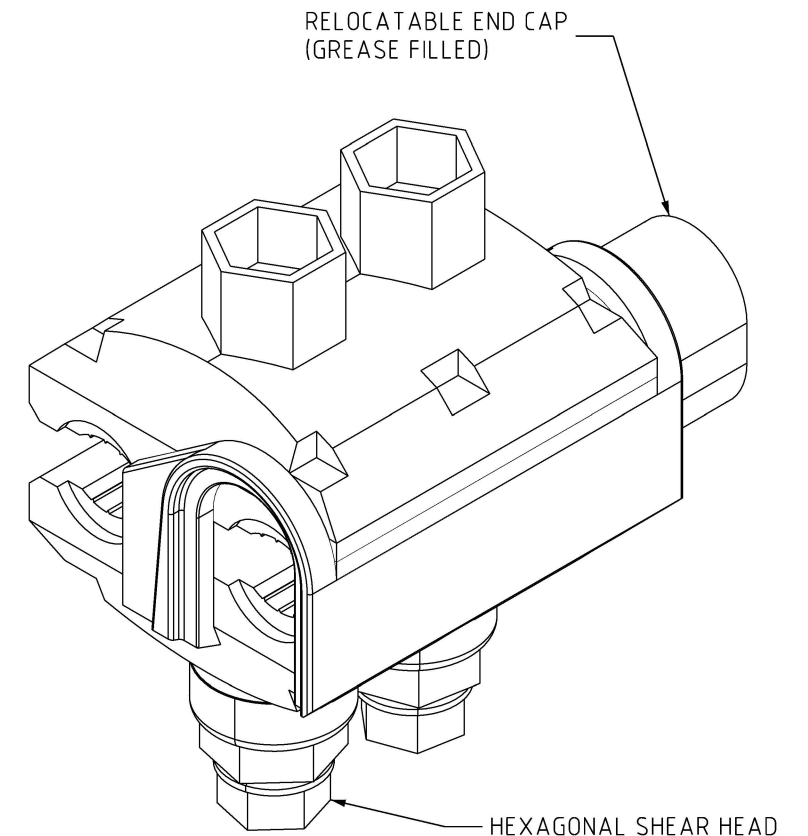
SUITABLE FOR CABLES - 16 to 95 sq.mm MAIN  
- 1.5 to 10 sq.mm TAP



#### ITEM 2 - CONNECTOR PIERCING 16-150/6-35

ITEM NUMBER: 415586

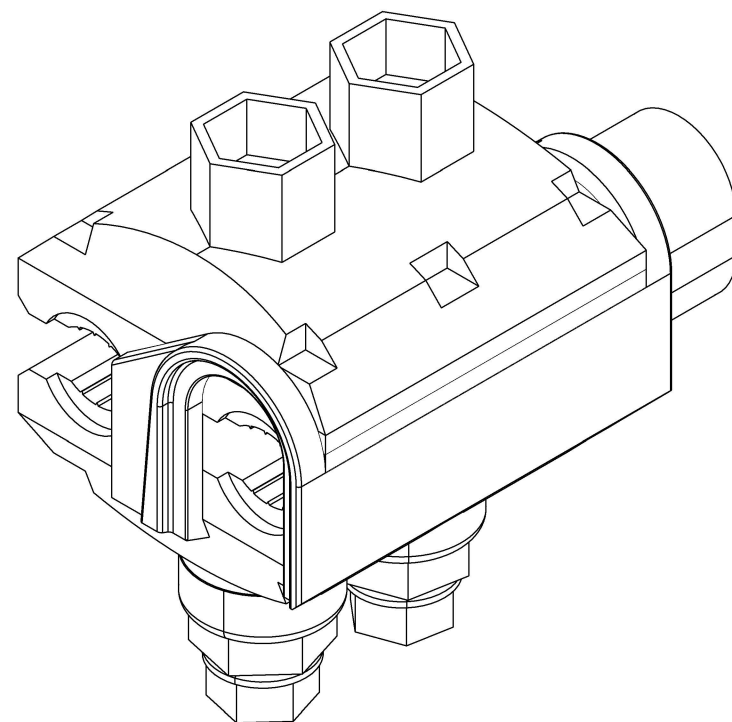
SUITABLE FOR CABLES - 16 to 150 sq.mm MAIN  
- 6 to 35 sq.mm TAP



#### ITEM 3 - CONNECTOR PIERCING 50-185/50-150

ITEM NUMBER: 415587

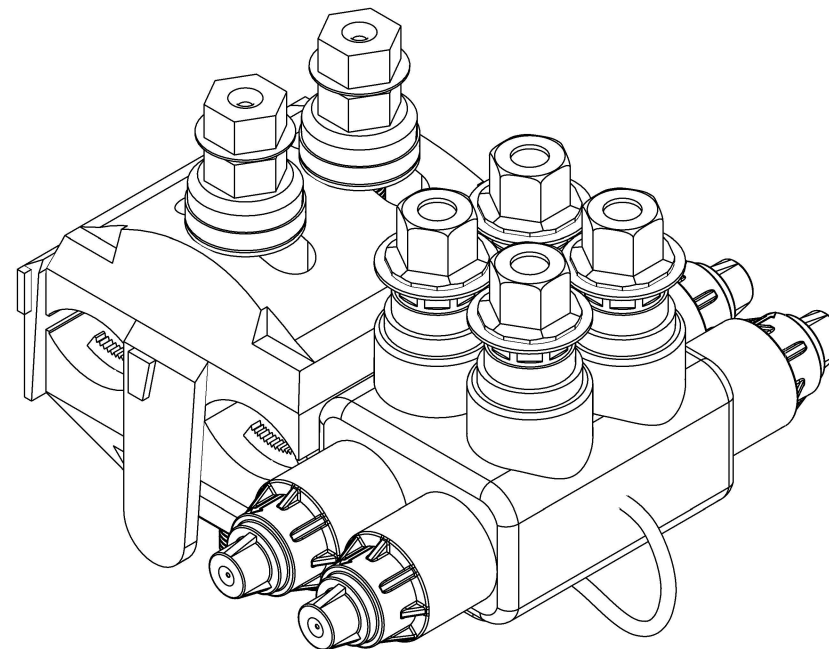
SUITABLE FOR CABLES - 50 to 185 sq.mm MAIN  
- 50 to 150 sq.mm TAP



#### ITEM 4 - CONNECTOR PIERCING 95-240/95-150 ABC

ITEM NUMBER: 415588

SUITABLE FOR CABLES - 95 to 240 sq.mm BARE ALUMINIUM MAIN  
- 95 to 150 sq.mm INSULATED TAP



#### ITEM 5 - CONNECTOR PIERCING LV ABC 25-95/4 x 6 TO 35

ITEM NUMBER: 504616 NEUTRAL

504617 RED

504618 WHITE

504619 BLUE

SUITABLE FOR CABLES - 25 to 95 sq.mm MAIN  
- 4 x 6 to 35 sq.mm TAP


#### NOTES:

- CONNECTORS ARE TO BE SUPPLIED WITH A GREASE FILLED END CAP TO SEAL THE END OF THE TAP CONDUCTOR.
- ALL BOLTS TO BE SUPPLIED WITH HEXAGONAL SHEAR HEADS. SHEAR HEADS SHALL HAVE EITHER SHEAR OFF INDICATOR TAGS OR STAGGERED HEADS E.G. 13mm AND 17mm A/F.
- THE INTEGRITY OF THE SYSTEM INSULATION MUST BE MAINTAINED DURING AND AFTER INSTALLATION.
- ALL INSULATION PIERCING CONNECTORS SHALL COMPLY WITH AS 4396.
- CONNECTORS NOT TO BE USED ON MULTI STRANDED FLEXIBLE CABLE OR NEUTRAL SCREENED CABLE.

7	ADDED NOTE 5.	P.BH.	JUL'23	P.BH.	B.C.
6	REDRAWN ITEM 1-4, CORRECTED CABLE RANGES ITEM 1-3, UPDATED ITEM TITLES.	P.BH.	AUG'22	B.V.	B.C.
5	INCLUDE ITEM 5.	C.C.	MAY'20	B.C.	B.V.
4	TITLEBLOCK & DRAWING NUMBER FORMATTED.	K.T.	JAN'20	C.C.	C.C.
3	RESIZED FOR 150SQMM ABC	K.T.	MAR'12	B.C.	S.C.
2	NOTE 4 ADDED REDRAWN IN 3D.	J.C.	MAR'09	A.T.	S.C.

NO	DESCRIPTION	DRN	DATE	CKD	APPD
AMENDMENTS					

**PowerWater**  
NORTHERN TERRITORY

DES H.T.		POWER STANDARD DRAWING		
DRN J.C.	LINE HARDWARE LV - ABC CONNECTORS PIERCING			
CKD G.S.				
APPD B.KENT				
SCALE N.T.S.				
ISSUED -	A3	DRAWING NUMBER	S04-01-02-15	
ALL DIM. IN mm				
DRAFTING STANDARD TO A.S.1100		CAD PRODUCT - DO NOT AMEND MANUALLY		AMD T