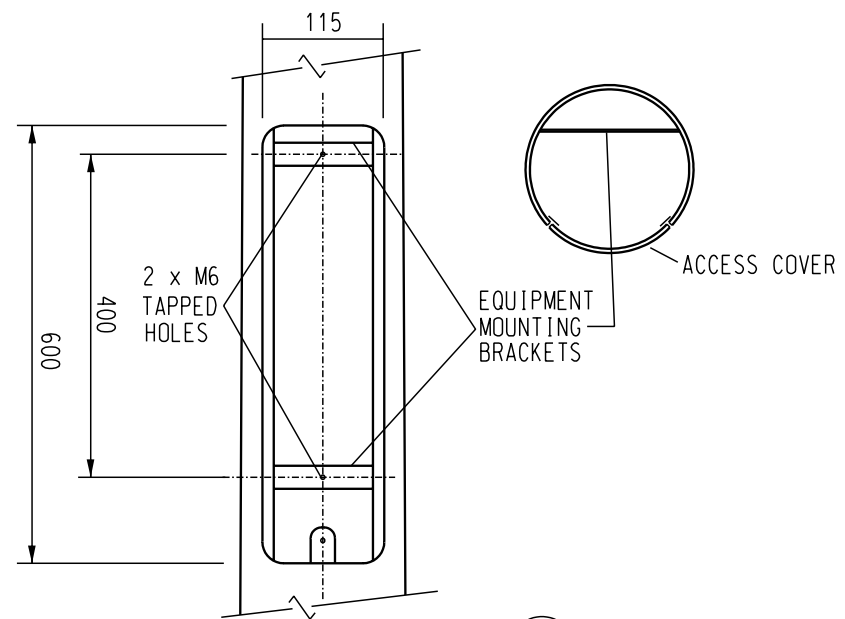


BASE PLATE DETAIL SECTION 1

Scale 1:10



EQUIPMENT ACCESS - DETAIL

Scale 1:10
(COVER REMOVED FOR CLARITY)

NOTES :

1. ALL WELDING AND WELD PREPARATION TO BE IN ACCORDANCE WITH AS1554.
2. CIRCUMFERENTIAL WELDS TO BE JOGGLED BUTT TYPE. LONGITUDINAL WELDS TO BE SINGLE BUTT TYPE. ALL WELDS TO BE MADE BY CONTINUOUS AUTOMATIC PROCESS AND ARE NOT TO BE DRESSED SMOOTH.
3. AFTER FABRICATION ALL COMPONENTS TO BE ACID DE-SCALED AND HOT DIPPED GALVANIZED MINIMUM 450 g/sq.m TO AS4680.
4. WIND LOADINGS TO COMPLY WITH THE REQUIREMENTS OF AS1170.2 - SECTION 4 DESIGNS ARE TO BE BASED ON -
 - MAXIMUM WIND SPEED OF $V_u = 66$ m/sec DERIVED FROM A DESIGN LIFE OF 25 YEARS WITH A 5% PROBABILITY FACTOR OF V_u BEING EXCEEDED IN THAT PERIOD
 - MAXIMUM WIND SPEED OF $V_s = 47$ m/sec DERIVED FROM A DESIGN LIFE OF 25 YEARS WITH A 63% PROBABILITY FACTOR OF V_s BEING EXCEEDED IN THAT PERIOD WITH A MAXIMUM DEFLECTION LIMIT OF 4% OF NOMINAL LENGTH
 - REGION 'C' AND TERRAIN CATEGORY '3'
 - 4.5 m OUTREACH ARMS AS SHOWN ON DRAWING S03-01-01-10
 - LUMINAIRES WITH A WIND AREA OF 0.13 sq.m, A MASS OF 12 kg EACH AND A DRAG CO-EFFICIENT OF 0.5
5. COLUMNS ARE TO CONFORM TO THE REQUIREMENTS OF AS4100 AND AS1798.
6. COLUMNS ARE TO HAVE CONTINUOUS TAPER OVER THEIR ENTIRE LENGTH AND A STEEL THICKNESS OF NOT LESS THAN 3 mm.
7. TWO (OR MORE) PIECE COLUMNS MUST BE ASSEMBLED PRIOR TO DELIVERY.
8. ACCESS DOORS ARE NOT INTERCHANGEABLE. ENSURE THAT INDIVIDUAL COLUMNS AND DOORS ARE SUITABLY MATCHED AND MARKED.
9. EQUIPMENT ACCESS DOOR TO BE PROVIDED (DETAIL C) HAVING 'TAMPER PROOF' LOCKING DEVICE. DOOR ACCESS SCREW TO BE M10 STAINLESS STEEL I.S.O. METRIC BUTTON HEAD SOCKET TYPE.
10. ALL COLUMNS TO BE MANUFACTURED TO ACCEPT THE MOUNTING OF OUTREACHES AS SHOWN ON DRAWING S03-01-01-13.

REFERENCE DRAWINGS :

- S03-01-01-12 : SLIP BASE 12.0 m COLUMN OUTREACH TYPE.
- S03-01-02-02 : RAG BOLT REINFORCEMENT, TYPE 12 & 18 FABRICATION DETAILS.
- S03-01-02-04 : RAG BOLT REINFORCEMENT, SLIP BASE, 12.0 m COLUMN FOUNDATION ARRANGEMENT.
- S03-01-02-05 : INSTALLATION DETAILS, MECHANICAL AND ELECTRICAL
- S03-01-06-03 : MISCELLANEOUS SLIP BASE POLE & PIT CONNECTION DETAILS.
- S03-01-05-14 : ELECTRICAL CONNECTION DETAILS, SLIP BASE 12.0 m COLUMN.

						DES	F.ROBSON	POWER STANDARD DRAWING		
						DRN	R. INNES	COLUMN, TAPERED STEEL, 12.0m OUTREACH TYPE		
						CKD	-	SLIP-BASE MOUNTED, SPIGOT TYPE		
						APPD	F.ROBSON	SPECIFICATION AND FABRICATION DETAILS		
						SCALE	AS SHOWN	A3	DRAWING NUMBER	S03-01-01-14
						ISSUED	APR'2001			
						ALL DIM.	IN mm			
						DRAFTING STANDARD TO A.S.1100		CAD PRODUCT - DO NOT AMEND MANUALLY		AMDT

2	TITLEBLOCK & DRAWING NUMBER FORMATTED	K.T.	FEB'19	C.C.	C.C.
1	ITEM 1 CHANGED FROM DOUBLE O/R TO SPIGOT TYPE	C.W.M.	MAY'10	A.T.	S.C.
NO	DESCRIPTION	DRN	DATE	CKD	APPD
AMENDMENTS					

