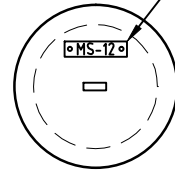
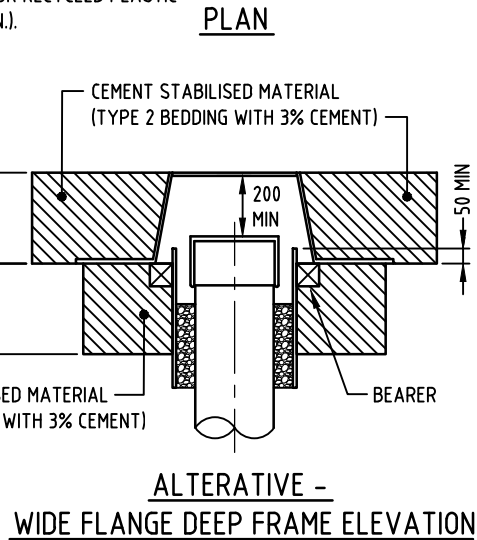
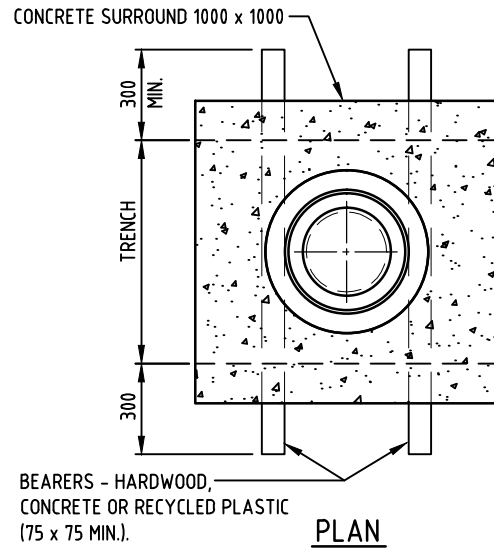


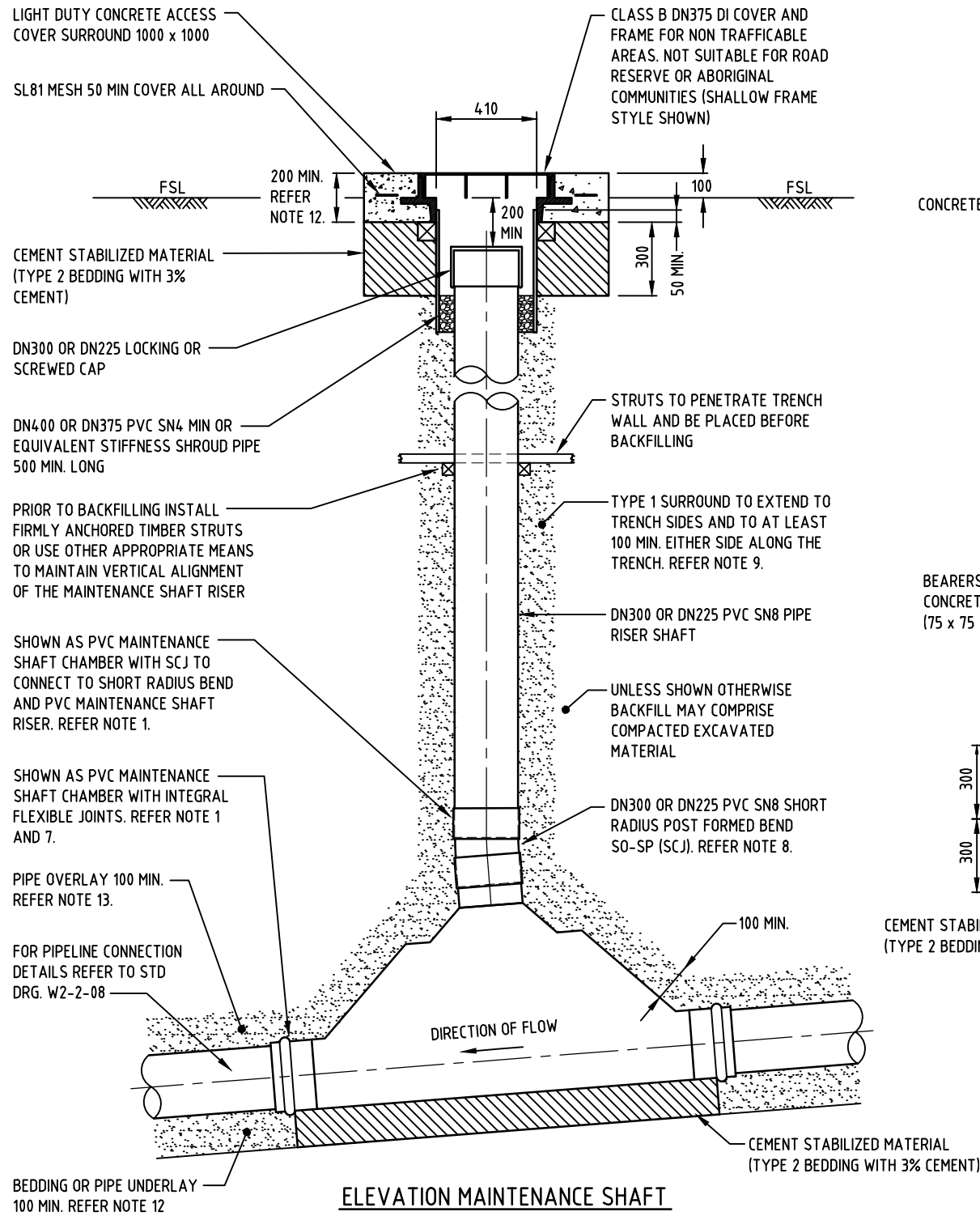
MAINTENANCE SHAFT NUMBER PLATE TO BE ATTACHED TO ACCESS CAP WITH STAINLESS STEEL SCREWS, REFER NOTES 11 AND 15.



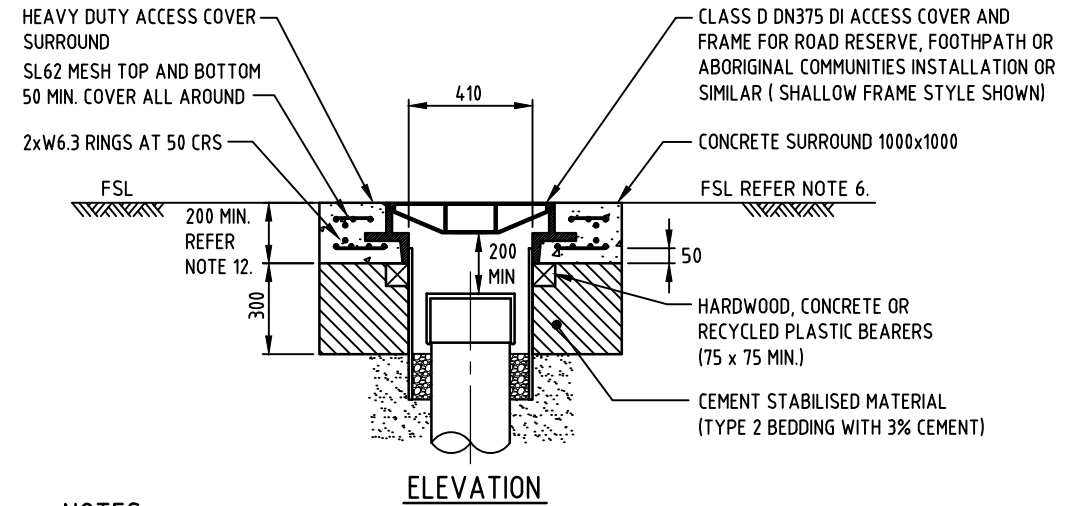
PLAN  
DETAIL OF ACCESS CAP



ALTERNATIVE -  
WIDE FLANGE DEEP FRAME ELEVATION



ELEVATION MAINTENANCE SHAFT  
TYPICAL ARRANGEMENT



ELEVATION

NOTES:

- APPROVED MAINTENANCE SHAFTS MAY BE MANUFACTURED FROM VARIOUS MATERIALS (E.G. PVC, POLYPROPYLENE) AND VARIOUS DESIGNS. AS SUCH JOINTING ARRANGEMENTS MAY VARY FROM THAT SHOWN ON THIS STANDARD DRAWING.
- TYPE AND CLASS OF SEWER PIPES SHALL BE AS SPECIFIED ON THE PROJECT DESIGN PLANS / PROJECT SPECIFICATION.
- FOR ALICE SPRINGS AND DARWIN, MAXIMUM DEPTH TO INVERT OF MAINTENANCE SHAFT SHALL NOT EXCEED MANUFACTURER'S RECOMMENDATION OR 4500mm, WHICHEVER IS THE LESSER FOR OTHER CENTRES, MAXIMUM DEPTH TO INVERT OF MAINTENANCE SHALL NOT EXCEED 3000.
- CONCRETE SHALL BE GRADE N32 (32Mpa. 20 MAX. AGGREGATE) COMPLYING WITH AS1379.
- PVC PIPE INSTALLATION SHALL BE IN ACCORDANCE WITH AS 2032. PIPE INSTALLATION SHALL COMPLY WITH THE PROJECT SPECIFICATION.
- IN NON TRAFFICABLE AREAS IN ABORIGINAL COMMUNITIES, THE FSL IS TO BE 100 BELOW THE TOP OF THE HEAVY DUTY ACCESS COVER SURROUND.
- AT CHANGES OF SEWER GRADE LAY THE MAINTENANCE SHAFT CHAMBER AT THE LESSER OF THE TWO SEWER GRADIENTS, PROVIDED THAT REQUIREMENTS OF NOTE 14 ARE SATISFIED.
- USE A SHORT RADIUS POST FORMED BEND OF APPROPRIATE ANGLE TO ADJUST THE RISER SHAFT TO NOT GREATER THAN 0.5° FROM VERTICAL.
- PLACE TYPE 1 SURROUND ABOUT MAINTENANCE SHAFT RISER IN LIFTS OF THE SAME HEIGHT AS ADJACENT TRENCH BACKFILL AND USE TEMPORARY SHIELDS SPANNING THE TRENCH TO SEPARATE SURROUND AND TRENCH BACKFILL.
- USE ONLY THOSE MANUFACTURER'S PRODUCTS SHOWN APPROVED IN THE WATER AND SEWERAGE INFRASTRUCTURE PRODUCTS MANUAL.
- ENGRAVE MAINTENANCE SHAFT NUMBER ON 150 x 50 PLASTIC EXTERIOR ENGRAVING LAMINATE. LAMINATE TO BE 1.5mm THICK WHITE OVER BLACK. LETTERS TO BE 30mm HIGH. ENGRAVING TO BE 4mm WIDE.
- DEPTH OF CONCRETE FOR SURROUND TO SUIT HEIGHT OF CAST IRON MAINTENANCE SHAFT SURFACE ACCESS COVER AND FRAME.
- PROVIDE PIPELINE UNDERLAY AND OVERLAY IN ACCORDANCE WITH THE PROJECT SPECIFICATION.
- UNLESS OTHERWISE PERMITTED BY MANUFACTURER MINIMUM DROP ACROSS IN-LINE MAINTENANCE SHAFT CHAMBER IS 30mm. FOR ELBOW MAINTENANCE SHAFT CHAMBERS, MINIMUM DROP FROM INLET TO CENTRE OF CHAMBER IS 20mm AND FROM CENTRE OF CHAMBER TO OUTLET IS 20mm. MAXIMUM VERTICAL DEFLECTION AT INLET AND OUTLET IS ONE DEGREE UNLESS OTHERWISE PERMITTED BY MANUFACTURER. NO HORIZONTAL DEFLECTION ALLOWED AT INLET OR OUTLET.
- FOR CAST IN-SITU CONCRETE SURROUNDS, MAINTENANCE SHAFT NUMBER MAY BE ENGRAVED INTO SURROUND, MINIMUM 50mm LETTERING.

5	NOTE 3 CHANGED.	P.W.	FEB' 19	J.R.	D.C.
4	GENERAL AMENDMENTS 2018.	P.W.	SEPT' 18	I.L.	D.C.
3	ADD NOTE 15 AND MINOR CHANGE TO CLASS D COVER ELEVATION.	RGI	MAY' 07	R.J.	J.P.
2	UPDATE MESH DETAILS ON ELEVATION & ALTERNATIVE WIDE FLANGE DEEP FLANGE DETAIL.	AC	NOV' 06	R.J.	J.P.
1	ACCESS COVER SIZE CHANGED, BEARERS ADDED.	AC	AUG' 05	R.J.	J.P.
NO	DESCRIPTION	DRN	DATE	CKD	APPD
AMENDMENTS					



DES	PS / NM	SEWERAGE STANDARD DRAWING			
DRN	AG	SEWER MAINS			
CHK	P.S.	MAINTENANCE SHAFT			
APPD	N.McC	TYPICAL ARRANGEMENT			
SCALE	N.T.S.	A3	DRAWING NUMBER	W2-2-07	5
ISSUED	MAY' 01				
ALL DIM. IN mm		DRAFTING STANDARD TO A.S.1100		CAD PRODUCT - DO NOT AMEND MANUALLY	