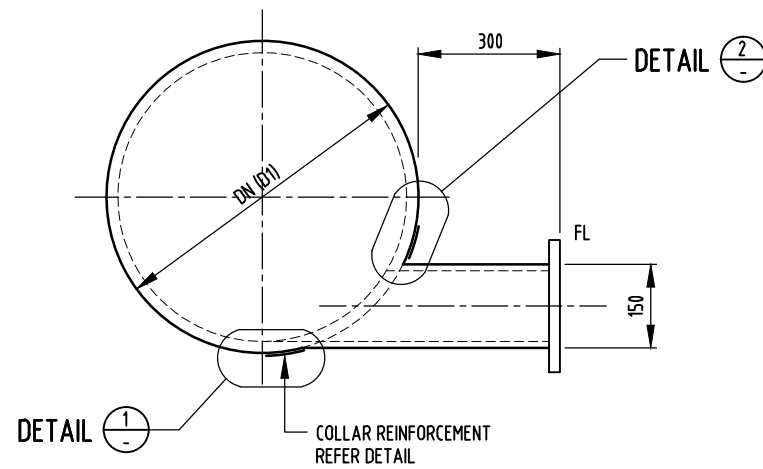
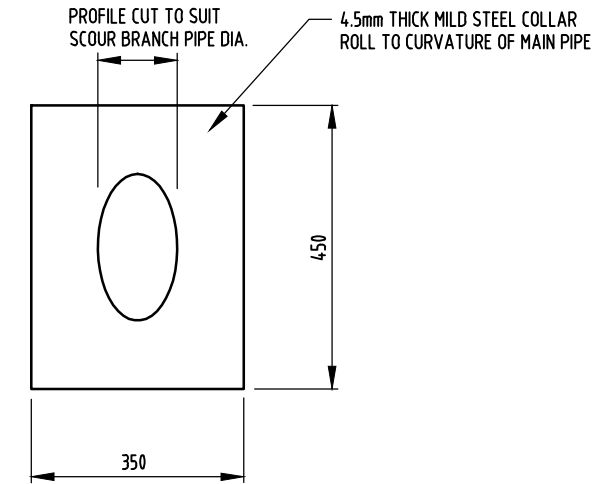


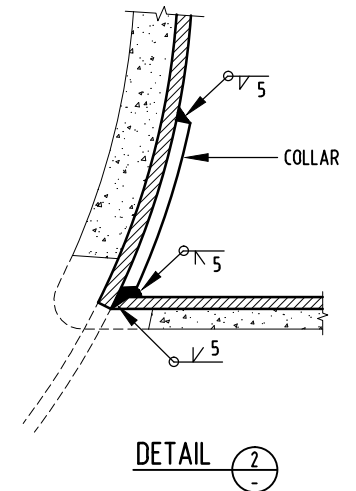
PLAN



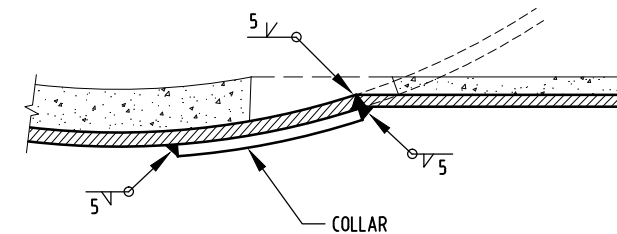
SCOUR VALVE TEE



PLAN



DETAIL 2

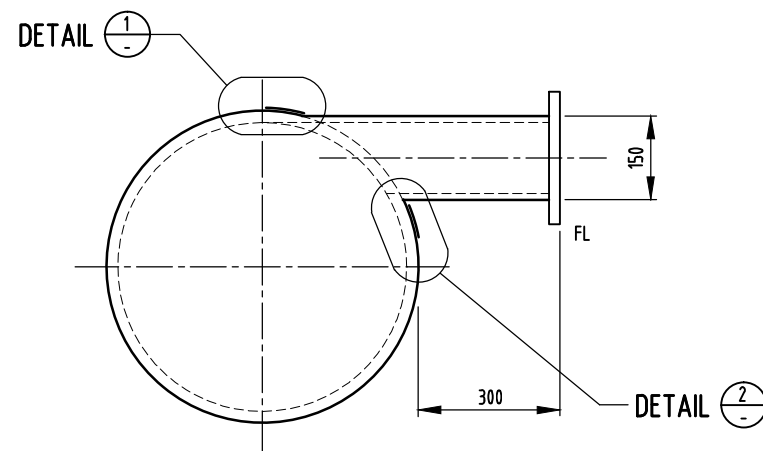


DETAIL 1

COLLAR REINFORCEMENT DETAILS

NOTES:

1. ALL STEEL USED FOR COLLARS SHALL BE IN ACCORDANCE WITH AS.3678.
2. ALL WELDED JOINTS TO BE MECHANICAL WIRE BRUSH CLEANED AND COATED WITH INORGANIC ZINC SULFATE PRIMER (MINIMUM 75 MICRONS).
3. ALL WELDS TO BE CONTINUOUS FULL WELD ALL ROUND TO MAIN PIPE AND BRANCH IN ACCORDANCE WITH AS.1554.1 CATEGORY SP UNLESS NOTED OTHERWISE.
4. TEST HOLES ARE PROVIDED TO ENABLE GAP UNDER COLLARS TO BE PRESSURISED TO CONFIRM COMPLETE WELDING INTEGRITY, HOLES SHALL BE PLUGGED WITH A SOCKET HEAD PLUG WITH TAPER THREAD UPON COMPLETION.
5. FIELD MORTAR CEMENT LINING TO BE REINSTALLED IN ACCORDANCE WITH MANUFACTURER'S SPECIFICATION.
6. ALL MAIN FLANGES TO BE RAISED FACE TYPE COMPLYING WITH AS.4087 FIGURE B7.
7. ALL FITTINGS TO BE ASSEMBLED IN THE FACTORY AND NOT ON SITE. FBPE COATING TO BE APPLIED AFTER FABRICATION.
8. PIPE DIAMETERS & WALL THICKNESS FOR FABRICATED FITTING TO BE AS FOLLOWS:
DN150 - 168 OD x 5.0mm, DN300 - 356 OD x 5.0mm, DN450 - 508 OD x 6.0mm,
DN600 - 660 OD x 6.0mm, DN750 - 813 OD x 7.0mm.
9. ALL MATERIAL AND WORKMANSHIP SHALL BE IN ACCORDANCE WITH THE RELEVANT STANDARDS AUSTRALIAN CODES, EXCEPT WHERE VARIED BY THE PROJECT SPECIFICATION.
10. 4 PART PETROLATUM TAPE SYSTEM TO BE SUITABLE FOR BELOW GROUND TROPICAL CLIMATE INSTALLATION: PRIMER, MASTIC FILLER, TAPE & PVC OVER WRAP TAPE.



AIR VALVE TEE

1	REDRAWN ON CAD. GENERAL AMENDMENTS 2021.	PW	JUNE'21	IL	DC
NO	DESCRIPTION	DRN	DATE	CKD	APPD
AMENDMENTS					



DES	IL	WATER STANDARD DRAWING		
DRN	PW	MAINLAYING		
CHK	IL	STANDARD WELDED MILD STEEL SCOUR VALVE		
APPD	DC	OR AIR VALVE TEE		
SCALE	N.T.S.	A3	DRAWING NUMBER	1
ISSUED	JUN'21			
ALL DIM. IN mm			W1-2-06C	
DRAFTING STANDARD TO A.S.1100		CAD PRODUCT - DO NOT AMEND MANUALLY		
				AMDT