



NUMBER OF CONDUCTORS:	4
CONDUCTOR CSA:	95 SQ.mm
RATED LOAD:	2.5 kN
BUNDLE DIAMETER:	37-39 mm
MOUNTING HOLE:	22 mm
BODY:	GALVANISED STEEL

ITEM 2: 95 SQ.MM CLAMP SUSPENSION COMBO

NUMBER OF CONDUCTORS: 4
CONDUCTOR CSA: 95 SQ.mm
RATED LOAD: 2.5 kN
BUNDLE DIAMETER: 37-39 mm
MOUNTING HOLE: 22 mm
BODY: CAST ALUMINIUM

INTEGRATED STRINGING ROLLER MOUNTING
DESIGN TO SUIT 10mm SPINDLES - 115mm
CENTRES




NUMBER OF CONDUCTORS: 4
CONDUCTOR CSA: 95 SQ.mm
RATED LOAD: 3 kN
BUNDLE DIAMETER: 37-39 mm
MOUNTING EYE Ø24 mm
ROLLER SPINDLES: 10mm - 115 mm
CENTERS

TO BE SUPPLIED FITTED WITH CAPTIVE SPINDLE
AND ROLLERS WITH TWO 'R' CLIPS TO RETAIN
ROLLER TO CLAMP

1. ITEMS MUST COMPLY WITH REQUIREMENTS OF AS 3766.
2. ITEM 2 MUST HAVE ROLLER POSITIONING HOLES TO SUIT ITEM 3.
3. REFER TO STSP 01-022 FOR MORE DETAILS.
4. ITEM 3 MAY BE USED TO ASSIST CABLE INSTALLATION IN CONJUNCTION WITH ITEM 2. AND IS RE-USABLE.



PowerWater
NORTHERN TERRITORY

DES	-	POWER STANDARD DRAWING			
DRN	H.T	LINE HARDWARE LV ABC CLAMP SUSPENSION & SUSPENSION/ROLLER			
CKD	G.S.				
APPD	B.T.K				
SCALE	-				
ISSUED	-	A3	DRAWING NUMBER	S04-01-02-10_1	
ALL DIM. IN mm					
DRAFTING STANDARD TO A.S.1100		CAD PRODUCT - DO NOT AMEND MANUALLY			AMD

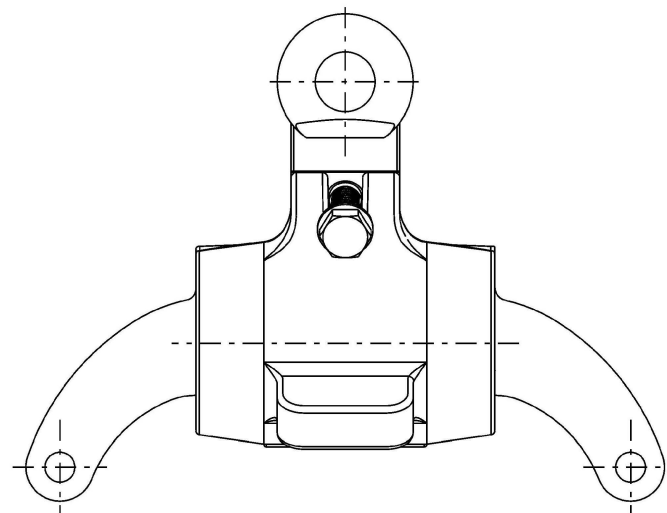


ITEM 4: 150 SQ.MM CLAMP SUSPENSION

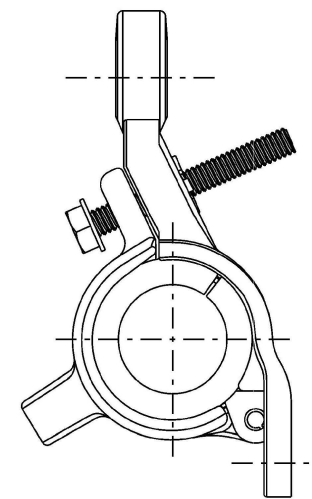
ITEM NUMBER: 415584

NUMBER OF CONDUCTORS: 4
CONDUCTOR CSA: 150 SQ.mm
RATED LOAD: 2.5 kN
BUNDLE DIAMETER: 43-47 mm
MOUNTING HOLE: 22 mm
BODY: ALUMINIUM ALLOY

SPLIT UV RESISTANT ELASTOMER INSERT



FRONT VIEW



SIDE VIEW

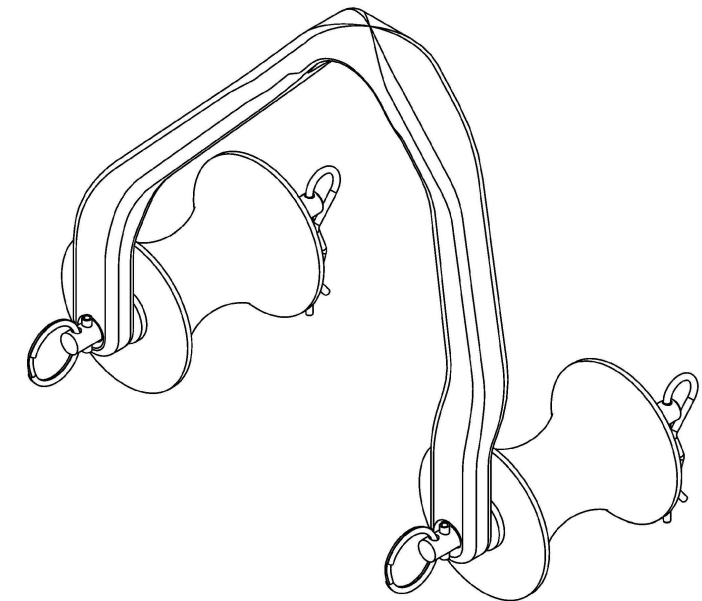
ITEM 5: 150 SQ.MM CLAMP SUSPENSION COMBO

ITEM NUMBER: 504848

NUMBER OF CONDUCTORS: 4
CONDUCTOR CSA: 150 SQ.mm
BUNDLE DIAMETER: 43-47 mm
MOUNTING HOLE: 22 mm
BODY: CAST ALUMINIUM

SPLIT UV RESISTANT ELASTOMER INSERT

INTEGRATED STRINGING ROLLER MOUNTING
DESIGN TO SUIT 10mm SPINDLES - 210 mm
CENTERS



ITEM 6: 150 SQ.MM ROLLER ASSEMBLY

ITEM NUMBER: 504849



NUMBER OF CONDUCTORS: 4
CONDUCTOR CSA: 150 SQ.mm
BUNDLE DIAMETER: 43-47 mm
ROLLER SPINDLES: 10mm - 210 mm CENTERS

NYLON ROLLERS

TO BE SUPPLIED FITTED WITH CAPTIVE SPINDLE
AND ROLLERS WITH TWO 'R' CLIPS TO RETAIN
ROLLER TO CLAMP.

NOTES:

- ITEMS MUST COMPLY WITH REQUIREMENTS OF AS 3766.
- ITEM 5 MUST HAVE ROLLER POSITIONING HOLES TO SUIT ITEM 6.
- REFER TO STSP 01-022 FOR MORE DETAILS.
- ITEM 6 MAY BE USED TO ASSIST CABLE INSTALLATION IN CONJUNCTION WITH ITEM 5, AND IS RE-USABLE.

<div></div>	DES	-	POWER STANDARD DRAWING			
	DRN	H.T	LINE HARDWARE LV ABC CLAMP SUSPENSION & SUSPENSION/ROLLER			
	CKD	G.S.				
	APPD	B.T.K				
	SCALE	-				
	ISSUED	-	A3	DRAWING NUMBER	S04-01-02-10_2	<div></div>
	ALL DIM. IN mm					
	DRAFTING STANDARD TO A.S.1100		CAD PRODUCT - DO NOT AMEND MANUALLY		AMDT	
	1 0	ADDED NOTE 4. UPDATED SHEET 1. ISSUED FOR CONSTRUCTION	P.BH. A.N.	AUG'23 SEP'21	B.C. A.N.	B.V. B.V.
	NO	DESCRIPTION	DRN	DATE	CKD	APPD
AMENDMENTS						