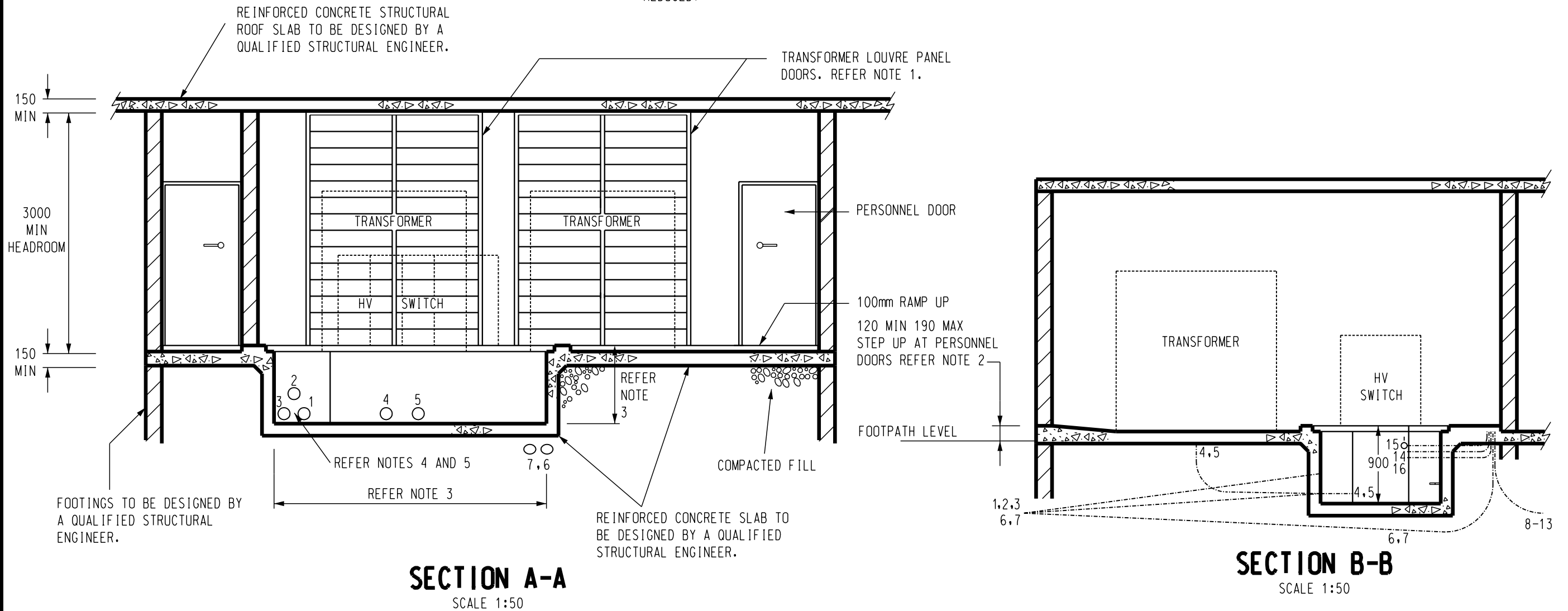


NOTES

1. THE TRANSFORMER LOUVRE PANEL DOOR OPENING SHOULD PREFERABLY BE TO THE SUBSTATION CEILING HEIGHT, AS SHOWN. IF IT IS NOT POSSIBLE DUE TO STRUCTURAL DIFFICULTIES, A MINIMUM OPENING HEIGHT TO SUIT THE TRANSFORMER AND LIFTING REQUIREMENTS IS ACCEPTABLE.
2. ADDITIONAL STEPS (UP TO A MAXIMUM OF 3) INCLUDING AN APPROPRIATE HANDRAIL MAY BE PROVIDED AT ANY PERSONNEL DOORWAY. IF THE STEPS ARE TO BE LOCATED WITHIN THE SUBSTATION CHAMBERS, IT WILL BE NECESSARY TO EXTEND THE SUBSTATION CHAMBER TO ACCOMMODATE THE ENCROACHMENT OF THE STEPS, SUCH THAT THE INTERNAL DIMENSIONS OF THE SUBSTATION CHAMBER ARE NOT REDUCED.
3. THESE DIMENSIONS VARY WITH HV SWITCHES USED. ALL DESIGNS MUST BE DISCUSSED WITH AND APPROVED BY THE REGIONAL ENGINEER.
4. ALL CONDUITS ENTERING THE CABLE PIT SHALL FINISH FLUSH WITH THE INTERNAL PIT WALL AND BE CAPPED WITH A BELL MOUTH FITTING.
5. ALL CONDUITS ENTERING THE SUBSTATION SHALL BE SEALED WITH A PWC APPROVED SEALING METHOD, REFER TO S02-01-09-03.



SECTION A-A
SCALE 1:50

SECTION B-B
SCALE 1:50

						DES	I.PURVES	POWER STANDARD DRAWING			
						DRN	G.R./A.D.	INDOOR SUBSTATION			
						CKD	S.LEACH	TWO TRANSFORMER ARRANGEMENT			
						APPD	F.ROBSON	SURFACE CHAMBER - OPTION 2			
						SCALE	1:50	CONSTRUCTION DETAILS SHEET 2 OF 3			
						ISSUED	MARCH '98	A3	DRAWING NUMBER	S02-02-07-29	2
ALL DIM.	IN mm			AMDT							
2 TITLEBLOCK & DRAWING NUMBERS FORMATTED						K.T.	FEB'19	C.C.	C.C.		
1 NOTE 2 AMENDED, NOTE 4, 5 ADDED						A.T.	JAN'14	B.C.	B.C.		
NO	DESCRIPTION	DRN	DATE	CKD	APPD						
AMENDMENTS											



		POWER STANDARD DRAWING	
		INDOOR SUBSTATION	
		TWO TRANSFORMER ARRANGEMENT	
		SURFACE CHAMBER - OPTION 2	
		CONSTRUCTION DETAILS SHEET 2 OF 3	
		A3	DRAWING NUMBER
		S02-02-07-29	
		DRAFTING STANDARD TO A.S.1100	
		CAD PRODUCT - DO NOT AMEND MANUALLY	