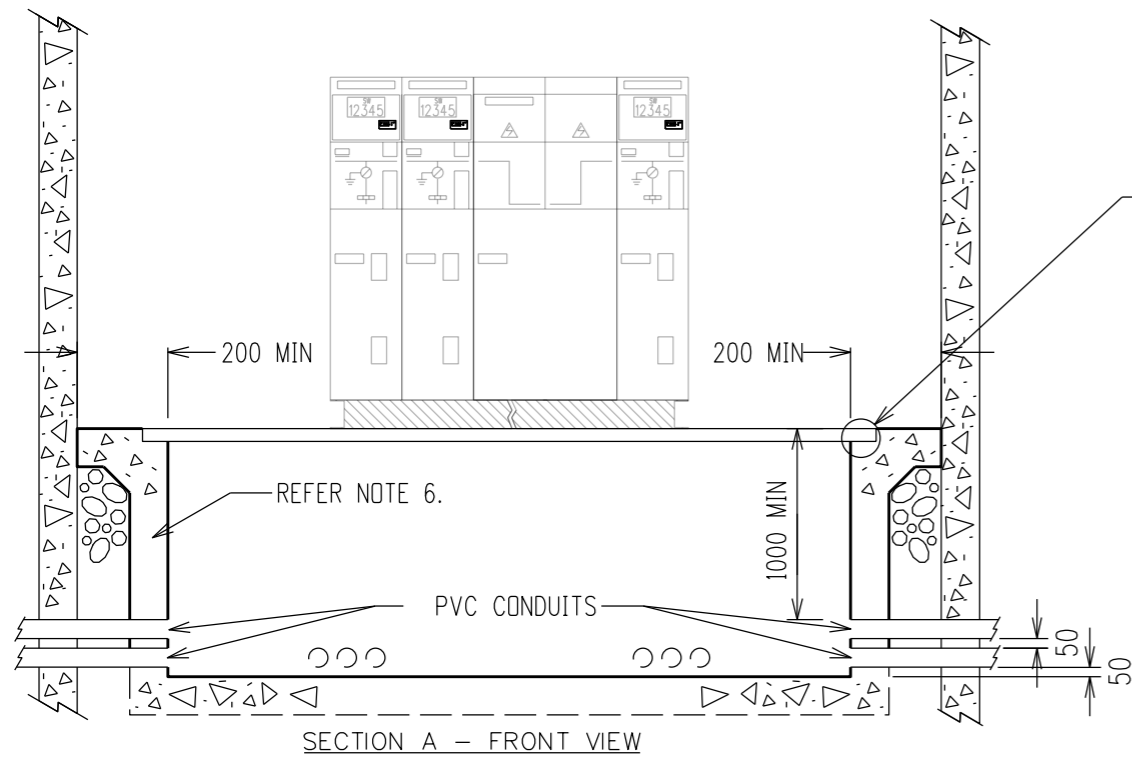
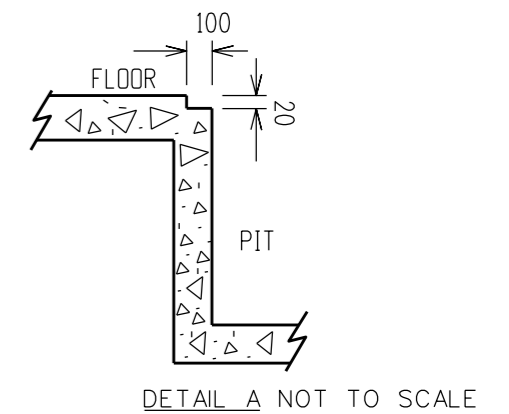
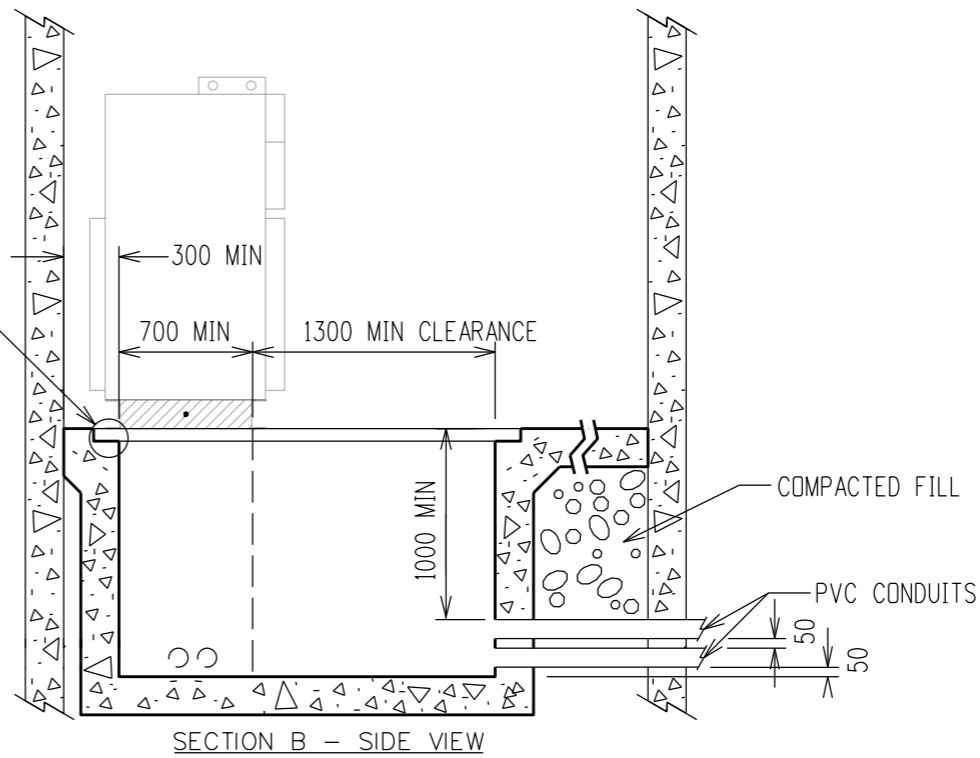


NOTES

1. CONCRETE SLAB MUST BE WELL LEVELED AND DIMENSIONS OF SWITCHGEAR FOUNDATION MUST BE EXACT, TOLERANCE $\pm 2\text{mm}$ GENERAL
2. SCHNEIDER SM6 SWITCHGEAR SHALL BE INSTALLED ON METAL PLINTH REFER TO S02-01-04-20 FOR MOUNTING FRAME.
3. EARTHING SHALL BE INSTALLED IN ACCORDANCE WITH DRG S02-02-05-09.
4. PLACE EQUIPMENT CENTRALLY WITHIN THE ROOM. ENSURE SUFFICIENT SPACE IS LEFT BETWEEN CABLE DUCTING WALL & SWITCHGEAR TO ALLOW FOR CABLE BENDING RADIUS IN GENERAL:
 1300mm FROM FRONT
 1400mm FROM SIDE
 300mm FROM REAR CABLE DUCTING WALL TO REAR SUBSTATION WALL
 REFER TO S02-04-02-05 FOR HV CABLE BENDING RADIUS, PULLING TENSION AND RATINGS.
5. ASSOCIATE SWITCHING STATION MISCELLANEOUS SERVICE LAYOUT REFER TO S02-02-07-09, AND S02-02-07-10.
6. ALL CONCRETE SHALL BE MINIMUM 32MPa WITH MINIMUM SLUMP OF 80MM TO ASI012.3.1.
7. ALL CONDUITS FOR HV CABLES SHALL BE 150MM DIAMETER HD PVC. ALL CONDUITS ENDING IN THE CABLE TRENCH SHALL BE TERMINATED WITH BELL-MOUTH ENDS.
8. OVERALL LENGTH OF SWITCH PANEL WILL VARY WITH THE NUMBER AND TYPE OF PANELS USED.
 SM6 TYPE IM, QM, GBM AND IMB PANELS ARE 375MM WIDE.
 SM6 TYPE DMI AND GBC PANELS ARE 750MM WIDE.
9. AFTER INSTALLATION OF THE HV SWITCHGEAR, THE REMAINING OPEN SECTIONS OF THE HV PIT SHALL BE COVERED BY AN GALVANIZED EXPANDING METAL GRID SIMILAR TO MELWIRE LA205.
10. ALL CONDUITS SHALL BE FILLED TO PREVENT MOISTURE AND VERMIN INTRUSION ON COMPLETION S02-01-09-06.



SEE DETAIL A



NO	DESCRIPTION	DRN	DATE	CKD	APPD
4	REMOVED REFERENCE TO FOAM. DELETED NOTE 11.	A.N.	NOV'20	B.V.	B.C.
3	TITLEBLOCK & DRAWING NUMBER FORMATTED	K.T.	FEB'19	C.C.	C.C.
2	NOTES AMENDED	K.T.	ARP'16	I.B.	B.C.
1	NOTE 11 ADDED	C.C.	FEB'15	A.T.	B.C.
0	ISSUED FOR CONSTRUCTION	V.T.	FEB'13	A.T.	B.C.
AMENDMENTS					



DES	V. TANG	POWER STANDARD DRAWING	
DRN	V. TANG	SCHNEIDER ELECTRIC SM6 SWITCHING STATION AND INTAKE STATION FOUNDATION DETAILS	
CKD	A. TAYLOR		
APPD	B. CHEUNG		
SCALE	N.T.S		
ISSUED	DEC'12	A3	DRAWING NUMBER S02-02-06-32
ALL DIM. IN mm			
DRAFTING STANDARD TO A.S.1100		CAD PRODUCT - DO NOT AMEND MANUALLY	

