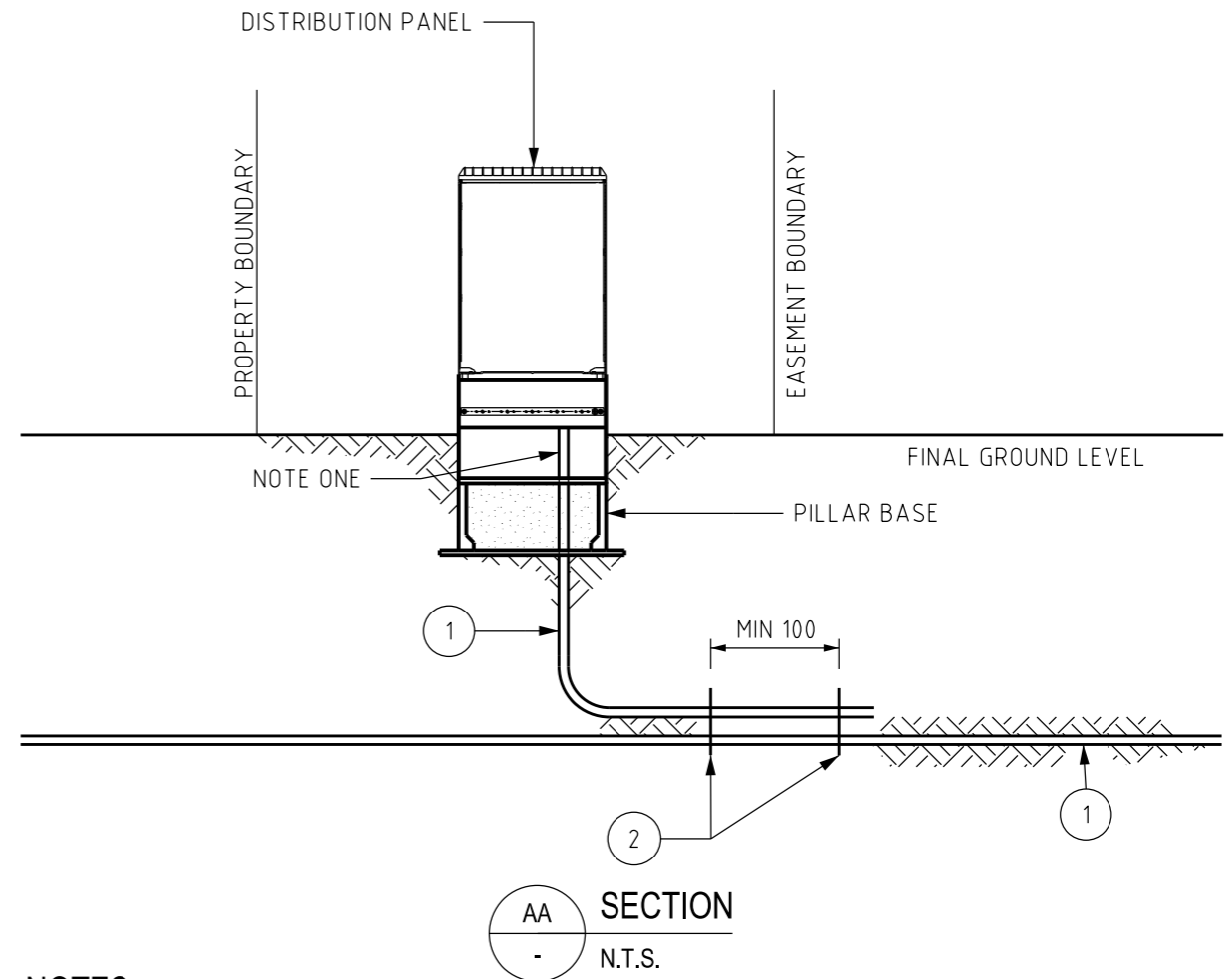


PLAN VIEW  
N.T.S.

ITEM	QTY	DESCRIPTION	ITEM NUMBER	DRG NUMBER
2	2	COMPRESSION CONNECTOR "C" PROFILE	255786	S01-01-05-08
1	AR	CONDUCTOR - BARE COPPER - 70sqmm	9803	S01-01-05-05
MATERIAL SCHEDULE				



AA SECTION  
N.T.S.

NOTES:

1. CONDUCTOR - BARE COPPER 70sqmm<sup>2</sup> (ITEM 1) SHALL BE CONNECTED TO PILLAR EARTH BAR.
2. A NEUTRAL AND EARTH M.E.N LINK SHALL BE PROVIDED WITH A SEPARATED 70sqmm<sup>2</sup> COPPER Y/G INSULATED WITHIN THE PILLAR. REFER TO S02-02-03-08 FOR DETAILS.
3. EXAMPLE SHOWN IS FOR 3 SLOT PILLAR (396 WIDE). SAME PRINCIPLE APPLIES FOR 5 SLOT PILLAR (596 WIDE).

NO	DESCRIPTION	DRN	DATE	CKD	APPD
2	UPDATE EARTHING SYMBOLGY	C.C.	JAN'21	B.V.	B.C.
1	TITLEBLOCK & DRAWING NUMBER FORMATTED	K.T.	FEB'19	C.C.	C.C.
0	ISSUED FOR CONSTRUCTION	C.C.	SEPT'14	B.C.	B.C.
AMENDMENTS					



DES		POWER STANDARD DRAWING	
DES	B.CHEUNG	EARTHING	
DRN	C.COPPINS	DISTRIBUTION PILLARS 3 & 5 SLOT	
CKD	B.CHEUNG	RESIDENTIAL - GENERAL	
APPD	B.CHEUNG		
SCALE	N.T.S.		
ISSUED	SEP 2014	A3	DRAWING NUMBER
ALL DIM. IN mm			S02-02-05-13
DRAFTING STANDARD TO A.S.1100		CAD PRODUCT - DO NOT AMEND MANUALLY	

