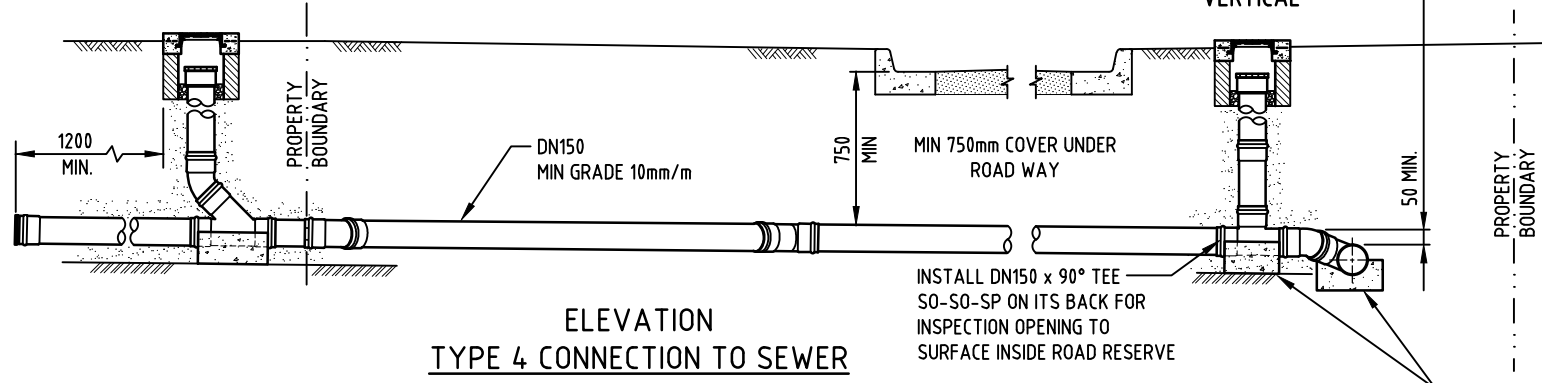
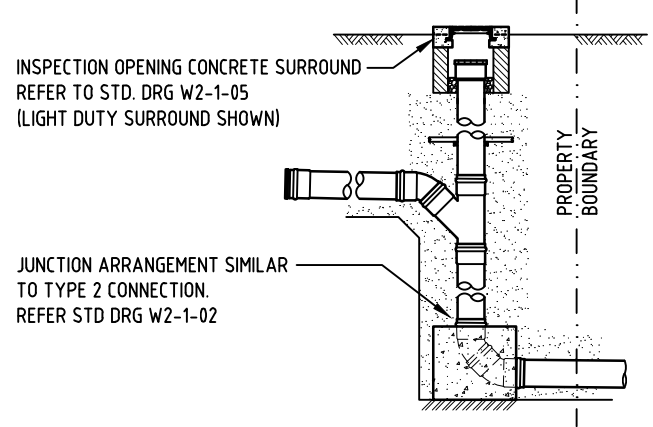


PLAN OF END CONNECTIONS



ELEVATION TYPE 4 CONNECTION TO SEWER



ALTERNATIVE END CONNECTION (TYPE 4A)

NOTES:

1. THIS DRAWING DEPICTS THE SEWER AND SEWER CONNECTION CONSTRUCTED IN PVC. OTHER APPROVED PIPELINE MATERIALS ARE PERMITTED.
2. THE CLASS OF ALL PIPES SHALL BE AS SPECIFIED ON THE PROJECT DESIGN PLANS / PROJECT SPECIFICATIONS.
3. ELASTOMERIC SEALING RINGS FOR USE WITH PIPELINE MATERIALS COMPLYING WITH AUSTRALIAN STANDARDS SHALL COMPLY WITH AS 1646. ELASTOMERIC SEALING RINGS SHALL BE OF A MATERIAL TYPE APPROVED BY PWC.
4. ALL PVC PIPES AND FITTINGS SHALL BE RUBBER RING JOINTED (RRJ) UNLESS SHOWN AS 'SCJ' (SOLVENT WELD JOINTED).
5. PVC PIPE INSTALLATION SHALL BE IN ACCORDANCE WITH AS 2032. PIPE INSTALLATION SHALL COMPLY WITH THE PROJECT SPECIFICATION.
6. CONCRETE SHALL COMPLY WITH AS 1379. THRUST BLOCK CONCRETE IS TO BE GRADE N25 (25MPa, 20mm MAX AGGREGATE) AND WHERE APPLICABLE SHALL BE POURED AGAINST UNDISTURBED GROUND. PROVIDE FELT OR APPROVED PLASTIC BOND BREAKER BETWEEN FITTING AND CONCRETE. ALL OTHER CONCRETE TO BE GRADE N32 (32MPa, 20mm MAX AGGREGATE).
7. FOR PROPERTY CONNECTIONS LARGER THAN DN150 DETAILS SHALL BE SUBMITTED TO PWC FOR APPROVAL.
8. WHERE THE RETICULATION SEWER MAIN IS DN300 OR WHERE THE RETICULATION SEWER MAIN IS IMMEDIATELY DOWNSTREAM OF AN ACCESS CHAMBER RECEIVING THE DISCHARGE FROM A PUMPING STATION OR A STEP (SEPTIC TANK EFFLUENT PUMPING) SYSTEM, A BOUNDARY TRAP SHALL BE INSTALLED BY THE PLUMBER AT THE TIME THAT THE INTERNAL DRAINAGE CONNECTION IS MADE, REFER TO AS/NZS 3500.
9. INSTALL HEAVY DUTY INSPECTION OPENINGS IN ROAD OR FOOTPATH RESERVES OR WHERE SPECIFIED ON PROJECT DESIGN PLANS/SPECIFICATIONS.
10. FINISH INSPECTION OPENINGS IN ROAD AND FOOTPATH RESERVES FLUSH WITH SURROUNDING SURFACE. INSPECTION OPENINGS IN OTHER AREAS TO BE FINISHED 50mm ABOVE FINISHED SURFACE LEVEL FOR LIGHT DUTY AND 100mm ABOVE FINISHED SURFACE LEVEL FOR HEAVY DUTY.
11. WHERE CONNECTION TO SEWER IS 2.0m OR DEEPER TYPE 1 OR TYPE 4 CONNECTIONS CAN ONLY BE USED WITH APPROVAL FROM PWC.
12. ALL FITTINGS SHALL BE SINGLE MOULDED HEAVY DUTY REINFORCED FITTINGS.

7	GENERAL AMENDMENTS 2022.	P.W.	MAY '22	IL.	D.C.
6	GENERAL AMENDMENTS 2018.	P.W.	SEPT '18	IL.	D.C.
5	MINIMUM GRADE ADDED.	RGI	NOV '08	R.J.	J.P.
4	ALTERNATIVE END CONNECTION MODIFIED AND TYPE 5 MOVED TO DRAWING W2-1-10.	RGI	AUG '08	R.J.	J.P.
3	DRAWING REARRANGED. NOTES AMENDED.	RGI	JUN '07	R.J.	J.P.
2	PROPERTY I.O. SURROUND CHANGED TO 1000x1000, CONNECTION TERMINATION POINT CHANGED.	RGI	APR '01	N MC	N MC
1	NOTES AMENDED. INSPECTION OPENING ADDED.	AG	AUG '00	PS	NWM
NO	DESCRIPTION	DRN	DATE	CKD	APPD
AMENDMENTS					

DES	C.PASCOE
DRN	R.INNES
CHK	N.McCARTHY
APPD	H.YAU
SCALE	N.T.S.
ISSUED	JUN '96
ALL DIM. IN mm	
DRAFTING STANDARD TO A.S.1100	



SEWERAGE STANDARD DRAWING	
CONNECTIONS	
TYPE 4 SEWER CONNECTIONS	
DN150	
A3	DRAWING NUMBER W2-1-08
7	
AMDT	
CAD PRODUCT - DO NOT AMEND MANUALLY	