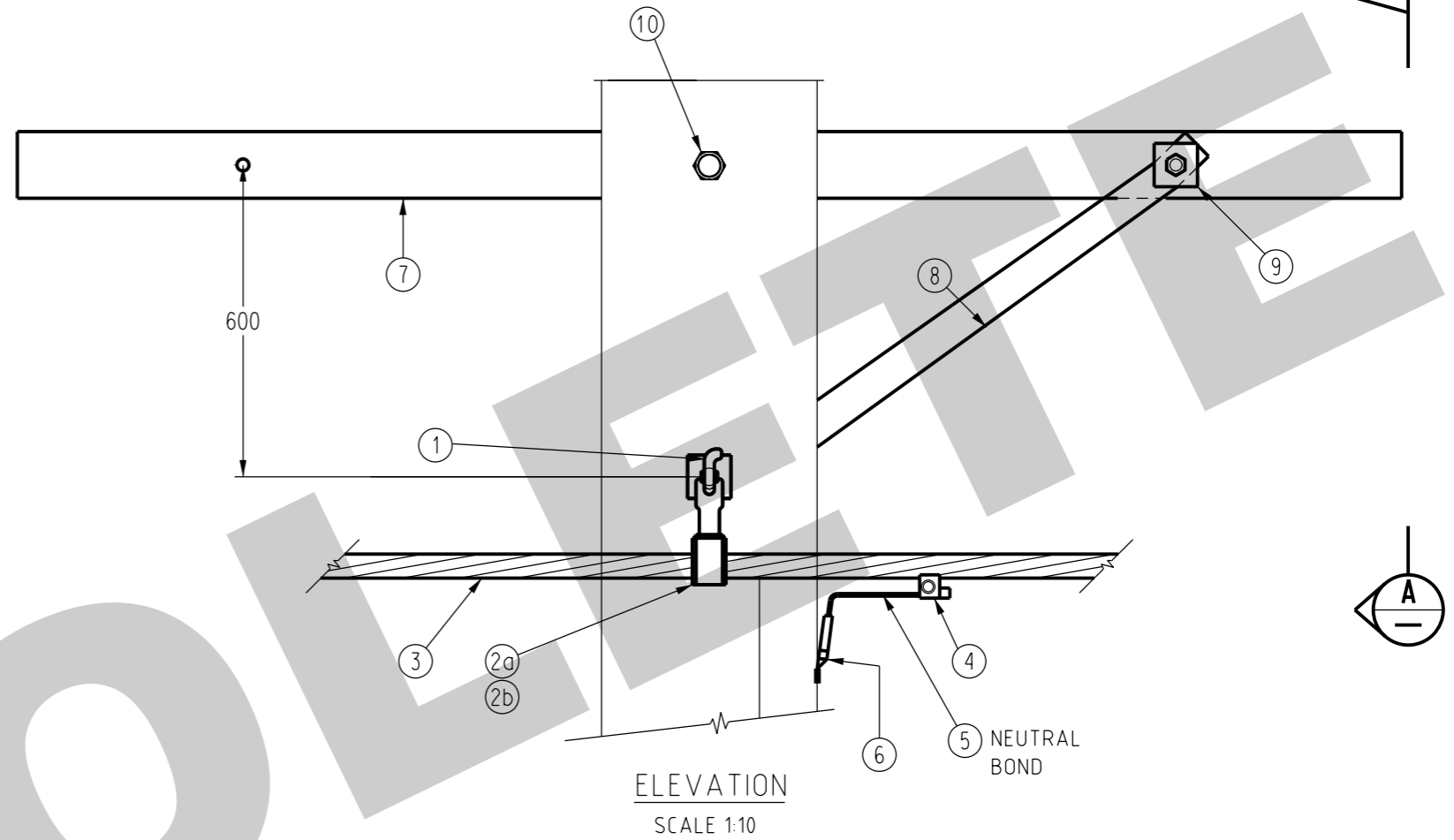
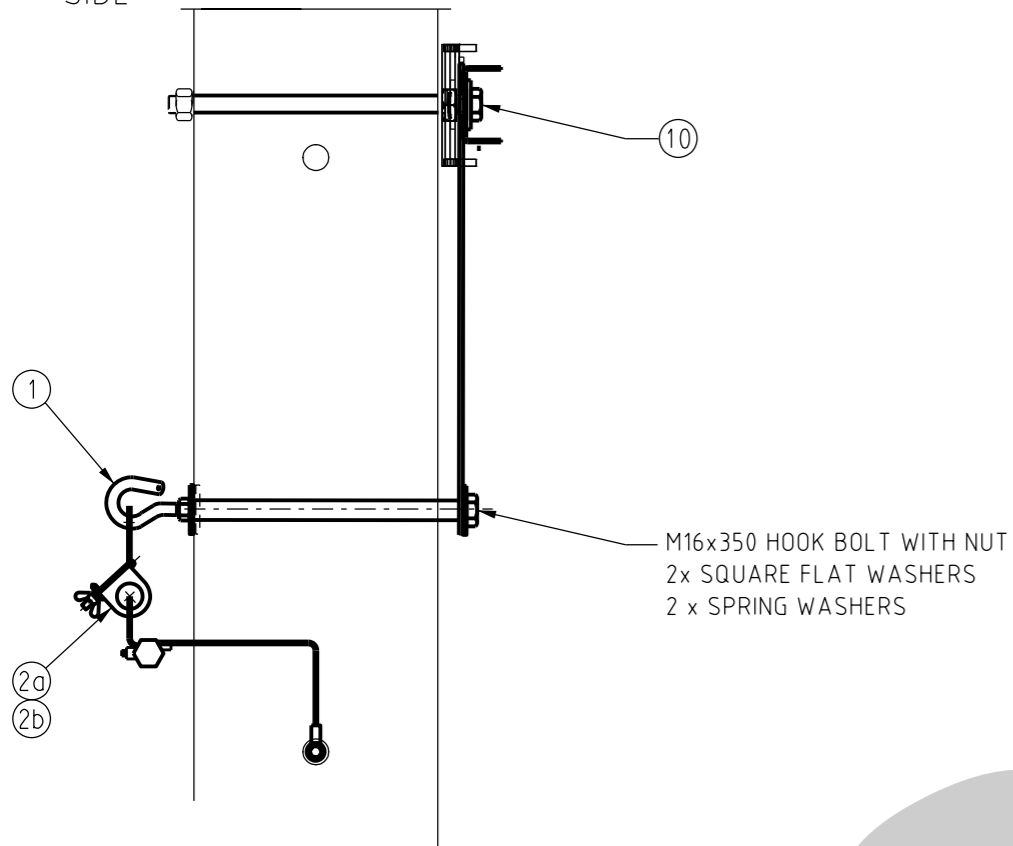


ROAD SIDE

PROPERTY SIDE



VIEW **A**  
SCALE 1:10

**NOTES:**

1. NEUTRAL TO BE BONDED ON EVERY POLE VIA M12 NUTS WELDED INTO THE POLE.
2. COPPER NEUTRAL BOND TO BE FITTED BELOW ALUMINIUM CONDUCTORS.
3. FOR CORRECT APPLICATION OF HOOK BOLTS REFER DRGS. S04-02-02-02 & S04-02-02-04 FOR FULL DETAILS.
4. FOR ROUND POLE CONSTRUCTIONS ONLY. FOR RECTANGLE POLES REFER TO S04-02-01-27.

10	1	M24x400 GALV. STEEL BOLT C/W NUT	-	-
	2	M24 75x75x5 SQUARE GALV. STEEL WASHER	298828	S01-01-04-43
	1	M24 GALV. STEEL SPRING WASHER	114330	
9	1	M16x60 GALV. STEEL BOLT C/W NUT	500875	S01-01-04-43
	2	M16 65x65x5 SQUARE GALV. STEEL WASHER	298695	
	1	M16 GALV. STEEL SPRING WASHER	114322	
8	1	CROSSARM BRACE 50x5 DURAGAL	298687	S01-02-01-49
7	1	LV SERVICE CROSSARM 100x50x4 DURAGAL CC	298554	S01-01-02-11
6	1	LUG COMPRESSION Cu 35 SQ.MM M12	156240	S02-01-02-11
5	AR	CABLE 35 SQ.MM Cu	407083	S02-01-01-35
4	1	CONNECTOR, PIERCING 150-50/35-6 SQ.MM	415586	S04-01-02-15
3	AR	CABLE LV-ABC Al 4x95 SQ.MM	197665	S04-01-01-01
2b	1	SUSPENSION CLAMP 4x95 SQ.MM	197681	S04-01-02-10
2a	1	SUSPENSION CLAMP 4x95 SQ.MM ROLLER COMBO.	198408	S04-01-02-10
1	1	HOOK BOLT M16x350 C/W NUT	-	-
ITEM	QTY	DESCRIPTION	ITEM NUMBER	DRG. REF.

MATERIAL SCHEDULE

2	REFORMATTED TABLE & NOTES. UPDATED ITEMS 1, 2, 4, 5, 6, 7 & 8. ADDED ITEMS 9 & 10, & NOTE 4. UPDATED TITLE. OBSOLETE	A.N.	JUL'21	A.N.	B.C.
1	TITLEBLOCK & DRAWING NUMBER FORMATTED	K.T.	DEC'19	C.C.	C.C.
0	ISSUED FOR CONSTRUCTION	A.T.	JUL'11	B.N.	B.C.
NO	DESCRIPTION	DRN	DATE	CKD	APPD
AMENDMENTS					

**PowerWater**  
NORTHERN TERRITORY

DES	M. BOCK	POWER STANDARD DRAWING		
DRN	A.SCHMID	ASSEMBLIES		
CKD	M. BOCK	LV - ABC - BOLTED CONNECTIONS		
APPD	F.ROBSON	INTERMEDIATE SUSPENSION		
SCALE	AS SHOWN	FOR ROUND POLE		
ISSUED	AUG'01	A3	DRAWING NUMBER	S04-02-01-20
ALL DIM.	IN mm			
DRAFTING STANDARD TO A.S.1100		CAD PRODUCT - DO NOT AMEND MANUALLY		AMDT 2