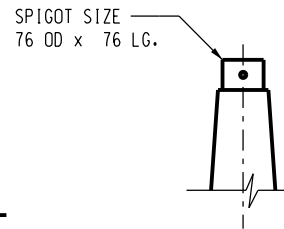
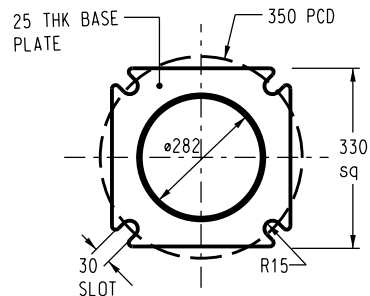


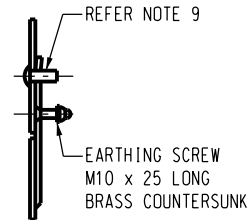
**ITEM 1 - 12.0m POST
TOP TYPE COLUMN
ITEM NUMBER 8961**



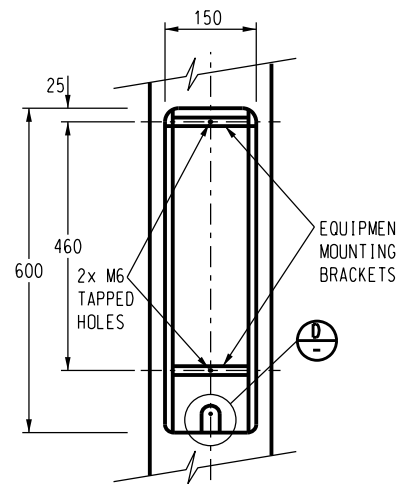
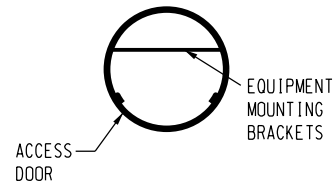
SPIGOT - DETAIL A
SCALE 1:10



BASE PLATE - DETAIL B
SCALE 1:10



DETAIL D
SCALE 1:5



EQUIPMENT ACCESS - DETAIL C
SCALE 1:10
(DOOR REMOVED FOR CLARITY)

NOTES :

- ALL WELDING AND WELD PREPARATION SHALL BE IN ACCORDANCE WITH AS1554.
- CIRCUMFERENTIAL WELDS TO BE JOGGLED BUTT TYPE. LONGITUDINAL WELDS TO BE SINGLE BUTT TYPE. ALL WELDS TO BE MADE BY CONTINUOUS AUTOMATIC PROCESS AND ARE NOT TO BE DRESSED SMOOTH.
- AFTER FABRICATION ALL COMPONENTS TO BE ACID DE-SCALED AND HOT DIPPED GALVANIZED MINIMUM 450g/sq.m TO AS4680.
- WIND LOADINGS TO COMPLY WITH THE REQUIREMENTS OF AS1170.2 - SECTION 4
DESIGNS ARE TO BE BASED ON -
- MAXIMUM WIND SPEED OF $V_u = 66\text{m/sec}$ DERIVED FROM A DESIGN LIFE OF 25 YEARS WITH A 5% PROBABILITY FACTOR OF V_u BEING EXCEEDED IN THAT PERIOD.
- MAXIMUM WIND SPEED OF $V_s = 47\text{m/sec}$ DERIVED FROM A DESIGN LIFE OF 25 YEARS WITH A 63% PROBABILITY FACTOR OF V_s BEING EXCEEDED IN THAT PERIOD WITH A MAXIMUM DEFLECTION LIMIT OF 4% OF NOMINAL LENGTH.
- REGION 'C' AND TERRAIN CATEGORY '3'
- LUMINARIES WITH A WIND AREA OF 0.2sq.m, A MASS OF 10kg EACH AND DRAG CO-EFFICIENT OF 0.5
- COLUMNS ARE TO CONFORM TO THE REQUIREMENTS OF AS4100 AND AS1798.
- COLUMNS ARE TO HAVE CONTINUOUS TAPER OVER THEIR ENTIRE LENGTH AND A STEEL THICKNESS OF NOT LESS THAN 3mm.
- TWO PIECE COLUMNS MUST BE ASSEMBLED PRIOR TO DELIVERY.
- ACCESS DOORS ARE NOT INTERCHANGEABLE. ENSURE THAT INDIVIDUAL COLUMNS AND DOORS ARE SUITABLY MATCHED AND MARKED.
- EQUIPMENT ACCESS DOOR TO BE PROVIDED (DETAIL C) HAVING 'TAMPER PROOF' LOCKING DEVICE. DOOR ACCESS SCREW TO BE M10 STAINLESS STEEL I.S.O. METRIC BUTTON HEAD SOCKET TYPE.
- ALL POLE MANUFACTURERS SHALL COMPLY WITH ISO 3834.

9	TITLEBLOCK & DRAWING NUMBER FORMATTED	K.T.	FEB'19	C.C.	C.C.
8	CORRECTED POLE SIZE DIMENSION	P.H.	OCT'17	B.V.	I.B.
7	GALVANIZING STANDARD UPDATED TO AS4680 NOTE 10 ADDED	A.T.	JAN'13	B.C.	B.C.
6	BASE PLATE - DETAIL B AMENDED	J.C.	NOV'08	B.C.	S.C.
NO	DESCRIPTION	DRN	DATE	CKD	APPD
AMENDMENTS					



DES	-	POWER STANDARD DRAWING		
DRN	A.DAVIS	COLUMN TAPERED STEEL 12 METRE POST TOP TYPE		
CKD	R.INNES			
APPD	F.ROBSON	DRAWING NUMBER S03-01-01-07		
SCALE	AS SHOWN			
ISSUED	MAY'98	A3	S03-01-01-07	
ALL DIM. IN mm				
DRAFTING STANDARD TO A.S.1100		CAD PRODUCT - DO NOT AMEND MANUALLY		9 AMD T