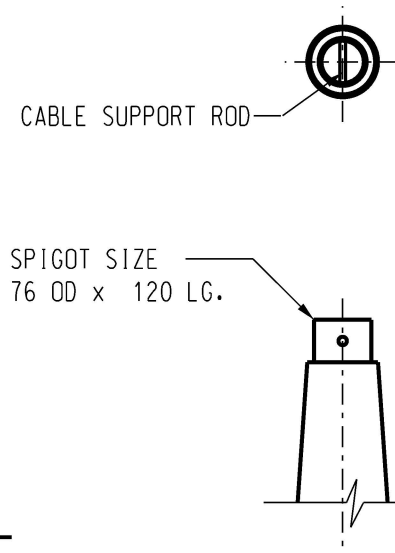
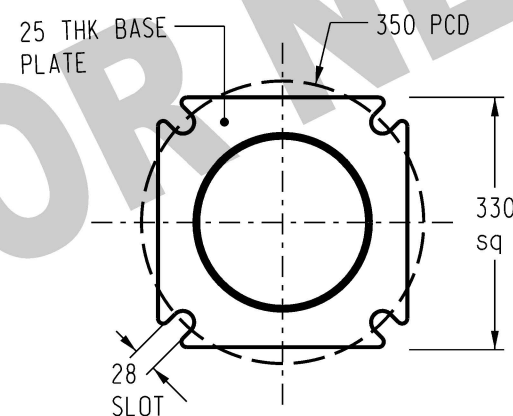


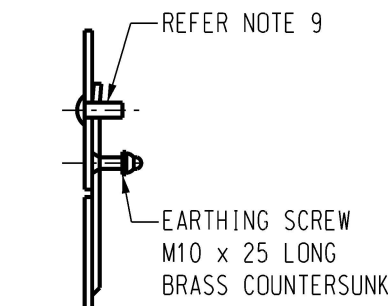
**ITEM 1 - 12.0m POST**  
**TOP TYPE COLUMN**  
**ITEM NUMBER 8961**



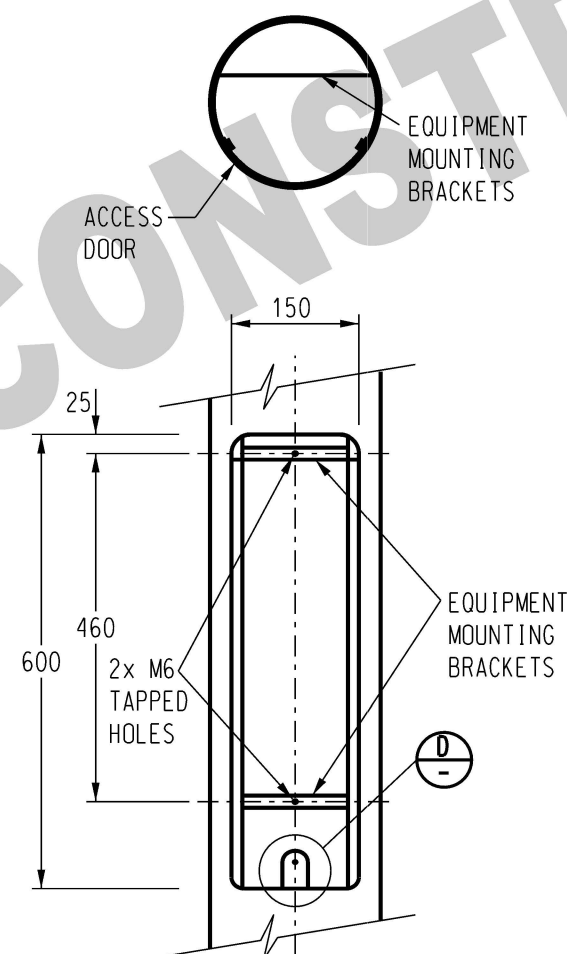
**SPIGOT - DETAIL A**  
 SCALE 1:10



**BASE PLATE - DETAIL B**  
 SCALE 1:10



**DETAIL D**  
 SCALE 1:5



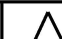
**EQUIPMENT ACCESS - DETAIL C**  
 SCALE 1:10  
 (DOOR REMOVED FOR CLARITY)

## NOTES :

- ALL WELDING AND WELD PREPARATION SHALL BE IN ACCORDANCE WITH AS1554.
- CIRCUMFERENTIAL WELDS TO BE FILLET. LONGITUDINAL WELDS TO BE SINGLE BUTT TYPE. LONGITUDINAL WELDS TO BE MADE BY CONTINUOUS AUTOMATIC PROCESS AND ARE NOT TO BE DRESSED SMOOTH.
- AFTER FABRICATION ALL COMPONENTS TO BE ACID DE-SCALED AND HOT DIPPED GALVANIZED TO AS4680.
- WIND LOADINGS TO COMPLY WITH THE REQUIREMENTS OF AS1170.2 - SECTION 4  
 DESIGNS ARE TO BASED ON -  
 - MAXIMUM WIND SPEED OF  $V_u = 61\text{m/sec}$  DERIVED FROM A DESIGN LIFE OF 25 YEARS.  
 - MAXIMUM WIND SPEED OF  $V_s = 28\text{m/sec}$  DERIVED FROM A DESIGN LIFE OF 25 YEARS WITH A MAXIMUM DEFLECTION LIMIT OF 5% OF NOMINAL LENGTH.  
 - REGION 'C' AND TERRAIN CATEGORY '2'
- COLUMNS ARE TO CONFORM TO THE REQUIREMENTS OF AS4100 AND AS1798.
- COLUMNS ARE TO HAVE CONTINUOUS TAPER OVER THEIR ENTIRE LENGTH AND A STEEL THICKNESS OF NOT LESS THAN 3mm.
- TWO PIECE COLUMNS MUST BE ASSEMBLED PRIOR TO DELIVERY.
- ACCESS DOORS ARE NOT INTERCHANGEABLE. ENSURE THAT INDIVIDUAL COLUMNS AND DOORS ARE SUITABLY MATCHED AND MARKED.
- EQUIPMENT ACCESS DOOR TO BE PROVIDED (DETAIL C) HAVING 'TAMPER PROOF' LOCKING DEVICE. DOOR ACCESS SCREW TO BE M10 STAINLESS STEEL I.S.O. METRIC BUTTON HEAD SOCKET TYPE.
- ALL POLE MANUFACTURERS SHALL COMPLY WITH ISO 3834.
- ROUND OR OCTAGONAL POLE SHAPES ACCEPTABLE.

11	NOTES 2 & 4 AMENDED. NOTE 11 ADDED. SPIGOT AND BASE PLATE SLOT SIZES AMENDED. DRAWING CHANGED TO NOT FOR CONSTRUCTION.	P.BH.	MAR'23	B.C.	B.V.
10	NOTES 3 & 4 AMENDED.	P.BH.	JAN'23	B.C.	B.V.
9	TITLEBLOCK & DRAWING NUMBER FORMATTED	K.T.	FEB'19	C.C.	C.C.
8	CORRECTED POLE SIZE DIMENSION	P.H.	OCT'17	B.V.	I.B.
7	GALVANIZING STANDARD UPDATED TO AS4680 NOTE 10 ADDED	A.T.	JAN'13	B.C.	B.C.
6	BASE PLATE - DETAIL B AMENDED	J.C.	NOV'08	B.C.	S.C.
NO	DESCRIPTION	DRN	DATE	CKD	APPD
AMENDMENTS					

**PowerWater**  
 NORTHERN TERRITORY

DES	-	POWER STANDARD DRAWING			
DRN	A.DAVIS	COLUMN TAPERED STEEL 12 METRE POST TOP TYPE			
CKD	R.INNES				
APPD	F.ROBSON				
SCALE	AS SHOWN				
ISSUED	MAY'98	A3	DRAWING NUMBER	S03-01-01-07	
ALL DIM. IN mm					
DRAFTING STANDARD TO A.S.1100			CAD PRODUCT - DO NOT AMEND MANUALLY		AMD