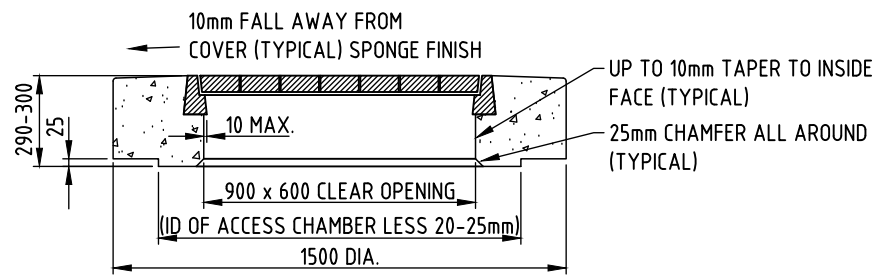


PLAN

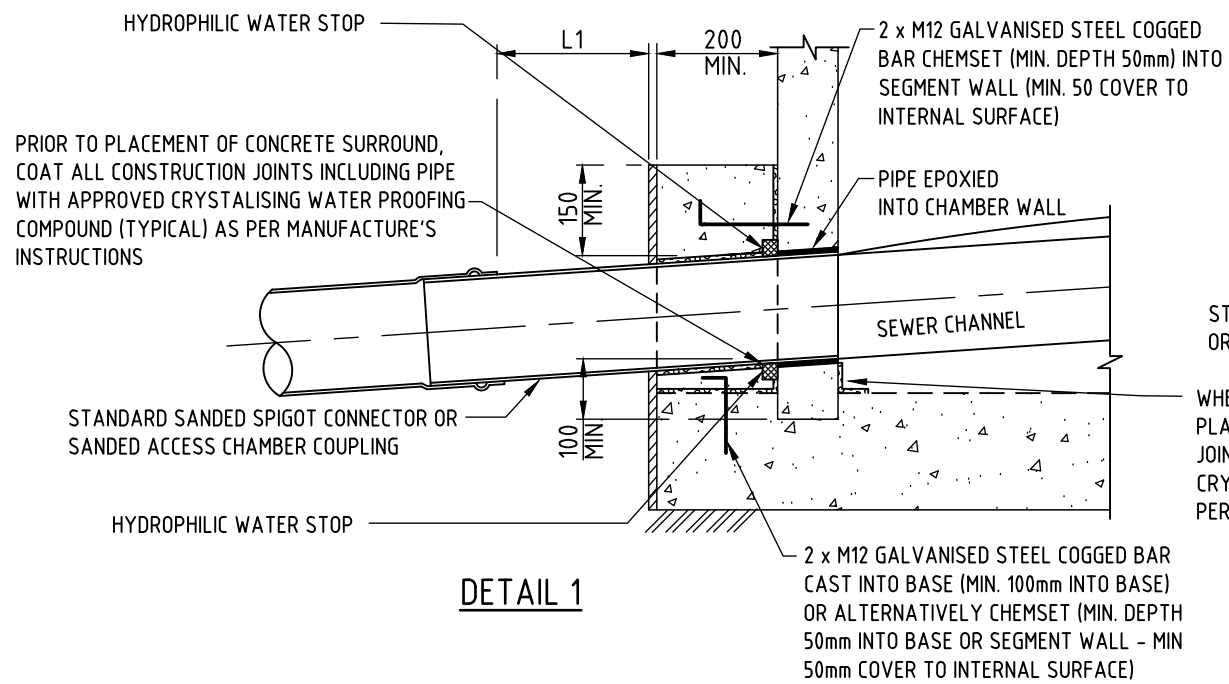
1200 DIA ACCESS CHAMBER - RECTANGULAR COVER

1200 DIA. (NOMINAL), MINIMUM INTERNAL DIAMETER 1100mm
REFER TO NOTE 13 ON STD DRG W2-2-01D

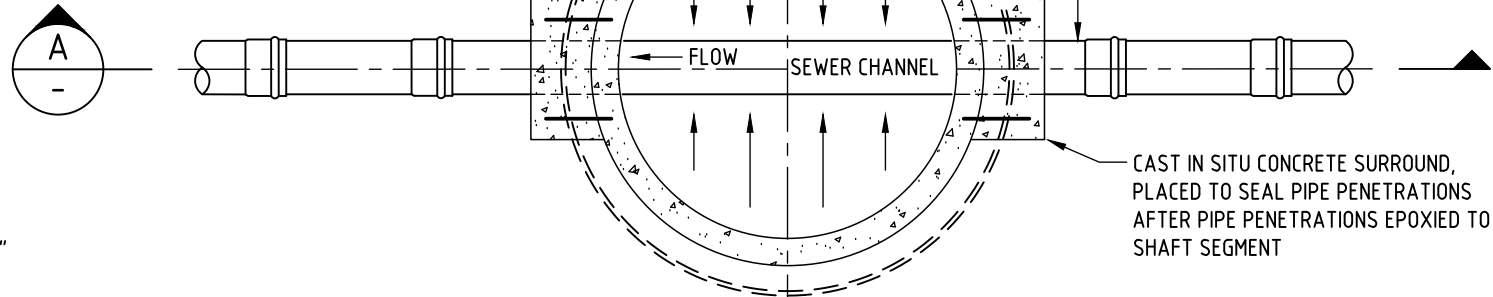


SECTION C CLASS D COVER

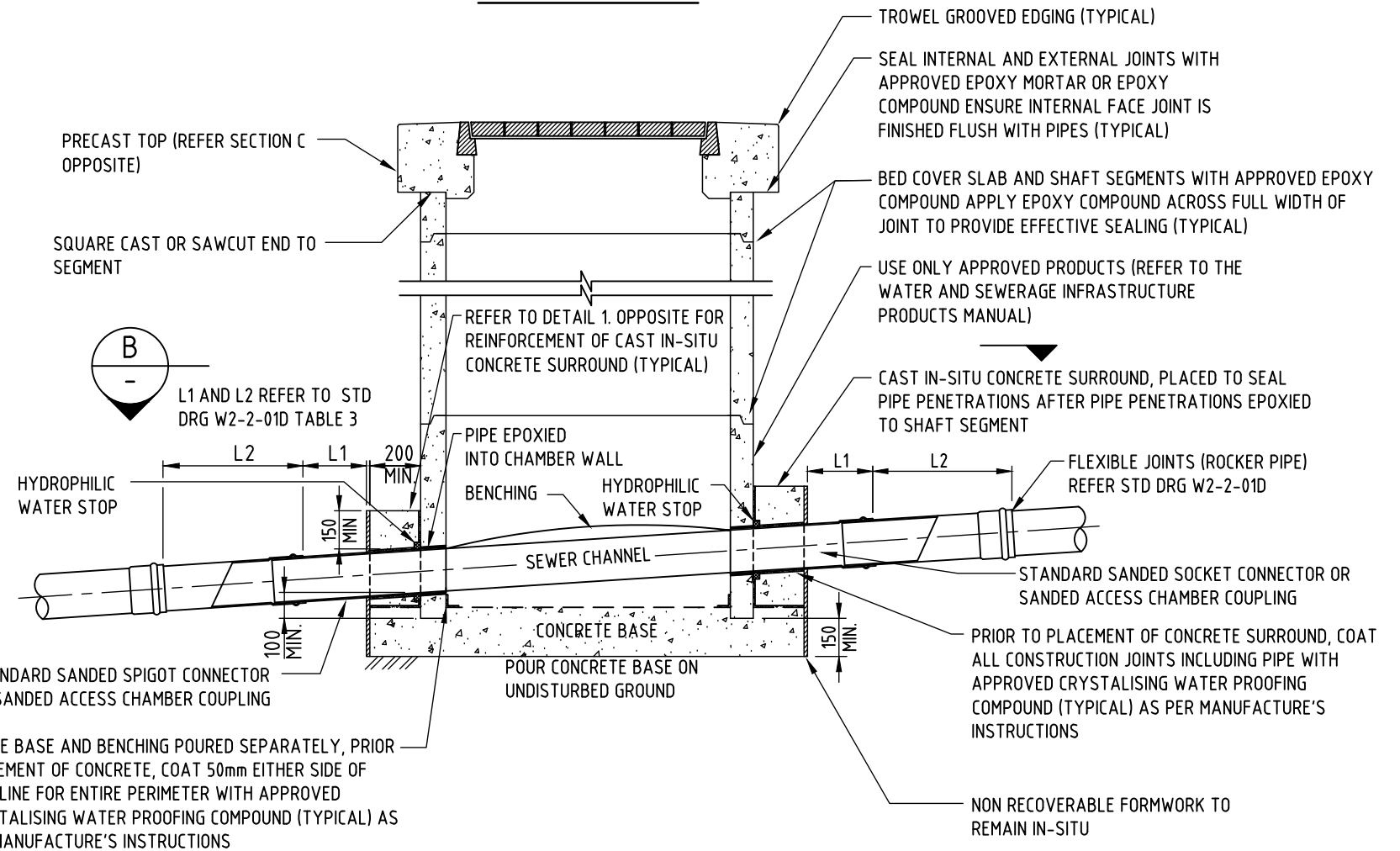
CLASS B COVER SIMILAR
DEPTH OF CONCRETE PRECAST TOP 250-300



DETAIL 1



**SECTION B
CHAMBER DETAILS**



SECTION A

NOTES:

1. REFER TO NOTES 1 - 15 ON STD DRG W2-2-01D.

7	WATERSTOPS & DRAWING NUMBER AMENDED.	J.W.	NOV '23	J.C.	D.C.
6	GENERAL AMENDMENTS 2018.	P.W.	SEPT '18	I.L.	D.C.
5	DRAWING REVISED.	A.W.	JUN '11	R.J.	J.P.
4	DRAWING REVISED.	RGI	AUG '08	R.J.	J.P.
3	GENERAL AMENDMENTS.	RGI	MAR '99	CSP	NWM
2	REDESIGNED AND REDRAWN FROM OLD DRG.	RGI	DEC '96	CSP	CHY
NO	DESCRIPTION	DRN	DATE	CKD	APPD
AMENDMENTS					



DES	C.PASCOE	SEWERAGE STANDARD DRAWING		
DRN	R.INNES	SEWER MAINS - ACCESS CHAMBERS		
CHK	C.PASCOE	PRECAST CHAMBERS		
APPD	H.YAU	(UP TO 6.0m DEEP WITH MAINS < DN450)		
SCALE	N.T.S.	A3	DRAWING NUMBER	W2-2-02A
ISSUED	07/10/96			7
ALL DIM. IN mm				
DRAFTING STANDARD TO A.S.1100		CAD PRODUCT - DO NOT AMEND MANUALLY		