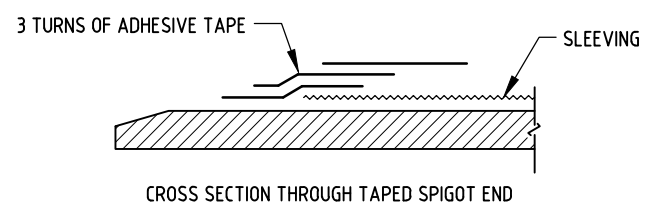
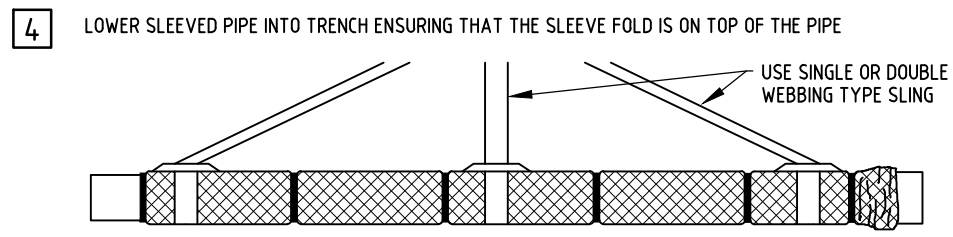
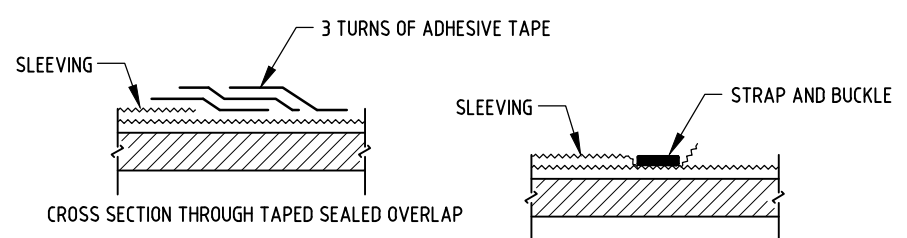
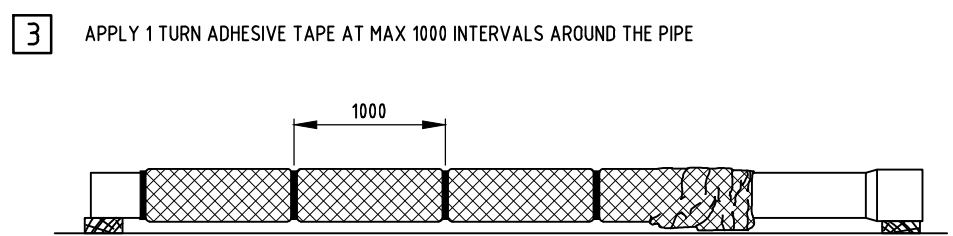
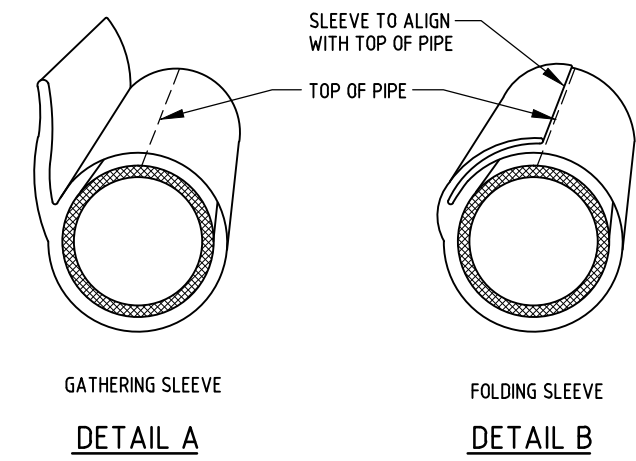
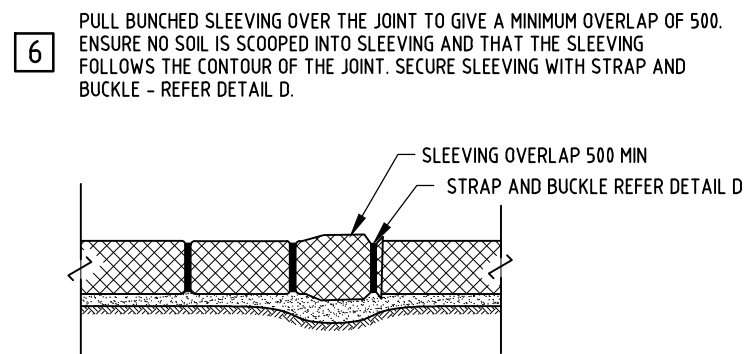
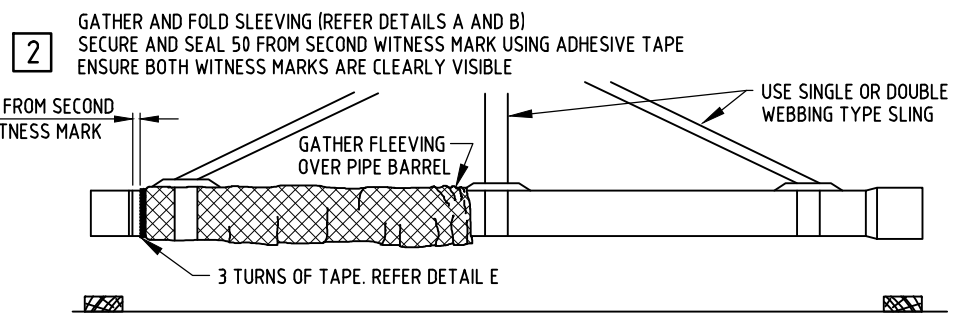


NOMINAL SIZE DN	SLEEVE WIDTH		NOMINAL SIZE DN	SLEEVE WIDTH	
	PIPES	FLANGED FITTINGS		PIPES	FLANGED FITTINGS
100	350	425	450	1100	1100
150	425	425	500	1100	1100
225	635	635	600	1270	1270
300	725	725	750	1500	1500
375	875	875			



NOTES:

- ALL DIMENSIONS ARE IN MILLIMETRES UNLESS NOTED OTHERWISE.
- CARE MUST BE TAKEN AT ALL TIMES TO ENSURE THAT THE SLEEVING IS NOT TORN OR DAMAGED. IN PARTICULAR, WRAPPED PIPES STORED ON TIMBER SLEDS MUST HAVE THE POLYETHYLENE SLEEVING DRAWN BACK SO THAT THE BARE PIPE RESTS ON THE SUPPORTS.
- POLYETHYLENE SLEEVING, ADHESIVE TAPE AND STRAP AND BUCKLE SHALL CONFORM TO AS 3680-1989.
- WHERE PIPES ARE USED IN BORED HOLES, THEY MUST BE WRAPPED WITH TWO COMPLETE LAYERS OF POLYETHYLENE SLEEVING.
- REPAIR OF DAMAGED SLEEVING,
 - A) ADHESIVE TAPE SHALL BE USED FOR HOLES OR TEARS SMALLER THAN WIDTH OF TAPE
 - B) ADHESIVE TAPE AND POLYETHYLENE SLEEVING SHALL BE USED FOR MODERATE DAMAGE WHERE CONDITIONS WILL ALLOW THE USE OF TAPE
 - C) POLYETHYLENE SHEET WITH STRAP AND BUCKLE SHALL BE USED FOR LARGE AREAS OF DAMAGE.
- FOLLOW STEPS OUTLINED IN NOTE 5 FOR IN-SITU REPAIRS. HOWEVER, CARE MUST BE TAKEN TO ENSURE THAT EXISTING POLYETHYLENE SLEEVING WITHIN 300MIN OF DAMAGED AREA IS CLEAN AND REPAIR IS COVERED WITH 100MIN OVERLAP AND SEALED CORRECTLY.
- FOR SLEEVING OF DUCTILE IRON FITTINGS, REFER TO STANDARD DRG NO W1-2-17B.
- DICL SEWERAGE RISING MAINS AND GRAVITY SEWERS SHALL BE PROTECTED IN ACCORDANCE WITH THIS STANDARD DRAWING.
- FOR DETAILS OF ALL CORROSION PROTECTION PRODUCTS USED ON THIS STANDARD DRAWING, REFER TO THE WATER AND SEWER MAINS PRODUCT MANUAL.

NO	DESCRIPTION	DRN	DATE	CKD	APPD
3	GENERAL AMENDMENTS 2021.	PW	DEC'21	JR	DC
2	REDRAWN IN AUTOCAD.	AW	OCT'18	JR	DC
1	NOTES AMENDED, TABLE CHANGED.	RGI	APR'07	RJ	JP
AMENDMENTS					



DES	NMC	WATER STANDARD DRAWING		
DRN	RI			
CHK	CP	MAINLAYING		
APPD	NMC			
SCALE	N.T.S.	APPLICATION OF POLYETHYLENE SLEEVING FOR CORROSION PROTECTION OF DICL PIPES		
ISSUED	MAR'97			
ALL DIM. IN mm		A3	DRAWING NUMBER	3
DRAFTING STANDARD TO A.S.1100		W1-2-17A		AMDT
				CAD PRODUCT - DO NOT AMEND MANUALLY