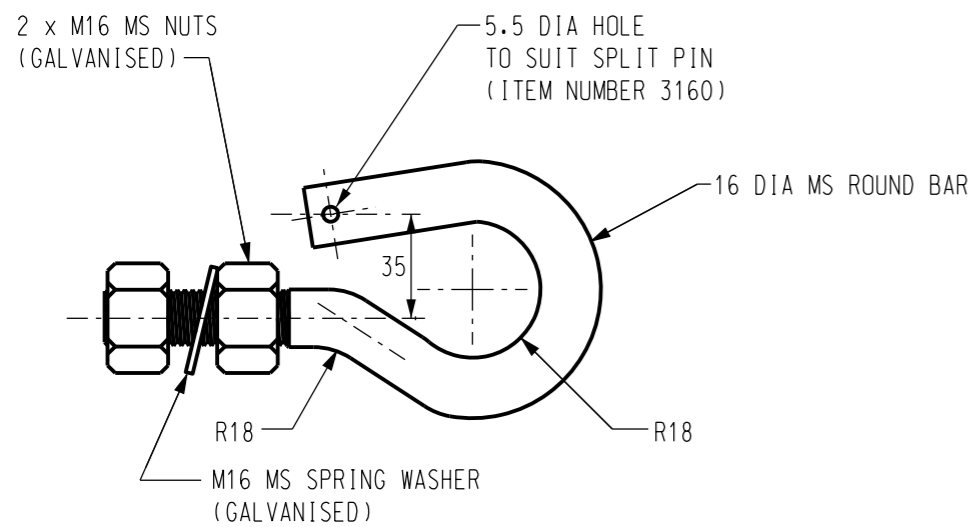
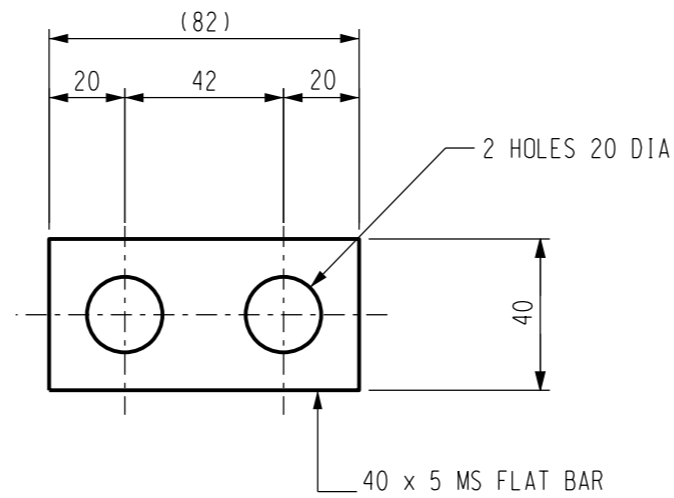


PLAN

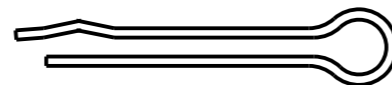


ELEVATION

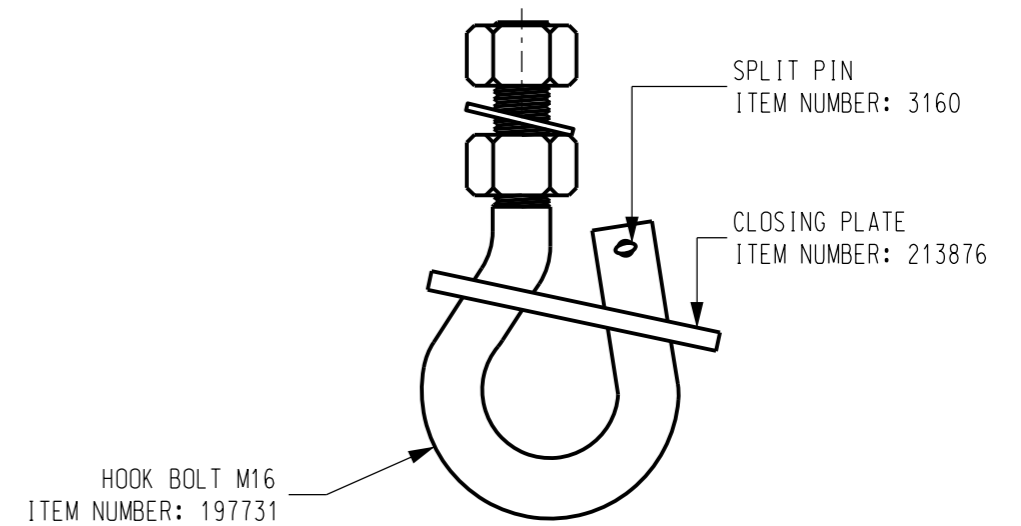
ITEM 1 - HOOK BOLT M16
(ITEM NUMBER - 197731)



ITEM 2 - CLOSING PLATE
(ITEM NUMBER - 213876)



ITEM 3 - SPLIT PIN
(ITEM NUMBER - 3160)



ITEM 4: HOOK BOLT M16 NON-BREAKAWAY ASSEMBLY

NOTES:

1. ALL WORKMANSHIP AND MATERIALS SHALL BE IN ACCORDANCE WITH AS 3678 & AS 3679.1.
2. ALL ROUGH OR BURRED EDGES ARE TO BE DRESSED CLEAN.
3. BOLTS TO BE METRIC, PROPERTY CLASS 4.6 AND SHALL BE IN ACCORDANCE WITH AS 1111.1.
4. CORROSION PROTECTION TO BE HOT DIPPED GALVANISING, WHEREBY COMPONENTS ARE TO BE EVEN AND FREE OF LUMPS AND BUILD-UP AND TRUE TO SHAPE AFTER GALVANISING. COMPONENTS WILL BE TESTED IN ACCORDANCE WITH AS 4680.
5. FOR ITEM 3 - SPLIT PIN, REFER TO STD DRG S01-01-04-02

NO	DESCRIPTION	DRN	DATE	CKD	APPD
5	ADDED ITEM 4 INFORMATION. FORMATTED TEXT. UPDATE AS REFERENCES IN NOTES 1, 3 & 4.	A.N.	AUG'21	A.N.	B.V.
4	TITLEBLOCK & DRAWING NUMBER FORMATTED	K.T.	DEC'19	C.C.	C.C.
3	TITLEBLOCK & DRAWING NUMBER UPDATE	C.C.	AUG'19	M.S.	C.C.
2	ITEM 1 : STOCK CODE CORRECTED	A.S.	JAN'06	-	C.C.
1	REDRAWN ON CAD	BJH	JUN'98	-	F.R.R.



DES	-	POWER STANDARD DRAWING		
DRN	g.mck/H.T.	LINE HARDWARE LV - ABC HOOK BOLT, CLOSING PLATE & SPLIT PIN		
CKD	G.Schubert			
APPD	B.T.KENT	A3	DRAWING NUMBER	S04-01-02-07
SCALE	1:2			
ISSUED	SEPT'89	DRAFTING STANDARD TO A.S.1100		
ALL DIM.	IN mm			
CAD PRODUCT - DO NOT AMEND MANUALLY		AMDT 5		