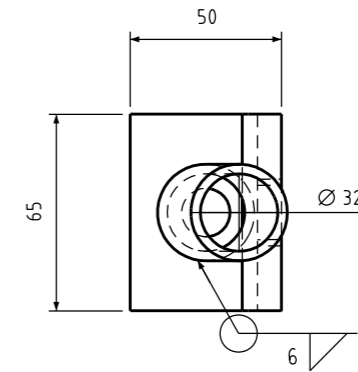


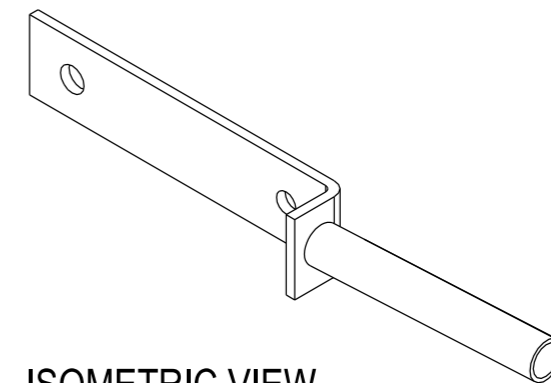
PLAN VIEW

1:2.5



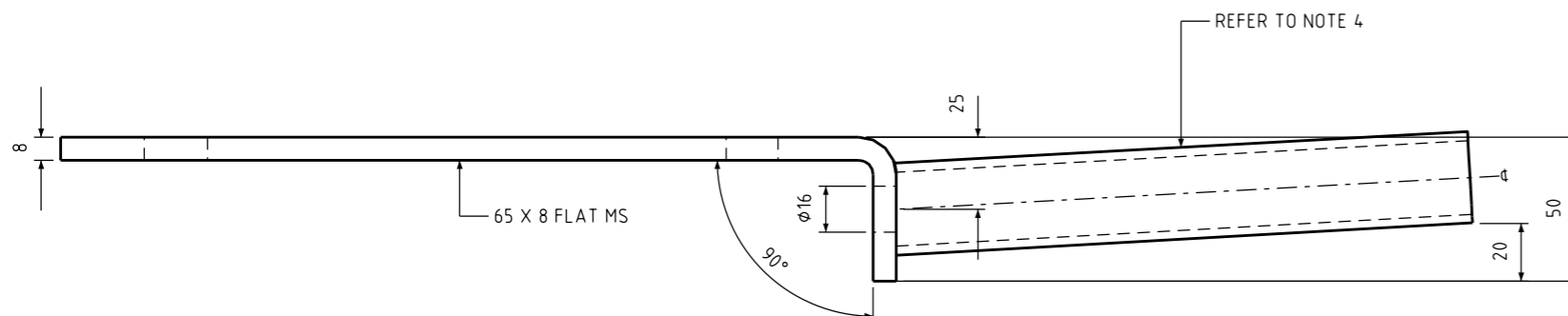
FRONT VIEW

1:2.5



ISOMETRIC VIEW

N.T.S.



SIDE VIEW

1:2.5

NOTES:

1. ALL WORKMANSHIP AND MATERIALS TO BE IN ACCORDANCE WITH AS 1204.
2. ALL WELDING AND WELD PREPARATION TO BE IN ACCORDANCE WITH AS 1554. FILLET WELDS TO BE 6mm U.N.O.
3. ALL ROUGH OR BURRED SURFACES TO BE DRESSED CLEAN.
4. AFTER FABRICATION AND CLEANING UP ALL COMPONENTS TO BE ACID DESCALED AND HOT DIPPED GALVANIZED.
5. OUTREACHES ARE TO CONFORM TO REQUIREMENTS OF AS 4100 AND AS 1798.
6. SPIGOT ANGLE SET FOR 5° UPCAST.
7. FOR LUMINAIRES 5kg
8. OUTREACH MOUNTING PLATE SHALL BE IN COMPLETE CONTACT WITH LV CROSSARM

ITEM 1 - LUMINAIRE OUTREACH (ITEM NUMBER - 288803)

2	TITLEBLOCK & DRAWING NUMBER FORMATTED	K.T.	FEB'19	C.C.	C.C.
1	NOTE 7 AMENDED & NOTE 8 ADDED	C.C.	NOV'18	B.V.	B.C.
0	ISSUED FOR CONSTRUCTION	R.I.	FEB'97	A.B.	F.R.R.
NO	DESCRIPTION	DRN	DATE	CKD	APPD
AMENDMENTS					



DES	R.HAIGH	POWER STANDARD DRAWING			
DRN	R.INNES	BRACKET LUMINAIRE OUTREACH (MAXI) LV CROSSARM			
CKD	A.B.				
APPD	F.R.R.				
SCALE	AS SHOWN				
ISSUED	FEB 1997	A3	DRAWING NUMBER	S03-01-03-10	
ALL DIM.	IN mm			AMDT	
DRAFTING STANDARD TO A.S.1100			CAD PRODUCT - DO NOT AMEND MANUALLY		