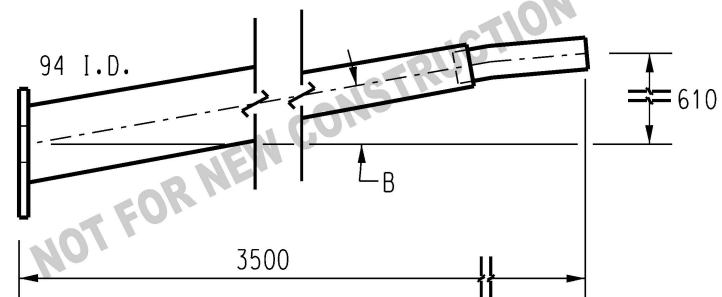
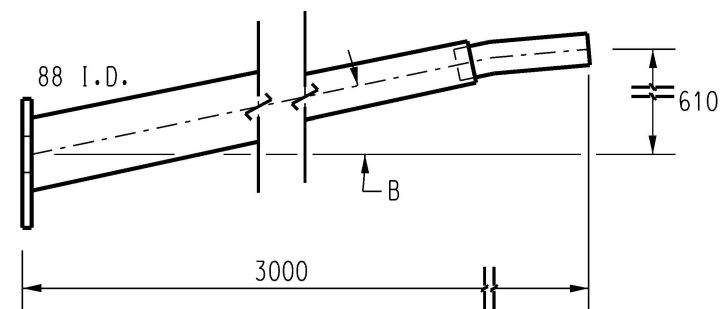


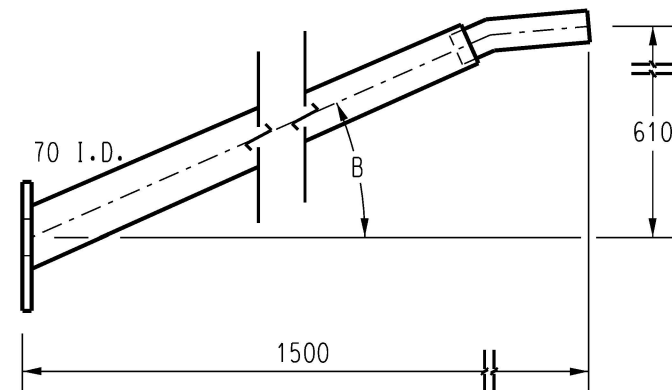
ITEM 1 SCALE 1:10



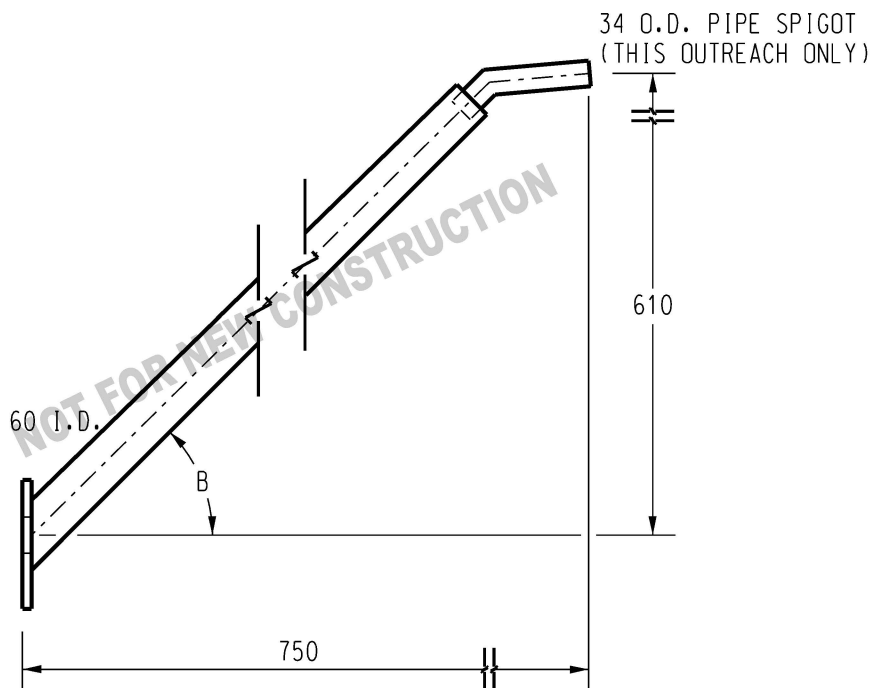
ITEM 2 SCALE 1:10



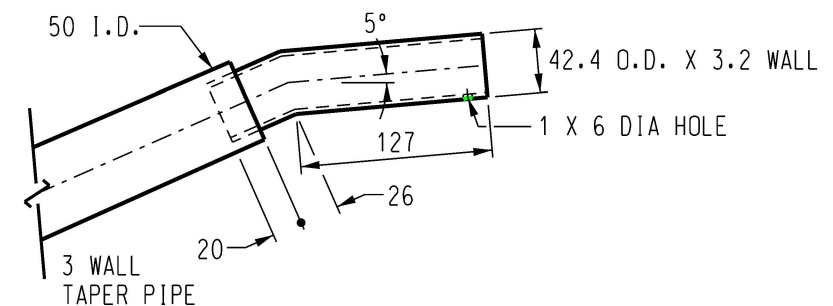
ITEM 3 SCALE 1:10



ITEM 4 SCALE 1:10



ITEM 5 SCALE 1:10

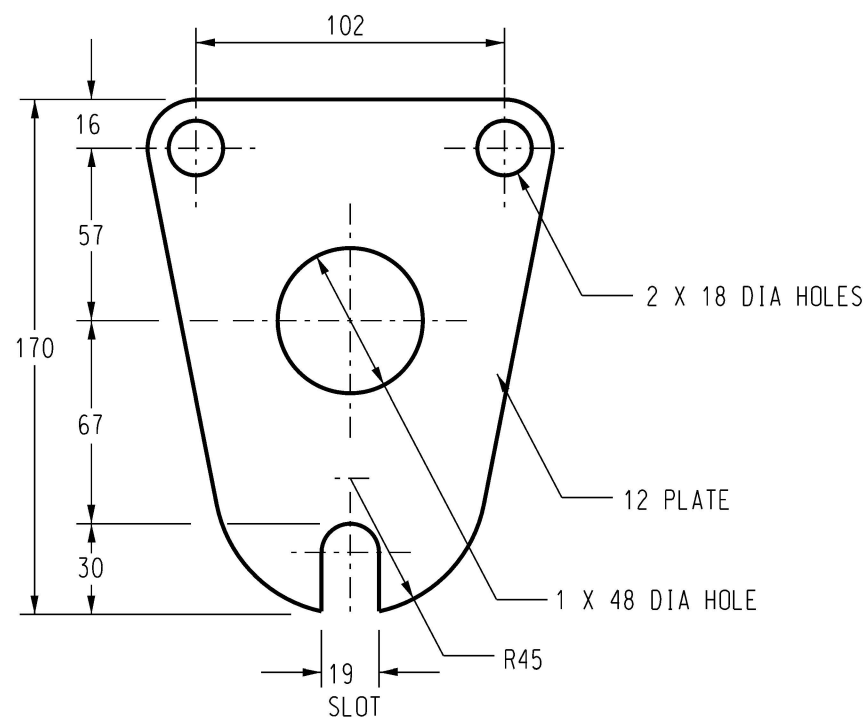


TYPICAL SPIGOT DETAIL

SCALE 1:5

NOTES:

1. ALL WELDING AND WELD PREPARATION SHALL BE IN ACCORDANCE WITH AS1554.
2. CIRCUMFERENTIAL WELDS TO BE FILLET. LONGITUDINAL WELDS TO BE SINGLE BUTT TYPE. LONGITUDINAL WELDS TO BE MADE BY CONTINUOUS AUTOMATIC PROCESS AND ARE NOT TO BE DRESSED SMOOTH.
3. AFTER FABRICATION ALL COMPONENTS TO BE ACID DESCALED AND HOT DIPPED GALVANIZED TO AS4680.
4. WIND LOADINGS TO COMPLY WITH THE REQUIREMENTS OF AS1170 PART 2, i.e. REGION C AND TERRAIN CATEGORY 2. DESIGN TO BE BASED ON LUMINARIES WITH A WIND AREA OF 0.13sq.m, A MASS OF 12kg.
5. OUTREACHES ARE TO CONFORM TO THE REQUIREMENTS OF AS4100 AND AS1798.
6. OUTREACHES ARE TO HAVE CONTINUOUS TAPER OVER THEIR ENTIRE LENGTH.
7. OUTREACHES OF A SHARP PRISMATIC SHAPE, i.e. POLYGONAL WILL NOT BE CONSIDERED DUE TO THEIR INCREASED DRAG COEFFICIENT.
8. ALL OUTREACH MANUFACTURERS SHALL COMPLY WITH ISO 3834.



MOUNTING FLANGE DETAIL

SCALE 1:2.5

OUTREACH DESCRIPTION					
ITEM	SPIGOT SIZE	ITEM NUMBER	LANTERN MOUNTING HEIGHT	NOMINAL LENGTH 'A'	UPLIFT ANGLE 'B'
1	42mm	6684	12m	4.5m	9°
2	42mm	228536	12m	3.5m	10°
3	42mm	6700	12m	3.0m	12°
4	42mm	10801	9m or 12m	1.5m	24°
5	34mm	287607	10.5m	0.75m	45°

11	NOTES 2 & 4 AMENDED. ITEMS 2 & 5 CHANGED TO NOT FOR NEW CONSTRUCTION.
10	NOTES 3 & 4 AMENDED.
9	TITLEBLOCK & DRAWING NUMBER FORMATTED
8	GALVANIZING STANDARD UPDATED TO AS4680 NOTE 8 ADDED
7	NEW OUTREACH, CHANGE TO MOUNTING FLANGE
6	NOTE 4 AMENDED TO INCLUDE DRAG CO-EFFICIENT. NOTE 7 ADDED.
5	REDRAWN. NOTE 4 AMENDED TO SUIT NEW WIND LOADING CODE

NO	DESCRIPTION
	AMENDMENTS

P.BH.	MAR'23	B.C.	B.V.
P.BH.	JAN'23	B.C.	B.V.
K.T.	FEB'19	C.C.	C.C.
A.T.	JAN'13	B.C.	B.C.
RGI	SEP96	MWB	PJD
GMCK	SEP91	...	PMC
GMCK	FEB91	...	NS

DRN	DATE	CKD	APPD

PowerWater
NORTHERN TERRITORY

DES	...
DRN	R. INNES
CKD	M. BOCK
APPD	P. DEWAR
SCALE	1:5
ISSUED	FEB'91
ALL DIM. IN mm	
DRAFTING STANDARD TO A.S.1100	

POWER STANDARD DRAWING

**OUTREACH
TAPERED STEEL**
0.75, 1.5, 3.0, 3.5 & 4.5 metre

A3 **DRAWING NUMBER** **S03-01-01-10**

11
AMDT

CAD PRODUCT - DO NOT AMEND MANUALLY