

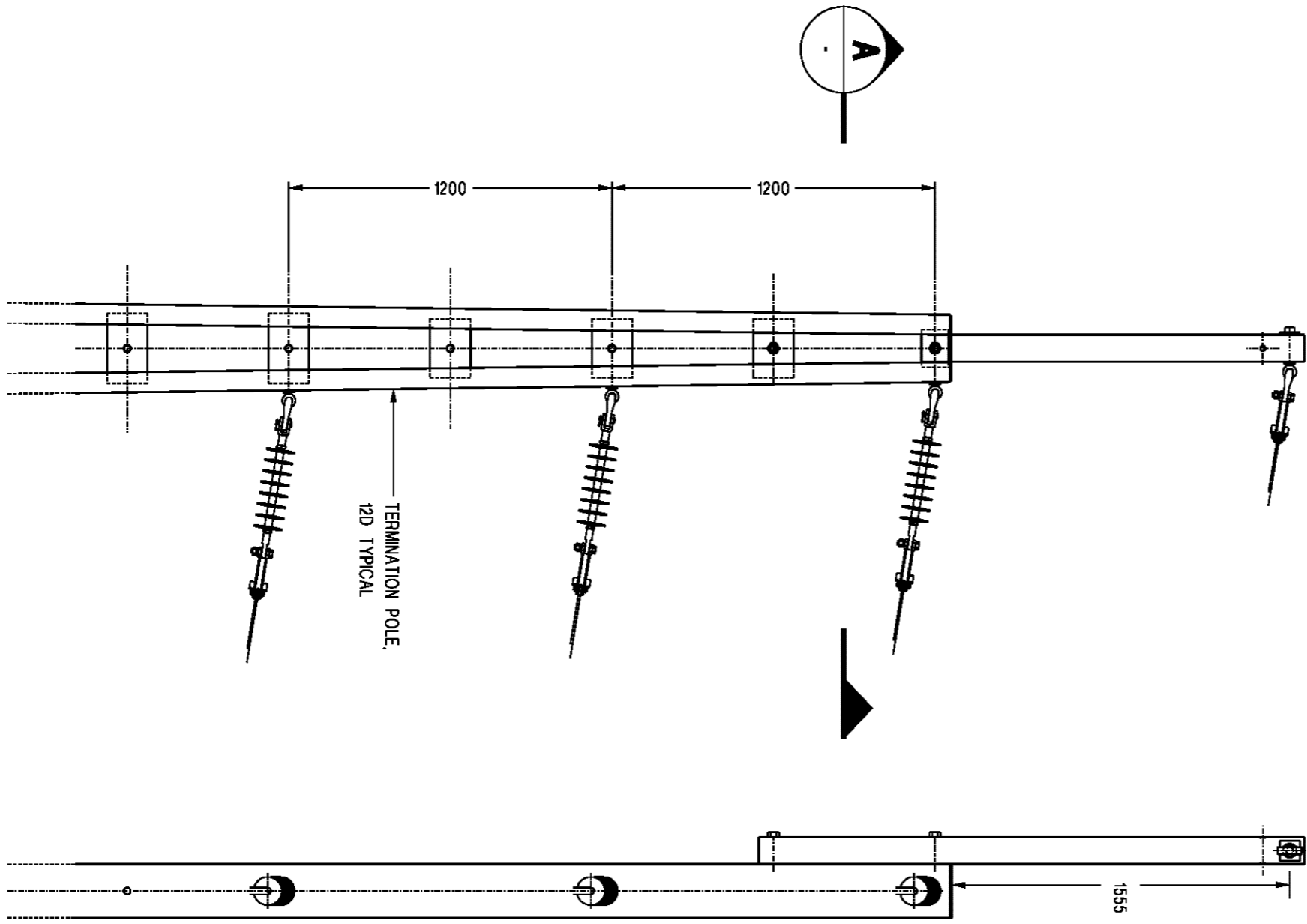
REFER DRG S01-01-02-13
FOR RISER DETAILS

SECTION A

AERIAL RISER TO POLE 2 OFF CONNECTIONS,
USE M24 BOLT 160 LONG, 2 x LARGE FLAT WASHERS,
SPRING WASHER AND M24 NUT.
ALLOW EXTRA THREE WASHERS BETWEEN
POLE BRACE AND RISER AT BOTH CONNECTIONS.

ALUMINIUM ANGLE CLAMP ITEM NUMBER: 298760
FOR SIZE 7/2.75;
ITEM NUMBER: 298778
FOR SIZE 7/3.75 - 7/4.75

FOR TERMINATIONS USE M24 BOLT 50 LONG (3 OFF),
2 x LARGE FLAT WASHERS (3 OFF),
SPRING WASHER AND M24 EYE NUT (18KN)
(3 OFF)



END ELEVATION

ELEVATION

| NO | DESCRIPTION | DRN | DATE | CKD | APPD |
|------------|--|------|--------|------|--------|
| 1 | TITLEBLOCK & DRAWING NUMBERS FORMATTED | K.T. | DEC'18 | C.C. | C.C. |
| 0 | ISSUED FOR CONSTRUCTION | A.S. | 7.3.01 | M.B. | F.R.R. |
| AMENDMENTS | | | | | |



| | |
|-------------------------------|-----------|
| DES | M. BOCK |
| DRN | A. SCHMID |
| CKD | M. BOCK |
| APPD | F. ROBSON |
| SCALE | 1:20 |
| ISSUED | MARCH '01 |
| ALL DIM. | IN mm |
| DRAFTING STANDARD TO A.S.1100 | |

| | |
|--|--------------------------------|
| POWER STANDARD DRAWING | |
| POLE TOP UNITS VERTICAL ANGLE FOR UNIVERSALL POLE CONSTRUCTION | |
| A3 | DRAWING NUMBER S01-02-01-25 |
| CAD PRODUCT - DO NOT AMEND MANUALLY | |

