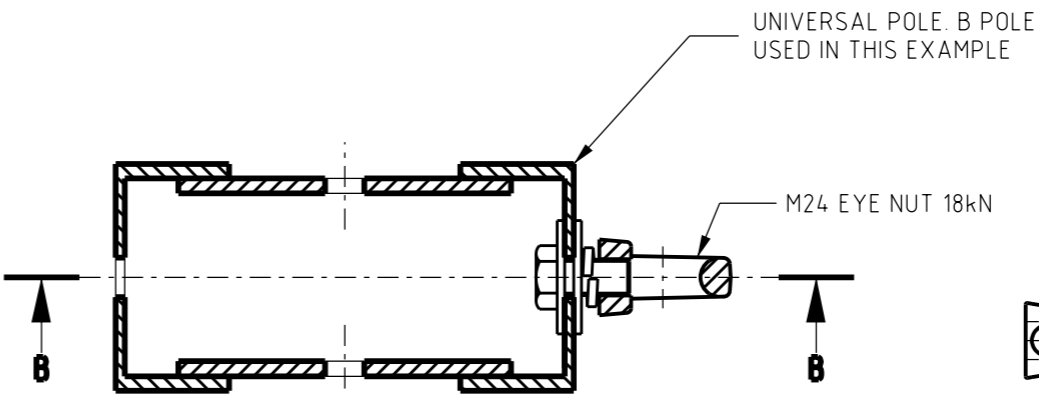
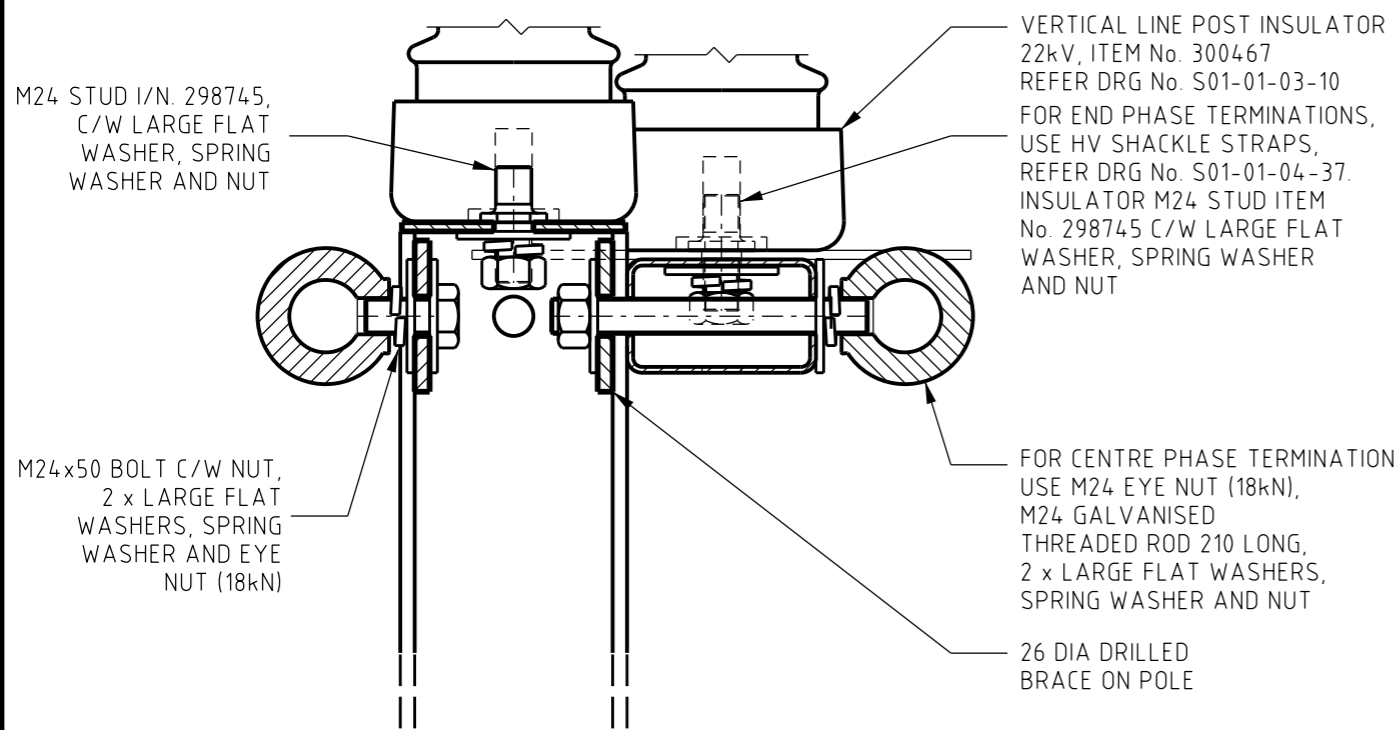
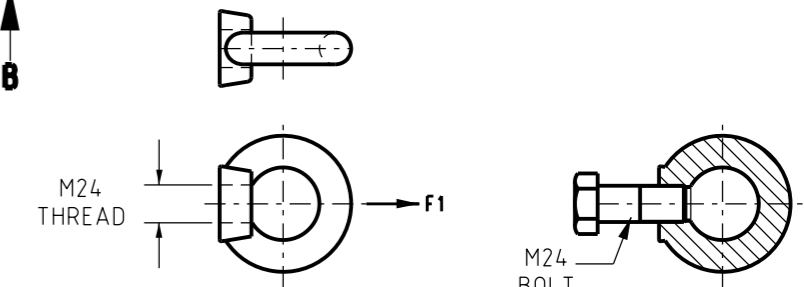
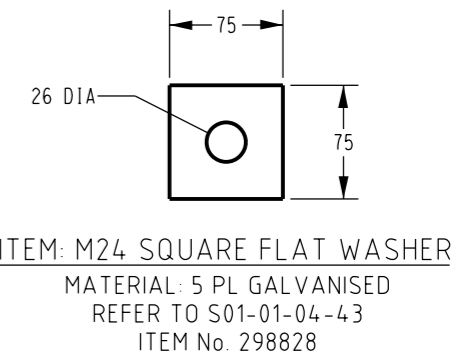


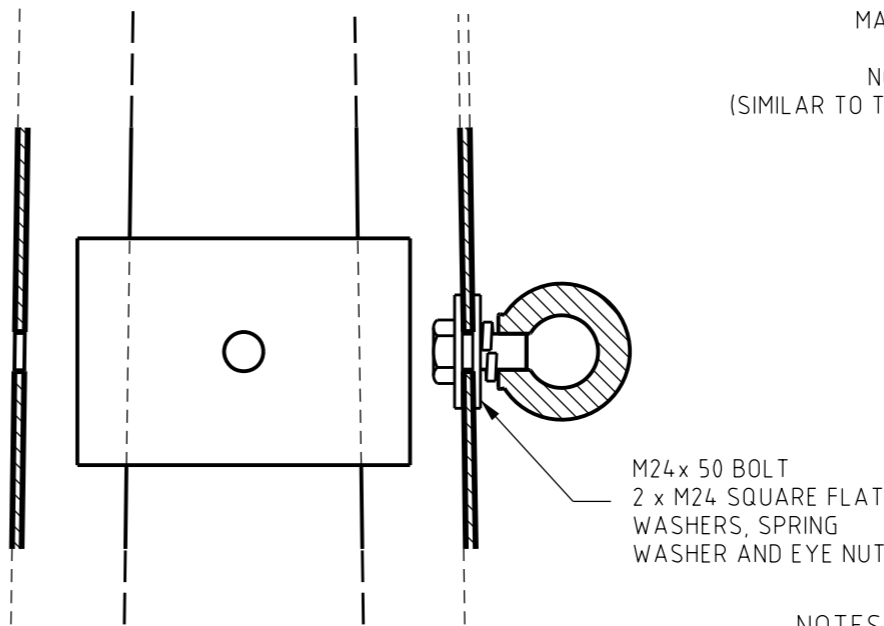
PLAN SECTION WITH HV TERMINATION CROSSARM



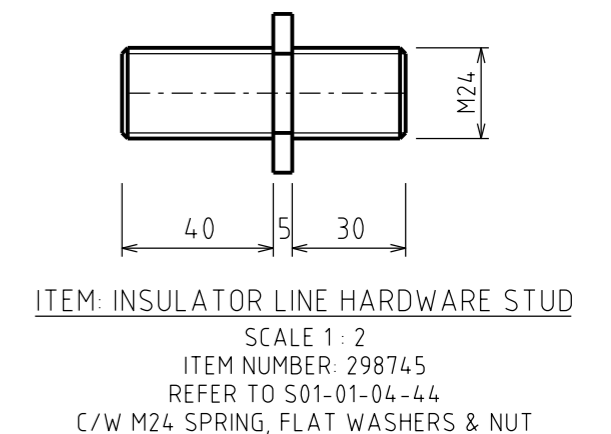
PLAN SECTION



SECTION A
WITH HV TERMINATION CROSSARM
DETAIL SHOWING TYPICAL ARRANGEMENT OF EYE NUT FOR TERMINATION ON WEAK SIDE OF POLE



SECTION B
DETAIL SHOWING TYPICAL ARRANGEMENT OF EYE NUT FOR TERMINATION ON STRONG OF POLE



NOTES:

1. LENGTH OF BOLT IS DESIGNED TO HAVE FULL THREAD CONTACT WITH EYE NUT, WITHOUT PROTRUSION INTO EYE.
2. REFER TO S01-01-04-43 FOR BOLTS, NUTS, WASHERS AND THREADED RODS

NO	DESCRIPTION	DRN	DATE	CKD	APPD
4	REFORMATTED TEXT. ADDED NOTE 2 & EYE NUT DETAIL. ADDED 'ITEM' PREFIX TO ITEM LABELS. CHANGED TITLE.	A.N.	AUG'21	C.C.C.	B.V.
3	UPDATED INSULATOR ITEM NUMBER.	C.C.	MAY'21	B.V.	B.C.
2	DRAWING FORMATTED.	H.E.	DEC'20	H.E.	B.V.
1	STUD STOCK CODE AND DRAWING REFERENCE ADDED	A.S.	MAR'02	M.B.	F.R.R.
0	ISSUED FOR CONSTRUCTION	A.S.	MAR'01	M.B.	F.R.R.



DES	M. BOCK	POWER STANDARD DRAWING		
DRN	R. INNES	LINE HARDWARE EYE NUTS FOR TERMINATION TYPICAL TERMINATION DETAILS		
CKD	M. BOCK			
APPD	F. ROBSON			
SCALE	JULY'00			
ISSUED	1:5	A3	DRAWING NUMBER	S01-01-04-41
ALL DIM.	IN mm			
DRAFTING STANDARD TO A.S.1100		CAD PRODUCT - DO NOT AMEND MANUALLY		AMDT