

NOTES FOR CONSTRUCTION OF A NEW WATER SERVICE

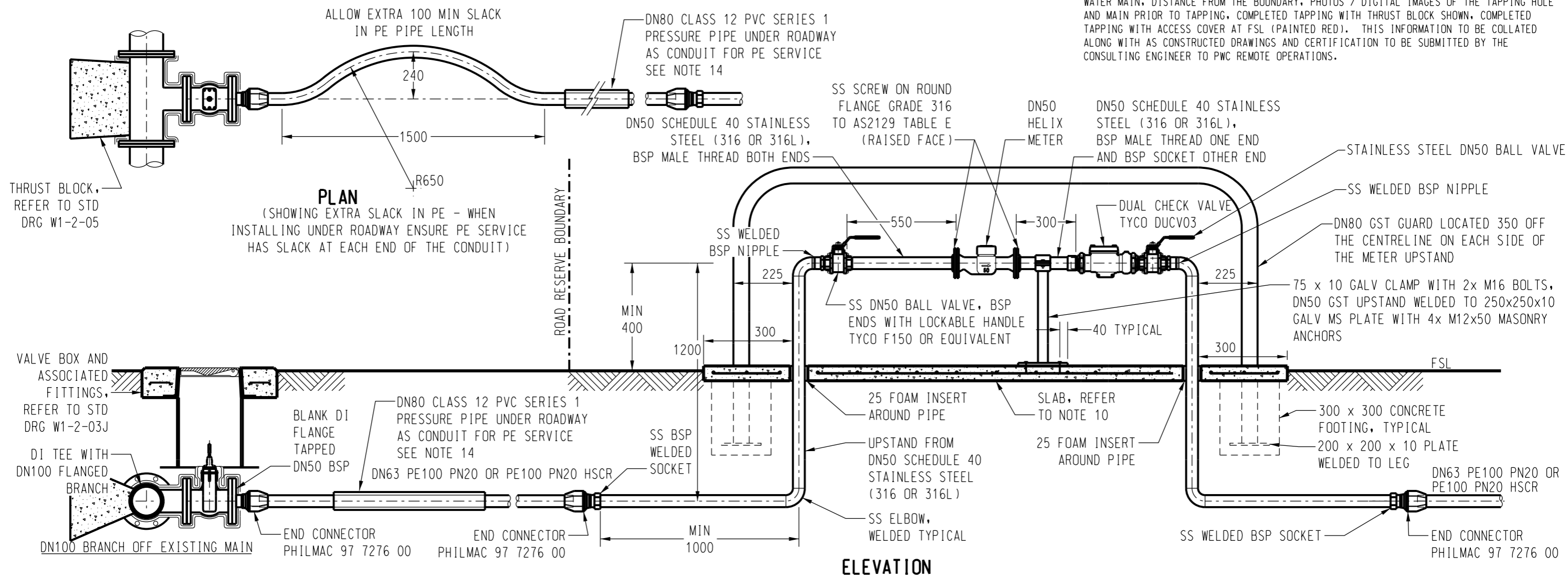
1. INSTALLATION OF TAPPING OR DN100 TEE TO BE SUPERVISED BY POWER AND WATER PERSONNEL. ALL FITTINGS AND PIPE WORK TO BE SUPPLIED AND INSTALLED BY THE CONTRACTOR.
2. ANY CHANGES FROM THIS DRAWING, REQUIRED OR DESIRED DURING THE CONSTRUCTION PHASE MUST BE AUTHORISED BY THE PWC REMOTE OPERATIONS PLANNING OFFICER.
3. SEVEN DAYS CLEAR WRITTEN NOTICE FROM THE CONTRACTOR TO BE GIVEN TO PWC REMOTE OPERATIONS PLANNING WITH A "NOTICE OF INTENTION TO START WORK" AND PROPOSED DATE FOR INSPECTION AND HANDOVER.
4. THE LICENSED CONTRACTOR TO CONTACT PWC REMOTE OPERATIONS PLANNING SECTION TO ARRANGE HANDOVER INSPECTIONS.
5. NO WORK ON POWER AND WATER CONNECTIONS MAY COMMENCE UNTIL CONTRACTOR HAS POWER AND WATER APPROVED COPIES OF THE SITE SERVICES PLAN AND "WATER AND SEWER CONNECTION APPLICATION FORM - REMOTE OPERATIONS" PAID ALL FEES.

6. ONLY CONTRACTORS AUTHORISED BY POWER AND WATER ARE PERMITTED TO TAP EXISTING IN-SERVICE (LIVE) MAINS OR MAINS THAT HAVE BEEN HYDROSTATICALLY TESTED. THE CONTRACTOR SHALL SUPPLY ALL MATERIAL AND UNDERTAKE THE INSTALLATION INCLUDING EXCAVATIONS, BACKFILLING AND REINSTATEMENT. THE WATER METER WILL BE SUPPLIED BY REMOTE OPERATIONS.
7. THE CONSULTANT TO SUBMIT TO PWC A COPY OF FIELD RETURNS OF ALL TEST AND MEASUREMENTS, SHOWING THE LOCATION OF THE WATER CONNECTION. ALL "AS CONSTRUCTED" DRAWINGS ARE TO BE CERTIFIED BY THE CONSTRUCTION ENGINEER AS TO THEIR ACCURACY. AS CONSTRUCTED DRAWINGS TO BE LODGED WITH PWC BY THE CONSULTANT PRIOR TO HANDOVER, AND TO INCLUDE ALL TEST CERTIFICATES.
8. CONNECTION TO THE EXISTING WATER MAIN WILL ONLY BE CARRIED OUT WHEN ALL OF THE WORKS UPSTREAM OF THE CONNECTION ARE COMPLETE, EG HYDRO-STATIC TEST, AS CONSTRUCTED PHOTOGRAPHS RECEIVED IN ACCORDANCE WITH THE APPROVED DESIGN DRAWINGS, HAVE SATISFACTORILY PASSED FINAL HANDOVER INSPECTION AND "AS CONSTRUCTED" DRAWINGS HAVE BEEN PROVIDED TO THE PWC REMOTE OPERATIONS PLANNING SECTION.
9. THRUST BLOCKS TO BE INSTALLED AS PER STANDARD DRAWING W1-2-05.
10. ALL GIBAULT JOINTS AND DUCTILE IRON VALVES AND FITTINGS BELOW GROUND TO BE PROTECTED BY POLYETHYLENE SLEEVING AS PER STANDARD DRAWING W1-2-17B.

11. 1000 WIDE CONCRETE SLAB UNDER METER ASSEMBLY TO BE 75 THICKNESS WITH SL72 MESH CENTRALLY POSITIONED IN SLAB. ENSURE A MINIMUM 200mm THICK BASE FOR CONCRETE SLAB IS COMPACTED 95% MMDD.
12. CONCRETE SURROUND OVER SLUICE VALVE TO BE 1500 x 1000 x 150, REFER TO PWC STANDARD DRAWING W1-2-03D.
13. TAG AND VALVE DESCRIPTION ATTACHED TO INSIDE COVER ON SLUICE VALVE BOX.
14. PE100 POLYETHYLENE PIPE IN BLACK WITH BLUE STRIPES TO AS4130.
15. PE SERVICE PIPE IS TO BE INSTALLED AS A CONTINUOUS LENGTH OF PIPE WITH NO JOINS.

GENERAL NOTES

1. THE CONTRACTOR IS TO OBTAIN ALL NECESSARY APPROVALS, ROAD OPENING PERMITS AND PAY ALL FEES PRIOR TO COMMENCEMENT OF ANY WORKS.
2. CONSTRUCTION MAY NOT COMMENCE UNTIL THE HYDRAULIC DRAWINGS HAVE BEEN ACCEPTED FOR CONSTRUCTION BY THE PWC REMOTE OPERATIONS PLANNING BRANCH.
3. INSPECTIONS WILL BE CARRIED OUT BY PWC OR ITS AGENT.
4. THE CONTRACTOR SHALL SUPPLY AS CONSTRUCTED DRAWINGS INDICATING THE DEPTH OF THE WATER MAIN, DISTANCE FROM THE BOUNDARY, PHOTOS / DIGITAL IMAGES OF THE TAPPING HOLE AND MAIN PRIOR TO TAPPING, COMPLETED TAPPING WITH THRUST BLOCK SHOWN, COMPLETED TAPPING WITH ACCESS COVER AT FSL (PAINTED RED). THIS INFORMATION TO BE COLLATED ALONG WITH AS CONSTRUCTED DRAWINGS AND CERTIFICATION TO BE SUBMITTED BY THE CONSULTING ENGINEER TO PWC REMOTE OPERATIONS.



DIGITAL HORIZONS
 GPO Box 3
 DARWIN, NT 0801
 PH: 08 8981 8788
 FX: 08 8942 1400
 info@digitalhorizons.com.au
 DH11-3361

NO	DESCRIPTION	DRN	DATE	CKD	APPD
1	PE CLASS CHANGED	AW	3/03/20	J.R	J.R
0	NEW-ISSUED FOR PWC	K.I.	24/1/12	R.H.	PWC.
AMENDMENTS					



DES	R.HUITCHINS
DRN	K.IBBOTT
CKD	R.HUITCHINS
APPD	PWC
SCALE	1:20
ISSUED	JAN'12
ALL DIM.	IN mm
DRAFTING STANDARD TO	A.S.1100

REMOTE OPERATIONS SERVICES		A3	DRAWING NUMBER	ROW1-1-350	
DN50 ABOVE GROUND METER					
POLYETHYLENE - STAINLESS STEEL					
WATER SERVICE CORROSIVE CONDITIONS					
		CAD PRODUCT - DO NOT AMEND MANUALLY			