

POWER AND WATER CORPORATION

get prepped for
the wet/summer

Your guide to staying
safe and being prepared
this wet season/summer

PowerWater



CHLOE TEAKLE
Power and Water Corporation

“For outage information
follow PowerWaterCorp
on Twitter or access the
feed on our website.”

FELINO MOLINA
Power and Water Corporation



BEWARE OF THE HIDDEN POWER

Most electrical appliances use power even if they are not being used. This 'standby' power costs you money.

To reduce your power bill and save money, turn appliances off at the wall when they are not being used.

Keep your air conditioners' thermostat between 24°C and 27°C and turn the fan on. The fan will circulate the air and reduce humidity, helping you stay cool and use less power.

For more ideas on reducing your power use and saving money, go to powerwater.com.au/save and try our Virtual Energy and Home Water Audit.

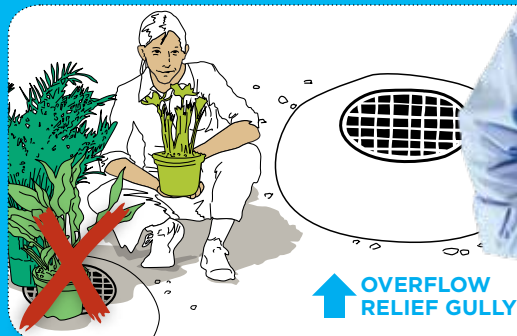
It's easy to forget to turn off your sprinklers or irrigation when it's raining. However, leaving them on is a serious waste of water. Don't waste water this wet/summer, make sure your sprinklers and irrigation are turned off when it rains.

BE WATER WISE IN THE WET/SUMMER

To find out how to be water wise in your garden, pick up a copy of our water wise garden booklet or save paper and read it online at powerwater.com.au

“Check that your ORG is free of obstructions on top of it or water running into it. It could save you a lot of trouble.”

DAVID GEORGE
Power and Water Corporation





“If there’s a power outage, wait 15 minutes before calling, chances are we’re already on the way.”

PETER McBAIN
Power and Water Corporation

DID YOU KNOW THAT
ONE LIGHTNING BOLT BURNS AS HOT AS THE SURFACE OF THE SUN?

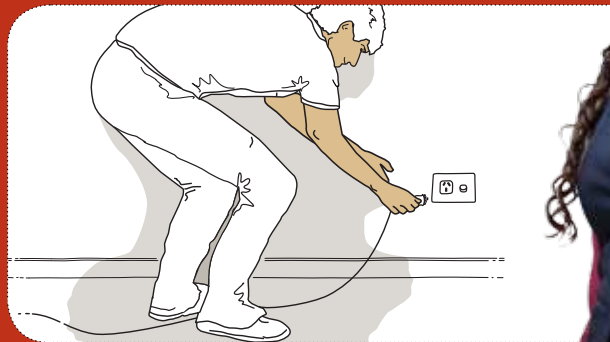
That’s serious power and when a lightning bolt hits a powerline, extensive damage can be done.

With more than 30,000 lightning strikes a year, there’s a good chance we’ll experience a power outage or two during this year’s wet season.

For more information on how to save power and water, visit powerwater.com.au/save or go to helpsavetheplanet.com.au

“When a storm is approaching, unplug your appliances from the wall. It’s the safest way to keep them from being damaged in a power surge.”

HERMINIA CASTLE
Power and Water Corporation



Need more information?

Customer Service Centres

Darwin

Shop 28, Ground Floor, Mitchell Centre
55 Mitchell Street, Darwin

Palmerston

Shop 21, Palmerston Shopping Centre
10 Temple Terrace, Palmerston

Katherine

Ground Floor, Government Centre
5 First Street, Katherine

Tennant Creek

Ground Floor, Government Centre
Peko Road, Tennant Creek

Alice Springs

Shop 8, Alice Plaza
36 Todd Mall, Alice Springs

Phone

General enquiries 1800 245 092
Emergencies 1800 245 090

Website

powerwater.com.au



Twitter

Live feed on powerwater.com.au
Follow **PowerWaterCorp** on Twitter

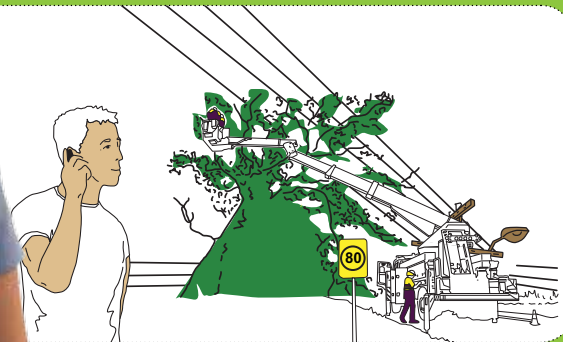
Printed on 100% recycled stock with soy based inks.

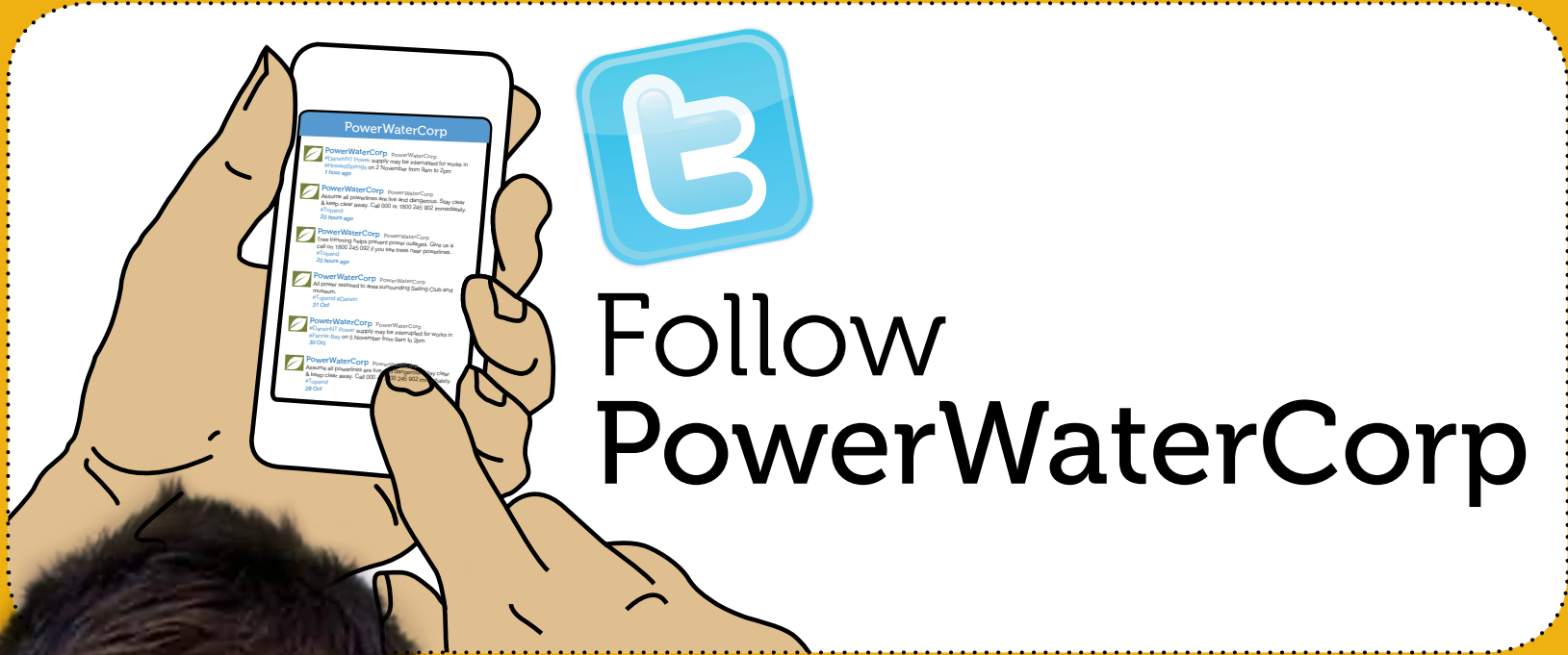
PowerWater



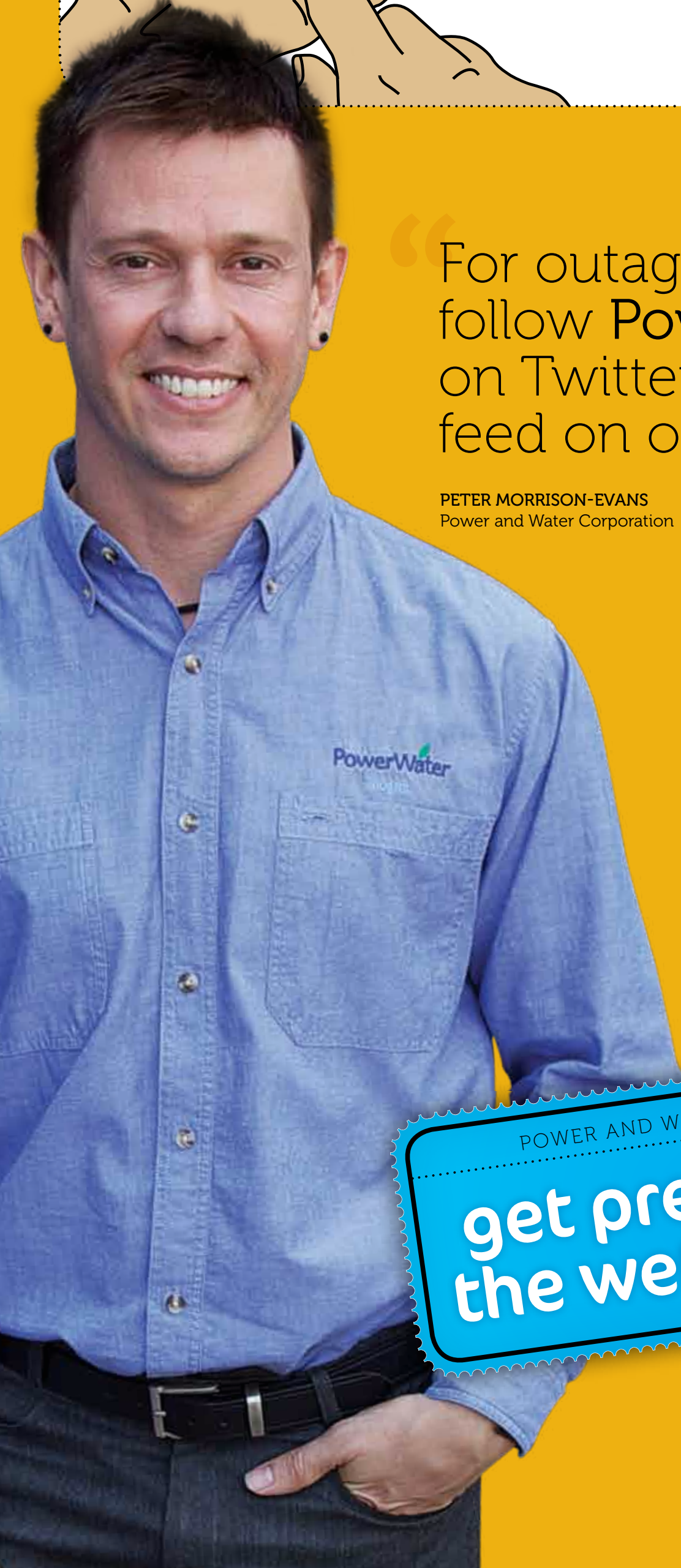
“If you see trees close to or touching powerlines call 1800 245 092. Do not attempt to trim them.”

BRITTANY VAN HEUGTEN
Power and Water Corporation





Follow PowerWaterCorp



“For outage information follow PowerWaterCorp on Twitter or access the feed on our website.”

PETER MORRISON-EVANS
Power and Water Corporation

For more information about getting prepped for the wet/summer visit our storm and cyclone centre at powerwater.com.au

POWER AND WATER CORPORATION
get prepped for the wet/summer

CHECK LIST

- ✓ Check trees are not close to or touching powerlines. If they are, call 1800 245 092. Don't trim them yourself.
- ✓ Check that your overflow relief gully (ORG) is clear of things covering the top of it or water running into it.
- ✓ Don't touch fallen powerlines, keep others away and immediately call our emergency line on 1800 245 090.
- ✓ Turn off irrigation and sprinklers when it rains.
- ✓ Unplug appliances when an electrical storm is approaching.
- ✓ Keep a torch handy in case of power outages during storms.
- ✓ Keep a radio and spare batteries.
- ✓ Appliance protection equipment such as UPS and surge protectors are available, but unplugging is the best protection against electrical storm surges.
- ✓ If there's a power outage, wait 15 minutes before calling, chances are we're already on the way.
- ✓ Check air conditioner filters are clean and make sure rooms are well sealed.
- ✓ Check air conditioner is set between 24°C and 27°C and use a fan to circulate the cool air.