

MINIMUM BLOCK THRUST AREA m² - TABLES

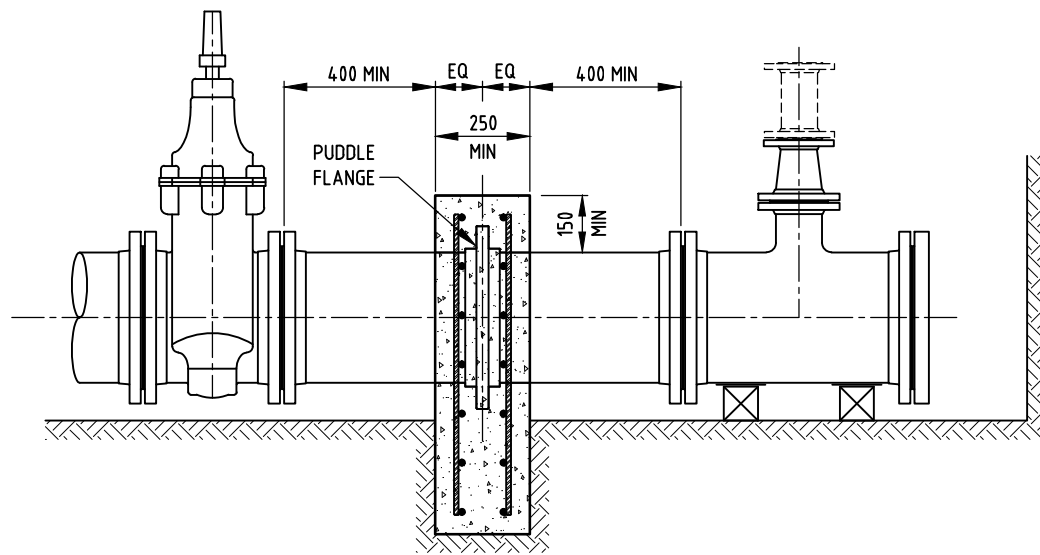
REFER TO W1-2-05A FOR NOTES AND OTHER DETAILS

		BENDS, VALVES, TEES & DEAD ENDS														
		90° & 60° HORIZONTAL BENDS			45° & 30° HORIZONTAL BENDS			22.5° HORIZONTAL BENDS			11.25° HORIZONTAL BENDS			VALVES, TEES & DEAD ENDS		
TEST PRESSURE	DN \ AHBP	50kPa	100kPa	200kPa	50kPa	100kPa	200kPa	50kPa	100kPa	200kPa	50kPa	100kPa	200kPa	50kPa	100kPa	200kPa
1000kPa	DN150	0.84	0.42	0.21	0.46	0.23	0.11	0.23	0.12	0.06	0.12	0.06	0.03	0.60	0.30	0.15
	DN200	1.45	0.72	0.36	0.78	0.39	0.20	0.40	0.20	0.10	0.20	0.10	0.05	1.02	0.51	0.26
	DN225	1.80	0.90	0.45	0.98	0.49	0.24	0.50	0.25	0.12	0.25	0.12	0.06	1.27	0.64	0.32
	DN250	2.20	1.10	0.55	1.19	0.59	0.30	0.61	0.30	0.15	0.30	0.15	0.08	1.55	0.78	0.39
	DN300	3.20	1.60	0.80	1.73	0.87	0.43	0.88	0.44	0.22	0.44	0.22	0.11	2.26	1.13	0.57
1200kPa	DN375	5.32	2.66	1.33	2.88	1.44	0.72	1.47	0.73	0.37	0.74	0.37	0.18	3.76	1.88	0.94
	DN450	7.54	3.77	1.88	4.08	2.04	1.02	2.08	1.04	0.52	1.04	0.52	0.26	5.33	2.66	1.33

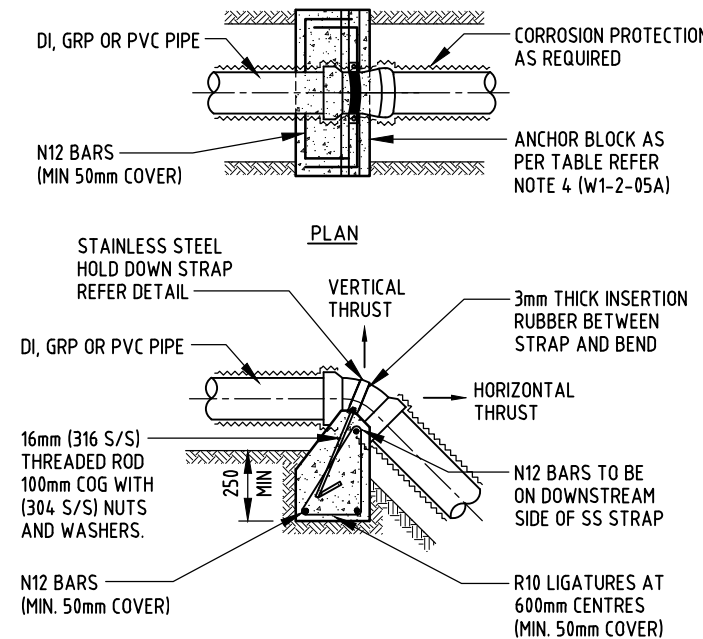
TEST PRESSURE	DN \ AHBP	TAPERS & REDUCERS			
		50kPa	100kPa	200kPa	
1000kPa	DN200	DN150	0.43	0.21	0.11
		DN225	0.68	0.34	0.17
	DN250	DN200	0.25	0.13	0.06
		DN150	0.96	0.48	0.24
		DN225	0.53	0.27	0.13
	DN300	DN225	0.28	0.14	0.07
		DN150	1.67	0.83	0.42
		DN200	1.24	0.62	0.31
		DN225	0.99	0.49	0.25
		DN250	0.71	0.35	0.18
1200kPa	DN375	DN200	2.65	1.32	0.66
		DN225	2.37	1.19	0.59
		DN250	2.07	1.03	0.52
		DN300	1.29	0.65	0.32
	DN450	DN250	3.63	1.82	0.91
		DN300	2.86	1.43	0.72
		DN375	1.57	0.78	0.39

		VERTICAL BENDS			
		90° & 60°	45° & 30°	22.5°	11.25°
1000kPa	DN150	1.26	0.89	0.48	0.25
	DN200	2.17	1.54	0.83	0.42
	DN225	2.71	1.91	1.04	0.53
	DN250	3.30	2.33	1.26	0.64
	DN300	4.80	3.40	1.84	0.94
1200kPa	DN375	7.99	5.65	3.06	1.56
	DN450	11.32	8.00	4.33	2.21

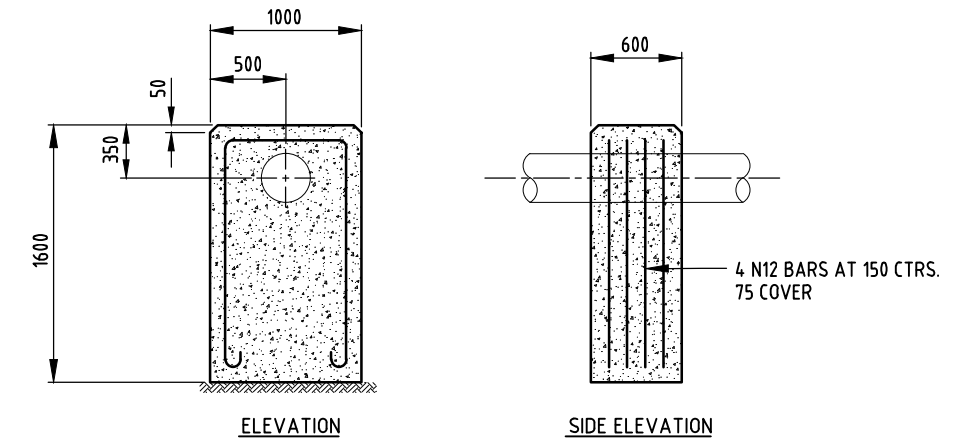
SOIL DESCRIPTION	SUGGESTED ALLOWABLE HORIZONTAL BEARING PRESSURE 'AHBP' (WHERE COVER >450)	MINIMUM INTO TRENCH BASE
VERY SOFT TO FIRM CLAY, LOOSE CLEAN SAND OR UNCOMPACTED FILL DOMESTIC REFUSE	GEOTECH ASSESSMENT REQUIRED	300
STIFF CLAY, MEDIUM DENSITY CLEAN SAND	50	300
VERY STIFF CLAY, DENSE CLEAN SAND OR GRAVEL, BROKEN OR DECOMPOSED ROCK	100	300
HARD CLAY, SOUND ROCK	200	150



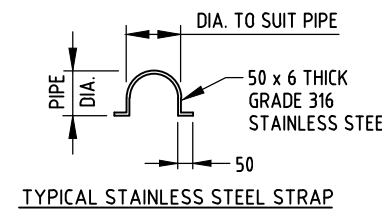
ANCHOR BLOCK FOR DI/CL PIPELINE DEAD ENDS
REFER TO PWC STD. DRG. W1-2-19



ANCHOR BLOCK VERTICAL BENDS
(FOR VERTICAL & HORIZONTAL THRUST)



ANCHOR BLOCK FOR LOWERING WATER MAINS
REFER TO PWC STD. DRG. W1-2-08



TYPICAL STAINLESS STEEL STRAP

NO	DESCRIPTION	DRN	DATE	CKD	APPD
3	GENERAL AMENDMENTS 2021.	PW	JUNE'21	JR	DC
2	REDRAWN IN AUTOCAD.	AW	OCT'18	JR	DC
1	TRENCH DETAILS DELETED. ANCHOR BLOCK SPACING CHANGED.	AW	JUN'11	RJ	JP
AMENDMENTS					



DES	ME	WATER STANDARD DRAWING		
DRN		MAINLAYING		
CHK		THRUST BLOCK DETAILS		
APPD		FOR DN150 TO DN450 PRESSURE MAIN		
SCALE	N.T.S.	A3	DRAWING NUMBER	W1-2-05B
ISSUED	DEC'88			
ALL DIM. IN mm				3
DRAFTING STANDARD TO A.S.1100		CAD PRODUCT - DO NOT AMEND MANUALLY		
		AMDT		