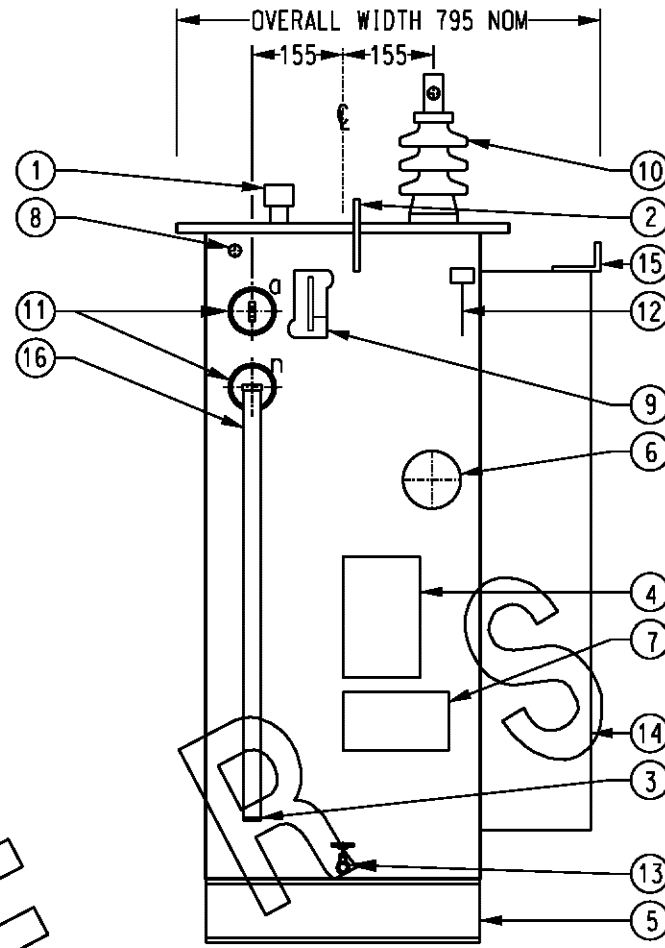
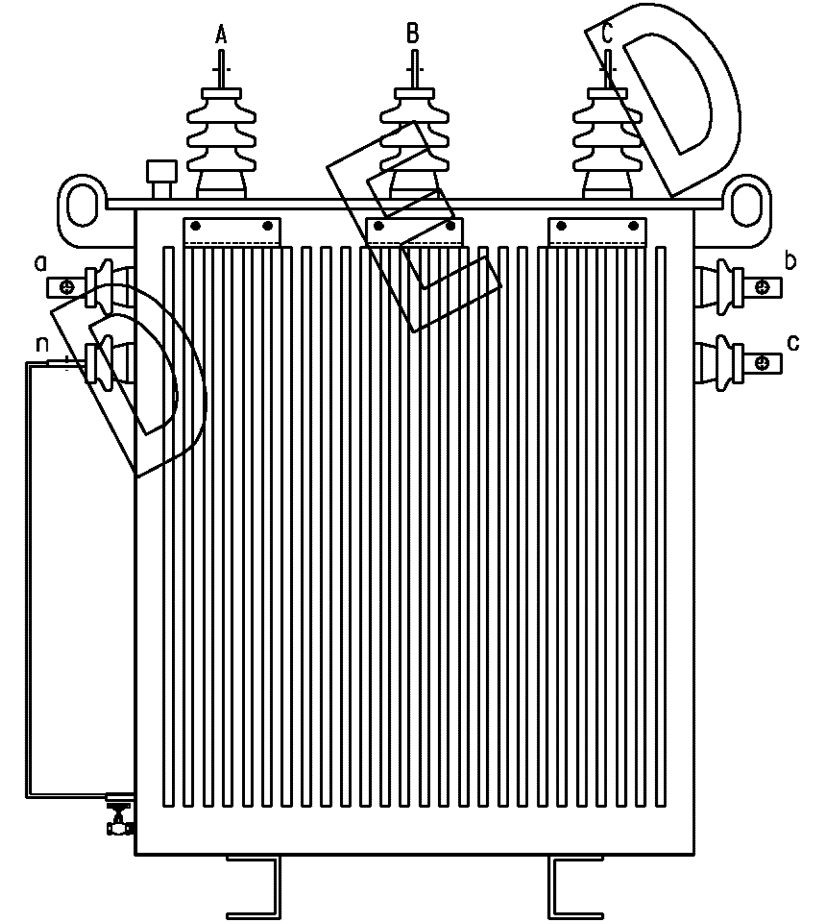


BACK ELEVATION



END ELEVATION



FRONT ELEVATION

ITEM NO	SIZE	VOLTAGE		STOCK CODE
		PRIM	SEC	
1	500kVA	11kV	433V	172 775
2	500kVA	22kV	433V	172 908

NOTES:

1. TRANSFORMER MUST COMPLY WITH PAWA STANDARD TECHNICAL SPECIFICATION STS001.
2. VECTOR GROUPING TO BE Dyn1.
3. HV WINDING TAPS TO BE +/-2.5%, -5% AND -7.5%.

10	HV BUSHING 11kV OR 22kV		
9	FLUSH TYPE OIL GUAGE		
8	PRESSURE RELIEF VALVE		
7	NUMBER PLATE BRACKET	16	25 X 6.3 CU BUSBAR CONNECTING LV NEUTRAL BUSHING TO EARTH TERMINAL
6	TAP SELECTOR		
5	BASE CHANNELS	15	SURGE DIVERTER SUPPORT HOLES
4	NAME PLATE	14	COOLING FINS
3	EARTH LUG STAINLESS STEEL	13	DRAIN VALVE 25mm DIA C/W GASKETED FLANGE PLUG
2	LIFTING LUG	12	THERMOMETER POCKET
1	FILLER SPOUT C/W GASKETED FLANGE PLUG	11	LV BUSHING
TAG NO	DESCRIPTION LIST	TAG NO	DESCRIPTION LIST

NO	DESCRIPTION	DRN	DATE	CKD	APPD
1	SUPERSEDED	A.S.	AUG'06	R.S.	S.C.
AMENDMENTS					

PowerWater
NORTHERN TERRITORY

DES	A.BUTLER	POWER STANDARD DRAWING	
DRN	R.INNES	TRANSFORMERS 11kV & 22kV - PLATFORM 500kVA GENERAL ARRANGEMENT	
CKD	M. BOCK		
APPD	F. ROBSON		
SCALE	NTS	A3	DRAWING NUMBER S01-01-09-02
ISSUED	FEB'97		
ALL DIM. IN mm		DRAFTING STANDARD TO A.S.1100	
		CAD PRODUCT - DO NOT AMEND MANUALLY	



AMDT