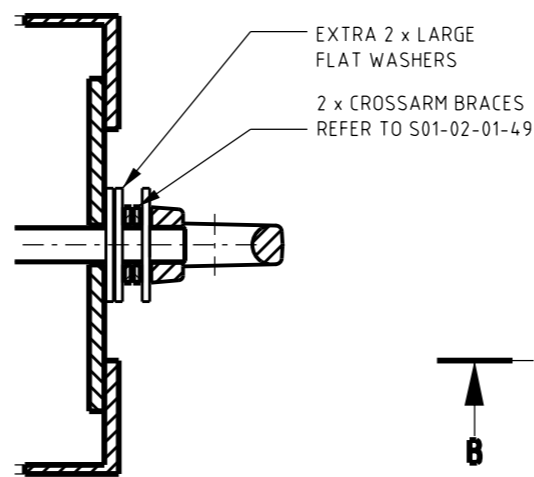
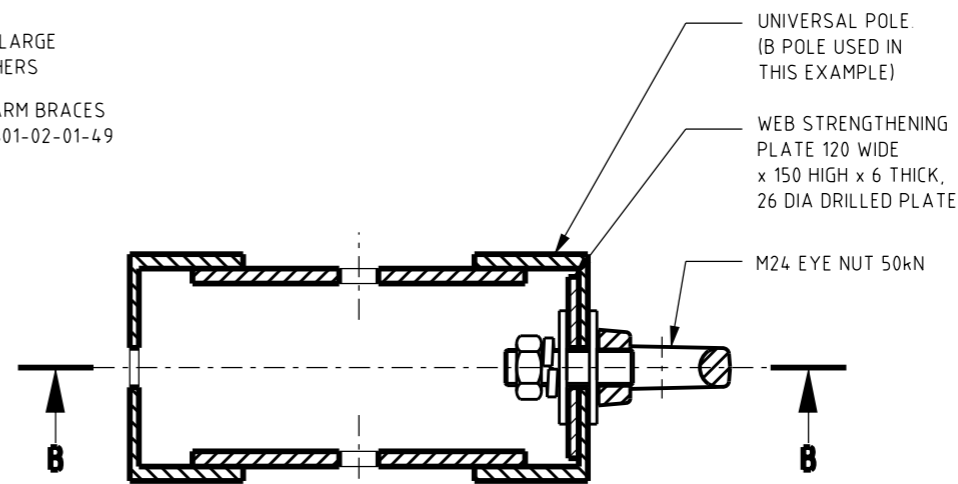


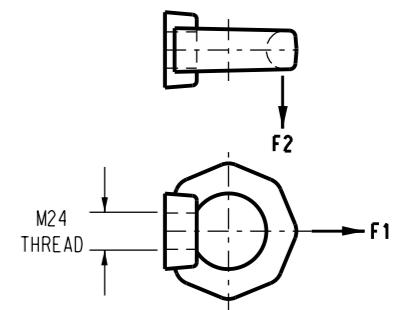
PLAN SECTION  
TYPICAL ARRANGEMENT



PLAN SECTION  
FOR USE WITH CROSSARM BRACES



PLAN SECTION

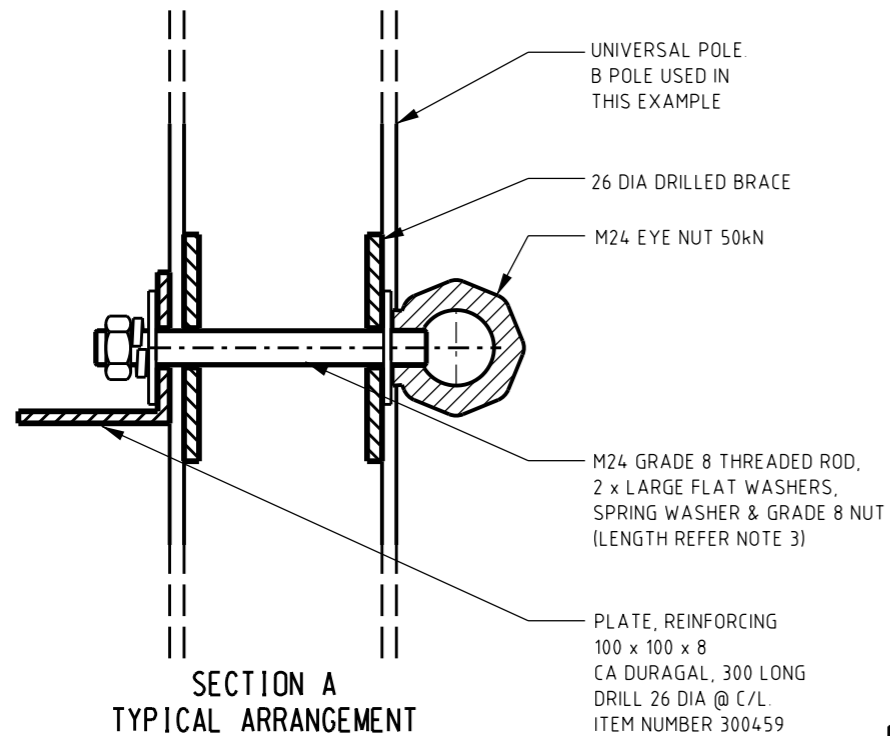


ITEM: EYE NUT FOR STAYS (50 kN)

MATERIAL: GRADE 80, HIGH TENSILE  
USE ONLY GRADE 8 BOLTS  
MAX LOAD F1 8000kg, F2 2000kg  
EYE HOLE DIAMETER: 50 MM  
ITEM NUMBER: 298729

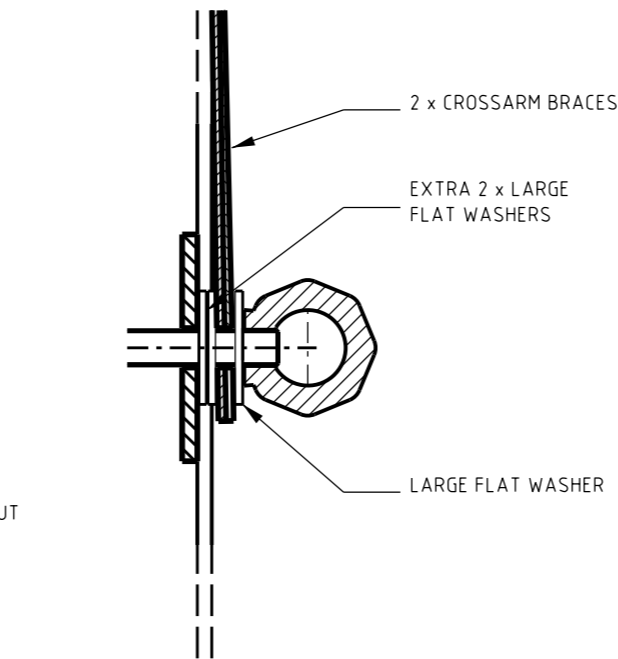
NOTES:

1. GUYS ARE NOT TO BE INSTALLED AT CROSSARM HEIGHT. POSITION AT BRACE UNDER CROSSARM.
2. INSTALL EYE NUT IN VERTICAL ORIENTATION.
3. LENGTH OF THREADED ROD IS DESIGNED TO HAVE FULL THREAD CONTACT WITH EYE NUT, WITHOUT PROTRUSION INTO EYE.  
  
EYE NUT MOUNTED ON STRONG OF POLE:  
USE 90 LONG M24 GRADE 8 THREADED ROD.
4. USE ONLY GRADE 8 NUTS AND GRADE 8 THREADED ROD.

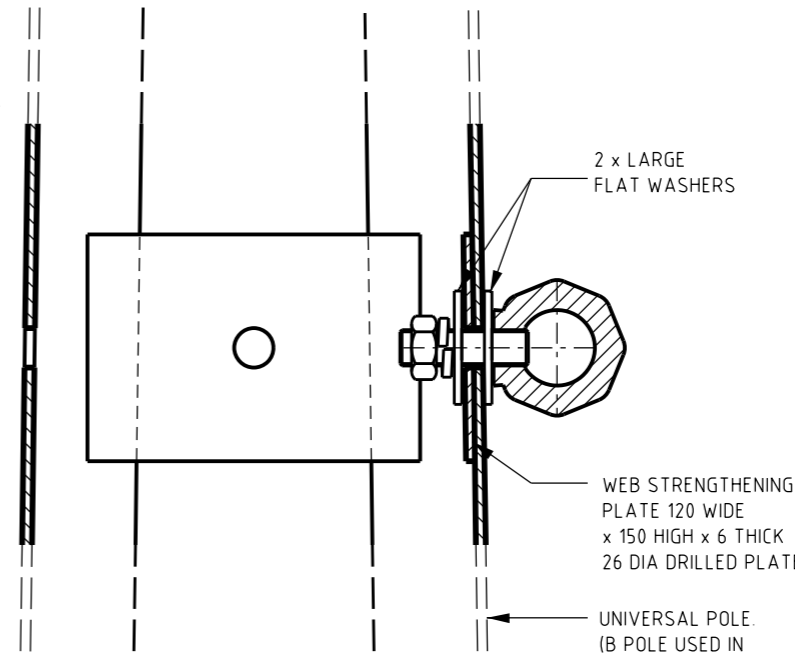


SECTION A  
TYPICAL ARRANGEMENT

EYE NUT FOR STAYS ON WEAK OF POLE.  
USE ONLY GRADE 8 THREADED ROD AND NUTS



SECTION  
FOR USE WITH CROSSARM BRACES



SECTION B

DETAIL SHOWING TYPICAL ARRANGEMENT  
OF EYE NUT FOR STAYS ON STRONG OF POLE.  
USE ONLY GRADE 8 THREADED ROD AND NUTS

3	CHANGED 'STOCK CODE' TO 'ITEM NUMBER'. REMOVED MANUFACTURER INFORMATION. ADDED HOLE DIAMETER AND KN RATING TO ITEM LABEL	A.N.	AUG'21	C.C.C.	B.V.
2	TITLEBLOCK & DRAWING NUMBER FORMATTED	K.T.	DEC'18	C.C.	C.C.
1	SECTION A : REINFORCING PLATE & STOCK CODE ADDED	A.S.	8.3.02	M.B.	F.R.R.
0	ISSUED FOR CONSTRUCTION	A.S.	7.3.01	M.B.	F.R.R.
NO	DESCRIPTION	DRN	DATE	CKD	APPD
AMENDMENTS					



DES	M. BOCK	POWER STANDARD DRAWING			
DRN	R. INNES	LINE HARDWARE EYE NUTS FOR STAYS TYPICAL GUY DETAILS			
CKD	M. BOCK				
APPD	F. ROBSON				
SCALE	JULY'00				
ISSUED	1:5				
ALL DIM. IN mm		A3	DRAWING NUMBER	S01-01-04-40	3 AMDT
DRAFTING STANDARD TO A.S.1100		CAD PRODUCT - DO NOT AMEND MANUALLY			