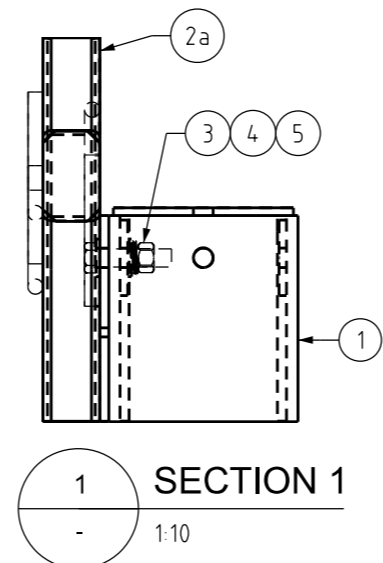
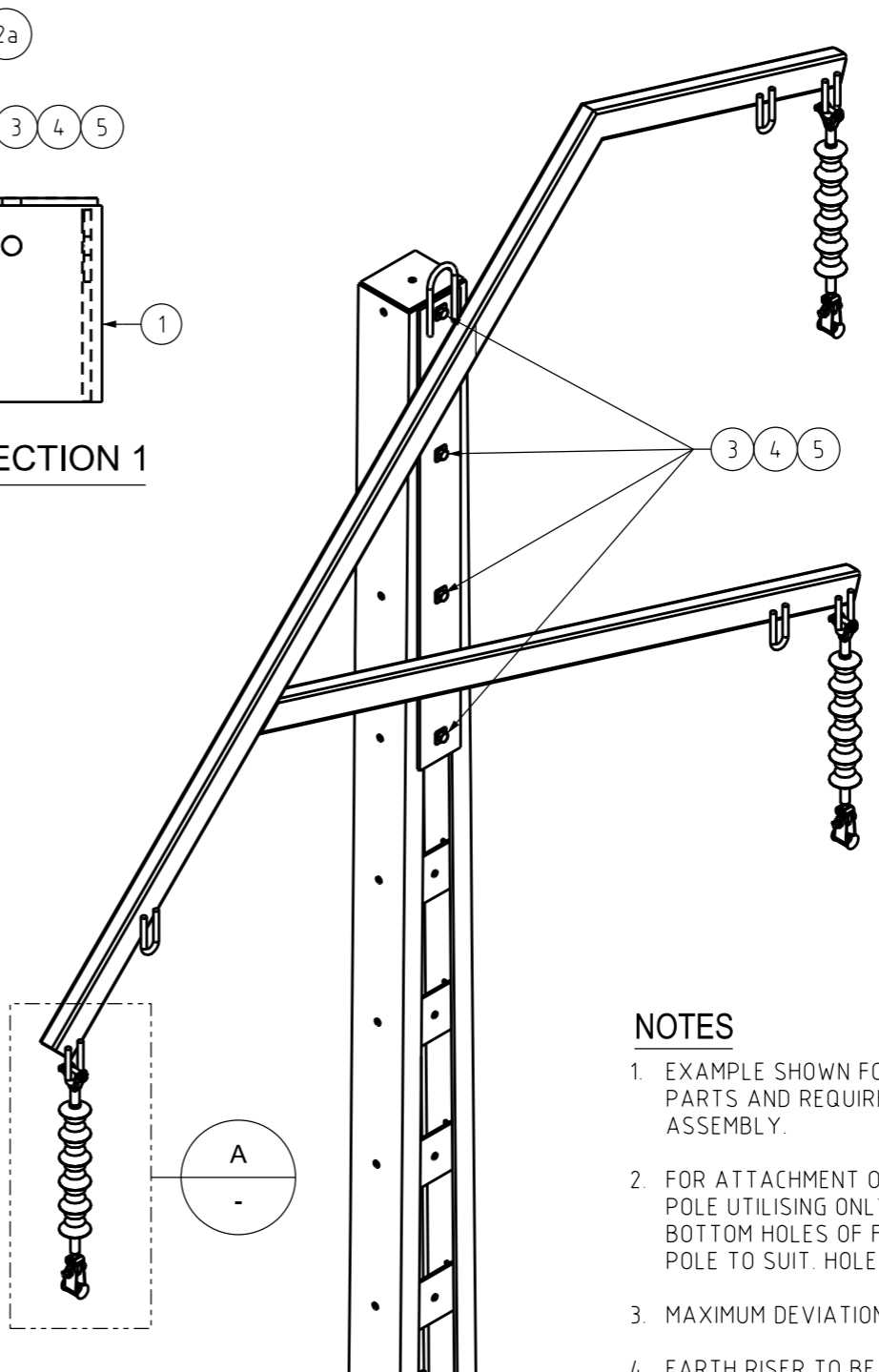


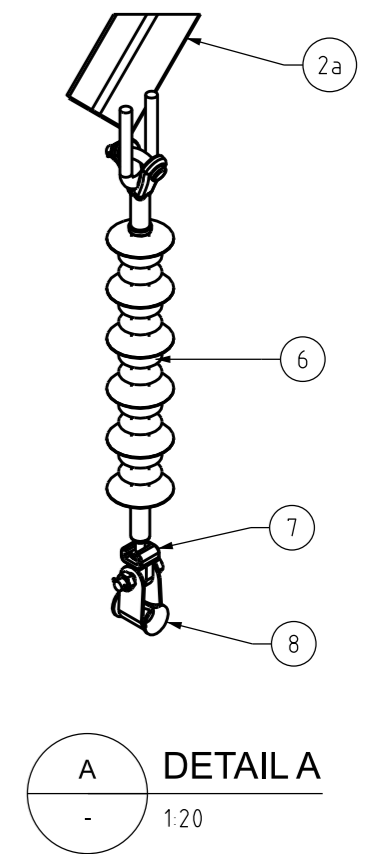
FRONT VIEW
1:40



SECTION 1
1:10



ISOMETRIC VIEW
1:25



DETAIL A
1:20

NOTES

- EXAMPLE SHOWN FOR WISHBONE RIGHT HAND ONLY. SAME PARTS AND REQUIREMENTS APPLY FOR WISHBONE LEFT HAND ASSEMBLY.
- FOR ATTACHMENT ON TO WELDED POLE SOLUTION, FASTEN TO POLE UTILISING ONLY TWO OF THE TOP AND TWO OF THE BOTTOM HOLES OF FASTENING PLATE. DRILL TWO HOLES ON POLE TO SUIT. HOLES NOT TO BE DRILLED IN WELD SEAM.
- MAXIMUM DEVIATION 22°
- EARTH RISER TO BE INSTALLED AS REQUIRED.

ITEM	QTY	DESCRIPTION	DRG NUMBER	ITEM NUMBER
8	3	AGSU SUSPENSION CLAMP	S01-01-04-04	-
7	3	SOCKET CLEVIS	S01-01-04-02	-
6	3	16mm BALL - "Y" CLEVIS POLYMER SUSPENSION INSULATOR	S10-01-04-10	3000491
5	4	M24 HELICAL SPRING WASHERS	S01-01-04-43	114330
4	4	M24 SQUARE WASHER HOT DIP GALV	S01-01-04-43	298828
3	4	M24 x 65mm METRIC HEXAGON BOLTS WITH NUTS	S01-01-04-43	400801
2b	1	WISHBONE ARM LEFT HAND	S01-01-02-01	504920
2a	1	WISHBONE ARM RIGHT HAND	S01-01-02-01	504921
1	1	POLE	-	-

MATERIAL SCHEDULE

NO	DESCRIPTION	CC	DRN	DATE	B.V	B.C	APPD
0	ISSUED FOR CONSTRUCTION			OCT-22	B.V	B.C	
AMENDMENTS							



DES		POWER STANDARD DRAWING	
DES	A TAYLOR	ASSEMBLIES	
DRN	C COPPINS	66kV WISHBONE ARRANGEMENT	
CKD	B VANDERSTELT	FOR UNIVERSAL POLE CONSTRUCTION	
APPD	B CHEUNG	A3	DRAWING NUMBER
SCALE	AS SHOWN		S01-02-05-23
ISSUED	FEB-22		
ALL DIM. IN mm			
DRAFTING STANDARD TO A.S.1100		CAD PRODUCT - DO NOT AMEND MANUALLY	

