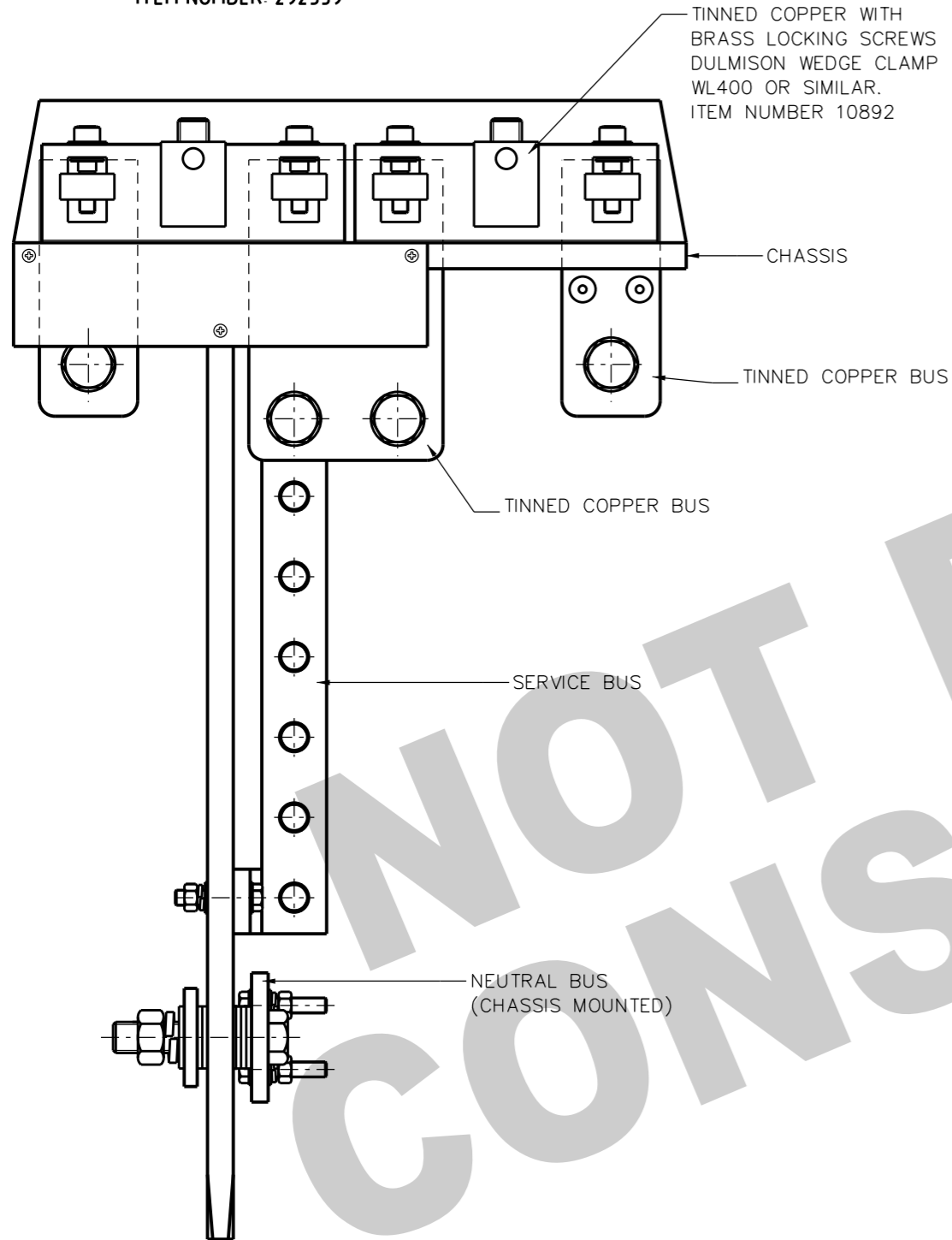
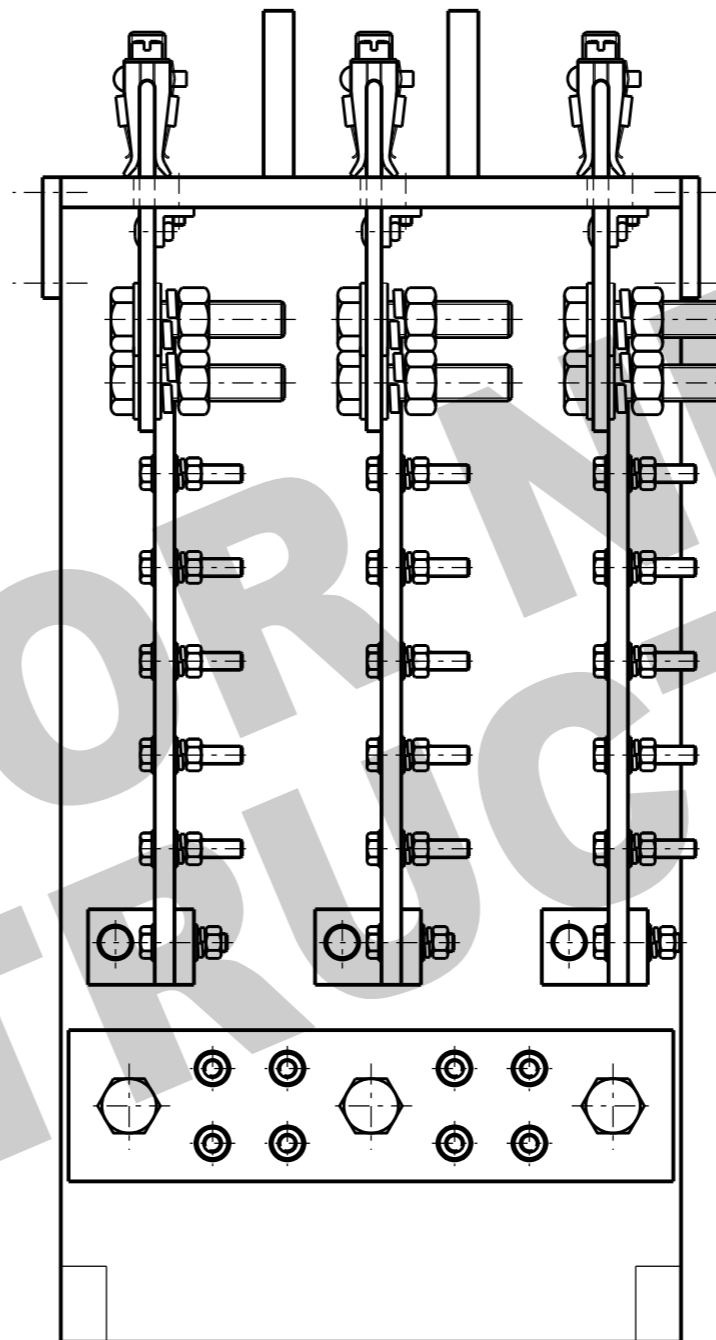


**ITEM 1: 3 WAY LINK PANEL**

ITEM NUMBER: 292359



**SIDE ELEVATION**



**FRONT ELEVATION**

**ITEM 2: NEUTRAL BUSBAR KIT (SEE NOTE 12)**

C/W 8xM16 BOLT ASSEMBLIES AND SPACER WASHERS  
ITEM NUMBER 504228

**NOTES:**

1. OVERALL DIMENSIONS 260 X 210 X 510 TO SUIT EXISTING URD PILLAR.
2. ARRANGEMENT OF BOLTS AND WASHERS TO BE SIMILAR TO PAWA STD DRG NO S02-01-03-04.
3. BOLTS CONNECTING PHASE MAINS TO BE M12 X 40 LONG.
4. SERVICE BUS TO PROVIDE FOR 6 SERVICES PER PHASE.
5. NEUTRAL BUS TO PROVIDE FOR 3 LV MAINS CONNECTIONS AND 8 SERVICE CONNECTIONS.
6. NEUTRAL BUS TO BE CHASSIS MOUNTED TOWARDS BOTTOM OF PANEL.
7. CHASSIS TO BE MANUFACTURED FROM BRAMITE.
8. PHASE BARRIERS REQUIRED BETWEEN CLAMPS.
9. CURRENT RATING OF WEDGE CLAMP AND BUS TO BE PROVIDED BY MANUFACTURER.
10. ONLY APPROVED MATERIALS TO BE USED.
11. NOT SUITABLE FOR 240sqmm CABLE.
12. NEUTRAL BUSBAR KIT SHALL BE USED FOR REPLACING NEUTRAL BUSBAR ON MAINS SIDE TO PROVIDE ADDITIONAL NEUTRAL CONNECTIONS.

NO	DESCRIPTION	DRN	DATE	CKD	APPD
5	UPDATED TITLE BLOCK. SET TO 'NOT FOR NEW CONSTRUCTION'. CLARIFIED ITEM DESCRIPTIONS.	A.N.	JUL'21	C.C.C.	B.V.
4	NEUTRAL BUSBAR KIT & NOTE 12 ADDED	C.C.	OCT'18	B.V.	B.V.
3	ADD NOTE 11	K.I.	NOV'05	C.C.	C.C.
2	ITEM NUMBER FOR WEDGE LINK ADDED	K.I.	MAR'05	C.C.	C.C.
1	DETAILING OF 3-WAY LINK	A.S.	JUN'02	F.R.R.	F.R.R.



DES	F. ROBSON	POWER STANDARD DRAWING		
DRN	R. INNES	<b>DISTRIBUTION PILLARS RESIDENTIAL TYPE PANEL 3 WAY LINK - GENERAL ARRANGEMENT</b>		
CKD	-			
APPD	F. ROBSON			
SCALE	N.T.S.			
ISSUED	MAR'99	A3	DRAWING NUMBER	S02-01-03-09
ALL DIM. IN	mm			
DRAFTING STANDARD TO A.S.1100		CAD PRODUCT - DO NOT AMEND MANUALLY		AMDT