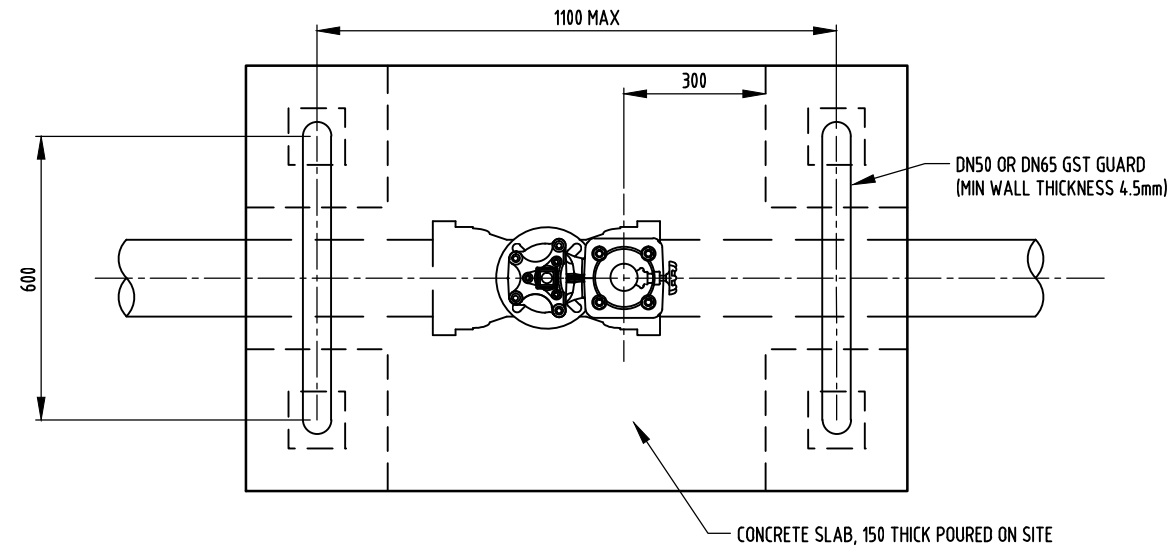
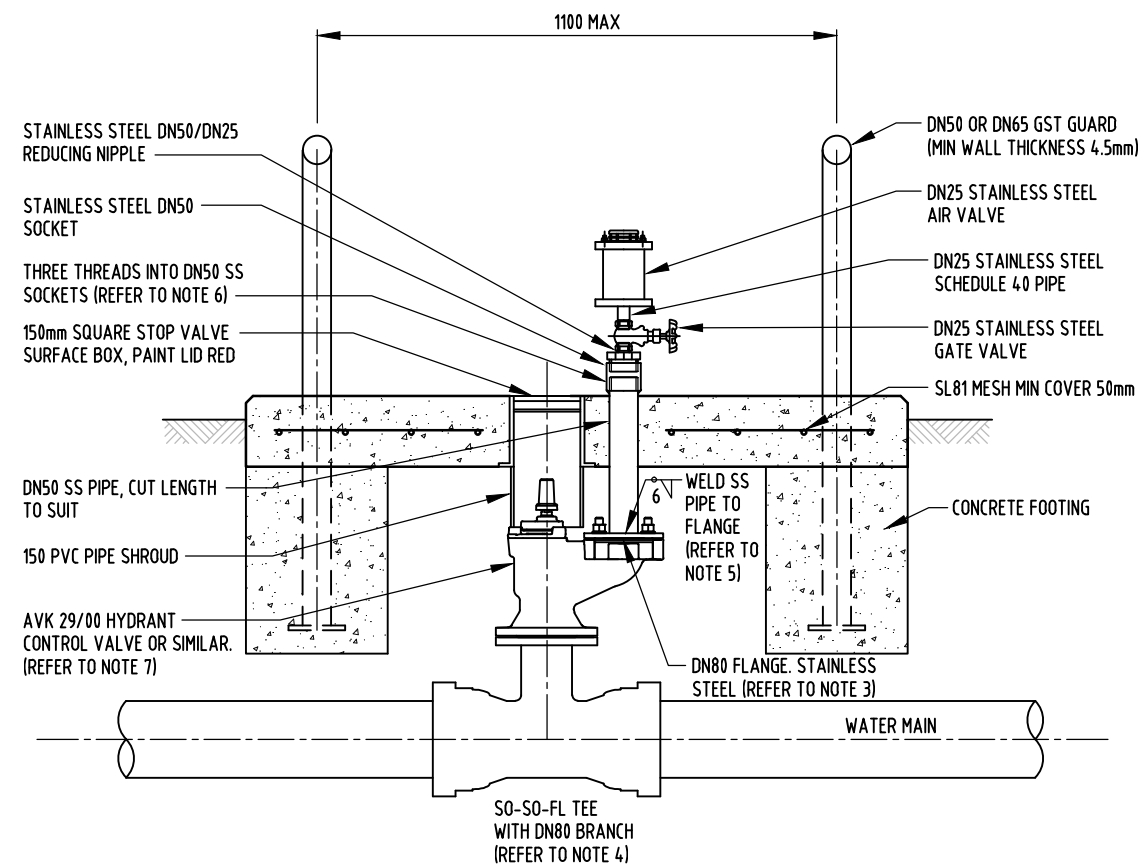


**FOR POTABLE WATER ONLY**

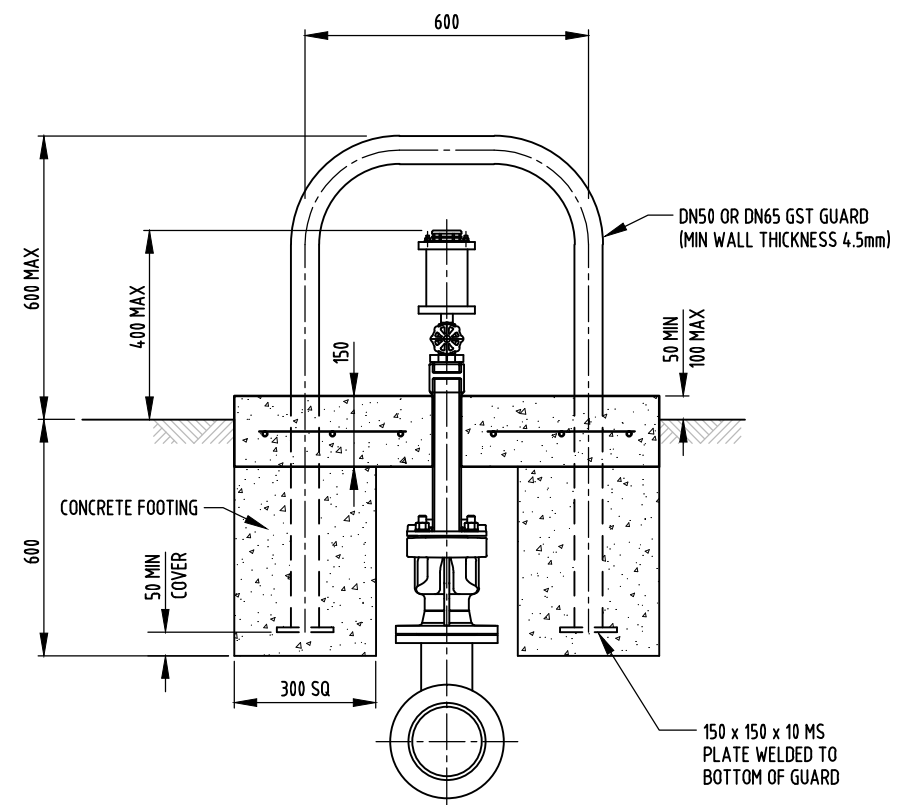
**THIS ASSEMBLY IS NOT TO BE USED FOR SEWERAGE INSTALLATIONS**



**PLAN**



**ELEVATION**



**RIGHT END ELEVATION**

**NOTES**

1. THIS DETAIL IS NOT PERMITTED FOR USE ON MAINS LARGER THAN DN225.
2. AIR VALVE/STEM MATERIAL: 304 OR 316 STAINLESS STEEL.
3. USE INSULATED FLANGE KIT INCLUDING INSULATED BOLTS.
4. FOR DICL MAINS, USE OF A SO-SP-FL TEE IS PERMITTED.
5. ACID PICKLE OR PASSIVATE STAINLESS STEEL AFTER WELDING AND/OR THREADING. USE SILVER BRAZING ALLOY (MIN 38% SILVER TO AS 1167.1) FOR ALL CAPILLARY JOINTS OF STAINLESS STEEL PIPES AND FITTINGS. USE FILLER RODS OF LOW CARBON STAINLESS STEEL NOT GREATER THAN 2mm IN DIAMETER AND COMPLYING WITH AS 1167.2.
6. PROTECT THREADED JOINT WITH TAPE BEFORE POURING SLAB. REMOVE TAPE AFTERWARDS.
7. PLACE 150mm PVC PIPE SHROUD OVER VALVE SPINDLE BEFORE BACKFILLING.
8. CONCRETE FOR THRUST AND ANCHOR BLOCKS & GENERAL CONCRETING SHALL BE CLASS N25 IN ACCORDANCE WITH AS.1379 AND AS.3600.

4	GENERAL AMENDMENTS 2021.	PW	DEC'21	JR	DC
3	NOTE "FOR POTABLE WATER ONLY" ADDED.	AW	JUNE'18	JR	DC
2	ASSEMBLY REVISED AND REDRAWN.	RGI	AUG'08	RJ	JP
1	DRAWING WITHDRAWN.	RGI	OCT'05	RJ	JP
NO	DESCRIPTION	DRN	DATE	CKD	APPD
	AMENDMENTS				



DES	RJ	WATER STANDARD DRAWING	
DRN	RGI	MAINLAYING	
CHK	RJ	STANDARD DN25	
APPD	JP	AIR VALVE DETAIL	
SCALE	N.T.S.	A3	DRAWING NUMBER W1-2-13A
ISSUED	AUG'08		
ALL DIM. IN mm			
DRAFTING STANDARD TO A.S.1100		CAD PRODUCT - DO NOT AMEND MANUALLY	