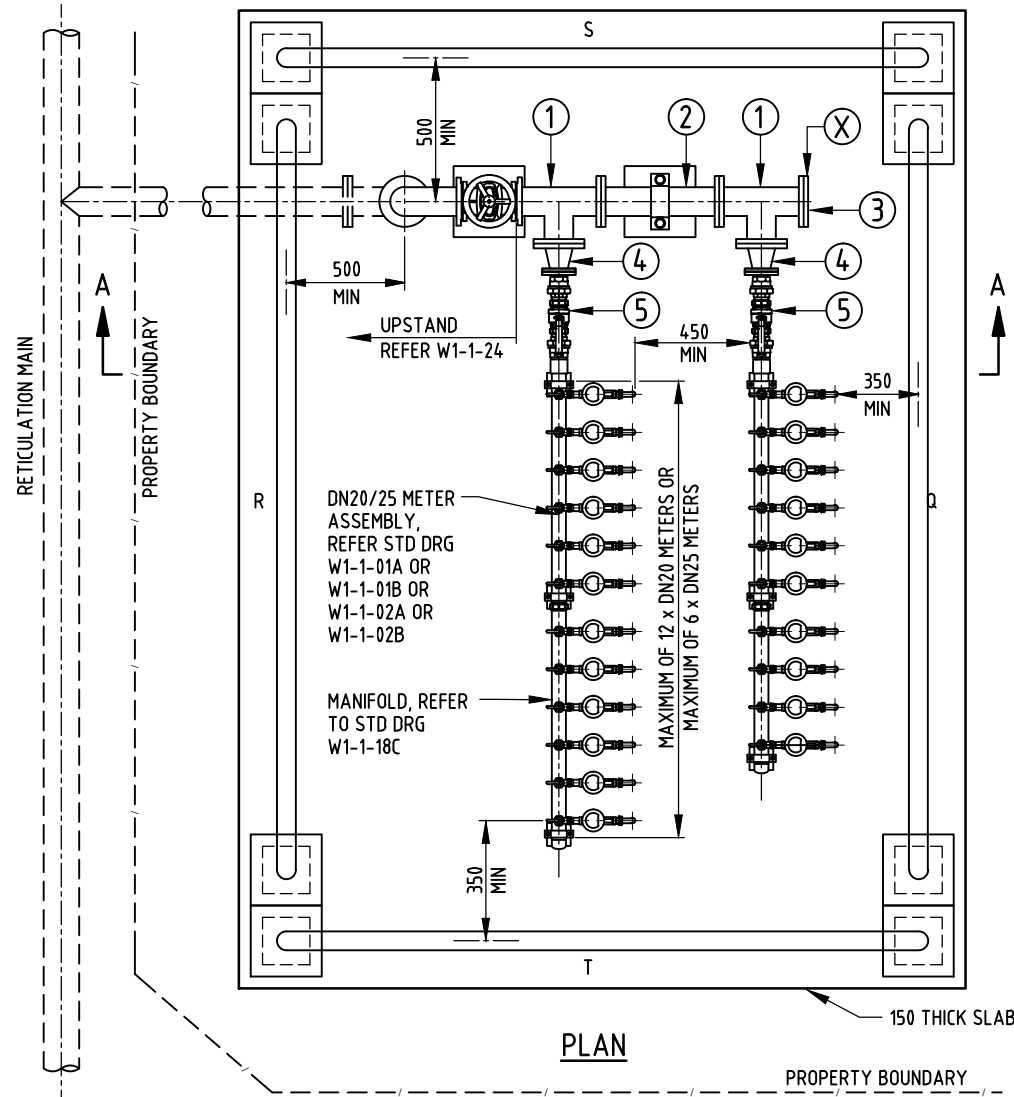


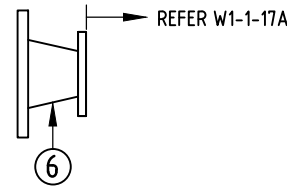
FOR POTABLE WATER ONLY

DN50 GST SUPPORT
WITH 250 x 250 x 10 GALV
BASE PLATE (4 BOLTS)

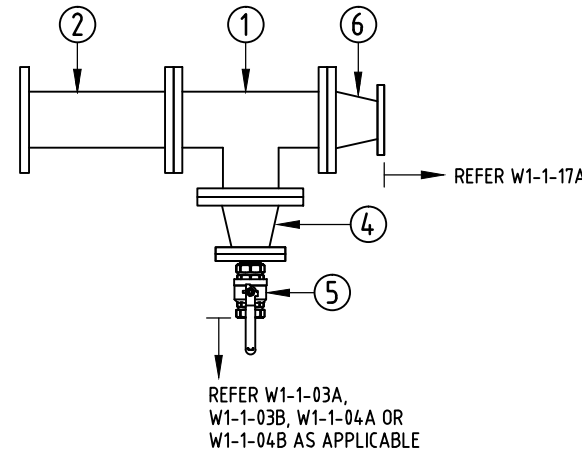


OPTIONAL CONNECTIONS AT 'X'

A. DN100 FIRE SUPPLY (DN150 PROPERTY SERVICE ONLY)



B. DN100 FIRE SUPPLY WITH DN40 OR DN50 COMMON PROPERTY METER (DN150 PROPERTY SERVICE ONLY)

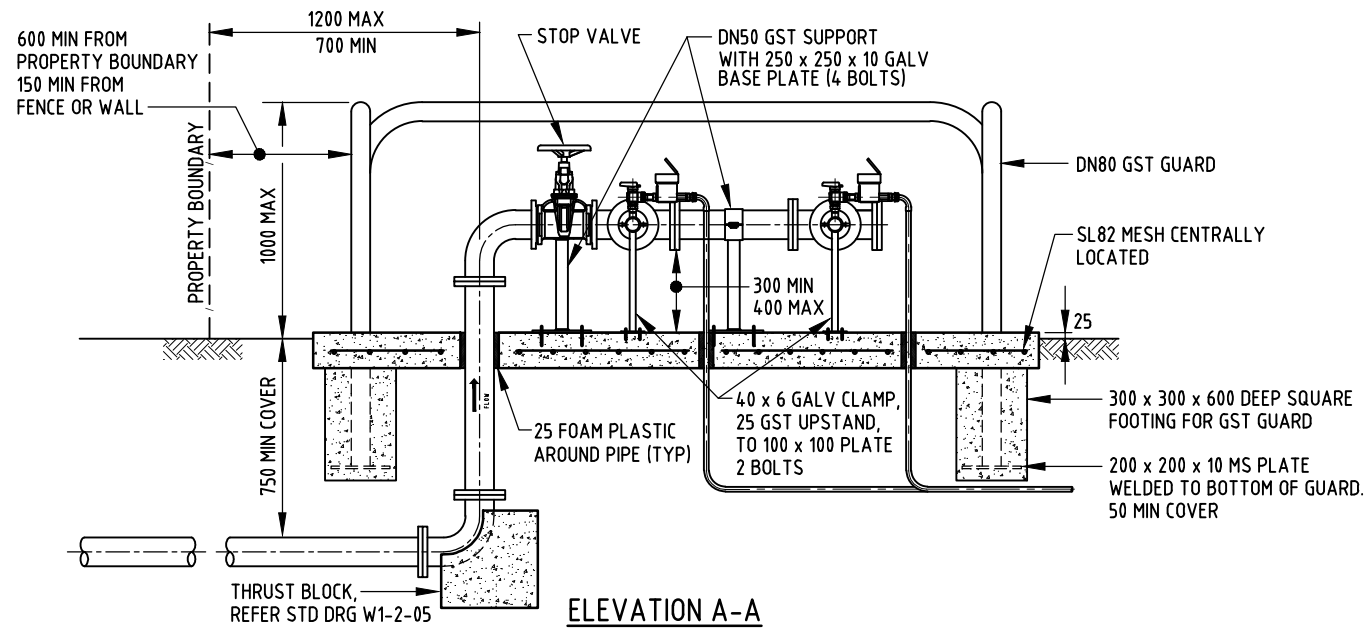


NOTES:

- ALL DIMENSIONS IN MILLIMETRES UNLESS NOTED OTHERWISE.
- COPPER ALLOY SHALL BE DEZINCIFICATION RESISTANT (DR) TO AS2345.
- USE SILVER BRAZING ALLOY (MIN 2% SILVER TO AS1167.1) FOR ALL CAPILLARY JOINTING OF COPPER PIPES AND FITTINGS. OR ALTERNATIVELY, FOR HORIZONTAL JOINTS ABOVE GROUND PRESS FITTINGS MAY BE USED.
- METER ASSEMBLIES SHALL BE HORIZONTAL.
- ONLY POWER AND WATER (OR ITS AUTHORISED CONTRACTORS) ARE PERMITTED TO TAP EXISTING, IN-SERVICE (LIVE) MAINS OR MAINS THAT HAVE BEEN HYDROSTATICALLY TESTED. WITHIN LICENSED AREAS AND UPON PAYMENT OF THE NECESSARY FEES. PWC WILL PERFORM TAPPING OR LIVE MAINS. HOWEVER, EXCAVATION, ALL MATERIALS AND INSTALLATION SHALL BE SUPPLIED BY THE CONTRACTORS.
- ALL DN20 AND DN25 PIPE, VALVES AND FITTINGS MUST BE WATERMARK APPROVED.
- NON-METALLIC MATERIALS AND FITTINGS SHALL NOT FORM PART OF WATER METER ASSEMBLY.
- ALL MULTI-METERING PROPOSALS ARE SUBJECT TO PWC APPROVAL.
- THE NUMBER OF PROPERTY OFFTAKES PER MANIFOLD SHALL BE A MINIMUM OF THREE AND A MAXIMUM OF TWELVE (CONNECT TWO MANIFOLD SECTIONS TOGETHER FOR SEVEN OR MORE OFFTAKES).
- FOR A DN100 OR DN150 PROPERTY SERVICE, MAXIMUM NUMBER OF METERS IS:

RESIDENTIAL ONLY	1 OR MORE INDUSTRIAL/COMMERCIAL PREMISES
MAXIMUM OF 30 x DN20 METERS	MAXIMUM OF 24 x DN20 METERS
MAXIMUM OF 28 x DN20 METERS, PLUS 1 x DN25 COMMON PROPERTY METER	MAXIMUM OF 15 x DN25 METERS
MAXIMUM OF 24 x DN20 METERS, PLUS 1 x DN40 COMMON PROPERTY METER	MAXIMUM OF 12 x DN20 METERS, PLUS 1 x DN40 COMMON PROPERTY METER
MAXIMUM OF 24 x DN20 METERS, PLUS 1 x DN50 COMMON PROPERTY METER	MAXIMUM OF 12 x DN20 METERS, PLUS 1 x DN50 COMMON PROPERTY METER
- WHERE THE PROPERTY SERVICE IS DN150 AND ITEM 1 & 2 ARE DN150, DN100 FIRE SUPPLY (REFER STD DRG W1-1-17A) CAN BE CONNECTED AT 'X' ONLY..
- NO CONNECTIONS PERMITTED TO THE COPPER RISER OR FIRST 1000mm OF THE CUSTOMER'S SERVICE.
- A BACKFLOW CERTIFIED PLUMBER IS REQUIRED TO DETERMINE THE RISK OF CONTAMINATION OF THE POTABLE WATER SUPPLY DUE TO CROSS CONNECTIONS - REFER AS/NZS 3500.1. FOR MEDIUM OR HIGH HAZARD PROPERTIES, A TESTABLE BACKFLOW PREVENTION DEVICE SHALL BE FITTED.
- MINIMUM CLEARANCE TO OTHER SERVICES SHALL BE 300mm.
- FOR CONNECTION TO MAINS, REFER DRG W1-1-24.
- IDENTIFY EACH PROPERTY OFFTAKE WITH A 50x50x2 ALUMINIUM PLATE IDENTIFICATION TAG WITH PROPERTY NUMBER STAMPED IN 10mm HIGH LETTERS. DRILL METER TAP HANDLE AND CONNECT TAG WITH FPLIT RING OR 3mm GALVANISED WIRE.
- PROTECTIVE GUARDS 'R' AND 'T' ARE NOT REQUIRED IF THE PROPERTY BOUNDARY IS FENCED.
- CONCRETE SHALL BE GRADE N25 MINIMUM (MAX AGGREGATE SIZE 10mm).
- FOR SEVEN OR MORE OFFTAKES, PROVIDE THREE SUPPORTS UNDER DN50 MANIFOLD, OTHERWISE PROVIDE TWO SUPPORTS.
- USE COPPER OR STAINLESS STEEL 25/20 REDUCING BUSH IN THE MANIFOLD OFFTAKES FOR DN20 METERS.
- SUBJECT TO WRITTEN AGREEMENT REGARDING REGULAR BACKFLOW PREVENTION DEVICE TESTING, PWC WILL CONSIDER OPTIONS FOR INSTALLATION OF COMMON BACKFLOW PREVENTION DEVICES AT UPSTREAM END OF DN50 MANIFOLD/S.
- FIRE HOSE REELS CANNOT BE CONNECTED TO DN20 METERS.
- FIRE HOSE REELS (WHERE INSTALLED) SHOULD BE CONNECTED TO A DN40 OR DN50 COMMON PROPERTY METER.

ITEM	DESCRIPTION	METER SIZE DN		NOTES
		100	150	
1	DN150 - DN100 REDUCING TEE DN100 - DN80 REDUCING TEE	- 1 PER MANIFOLD	1 PER MANIFOLD -	
2	DN150 DI FLANGED PIPE DN100 HYDRANT RISER	- 1 OR MORE	1 OR MORE -	LENGTH DETERMINED ON SITE MINIMUM 450mm
3	DN100 BLANK FLANGE	1	-	
4	DN100 - DN50 FLANGED TAPER DN80 - DN50 FLANGED TAPER	- 1 PER MANIFOLD	1 PER MANIFOLD -	
5	DN50 SS BALL VALVE	1 PER MANIFOLD	1 PER MANIFOLD	WITH LOCKABLE HANDLE - ADDITIONAL ITEM FOR OPTIONAL CONNECTIONS A OR C
6	DN150 - DN100 FLANGED TAPER	N/A	OPTIONAL	ITEM FOR OPTIONAL CONNECTIONS B OR C



1	GENERAL AMENDMENTS 2020. ISSUED FOR INFORMATION.	PW	JULY'20	JR	DC
0		AW	OCT'18	JR	DC
NO	DESCRIPTION	DRN	DATE	CKD	APPD
AMENDMENTS					



DES	RJ	WATER STANDARD DRAWING	
DRN	AW	MULTIMETERING	
CHK	RJ	MANIFOLD ASSEMBLY DN20 AND DN25 SERVICES	
APPD	RJ	WITH DN100 OR DN150 PROPERTY CONNECTION	
SCALE	N.T.S.	A3	DRAWING NUMBER W1-1-31
ISSUED	JULY'15		
ALL DIM. IN mm			
DRAFTING STANDARD TO A.S.1100		CAD PRODUCT - DO NOT AMEND MANUALLY	
			1
			AMDT