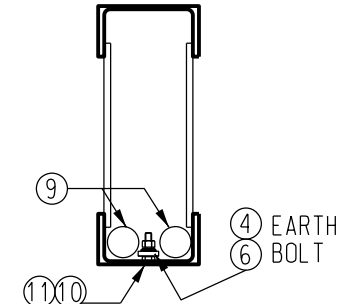
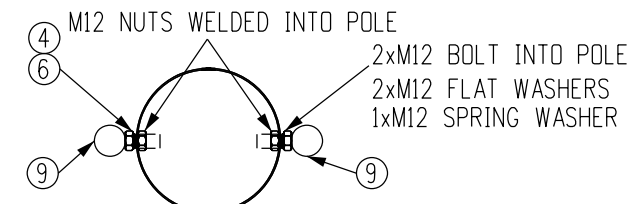


TYPE A

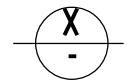
TYPE B



FOR ROUND POLE CONSTRUCTION

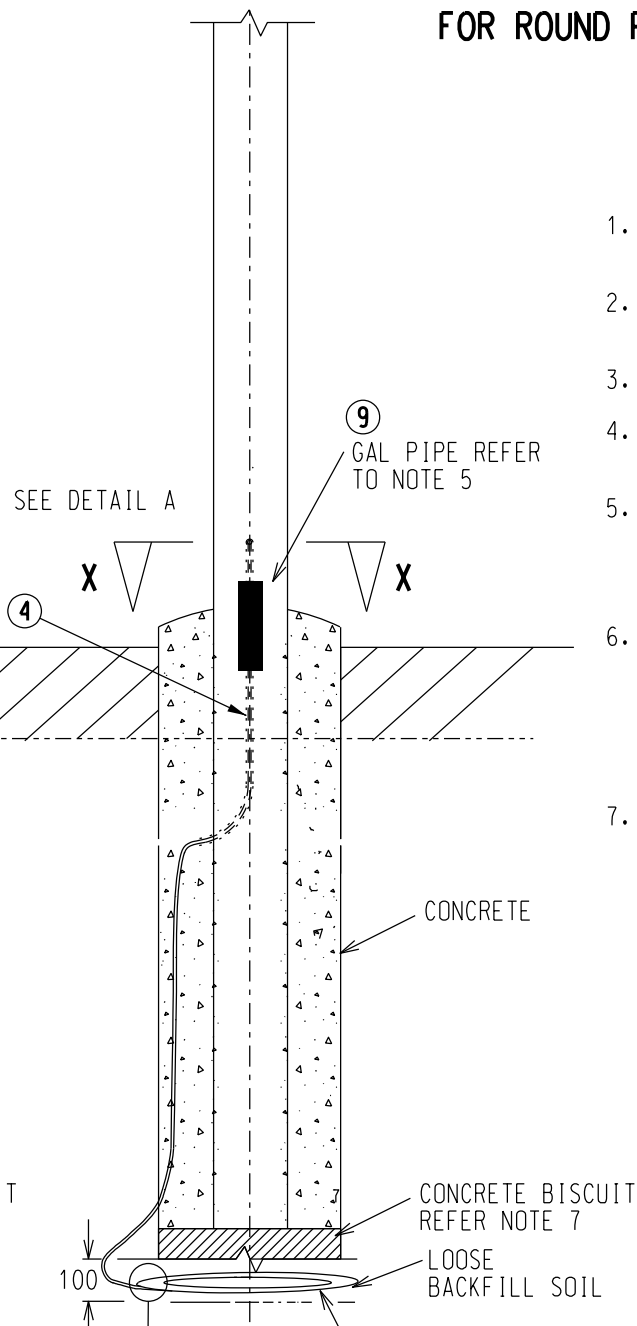
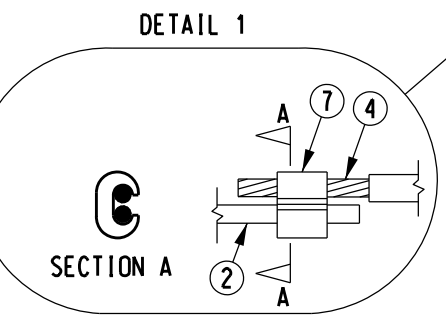
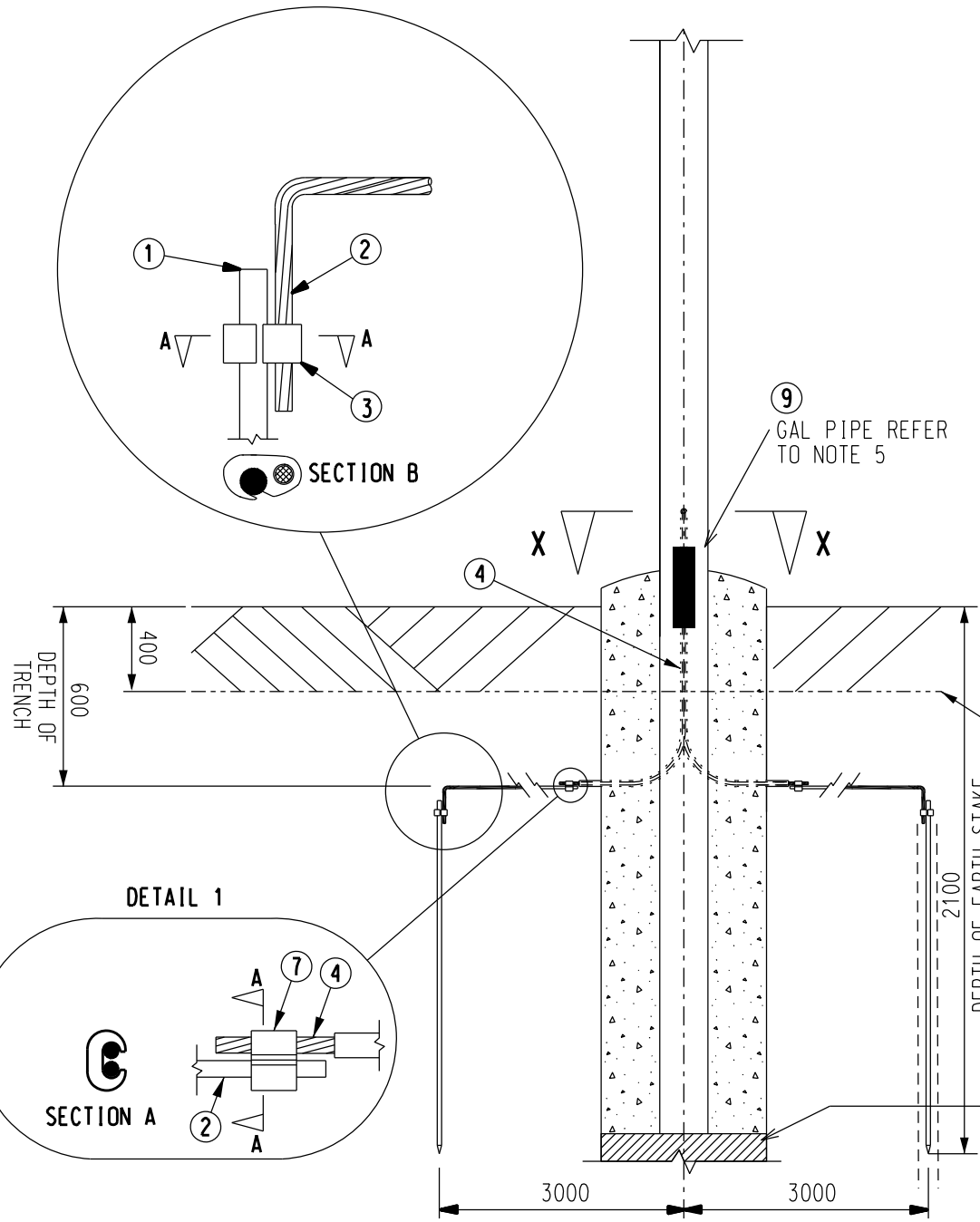
FOR UNIVERSAL POLE CONSTRUCTION

SECTION



NOTES

1. ALL POLES TO BE EARTHED AS SHOWN EXCEPT WHERE SPECIAL ARRANGEMENTS ARE REQUIRED, SUCH AS FOR POLE MOUNTED SUBSTATIONS, G.B.S, METERING UNITS, CAPACITOR BANK INSTALLATIONS, CABLE TERMINATIONS, ETC.
2. EARTHING TYPE A IS TO BE USED ON EVERY 5TH POLE IN URBAN AREAS AND EVERY 3RD POLE IN RURAL AREAS. ALL OTHER NON-SPECIAL POLES ARE TO BE EARTHED AS SHOWN IN TYPE B.
3. EARTH ELECTRODES ARE TO BE PLACED DIRECTLY BELOW THE CENTERLINE OF OVERHEAD CONDUCTORS.
4. USE 4M OF YELLOW/GREEN INSULATED CABLE FROM EARTHING BOLT TO BARE COPPER 19/2.14 (70 sqmm) CONDUCTOR. CONNECTION POINT IS TO BE 1m FROM THE BASE OF POLE.
5. GALVANIZED PIPE 25mm I.D. TO BE INSERTED INTO THE POLE FOUNDATION DURING CONSTRUCTION WITH 200mm BELOW GROUND LEVEL AND 200mm ABOVE GROUND LEVEL. YELLOW/GREEN INSULATED CABLE IS TO PASS THROUGH THIS GALVANIZED PIPE. PLACE THE GALVANIZED PIPES SO THAT THEY ARE SHIELDED BY THE POLE, BUT ALSO ACCESS CABLE FOR TONG TESTING OF EARTH GRID FOR TYPE A, AUGER A MINIMUM DIAMETER HOLE TO A MINIMUM DEPTH OF 3 METERS, FEED 70sqmm BARE COPPER CABLE INTO THE HOLE AND BACKFILL. FOR BORED HOLES LESS THAN 75mm DIA, BACKFILL WITH A MIXTURE OF EARTHING COMPOUND AND WATER RATIOS BEING 20-30kg EARTH COMPOUND TO 10-15L WATER. FOR BORED HOLES GREATER THAN 75mm DIAMETER, BACKFILL WITH SELECTED SOIL MIXED WITH EARTHING COMPOUND AT 1:1 RATIO AND PLACED IN THE HOLE AND PROGRESSIVELY WATERED.
7. REFER TO S01-4-4-01 PN PROCEDURE 'POLE INSTALLATION PROCEDURE (CIVIL WORKS)' FOR THE INSTALLATION & REQUIREMENTS OF POLE CONCRETE FOUNDATIONS.



TAG	QTY.	DESCRIPTION	DRGREF	ITEM No.
11	1	GAL PIPE 25mm I.D.	S01-1-4-43	400832
10	1	M12x40 BOLT & NUT ASSEMBLY	S01-1-4-43	503669
9	AR	GAL PIPE 20mm I.D.	-	-
8	2	M12 NUT & SPRING WASHER	-	-
7	2	"C" CONNECTOR EARTHING COMPRESSION	S01-1-5-08	255786
6	2	LUG COMPRESSION - 70sqm	S02-1-2-11	5512
5	6M	MARKER TAPE	S02-1-8-05	6569
4	4m	Y/Gr INSULATED COPPER 70 sq.mm	S02-1-1-23	401059
3	6	CONNECTOR EARTHING COMPRESSION	S01-1-5-08	257394
2	24m	BARE COPPER CONDUCTOR -70sq.mm	S01-1-5-05	9803
1	2	EARTH ROD	S01-1-5-01	414060

MATERIAL SCHEDULE

NO	DESCRIPTION	DRN	DATE	CKD	APPD
8	ITEM NUMBER AMENDED	P.H.	APR'18	I.B.	B.C.
7	OPTION 1 & 2 REMOVED FROM TYPE 'A' EARTHING METHOD	I.B.	JUL'17	B.C.	B.C.
6	ITEM 10 & 11 ADDED, NOTE 7 ADDED, POLE FOUNDATION AMENDED	K.T.	JUN'16	I.B.	B.C.
5	ROUND POLE DETAILS ADDED	A.T.	JULY'11	B.N.	S.C.
4	ARRANGEMENT TYPE B ADDED	J.C.	SEP'10	A.T.	S.C.
3	OPTION 2 AND NOTES ADDED	C.M.	SEP'10	A.T.	S.C.



DES	S.C.M.	POWER STANDARD DRAWING	
DRN	J.A.L.	EARTHING POLE EARTHING METHOD	
CKD	-		
APPD	F.ROBSON	A3	DRAWING NUMBER S01-2-3-19
SCALE	NTS		
ISSUED	JUN'98	DRAWING NUMBER S01-2-3-19	
ALL DIM.	IN mm		
DRAFTING STANDARD TO A.S.1100		CAD PRODUCT - DO NOT AMEND MANUALLY	

