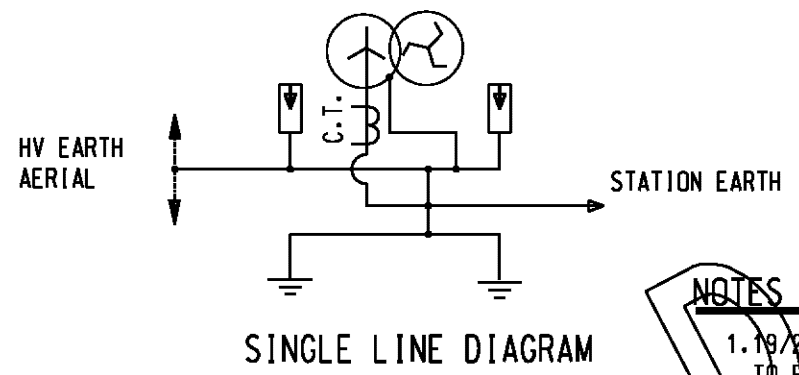


REFER TO DRAWING No's S01-02-03-11, S01-02-03-12
S01-02-03-13 FOR APPROPRIATE EARTHING ARR'G'T



- NOTES :**
- 19/2.14 EARTH FROM LV BOARD TO BE CONNECTED TO EARTH TEST LINK AND MARKED 'STATION EARTH'
 - SEE DRAWING NUMBER S01-02-06-07 FOR DETAILS OF HV C.T. SECONDARY WIRING AND STANDARDS BULLETIN S1-012 FOR DETAILS OF PROTECTIVE RELAY AND CONNECTIONS.
 - EARTH STRAP TO BE FIXED TO POLE WITH POWER FASTENERS AT 1000 mm MAX. CENTRES U.N.O.
 - BOLTED JOINTS IN EARTH STRAP TO BE CLEAN AND FREE OF PAINT, RUST AND GREASE AND TINNED.
 - EARTH TEST LINKS TO BE BUTT WELDED TO PROVIDE CONTINUITY.

TAG No	QTY.	DESCRIPTION	STOCK CODE	DRG REF
10	2	LINK, EARTH TEST	9142	S01-01-05-02
9	15	CLIP - HILTI GAL.	-	
8	1	EARTHING BUSBAR - METAL OXIDE DIVERTER	251413	S01-01-05-02
7	1	HV NEUTRAL C.T.	-	
6	1	CLAMP, PARALLEL GROOVE BI-METAL	115774	S01-01-04-25
5	4m	COPPER CABLE - SINGLE CORE - 35 sq.mm	9092	S02-01-01-05
4	2	LUGS - 35 sq.mm	5785	-
3	1	LUG COPPER COMPRESSION - 70 sq.mm	5512	-
2	3m	CONDUCTOR - COPPER 19/2.14 - 70 sq.mm	9803	S01-01-05-05
1	11m	STRAP, EARTHING, BARE COPPER 25 X 3 mm	9837	S01-01-05-05

MATERIAL SCHEDULE

NO	DESCRIPTION	DRN	DATE	CKD	APPD
9	SUPERSEDED	A.T.	DEC'12	B.C.	B.C.
8	NOTE 4 ADDED, MATERIALS LIST AMENDED, ITEM NUMBERS ALTERED	J.A.L.	MAY'95	S.C.M.P.	J.D.
7	TAG 1 STOCK CODE CHANGED	G.R.	FEB'94	pmc	C.H.Y.
6	EARTHING ARRANGEMENT MODIFIED TO SUIT TRI-FUSE AND METAL OXIDE SURGE DIVERTER	gmck	OCT'92	N.S.	B.T.K.
5	TAG No.3 STOCK CODE REVISED	gmck	FEB'92	N.S.	-



DES	T.M-L.	POWER STANDARD DRAWING	
DRN	pmc	EARTHING SUBSTATION - STEP UP DOUBLE POLE	
CKD	N.S.		
APPD	B.KENT		
SCALE	1 : 40		
ISSUED	FEB'91		
ALL DIM. IN mm		A3	DRAWING NUMBER S01-02-03-05
DRAFTING STANDARD TO A.S.1100		CAD PRODUCT - DO NOT AMEND MANUALLY	

