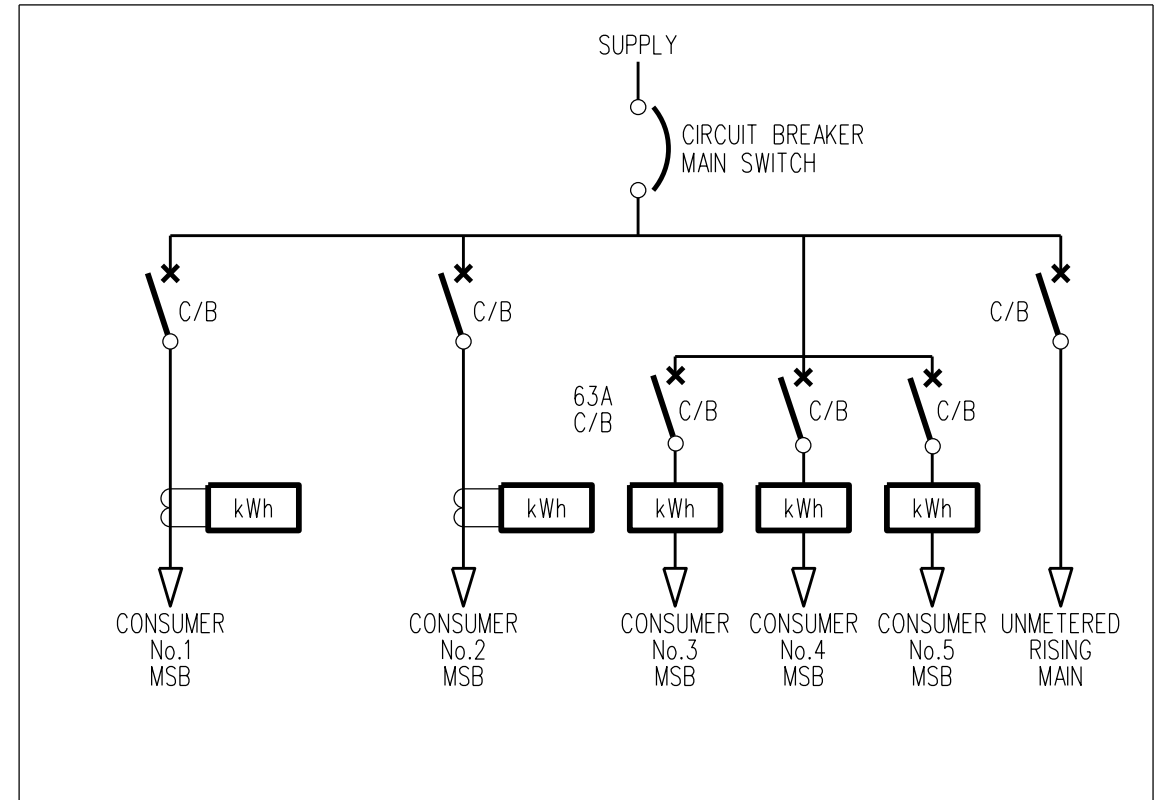


SCENARIO 1



SCENARIO 2

- NOTES :**
1. CONSUMER CIRCUIT BREAKER SHOULD BE PADLOCKABLE IN THE 'OFF' POSITION, EXCEPT FOR LIFT & FIRE PROTECTION FEEDER WHICH SHOULD BE PADLOCKABLE IN THE 'ON' POSITION.
 2. THE EXAMPLES SHOWN ARE ILLUSTRATIVE ONLY. OTHER ARRANGEMENTS MAY BE APPROVED.

						DES -		POWER STANDARD DRAWING	
						DRN A.SCHMID			
						CKD -		MULTIMETERING INSTALLATIONS	
						APPD -			
						SCALE NTS			
						ISSUED -			
						ALL DIM. IN mm			
						DRAFTING STANDARD TO A.S.1100		CAD PRODUCT - DO NOT AMEND MANUALLY	
								A3 DRAWING NUMBER S11-02-07-37	
								AMDT	
5	RELOCATE MAIN SWITCH CIRCUIT BREAKER	CWM	OCT'20	BV	LH				
NO	DESCRIPTION	DRN	DATE	CKD	APPD				
AMENDMENTS									

