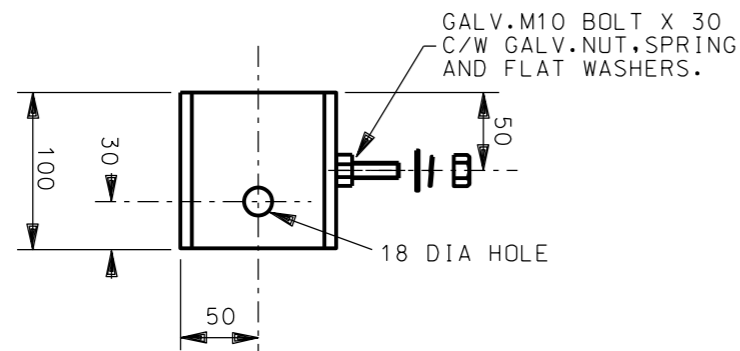
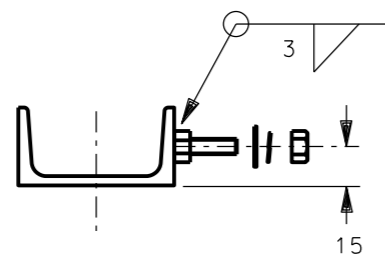
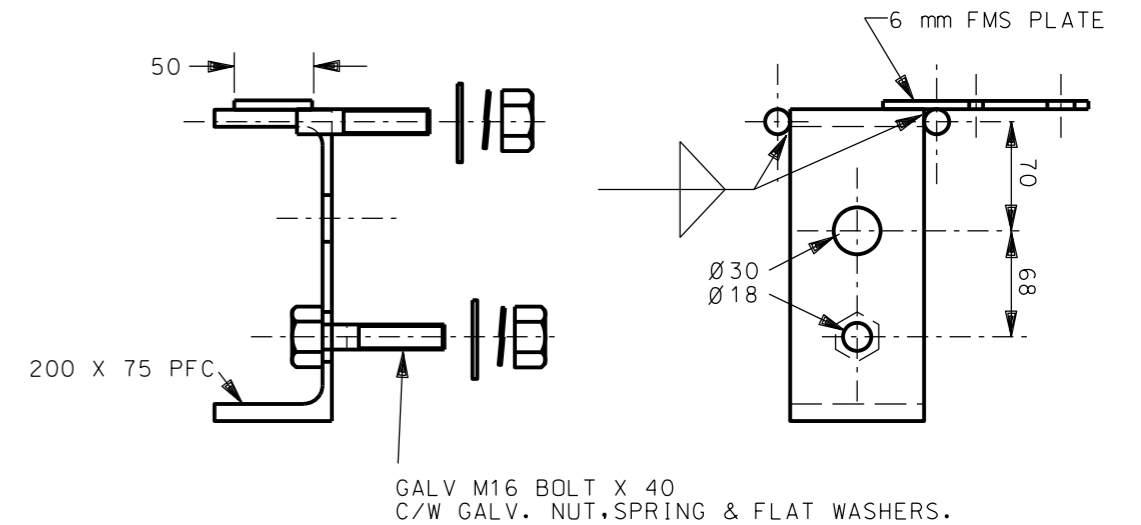
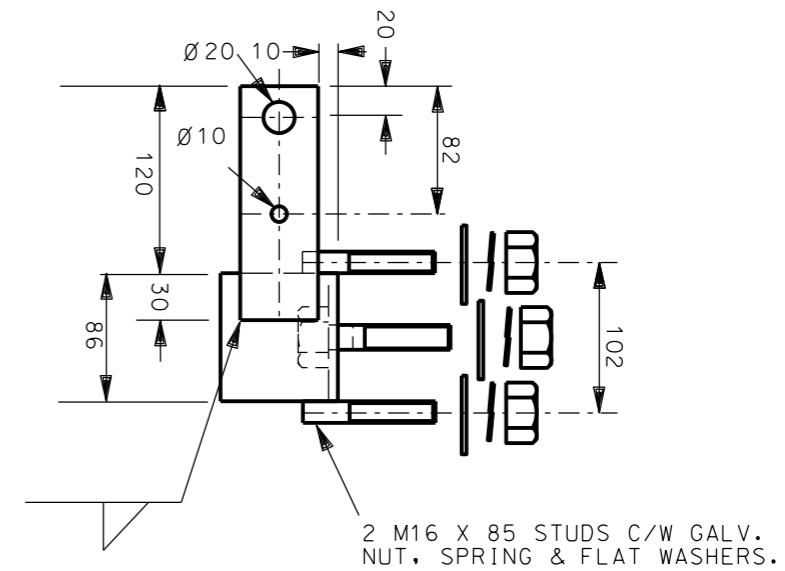


ITEM 1 - BRACKET-DOUBLE CLAMP MOUNTING
(ITEM NUMBER 203653)



ITEM 3 - BRACKET HOOK MOUNTING
(ITEM NUMBER 203679)



ITEM 2 - BRACKET OUTREACH MOUNTING
(ITEM NUMBER 203661)

NOTES

1. ALL WORKMANSHIP AND MATERIALS TO BE IN ACCORDANCE WITH AS 3678 & 3679.
2. ALL WELDING AND WELD PREPARATION TO BE IN ACCORDANCE WITH AS 1554. UNLESS INDICATED OTHERWISE, FILLET WELDS TO BE 6 mm U.N.O.
3. ALL ROUGH OR BURRED EDGES ARE TO BE DRESSED CLEAN.
4. BOLTS TO BE ISO METRIC AND PROPERTY CLASS 4.6 IN ACCORDANCE WITH AS 1111).
5. NUTS AND WASHERS TO BE IN ACCORDANCE WITH AS 1112 & AS 1237 RESPECTIVELY.
6. AFTER COMPLETION OF WELDING, ALL ITEMS ARE TO BE HOT DIP GALVANISED TO AS 1650.

NO	DESCRIPTION	DRN	DATE	CKD	APPD
2	UPDATE TITLEBLOCK AND DRAWING NUMBERS	C.C.	AUG'19	M.S.	C.C.
1	ITEM 2 MODIFIED TO ALLOW ATTACHMENT OF FUSE ASSEMBLY, NOTES MODIFIED.	J.A.L.	APR'95	S.C.M.	P.J.D.
AMENDMENTS					



DES	O.S.	POWER STANDARD DRAWING		
DRN	G.MCK	LINE HARDWARE LV - ABC BRACKET DOUBLE CLAMP OUTREACH & HOOK MOUNTING		
CKD	G.SCHUBER			
APPD	B.T.KENT			
SCALE	1:5			
ISSUED	SEPT'89	A3	DRAWING NUMBER	S04-01-02-02
ALL DIM.	IN mm			
DRAFTING STANDARD TO A.S.1100			CAD PRODUCT - DO NOT AMEND MANUALLY	

