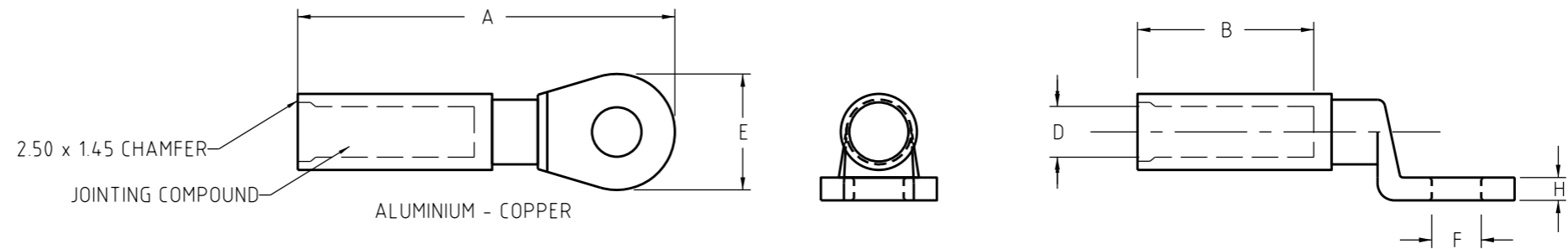


ISOMETRIC VIEW
SCALE N.T.S.



ITEM REF.	NOMINAL CONDUCTOR CSA (sqmm)	NOMINAL DIMENSIONS (mm)						HEX DIE A/F	NO. OF CRIMPS	ITEM NUMBER
		A	B	D	F	E	H			
1	95	114	45.5	12.5	13	30.5	6	21.5	5	407378
2	150	114	45.5	15.5	13	30.5	6	21.5	5	415589

NOTES:

1. CABLE INSULATION TO BE REMOVED TO DIMENSION SHOWN ON LUG AND FULLY INSERTED INTO LUG BEFORE CRIMPING
2. LUG TO HAVE STRIPPING LENGTH, DIE SIZE, CRIMP NUMBER AND CRIMP SEQUENCE MOLDED ONTO LUG INSULATION
3. ALL LUGS TO COMPLY WITH AS/NZS 4325.1
4. 95SQMM LUG IS A GREY COLOR
150SQMM LUG IS A VIOLET COLOR

NO	DESCRIPTION	DRN	DATE	CKD	APPD
3	REFORMATTED TABLE. REMOVED ITEM 3. & DIM C. ADDED JOINTING COMPOUND.	A.N.	AUG'21	A.N.	B.V.
2	95sqmm WITH 16M HOLE ADDED	C.C.	MAY'19	B.V.	B.C.
1	150SQMM VERSION ADDED	A.T.	MAR'12	B.C.	S.C.
0	ISSUED FOR CONSTRUCTION	J.C.	JUL'08	A.T.	S.C.
AMENDMENTS					



DES	A.TAYLOR	POWER STANDARD DRAWING		
DRN	J.COPPINS	LV ABC INSULATED CRIMP LUG		
CKD	A.TAYLOR			
APPD	S.C.			
SCALE	N.T.S.			
ISSUED	JULY 2008	A3	DRAWING NUMBER	S04-01-02-18
ALL DIM. IN	mm			
DRAFTING STANDARD TO A.S.1100		CAD PRODUCT - DO NOT AMEND MANUALLY		 AMDT