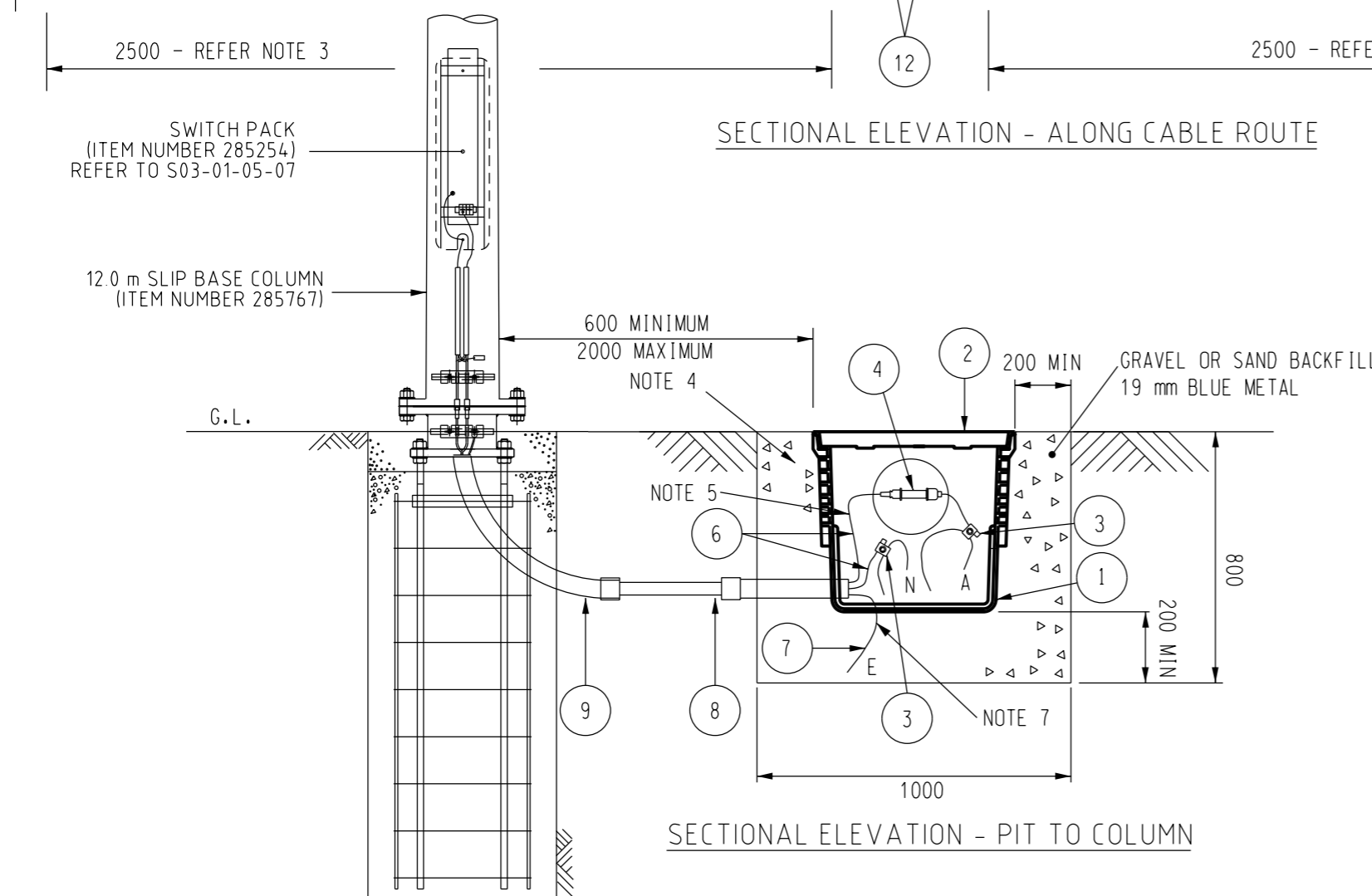


SECTIONAL ELEVATION - ALONG CABLE ROUTE



SECTIONAL ELEVATION - PIT TO COLUMN

NOTES:

1. REMOVE SACRIFICIAL SHEATH AND NYLON JACKET FOR A DISTANCE OF 30mm TO ALLOW INSTALLATION OF PIERCING CONNECTOR ON MAINS CONDUCTOR.
2. CUT HOLES IN PIT AS REQUIRED TO SUIT CABLE AND CONDUIT ENTRIES.
3. CONDUITS ARE TO BE CURVED FROM THE NORMAL CABLE DEPTH (900mm) TO THE BOTTOM OF THE PIT OVER A DISTANCE OF 2500mm.
4. AREA AROUND THE LID MUST BE RIGIDLY SUPPORTED BY A MIN 150mm WIDE x 150mm DEEP CONCRETE SURROUND. THE TOP OF THE CONCRETE SURROUND SHALL BE AT FINAL GROUND LEVEL.
5. MINIMUM LENGTH OF 0.5m OF EXCESS CABLE SHALL BE STORED INSIDE THE PIT ON BOTH SIDES OF THE SUBMERSIBLE FUSE (ITEM 4).
6. ALL CRIMP CONNECTIONS SHALL BE DONE AS PER S02-02-02-10.
7. 35sqmm CU EARTH CAN BE JOINTED WITH THE PIT USING 'C' CRIMP 35/35 CONNECTOR

REFERENCE DRAWINGS:

- S03-01-01-11 - COLUMN, STREET LIGHTING, SLIP BASE, TAPERED STEEL, 12.0 m OUTREACH TYPE
- S03-01-01-12 - SLIP BASE 12.0 m COLUMN OUTREACH TYPE
- S03-01-02-04 - RAG BOLT REINFORCEMENT FOUNDATION ARRANGEMENT
- S03-01-02-05 - INSTALLATION DETAILS - MECHANICAL AND ELECTRICAL
- S03-01-05-06 - SWITCH PACK LIGHTING COLUMN INTEGRAL
- S03-01-05-07 - SWITCH PACK WIRING DIAGRAM
- S03-01-05-14 - ELECTRICAL CONNECTION DETAILS, SLIP BASE 12.0 m COLUMN

ITEM REF.	QTY.	DESCRIPTION	ITEM NUMBER	DRAWING REF.
12	2	35sqmm COMPRESSION CONNECTOR PROFILE 'C'	406821	S01-01-05-08
11	AR	CONDUIT - 80mm CAT 'A' PVC	3939	S02-01-09-02
10	AR	CABLE 25sqmm Cu/XLPE/NYL/MDPE BLACK	9456	S02-01-01-20
9	1	CONDUIT BEND 90 DEG. - 50mm CAT 'A' PVC	3871	S02-01-09-02
8	AR	CONDUIT - 50mm CAT 'A' PVC	3913	S02-01-09-02
7	AR	BARE CONDUCTOR - EARTHING 35sqmm	9829	S01-01-05-05
6	AR	CABLE 6sqmm Cu SDI	-	-
4	1	FUSE - SUBMERSIBLE 16A	415807	S03-01-06-07
3	2	SUBMERSIBLE IPC 6-50sqmm 3 PORTS	400918	-
2	1	PIT COVER CONCRETE CLASS A 'ELECTRICAL'	247767	S03-01-06-01
1	1	PIT - CABLE JOINTING	247759	S03-01-06-01

MATERIAL SCHEDULE

NO	DESCRIPTION	DRN	DATE	CKD	APPD
12	UPDATED NOTES AND TABLE. UPDATED ITEM DESCRIPTIONS OF ALL ITEMS.	A.N.	AUG'21	A.N.	B.V.
11	TITLEBLOCK & DRAWING NUMBERS FORMATTED	K.T.	FEB'19	C.C.	C.C.
10	NOTE 7 ADDED	C.C.	AUG'17	I.B.	B.C.
9	FUSE RATING AMMENDED	CWM	DEC'14	B.C.	S.C.
8	NOTE 6 ADDED. SUBMERSIBLE FUSE UPDATED	A.T.	MAY'12	B.C.	S.C.
7	MIN CABLE LENGTH ADDED	J.C.	06'10	A.T.	S.C.
6	POLE TO PIT MAXIMUM ADDED	C.M.	03'10	A.T.	S.C.
5	ITEM 12 CHANGED TO 35/35 CONNECTOR	A.B.	JUL'09	A.T.	S.C.
4	S/C ITEM 3 CHANGED	J.C.	MAR'09	A.T.	S.C.
3	CONCRETE LID SURROUND	J.C.	SEP'07	B.C.	B.C.



DES	M. BOCK	POWER STANDARD DRAWING	
DRN	J. LIVESLY	COLUMN, TAPERED STEEL, 12.0m.	
CKD	M. BOCK	OUTREACH TYPE	
APPD	F. ROBSON	SLIP-BASE MOUNTED SERVICE PIT/POLE BASE	
SCALE	NTS	INSTALLATION AND CONNECTION DETAILS	
ISSUED	FEB'97	A3	DRAWING NUMBER S03-01-06-03
ALL DIM.	IN mm		
DRAFTING STANDARD TO A.S.1100		CAD PRODUCT - DO NOT AMEND MANUALLY	

