

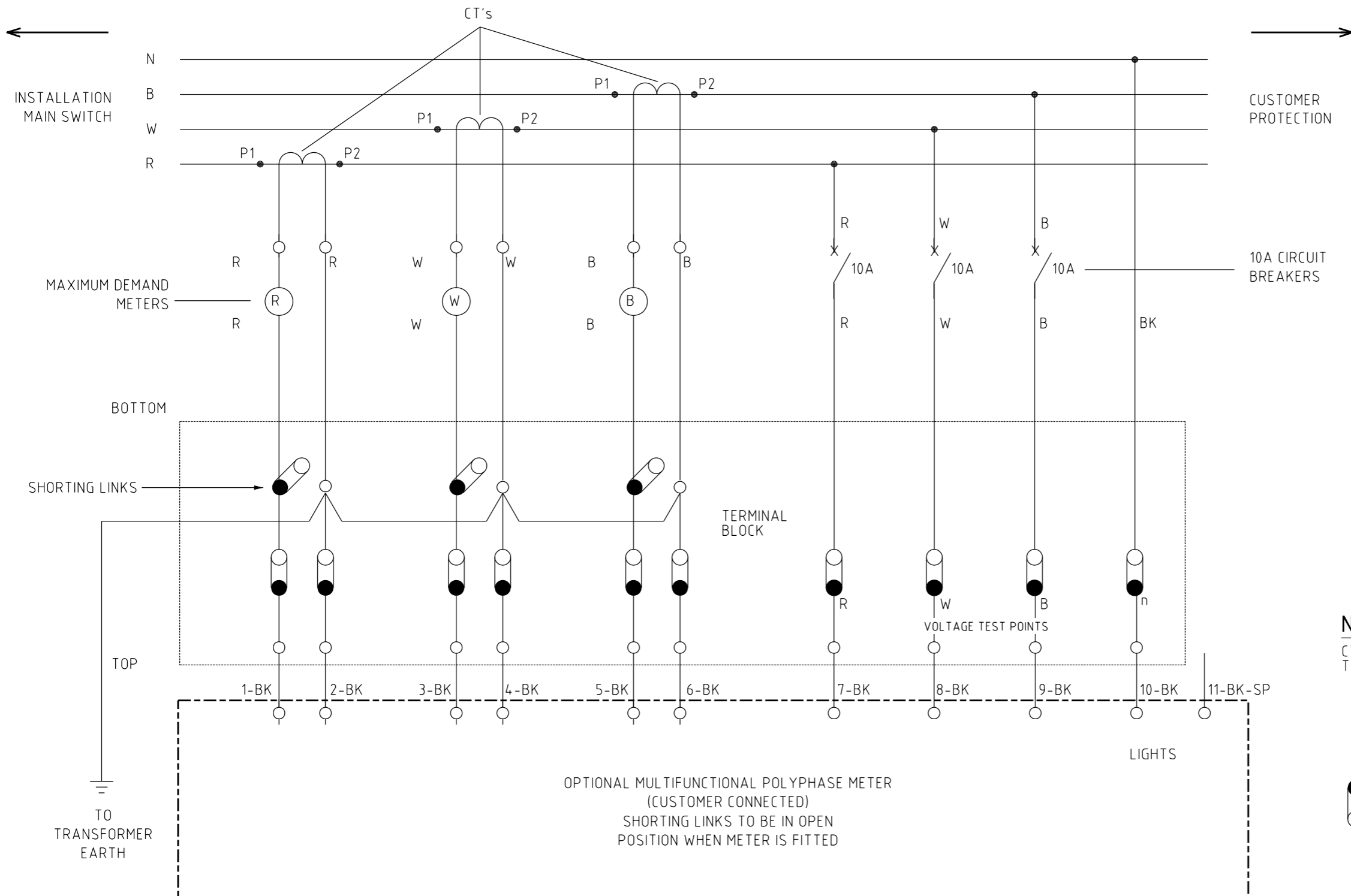
NOTES:

1. LV CABLES TO BE SIZED AND LAID OUT ON CABLE LADDER AS PER S02-02-07-49.
2. CABLES TO BE SUPPORTED TO STOP MOVEMENT DURING NORMAL OPERATION AND FAULTS. LOCATE SUPPORTS TO SUIT RECOMMENDED CABLE RADIUS.
3. NOT ALL ITEMS SHOWN IN S.L.D. ARE TO BE INSTALLED. ITEMS TO BE INSTALLED ARE TO BE ADVISED BY PROJECT ENGINEER TO SUIT INDIVIDUAL INSTALLATIONS.
4. TYPE AND RATING OF EQUIPMENT TO BE ADVISED BY PROJECT ENGINEER. SHEET 2 FOR METERING CIRCUIT DIAGRAM.
5. INDOOR SUBSTATIONS THAT SUPPLY MULTIPLE CUSTOMERS SHALL HAVE A TARIFF METER INSTALLED REFER TO
6. OPTIONAL CABLE LADDERS CAN BE USED TO INSTALL LV CABLES TO CEILING AND/OR WALLS OF THE SUBSTATION CHAMBER. IN THIS OPTION SURROUNDING INFRASTRUCTURE NEEDS TO BE CONSIDERED FOR POSSIBLE ELECTROMAGNETIC INTERFERENCE (EMI) CONCERNS. AREAS SUCH AS COMMUNICATION, COMPUTER EQUIPMENT OR PERMANENT RESIDENTIAL AREAS SHOULD BE AVOIDED.
7. REFER TO S02-02-07-62 FOR CABLE LADDER LAYOUT, ACCESSORIES AND SPECIFICATIONS.
8. ALL CABLES SHALL BE SECURED TO THE CABLE LADDERS AND UNISTRUT CHANNELS USING A PWC APPROVED CABLE CLAMP AND SPACING.
9. MCCB'S SWITCH TO BE 1500mm HIGH FROM FLOOR LEVEL.

8	AMENDED NOTE 9	P.B.	APR'22	B.V.	B.C.
7	MCCB CONFIGURATION CORRECTED	C.W.M.	FEB'20	B.C.	B.V.
6	RECONFIGURE STREET NETWORK MCCB & ADD MCCB HEIGHT	C.W.M.	FEB'19	B.C.	B.V.
5	MCCB ARRANGEMENT AMENDED	P.H.	OCT'17	I.B.	B.C.
4	NOTES REVISED, MAIN SWITCH REMOVED	A.T.	JUN'14	B.C.	B.C.
3	NOTE 7 AND TARIFF METER ADDED.	C.M.	JUL'10	A.T.	S.C.
2	NOTE 7 AND TARIFF METER ADDED.	A.B.	NOV'09	A.T.	S.C.
1	CEMENT COLLAR DIMENSION CHANGED TO 125mm	K.I.	MAR'05	C.C.	C.C.
NO	DESCRIPTION	DRN	DATE	CKD	APPD
AMENDMENTS					



DES	S.LEACH	POWER STANDARD DRAWING		
DRN	A.D.	INDOOR SUBSTATION LV CONNECTION DETAILS (SHEET 1 OF 2)		
CKD	S.LEACH	A3	DRAWING NUMBER	S02-02-07-48_1
APPD	F.ROBSON			
SCALE	AS SHOWN			
ISSUED	MARCH 1998			
ALL DIM. IN mm				
DRAFTING STANDARD TO A.S.1100		CAD PRODUCT - DO NOT AMEND MANUALLY		AMDT



NOTES:
 CT1-CT3
 TRANSFORMERS CURRENT METERING

R - RED BK - BLACK
 W - WHITE BN - BROWN
 B - BLUE GY - GREY

TOP
 BOTTOM
 TEST BOX SLIDE LINKS

CIRCUIT DIAGRAM

NOTE
 ALL FUSES CONNECTED FROM LV SWITCHBOARD AND WIRED USING 7/1.04mm 0.6/1kV
 ALL OTHER WIRING 7/0.67mm 0.6/1kV
 NEUTRAL & EARTH CONNECTIONS MADE TO NEUTRAL BAR

NO	DESCRIPTION	DRN	DATE	CKD	APPD
3	SHEET 1 AMENDED	P.B.	APR'22	B.V.	B.C.
2	SHEET 1 AMENDED	CWM	FEB'20	B.C.	B.V.
1	SHEET 1 AMENDED	C.C.	FEB'19	B.C.	B.V.
0	ISSUED FOR CONSTRUCTION	C.M.	JUN'14	A.T.	B.C.
AMENDMENTS					



DES		POWER STANDARD DRAWING	
DES	A.TAYLOR	SUBSTATIONS	
DRN	C.M.	INDOOR	
CKD	A.TAYLOR	GENERAL ARRANGEMENT	
APPD	B.C.	SHEET 2 OF 2	
SCALE	N.T.S.	A3	DRAWING NUMBER
ISSUED	JULY 2010		
ALL DIM.	IN mm	CAD PRODUCT - DO NOT AMEND MANUALLY	
DRAFTING STANDARD TO A.S.1100		AMDT	