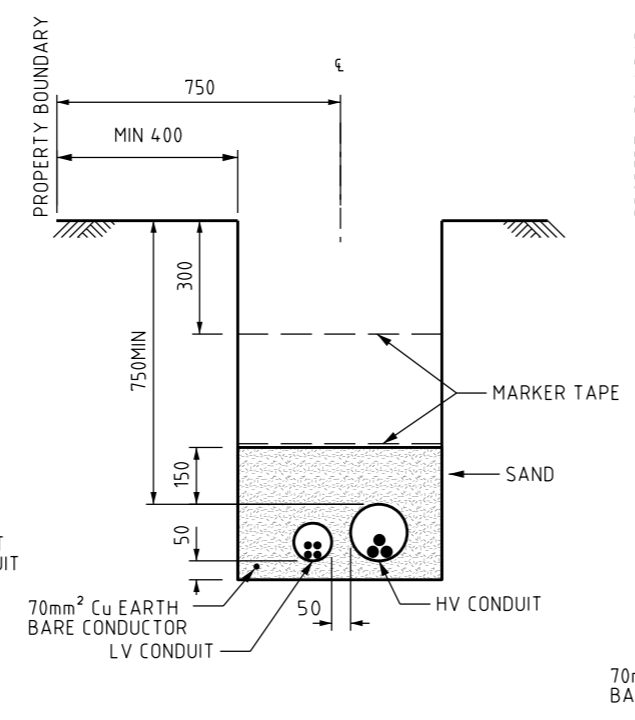


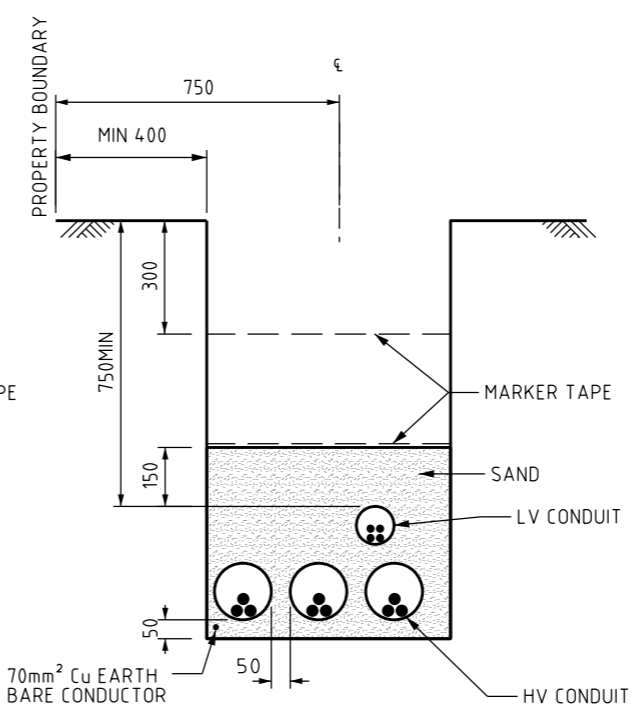
TYPICAL SUBDIVISION

SCALE 1:20



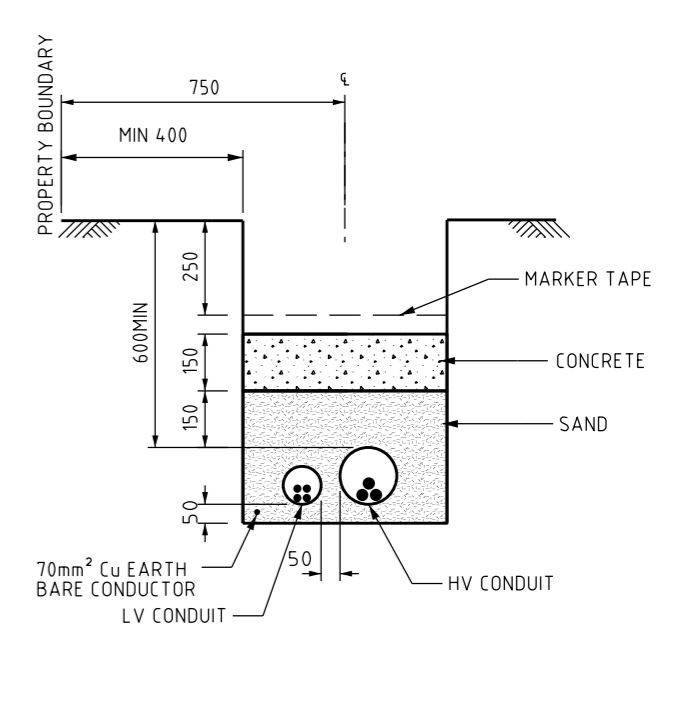
DUCTED (POWER ONLY)

SCALE 1:20



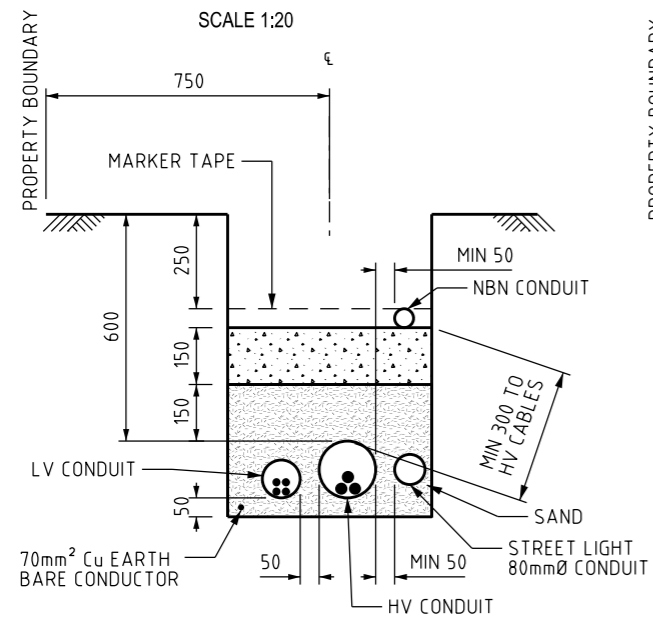
MULTI LAYERED DUCTS (POWER ONLY)

SCALE 1:20



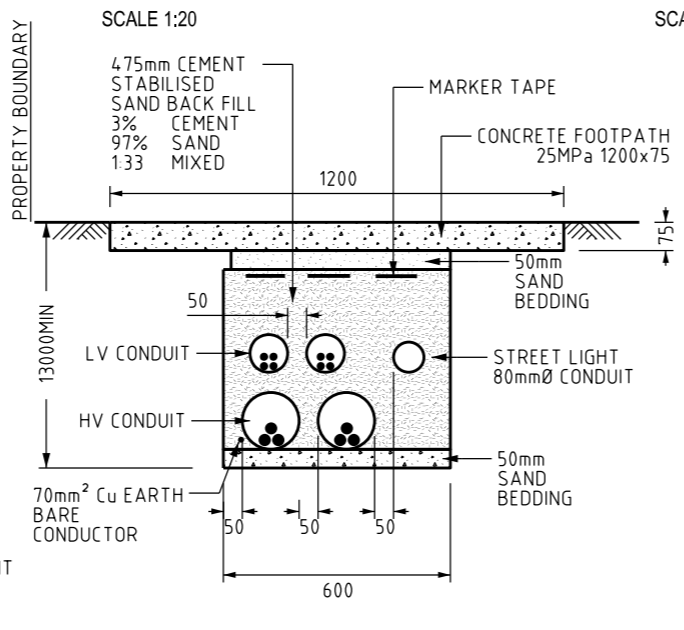
ROCK (POWER ONLY)

SCALE 1:20



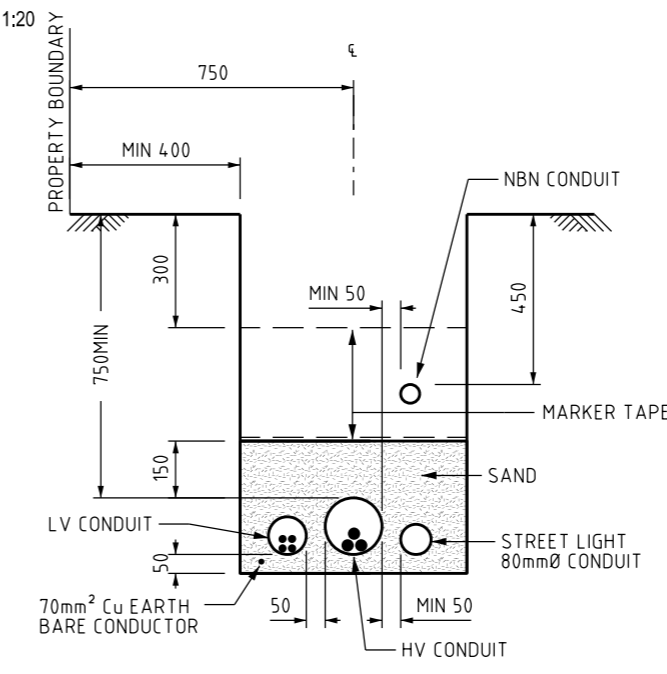
STREETLIGHT & NBN SHARED IN ROCK

SCALE 1:20



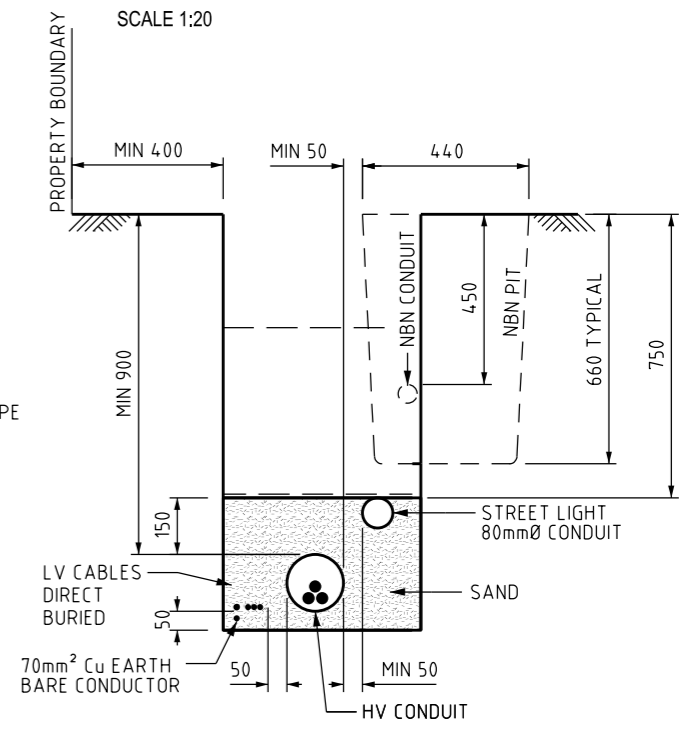
**TRENCH SECTION IN FOOTPATH
(POWER UNDER GROUNDING PROJECT -
PWC ONLY)**

SCALE 1:20



STREETLIGHT & NBN SHARED - DUCTED

SCALE 1:20



**STREETLIGHT & NBN PIT SHARED
(SUBDIVISION)**

SCALE 1:20

NOTES:

- REFER TO DRAWING S02-02-06-01 FOR ALL TRENCHING NOTES
- CABLES BENEATH NBN EQUIPMENT MUST BE IN CONDUIT
- 300mm HORIZONTAL SEPARATION BETWEEN ALL DIRECT BURIED CABLES AND NBN
- REPLACE MARKER TAPE WITH POLYMERIC CABLE COVERS WHEN:
 - WITHIN 15 METERS OF A RMU OR SUBSTATION
 - 7.5 METERS EITHER SIDE OF A CABLE JOINT
 - OUTSIDE OF FOOTPATH ALLOCATION REFER TO S02-02-06-03
- ALL TRENCH MAX DEPTH AT 1200 UNLESS PRIOR APPROVAL

NO	DESCRIPTION	DRN	DATE	CKD	APPD
13	AMEN STREETLIGHT CONDUIT POSITION. UPDATE TELSTA REFERENCE TO NBN.	C.C.	NOV'21	B.V.	A.N.
12	MIN DEPTH ADDED, ADDED TRENCH SECTION IN FOOTPATH & ADDED NOTE 5.	C.C.	JUN'19	B.V.	B.C.
11	UPDATED ROCK TRENCH DEPTH	C.C.	DEC'18	B.V.	B.C.
10	UPDATE TO STANDARD CABLE IN CONDUIT REPRESENTATION & TITLE CHANGE	P.H.	APR'18	I.B.	B.C.
9	NOTE 4 ADDED, EARTH CONDUCTOR RELOCATED, SAND DEPTH INCREASED	A.T.	APR'11	B.C.	S.C.
8	CONDUIT SPACING ADDED	C.M.	AUG'10	A.T.	S.C.
7	EARTH STRAP CHANGED TO 70mm ² Cu CONDUCTOR	J.C.	DEC'08	A.T.	S.C.
6	REDRAWN, TELSTA PIT AMENDED & NOTE ADDED	A.S.	JAN'06	-	-
AMENDMENTS					



POWER STANDARD DRAWING	
DES	C.CAMILLERI
DRN	A.SCHMID
CKD	C.CAMILLERI
APPD	-
SCALE	1:20
ISSUED	JANUARY 2006
ALL DIM. IN mm	A3
DRAWING NUMBER	S02-02-06-02
DRAFTING STANDARD TO A.S.1100	CAD PRODUCT - DO NOT AMEND MANUALLY

